

# INSTALLATION GUIDE



## SAFETY

### THE SAFETY OF YOU AND OTHERS IS VERY IMPORTANT TO US!

To minimize this risk and make an informed decision about safety, it is important that you carefully read and follow the installation instructions we have provided.

We urge you to use your own good judgment and allow plenty of time for installation.

## HAZARD CHECKLIST

- Always wear personal protective equipment (PPE) such as: protective eye wear, gloves, close toed shoes, etc.
- We recommend that you use a certified mechanic or shop for professional installation.
- Always set emergency brakes on vehicle and use tire blocks to ensure vehicle stabilization.
- Use caution when lifting, we recommend the use of equipment to help lift bumpers into place.
- Use caution when using power tools such as air ratchet, etc.
- Take caution when installing wiring.
- Perform regular inspections of hardware, bolts, brackets, etc.
- Rigid light brackets are specifically designed to fit Rigid lights, we do not guarantee off brand fitment.
- Our winch mount is designed for Warn and Superwinch products. We do not guarantee off-brand fitment.

## USE & RISK

Bodyguard Products LLC is not responsible for damage to our products, or other subsequent damage that might occur as a result of misuse or improper installation. While we do manufacture products that appear stronger than factory parts, our products should not be viewed or relied upon as life-saving devices in the event of a collision or rollover. We make no claims relating to airbag compatibility, crashworthiness, or sturdiness. It is the customer's responsibility to check with the vehicle manufacturer or auto dealer regarding airbag compatibility and automobile manufacturer's warranty before installing our products.

# PREPARATION

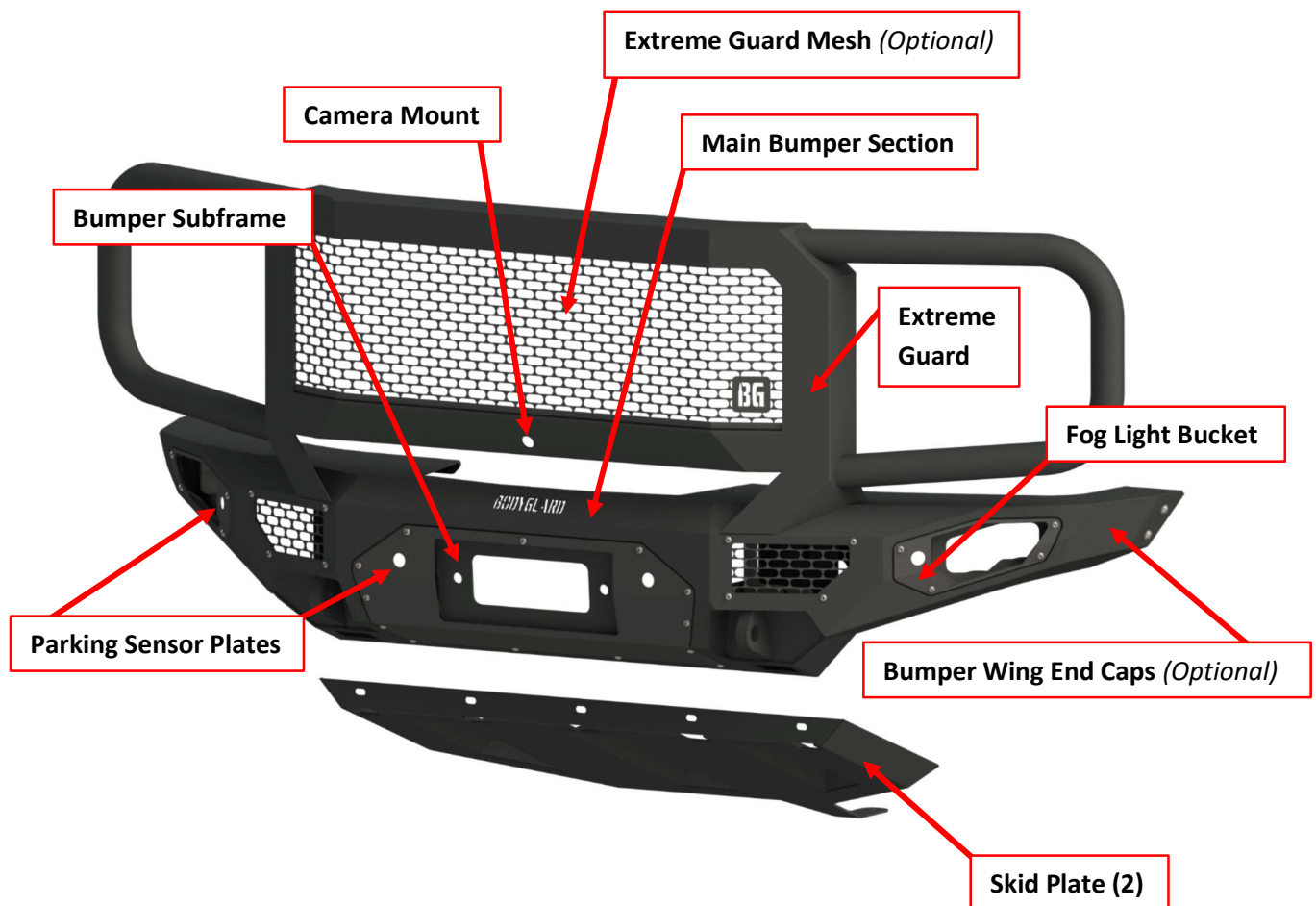
- Ensure personal safety by checking for hazards and identifying risks.
- Check for correct hardware.
- Check for tools needed.
- Use either foam or tape on fenders to prevent scratches to the truck when installing your bumper.
- Please allow approximately 3-4 hours for installation.

## TOOLS

- 1** - Jack
- 2** - Safety Stands
- 2** - Wheel Chocks
- 1** - Wire Cutters & Wire Crimpers
- 1** - Small Pry Tool
- 1** - Tape measure
- 1** - Pliers
- 1** - Metric Wrench/Sockets – 8mm, 10mm, 13mm, 14mm, 15mm, 18mm, 19mm, allen wrenches or sockets
- 1** - Level

## BUMPER COMPONENTS

- 1** - Main Bumper Section
- 1** - Bumper Subframe
- 2** - Fog Light Buckets
- 2** - Parking Sensor Plates
- 2** - Bumper Wing End Caps
- 1** - Primary Skid Plate
- 1** - Secondary Skid Plate
- 1** - Adaptive Cruise Control Relocation Bracket (ACC)
- 1** - Camera Relocation Mount



# HARDWARE

## Qty Parts

### Bumper/Sport Bar Hardware Kit

- 60**- 1/4" -20 x 3/4" Long, Stainless Steel SBHCS
- 24**- 1/4" -20 Stainless Steel SBHCS Grade 8 Serrated Hex Flange Nut
- 39**- 1/4-20 (.093-.126: Panel Range) Zinc Electroplate Spring Steel Cage Nut

### Endcap Hardware Kit

- 14**- 5/16"-18 x 3/4" Long, Stainless Steel SBHCS
- 8**- 5/16"-18, Flange nut
- 14**- 5/16", Washer
- 14**- 5/16"-18 Clip Nut

### Bumper Hardware Kit

- 4**- 1/2-13 x 1-1/2 Long, Grade 8 HB Zinc-Yellow
- 4**- 1/2" Washer, Grade 8 Zinc-Yellow
- 4**- 1/2"-13 Grade 8 Steel Serrated Flange Nut Zinc
- 4**- 21mm, Snap in, parking sensor plug, Black

### Subframe Hardware Kit

- 6**- M12, WASHER
- 6**- M12-1.75 X 40MM, HB

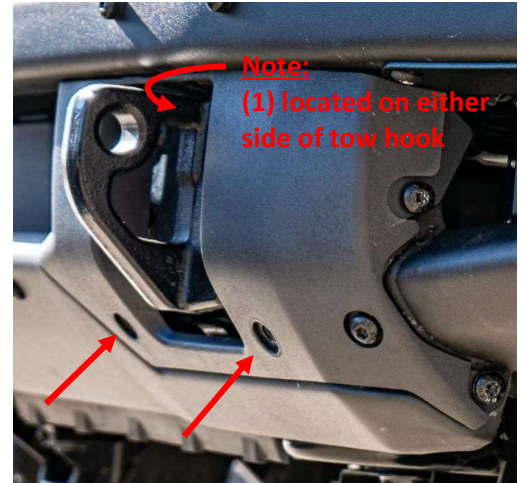
### ACC bracket (Extreme Guard only)

## Qty Parts

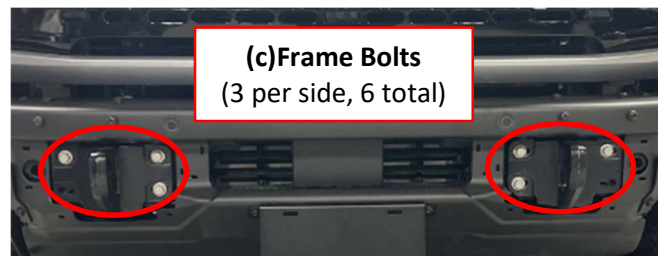
- 14**- 1/4" -20 x 3/4" Long, Stainless Steel SBHCS (Black Oxide)
- 12**- 1/4" -20 Stainless Steel SBHCS Grade 8 Serrated Hex Flange Nut
- 4**- 1/4-20 (.093-.126: Panel Range) Zinc Electroplate Spring Steel Cage Nut

# BUMPER REMOVAL (HEAVY DUTY MODULAR)

1. Start by prying the (4) plastic clips holding the frame bolt covers with the pry tool. (Quantities may vary depending on trim level)



2. Once the plastic covers are removed, (a) locate the front sensor harness plug behind the driver side headlight and fender liner, (b) and unplug the harness. Now remove the 6 frame bolts using an 15mm socket, and the front bumper will come off.



:::Once the bumper has been removed detach the parking sensor wire harness from the bumper:::



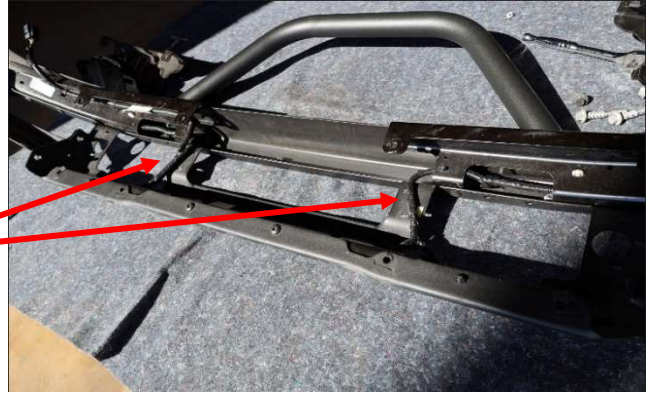
**(d)** Detach the wire harness from the bumper. Unclip the parking sensors from their mounts with the sensors attached.

(8) 13mm bolts.

(2) 8mm bolts.

(19) Torx bolts.

Remove bumper structure plates and unclip the harness.



1. Once the bumper is off, locate the (6) bolts holding the skid plate, and remove the skid plate using the 15mm socket.

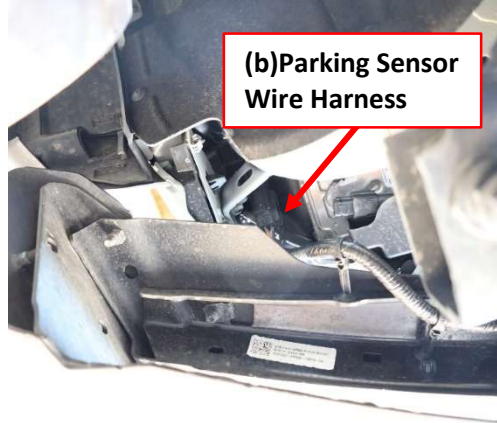


## BUMPER REMOVAL (STANDARD)

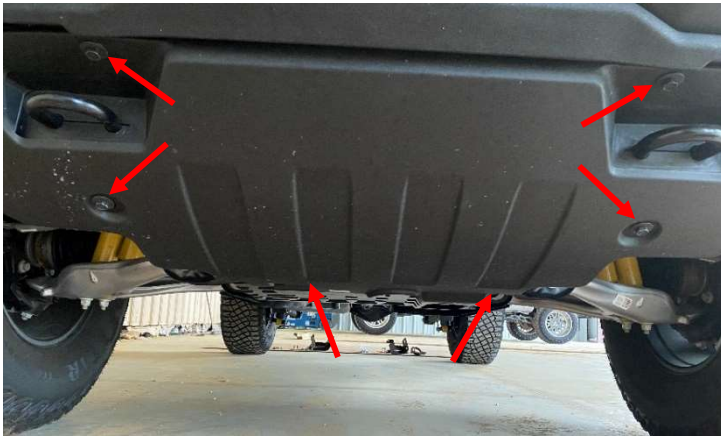
1. Start by removing the fog light covers using the small pry tool and pry out. Then disconnect both parking sensors. **(This should be done on the left and right side.)**



2. Once the plastic covers are removed, (a) locate the front sensor harness plug behind the driver side headlight and fender liner, (b) and unplug the harness. Now remove the 6 frame bolts using an 15mm socket, and the front bumper will come off.



3. Once the bumper is off, detach the parking sensor wiring harness from the bumper, and locate the (6) bolts holding the skid plate, then remove the skid plate using the 15mm socket. With the skid plates off, remove both tow hook shrouds by sliding forward.

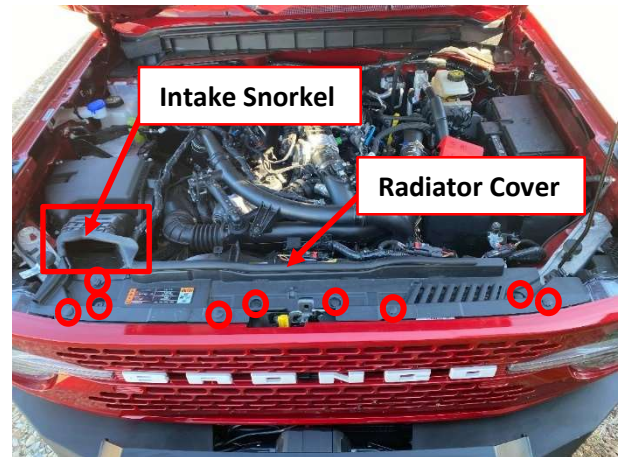




# GRILL REMOVAL (For Camera Relocation)

*(Skip this step if you do not have factory front camera)*

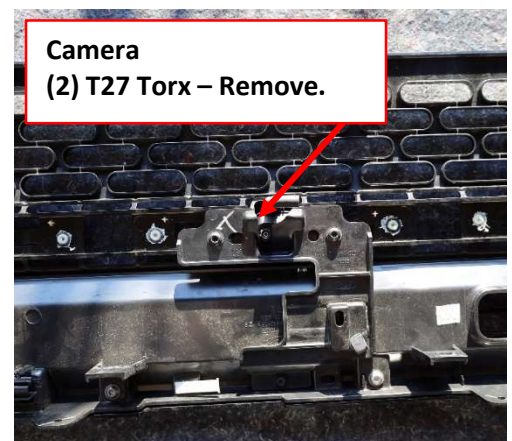
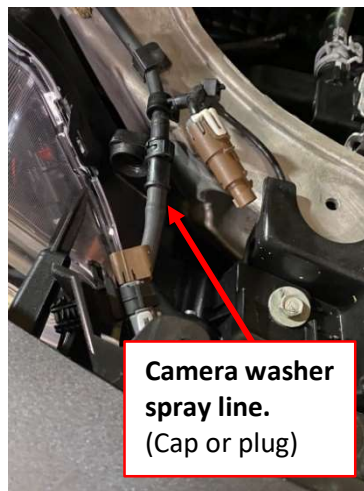
1. Locate and remove the (9) clips holding the radiator cover to reveal the bolts holding the grill. Then remove the intake snorkel shown in the highlighted box to the right. Lift upwards to unclip and pull forwards. Once the intake snorkel is removed, remove the plastic radiator cover.



2. Once the radiator cover has been removed, remove the (4) bolts using a 10mm socket holding the top of the grill. Pry gently at the top corners of the grill and work your way around the bottom and pull outwards. Until the grill is free to be removed.



3. Now that the grill is free, disconnect your camera and camera washer spray line, above your passenger headlight. Once those items are disconnected, remove grill and set aside. Uninstall your camera from the grill and remove the factory camera harness and the sprayer tube. **(Washer spray tubing will need to be capped or plugged: plug with a 1/4" bolt and zip tie)**



1. Reconnect the camera harness that you removed from the grill to the connector above your headlight. Run the harness down between the core support and your headlight. Attach the provided **89758 camera harness** to the factory harness. Once the Bodyguard bumper is installed the excess camera harness will run through the cutout in the baja bar up to the camera.

Camera harness routing.



## ADAPTIVE CRUISE CONTROL RELOCATION BRACKET (*Optional*)

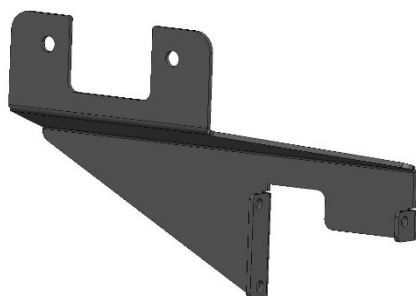
There are **TWO OPTIONS** for ACC relocation. If you do not use the grill guard mesh, you will need to continue onto the next page. Note: Bracket #72953 will be mounted behind the grill and radiator shutters. This location **WILL NOT** work if you install the grill guard mesh. ACC Brackets pictured below:

**Two** ACC brackets are included with all shipments.

(Use only one for install, depending on if you use the grill mesh or not)

### Bracket #72953

(fits behind factory grill)

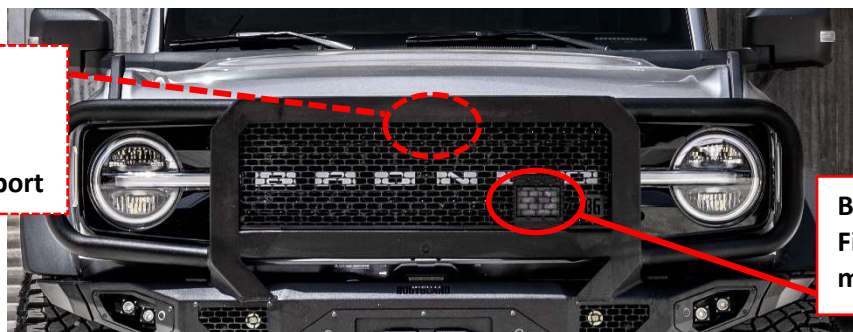


### Bracket #45360

(fits behind Bodyguard mesh)



Bracket #72953  
Fits behind factory  
grill between hood  
latch and core support



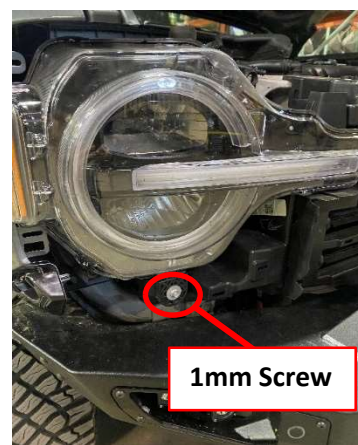
Bracket #45360  
Fits behind Bodyguard  
mesh in the grill guard



1. Remove both driver and passenger fenders flares by twisting the quick release tabs. Once all tabs are rotated counterclockwise, firmly pull the fender outwards away from the vehicle to unclip.



2. Remove the lower body trim by firmly pulling at the joint where it meets the fender. Once both sides have been disconnected from the fender, firmly pull from the center. This will reveal the screws required to fully remove both headlights. To remove the headlights, there are 2x 10mm screws on top, 1x 8mm at the bottom, and 1x Christmas Tree clip (per side). Once all screws and clips have been removed, gently pull on the headlight from the center of the vehicle to unseat from the clip. Then unplug the headlight from the factory harness. Repeat on the other side.

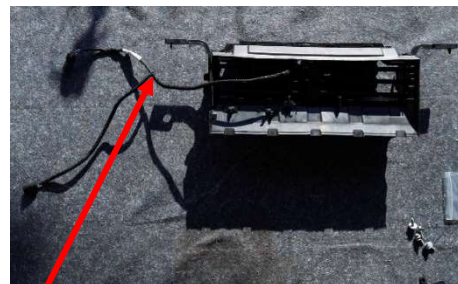


3. Remove the radiator shutters by removing 4x 10mm screws on top, and 4x 10mm screws on the front. Once screws are removed, unplug the harness connecting the shutters and remove.





4. Remove the ACC module from the factory ACC bracket that is mounted to the radiator shutters and remove the rubber grommets from the ears of the ACC module. Install the ACC module to the ACC relocation mount using the provided spacers and 1/4-20 hardware. **(You may need to unravel the acc cable from the harness to gain length to reach the module).** Reinstall all front-end components that were removed. Set the assembly to the side for future steps.



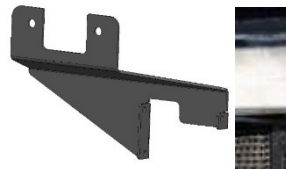
Use the provided spacers so plastic void doesn't collapse when tightening.

Bolt head this side

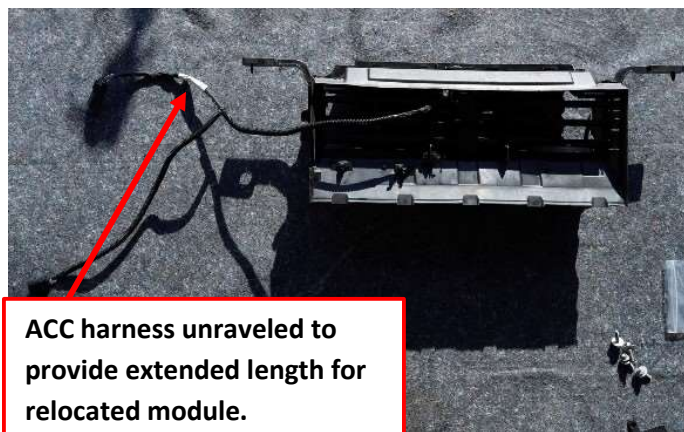
ACC harness unraveled to provide extended length for relocated module.

5. **...SKIP THIS STEP IF MOUNTING ACC MODULE IN THE GRILL GUARD...**

Remove the hood latch by removing 2x 10mm screws. Install the ACC relocation bracket in between the hood latch and the core support. Close the hood to make sure hood latch is in the proper position. Calibrate your ACC module by adjusting angle on the bracket. Place a level on the non-raised face of the ACC module. Once module is leveled, tighten all the hardware connecting the mount to the bracket. Plug in the ACC module **(you may need to unravel the acc cable from the harness to gain length to reach the module)**. Reinstall all front-end components that were removed.



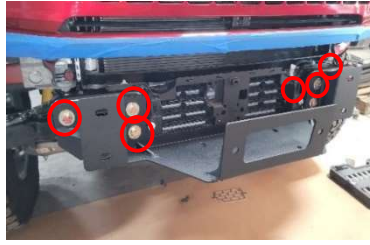
ACC Relocation Bracket may vary depending on options and configuration



ACC harness unraveled to provide extended length for relocated module.

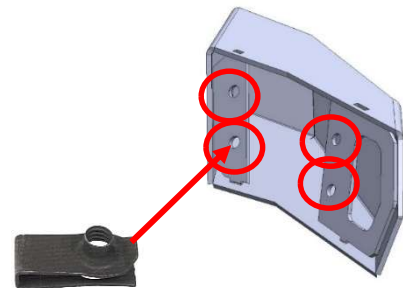
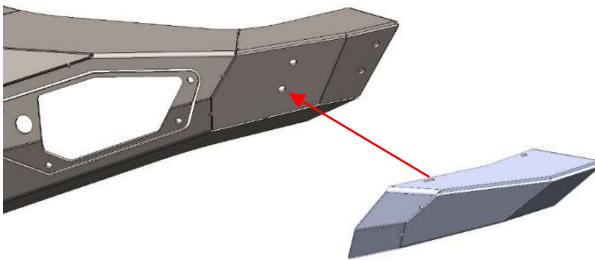
# WINCH MOUNT INSTALL

From hardware bag #3, install the sub frame to the frame using the (6) M12 bolts and washers from hardware bag #1 provided. Then, install the winch fairlead to the sub frame if applicable. ***\*At this time, install your winch if applicable.\****



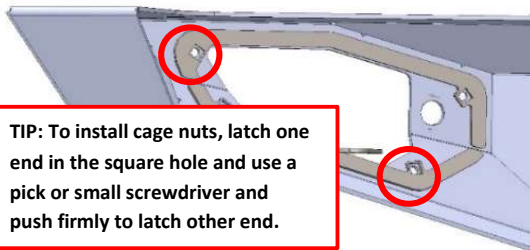
## OPTIONAL END CAPS

1. From Hardware bag #2 install (4) 5/16" clip nuts on the wing end plates circled below. Then install the end caps to the bumper wing using the (4) 5/16" hardware. (End caps are optional) ***If end caps are not used, install the 5/16" bolt and flange nut to plug the 4 holes.***



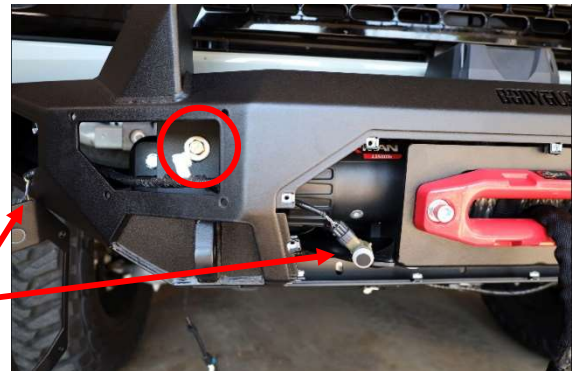
## BUMPER INSTALL

2. Install (40) 1/4"-20 cage nuts in all square holes on the bumper except the two circled areas shown below (*two per side*). You will install cage nuts on the fog light buckets in those areas. Cage nuts should be installed from the backside of the bumper.
3. Loosely route the parking sensor harness and sensors through the Bodyguard bumper section and place the parking sensors in their proper location. Then carefully place the bumper up to the subframe using the (4) 1/2"-13 x 1-1/2" Long hardware using an 19mm socket.



**TIP:** To install cage nuts, latch one end in the square hole and use a pick or small screwdriver and push firmly to latch other end.

**Parking Sensor Routing**  
(2) Mounting bolts to each side.



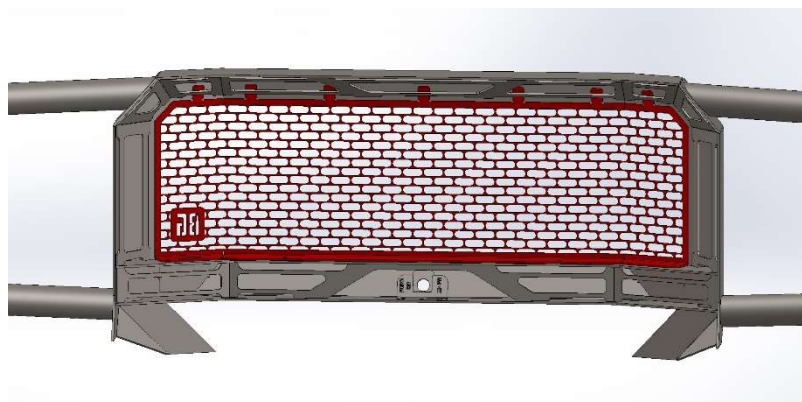
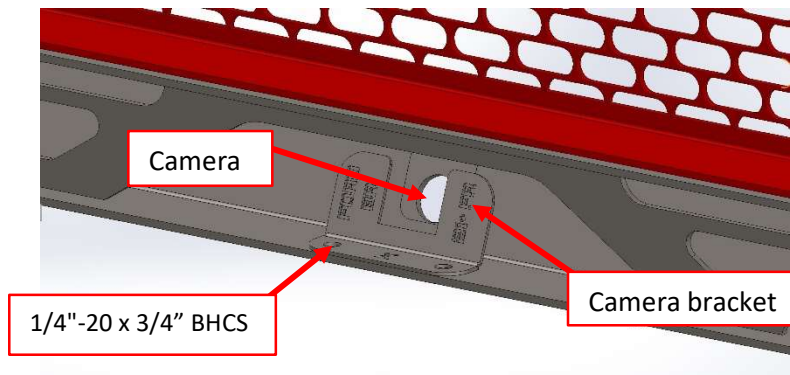


4. Adjust fitment vertically and horizontally using a tape measure, then tighten hardware.
5. Install 1/4"-20 cage nuts into the parking sensor plates. (Images below are example sensor plates). Then install the sensor tab over the sensor shown below. Slide the sensor and sensor tab into position and tighten down with a 1/4"-20 x 3/4" BHCS. Tighten screw finger tight. **Do not over tighten.** Set the plates and sensors aside.



## EXTREME GUARD CAMERA INSTALL

1. From hardware bag #1, install the camera pod to the baja bar using (2) 1/4"-20 cage nuts and (2) 1/4"-20 x 3/4" BHCS. Then install the camera into the pod and secure with the camera bracket using (2) 1/4"-20 BHCS and flange nuts.



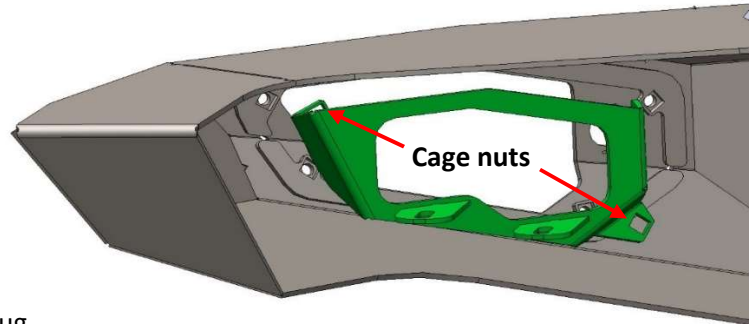
**NOTE:** If front license plate is required, optional front license plate bracket will need to

**be purchased with this bumper.**

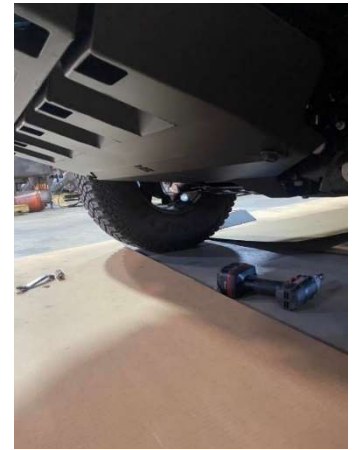
1. If your vehicle does not come equipped with parking sensors, install the provided plugs and install them into the parking sensor holes. Install your desired fog lights onto the fog light buckets, then install the fog light buckets onto the bumper along with the sensor plate for the fog lights. The fog light buckets and the sensor plates will bolt together. Be sure to plug in the sensor to the harness before installing.



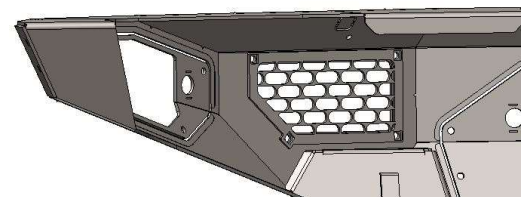
Parking sensor plug



2. Install the 2x factory skid plate hardware loosely and slide the secondary skid plate onto the bolts. Let the skid plate hang and install the front of the primary skid plate to the bumper using the (4) 5/16" hardware. Then install the primary and secondary skid plate using the remaining factory skid plate hardware.

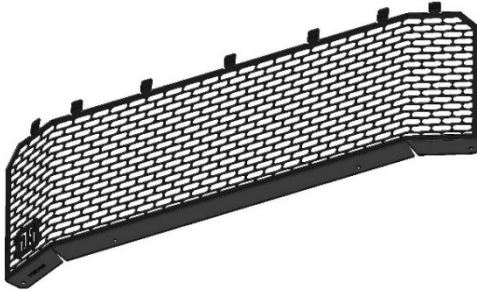


3. Plug the sensors into the harness on the front winch cover plate and install to the bumper. Then install 1/4"-20 cage nuts onto the mesh bolt in plates and install the plates on each side of the bumper.



## EXTREME GUARD MESH INSTALL(*Optional*)

1. Then install the Extreme Guard mesh using 2x 1/4"-20 x 3/4" BHCS and flange nuts
2. The mesh to cover the center opening of the grill guard upright is an optional removable piece. If you choose to run this mesh, you **CAN NOT USE BRACKET #72953 THAT FITS BEHIND THE FACTORY GRILL**. You will need to use the mesh bracket (*Bracket #45360*) shown in the section below.



3. Install the mesh by sliding the top tabs under the webbing on the Extreme Guard. Once the tabs have are slid into place, bolt the mesh in place using the provided 1/4"-20 hardware. (If you have Adaptive Cruise Control, you will want to leave the two driver side bolt locations open.

## ADAPTIVE CRUISE CONTROL RELOCATION (*Optional*)

*If you chose to keep your Extreme Guard mesh, follow the instructions below:*

1. Now install the assembled ACC module and mount to the Extreme Guard ACC mesh bracket #45360. First install 2x Cage nuts into the square openings on the ACC mesh bracket. Install the ACC Mesh bracket onto the driver side of the mesh mounting holes using 2x 1/4"-20 hardware. Then install the ACC module bracket onto the mounting bracket. Leave the hardware loose as you will need to calibrate it with a level. Place a level on the back side of the bracket (visible side) and level the ACC model and tighten down. Double check that the module is level once fully tightened. Then install the mesh bracket cover plate using 2x 1/4"-20 screws. Lastly plug in the ACC module (**the harness will need to be unraveled and separated from the lower cooling louvers to extend the ACC plug length**).



**NOTE: If front license plate is required, optional front license plate bracket will need to be purchased with this bumper.**



## FINISHING UP

- Install shackles.
- Confirm that all hardware is tightened, and everything is secure.
- Secure wiring harnesses for lights and sensors.
- Reconnect the battery.
- Test all lighting and wiring before using vehicle (fog lights, sensors, etc.).

## MAINTENANCE

- Periodically check that all hardware is tightened and that all wiring and connections are secure.
- Periodically check that all sensor plugs are secure.
- Routinely wash bumper to maintain the powder coat finish.

## FEEDBACK

We'd love to hear from you!

Please send your pictures, testimonials, comments, or suggestions to us by email at [info@bodyguardbumpers.com](mailto:info@bodyguardbumpers.com). We frequently use customer pictures for brochures and marketing materials, and we always welcome customer feedback to ensure quality improvements within our company. Thanks for your purchase; we appreciate your business very much!

**Where STRENGTH Meets *Style!*™**



@BodyguardBumpers