



491 W. Garfield Ave., Coldwater, MI 49036

Phone: 517-279-2135

Web/live chat: [www.bds-suspension.com](http://www.bds-suspension.com)

E-mail: [tech@bds-suspension.com](mailto:tech@bds-suspension.com)

Part#: **55363**

Product: **Dual Steering Stabilizer**

Application: **2001-2009 Chevy/GMC 2500/3500 HD**

---

## READ AND UNDERSTAND ALL INSTRUCTIONS AND WARNINGS PRIOR TO INSTALLATION OF SYSTEM AND OPERATION OF VEHICLE.

---

### PARTS LIST

Part #	Qty	Description			
			308	1	Bolt Pack
01518	1	Outer Stabilizer Mount (pass)		4	1/4" USS flat washer
01519	1	Outer Stabilizer Mount (drv)		4	5/16"-18 prevailing torque nut
01551	1	Centerlink Stabilizer Mount	322	1	Bolt Pack
P00932	2	Stud Pack		2	1/2"-13 x 2-1/2" bolt
561140200R	2	5/16" x 1-1/4" x 2" U-bolt		2	1/2"-13 prevailing torque nut
				4	1/2" SAE flat washer

### INSTALLATION INSTRUCTIONS

1. Park the vehicle on a flat, clean surface and block the rear wheels for safety.
2. Raise the front of the vehicle and support with jack stands under the frame rails.
3. Install the provided shock studs on the driver's (01519) and passenger's (01518) outer stabilizer brackets. Fasten with the provided nut and lock washer. Tighten securely. (Fig 1)



Fig 1 - driver's side



Fig 1 - passenger's side

4. Remove the nut from the passenger's side front lower control arm mounting bolt. On lifted vehicles with the lower control arms relocated, it will be the bolt mounting the new crossmember to the factory crossmember. (Fig 2)
5. Install the bracket on the bolt so the tab goes to the outside and the shock studs points to the rear. (Fig 3) Fasten with the original nut/washer and torque to 125 ft-lbs.
6. Repeat outer bracket install on the driver's side of the vehicle.

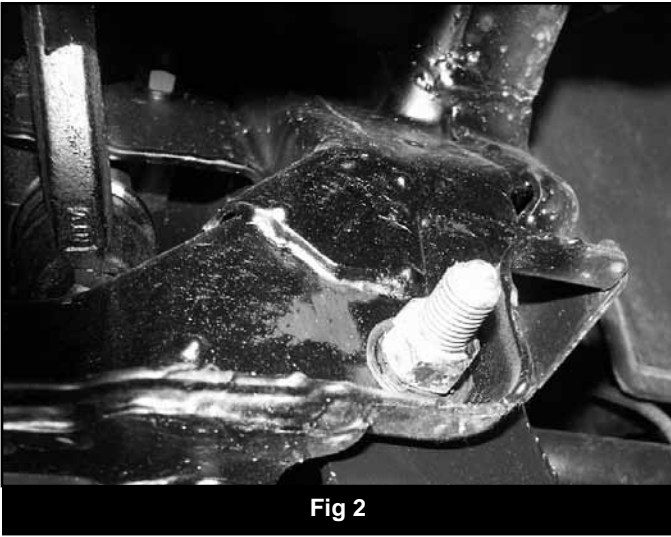


Fig 2

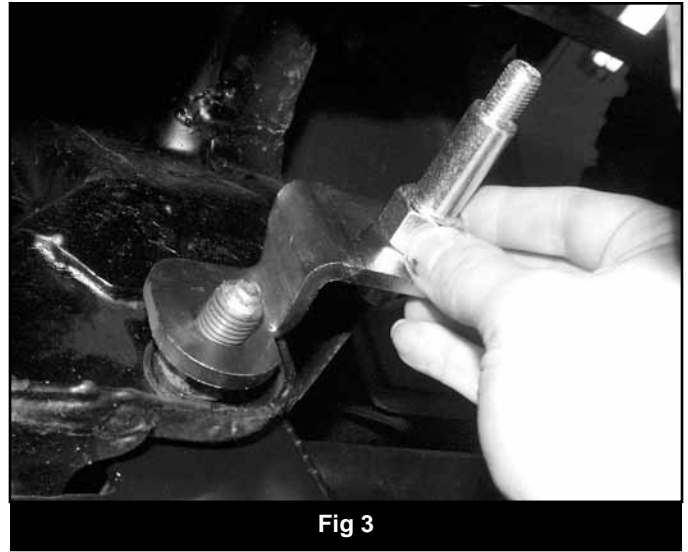


Fig 3

7. Locate and mark the center of the steering centerlink. To locate the center, measure the distance between the pitman arm stud and idler arm stud and divide in half. Mark the location clearly. The new stabilizer centerlink bracket will be centered on this mark.
8. Locate the new centerlink bracket, u-bolts and 308 bolt pack. Position the new centerlink bracket on the front side of the centerlink so that two stabilizer mounting holes are pointing down. (Fig 4) Fasten the bracket to the centerlink with the provided 5/16" u-bolts, nuts and washers (BP 308). The u-bolts will be running from the back to front. Be sure the bracket is centered on the locating mark made earlier. Snug bracket hardware. Note: There is a hole in the center of the bracket to be used for positioning.

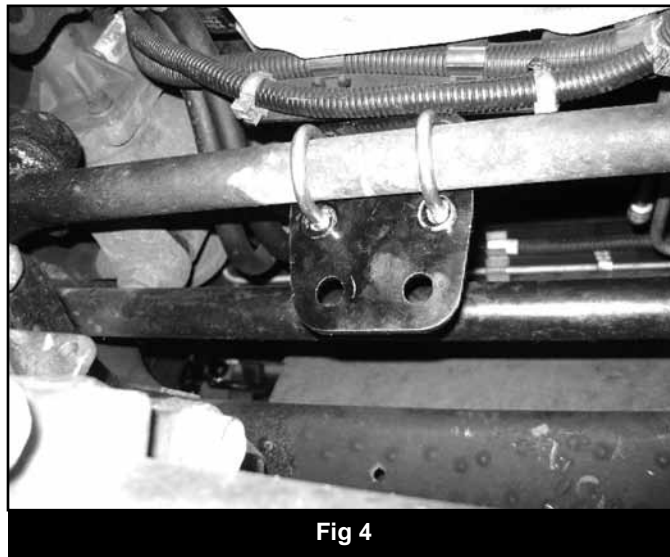


Fig 4

9. Locate the new steering stabilizer cylinders. Install the provided hourglass bushings into each stabilizer end. Install the provided sleeve into the ROD end of the stabilizer only.
10. Attach the stabilizer cylinders to the outer mounting studs with the provided nuts, lock washers and flat washers (one on each side of the bushing). Tighten nut to 35 ft-lbs.
11. Attach the ROD ends of the stabilizers to the centerlink bracket with the provided 1/2" hardware (BP 322). Torque bolts to 60 ft-lbs.
12. Check steering functions and for proper clearances. Be sure the centerlink bracket is centered properly and torque u-bolt nuts to 20-25 ft-lbs.
13. Check all hardware for proper torque.
14. Lower the vehicle to the ground.
15. Check hardware/cylinders after 100 miles.