



MADE IN THE USA

INSTALLATION MANUAL

STEP SLIDER BD-SS-200-JK4



Description	Quantity
Electric Step Slider (Pair)	2
Bump stop plate with VHB backing	2
Wiring harness (2 piece)	1
Double sided adhesive squares	12
Door sensor	4
Magnets	4
Alcohol wipes	4
Rocker cutoff switch	1
Circuit board	1
5/16" - 18 nylock nut (for studs)	8
5/16" stainless steel washer (for studs)	8
1/4" - 20 nylock nut	4
1/4" - 20 stainless steel washer	4
5-16" - 18 X 1" grade 8 hex head bolt	24
5/16" SAE yellow zinc washer	24
Front bracket (tall style)	2
Middle bracket (short style)	2
Rear brackets (long style)	2

Front Bracket



Middle Bracket



Rear Bracket



AN OVERVIEW INSTALLATION VIDEO CAN BE FOUND ONLINE ON OUR WEBSITE

TO HELP GUIDE YOU THROUGH THE PROCESS

Tools Required	
10 mm socket	7/16" socket
18 mm socket	1/2" socket
19 mm socket	Wrench with 3-4" extension
Breaker bar	
7/16" Box end ratcheting wrench	1/2" Box end ratcheting wrench

****Optional for quicker installation****

Impact Gun with adapters	Heavy Duty Impact Gun with 1/2" driver
--------------------------	--

Notes and Maintenance

Before you begin installation, read all instructions thoroughly.

Proper tools will improve the quality of installation and reduce the time required.

No maintenance required on waterproof harness or water-resistant motors. If mud or dirt is built up on the steps, simply spray them off and let them air dry.

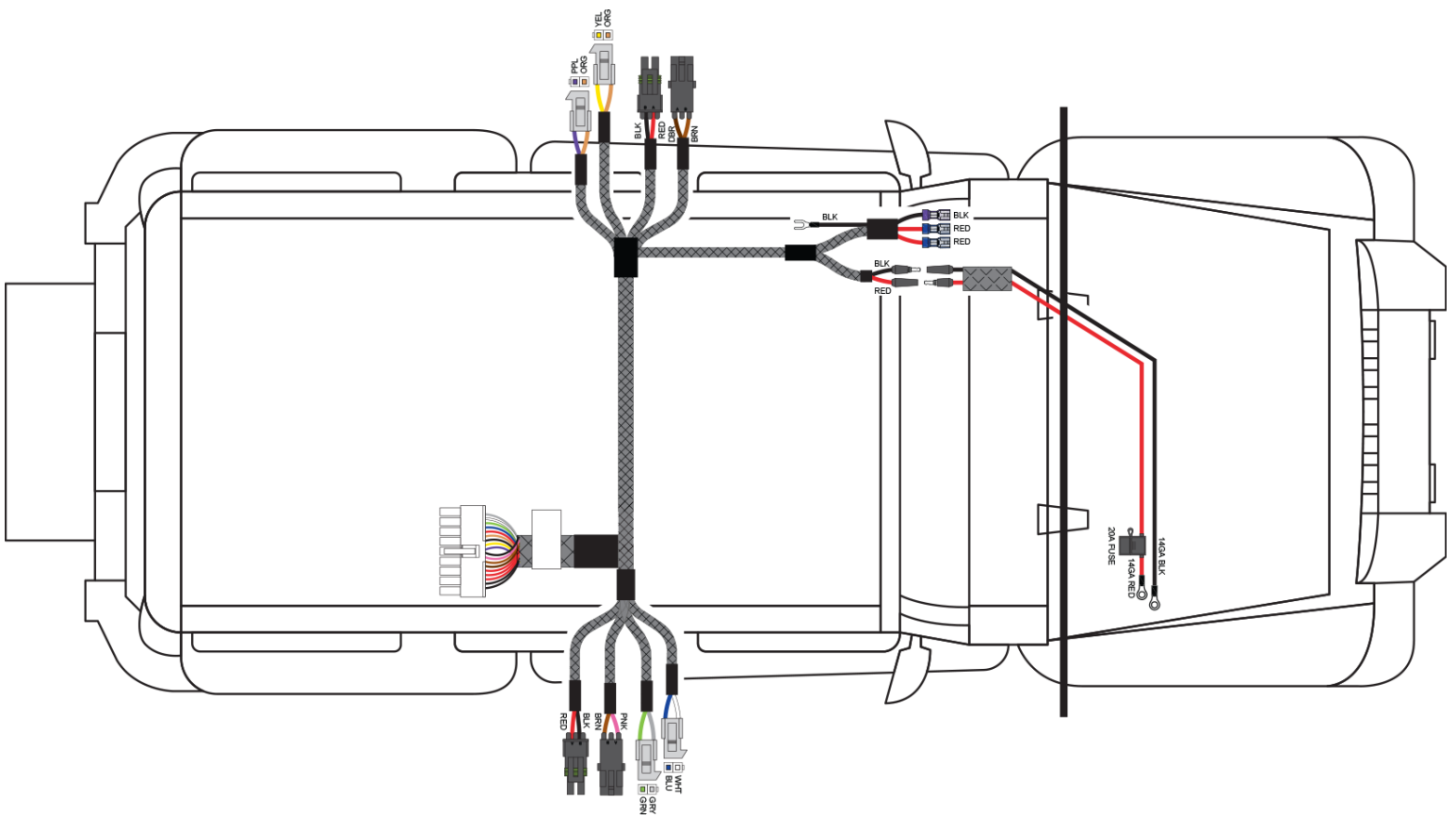
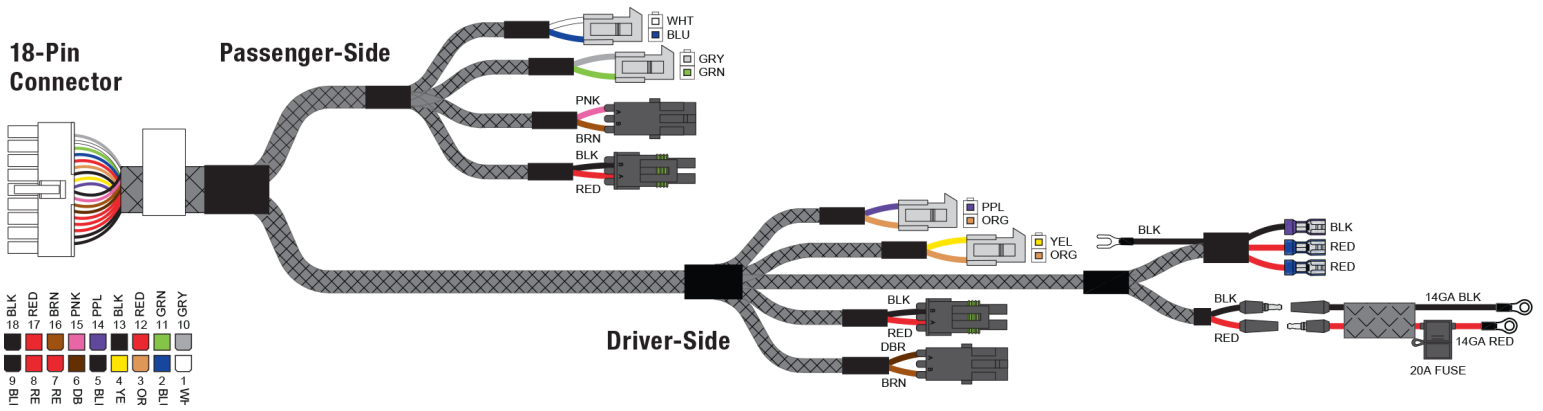
Mild automotive detergent may be used to clean the product. Do not use dish detergent, abrasive cleaners, abrasive pads, wire brushes or other similar products that may damage the finish.

Periodic inspection of all wires and connections should be performed to ensure there is no visible damage or loose connections.

Refer to the last page of this manual for troubleshooting, warranty and product registration information.

Wiring Locations

Driver	Door sensor, rear	Purple / Orange
	Door sensor, front	Yellow / Orange
	LED light	Brown / Dark brown
	Actuator	Black / Red
Passenger	Door sensor, rear	White / Blue
	Door sensor, front	Grey / Green
	LED light	Pink / Brown
	Actuator	Black / Red



Step 1

Start on the drivers side.

Remove two front pinch seam bolts using a 10mm socket and wrench. Leave the holes open.

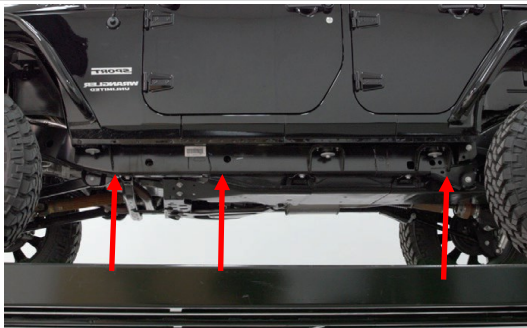
Keep the hardware as you will re-install it in the final step.



Step 2

Starting on the driver side, locate the three body bolts on the underside of the vehicle. Back the three body bolts about 1/4" to allow free movement of the washer up and down.

**Breaker bar may be required to loosen the body bolts.



Step 3

With each body bolt loose, slide each bracket between the bolt head and the washer in their correct positions. Install the rear and middle brackets in straight.

Rear—Long Bracket



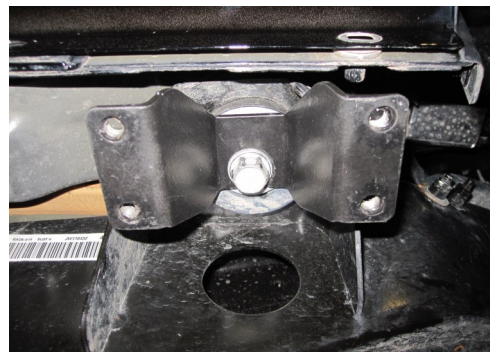
Middle—Short Bracket



Step 4

Install the front bracket at a 45 degree angle to the jeep, with the bracket between the head and washer, and twist straight so the bracket faces towards the side of the jeep.

Front—Tall Bracket



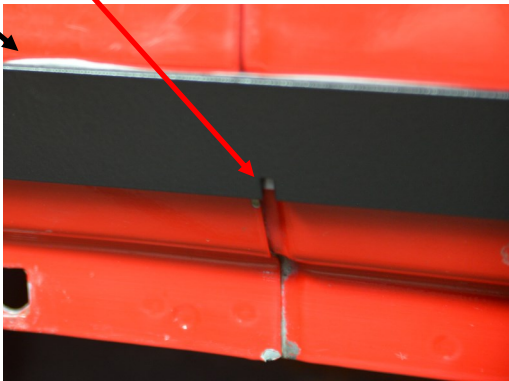
Step 5

Install bumper strap onto the side of the vehicle where the bend just under the door is located:

Test fit the bumper strap by lining up the strap straight across the jeep bend, with the little notch towards the rear of the jeep over the seam facing down. The top of the bumper strap should be as close to the bend as possible with the exception of the front (see special note)

****The front of the bumper strap will sit SLIGHTLY 1/8" - 3/16" lower than the rear of the bumper strap when lining it up with the bend on the vehicle. This will ensure the step sliders mount flush with the full bumper strap seal.**

Once you have the correct location, pull the VHB plastic and adhere to the jeep in the desired test fit location. The bumper strap will be installed with the slope towards the ground (far right)



Step 6

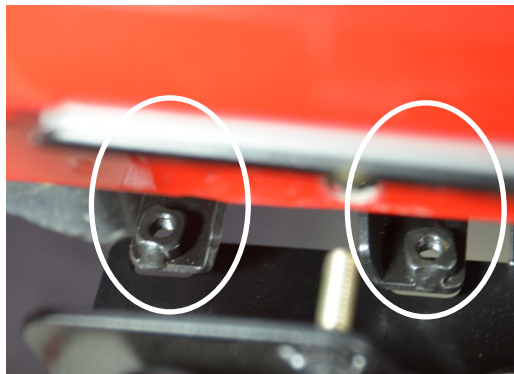
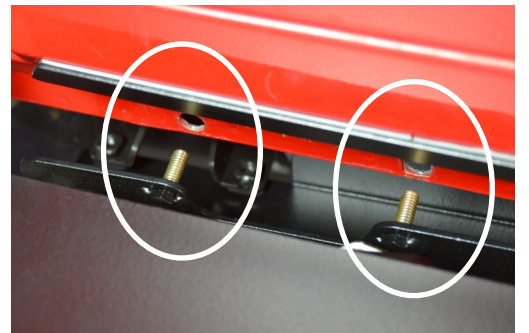
Pull the motor wire and slide it through the existing hole right above the rear bracket mounting location.

Mount step sliders on the driver side of the vehicle.

Line up the step with the pinch seam holes and slide the step studs through the pinch seam. The brackets mounted earlier should slide above the body. There should be some play in the brackets to allow up and down movement to slide above the body.

Once mounted, the step should hang on to the pinch seam by itself.

****Do NOT apply weight to the step yet as it is unsecured.**



Step 7

Start to secure Step Slider to the pinch seam using:

Use **TWO** 1/4" - 20 nylock nuts and stainless steel washers on the 2nd bolt in the front window, and the 2nd bolt in the 2nd window.

Use **FOUR** 5/16" - 18 nylock nuts and washers on the front window 1st bolt, center window 1st bolt, and rear 2 bolts.

Tighten down about halfway.



Step 8

Install **12 5/16" - 18 x 1"** with a hex head bolts with yellow SAE washers into the bracket through the slots on the underside of the step slider.

Install bolts halfway just to hold them in place.



Step 9

Once all bolts and nuts have been started, tighten down pinch seam nuts:

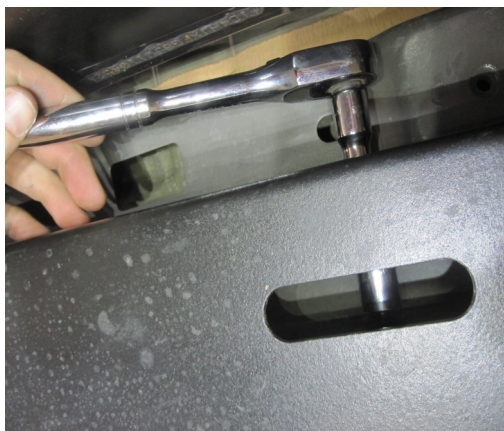
Use a **1/2"** socket and wrench with a 3-4" extension for the **5/16" - 18 nuts**.

Use a **7/16"** socket and wrench with a 3-4" extension **1/4 - 20 nuts**.

Torque 5/16" nuts to 18 ft. lbs.

Torque 1/4" nuts to 9 ft. lbs.

****If sockets do not fit, use a 1/2" and 7/16" box end ratcheting wrench to tighten down the bolts.**



Step 10

Tighten down 5/16" hex hex using a **1/2"** socket and wrench.

Torque to 18 ft. lbs.

****For a quicker install, use a torx gun with an adapter for a 1/2" socket.**



Step 11

Tighten down body bolts last.

Torque to 80 ft. lbs.

Repeat steps 1-11 on the passenger side.



⚠ WARNING

Improper electrical installation may result in personal injury. Unless you are familiar with the installation and handling of electrical systems, have this step performed by someone who has that familiarity.

Step 12

Remove floor mats from the jeep.

Loosen front kick panel.

Remove center panel to allow access for wires.



Step 13

Remove fuse from harness.

Attach RED—POSITIVE and the BLACK—NEGATIVE.



Route the harness across the engine bay and through the firewall.

Secure with zip ties.



Step 14

Unravel the large harness in the rear seat and route the connectors to the front of the vehicle under the removed panels.

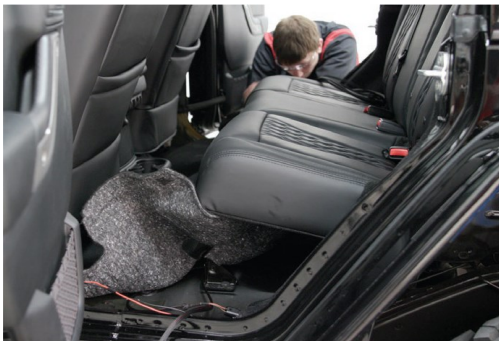


Step 15

Remove floor plug on the driver side.
Make a slit in the plug to run your wires through.
Run motor connector through the open hole.
**If installing optional light kit, run light connector down through the hole.
Repeat on the passenger side.



Run circuit board plug and passenger side connectors under the carpet to the passenger side of the vehicle.



Step 16

Refer to diagram below and **page 2** for sensor location and wire color.
Plug sensors into harness. Route sensor to door jam. Install on each door under the latch as shown.



Wiring Locations		
Driver	Door sensor, rear	Purple / Orange
	Door sensor, front	Yellow / Orange
	LED light	Brown / Dark brown
	Actuator	Black / Red
Passenger	Door sensor, rear	White / Blue
	Door sensor, front	Grey / Green
	LED light	Pink / Brown
	Actuator	Black / Red



Step 17

Install magnets onto the door under the door latch. Check to make sure it is center over the sensors.



Step 18

Install the master switch bracket near the front driver kick panel behind the door strap bracket.

Loosen the two bolts where the door strap attaches, slide the bracket behind the door strap bracket, tighten the bolts back down to 7-8 ft lbs.



Run the wires through the bracket.

Plug the blue female connector into the silver male ends and the red female connector into the bronze male end.

Push the rocker switch into the bracket.

Install ground wire behind the bracket so it is in contact with the chassis.

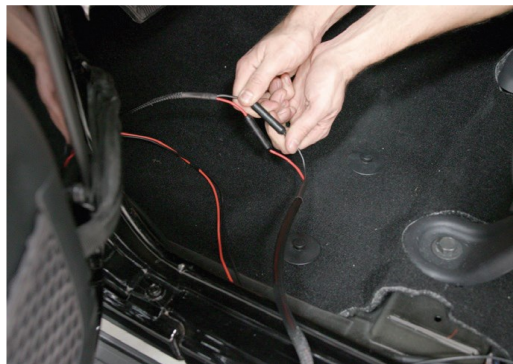


Step 19

Once all sensors are installed and the wiring has been run, plug the small wiring harness into the large harness.

Plug in circuit board to the large harness and secure it under.

Reinstall fuse into harness.



Step 20

Re-install the panel bolts removed in step 1.

Re-Install kick panels back into place in the jeep.





TROUBLESHOOTING YOUR STEP SLIDERS:

I just installed my steps and they are not coming down when I open the door.	Double check the connections. Check the fuse to make sure it is plugged in. Is the on / off switch getting power? Is the circuit board plugged in? Are the door sensors plugged in?
My switch is getting power, but the light stays on in both positions.	The light is only supposed to be on when the system is turned on. If it is lit in both positions simply switch the red wires on the back. Will this kill my battery with the light constantly lit? This will not kill your battery unless you leave it lit for a month with no use.
Everything is plugged in and the switch is turning on and off, but the steps still won't deploy.	Check the motor first. Simply unplug it from the wiring harness and apply external 12V power to the leads. One position will make them deploy. Switch the leads again to make them retract. If this works, plug the motor back into the harness. We test each and every motor that leaves our factory by hand along with assembling your step slider by hand. These may fail, but it is extremely rare after we send them after having tested them. If you test the motor and all you hear is a clicking sound but nothing happens, there is likely internal damage.
I tested the motor, and it works. I checked the sensors individually, and the system still won't work. The steps don't deploy unless I do it manually with 12V power.	In rare circumstances, the circuit board that runs the system may be faulty. Call our support team for a warranty help at 435-752-4580
I opened my door a bunch of times and the system just shut off. What happened?	Our systems have built-in protection against quick cycling like this to prevent damage. Simply turn your on / off switch to off, wait 5 seconds, and then turn it on again. This will reset the system and allow it to work normally again.
Everything is working now. But I want to take my doors off and have the steps still work.	We sell a door delete kit you can replace those sensors with. Part# SL-DD-100 comes with everything you need for two doors. If you want to install a delete kit on the rear doors as well, you will need to purchase two kits.
The steps deployed and won't retract. What is going on?	Chances are your magnets are misaligned. To diagnose which door needs to be adjusted, unplug the rear sensors with the front doors closed. If your steps come up, then it was the rear doors that need to be aligned with your magnet. If the step stays down, the front door needs to be aligned. Open your door, shift the magnet in a direction, and shut it again. Repeat until the step comes up when the door is shut. Mark the magnet placement on the front door. Plug the rear door sensor in, shut the rear door and front door, and see if it comes up. If not, the rear door is misaligned (Since we just aligned the front door we know it's the rear door now). Repeat the previous process of opening your door, shifting your magnet, and shutting your door until the step comes up. It may take a few tries. Option 2 Check the sensors. Unplug both of them from the wiring harness on the side that is not working, and plug one back in. Manually test your sensors by putting a magnet really close (but not touching) to the sensor. Does it make the step retract? When the magnet is away, the step should deploy. If the steps deploy right after installation, more than likely your magnets just need to be aligned. Do this one by one with each sensor by the method above. Install one sensor, test, align the magnet on the door, test, and then mark the position of the magnet so if for some reason they do move out of place you can easily realign them.
I was off-roading, left my system on, someone left the door ajar and I ripped my step off on a rock. What now?	We can replace these parts for you at cost. You will have to remove the step off your vehicle to replace the innards. Call us and we'll figure out what you need exactly! If you prefer us to do the repair we will do that for you! You will have to cover shipping to us and the cost of the parts, but we will ship it back to you (from our warehouse to your house) on our account.

WARRANTY POLICY

ROCK SLIDE ENGINEERING, LLC (RSE) covers a limited warranty ensuring the structure is free of material defects and workmanship, under proper installation and normal use/conditions. Additionally, the electrical components (including the motor) and the finish (powder coat) will be free of defect for a period of (12) months (1) year from the original purchase date. This warranty only applies to the original retail purchaser, the original installation of the product, and the original installation vehicle. This warranty does not cover removal or reinstallation of the product and is NON-TRANSFERRABLE. No retailer, reseller, dealer, or agent is authorized to make modifications, extensions, amendments, or additions to this warranty.

For products to be considered under the warranty policy, a warranty claim form must be submitted at www.rockslideengineering.com/warranty. All claim fields must be filled out and include the following: name, address, telephone number, email address, original purchase receipt (**required to qualify for warranty**), images, videos, and description of the issue. Once a claim is submitted, all warranty items will be initially reviewed for eligibility utilizing customer provided information from the claim form. Additionally, if the product is sent back to our manufacturing facility, the items will have a physical inspection to assure it meets our criteria; and the original purchaser is responsible for shipping expenses to return the defective product to RSE.

RSE HAS THE RIGHT TO REFUSE/VOID A WARRANTY IF THE PRODUCT FALLS UNDER ANY OF THE VOID ACTIONS AS STATED BELOW; AND WILL NOT BE ELIGIBLE FOR EXCHANGE, REFUND OR WARRANTY CONSIDERATION.

ACTIONS THAT WILL VOID YOUR WARRANTY:

- IF PRODUCT WAS NOT PURCHASED DIRECTLY FROM RSE OR AUTHORIZED RSE RETAILER OR DISTRIBUTOR.
- PROOF OF PURCHASE CANNOT BE PROVIDED OR FOUND.
- INSTALLATION OF THE PRODUCT WITHOUT USE OF PROPER INSTRUCTIONS.
- INSTALLATION OF THE PRODUCT ON THE WRONG VEHICLE OR MODEL.
- IF DETERMINED THAT PRODUCT INSTALLATION WAS MODIFIED, CHANGED, ALTERED OR CUSTOMIZED IN ANY WAY.
- REINSTALLATION OF PRODUCT ON ALTERNATE VEHICLE.

Additional Warranty Information:

Return Merchandise Authorization (RMA) will be assigned from an RSE warranty representative and given to the customer after the initial analysis has been completed. Instructions for how to ship your product safely to RSE will be given with your RMA. **Damages, rebuild, and cleaning fees may apply if the product is delivered without meeting shipping instruction requirements.** If the product arrives to RSE and does not qualify for the warranty after a physical inspection, alternative options will be provided to the customer at that time.

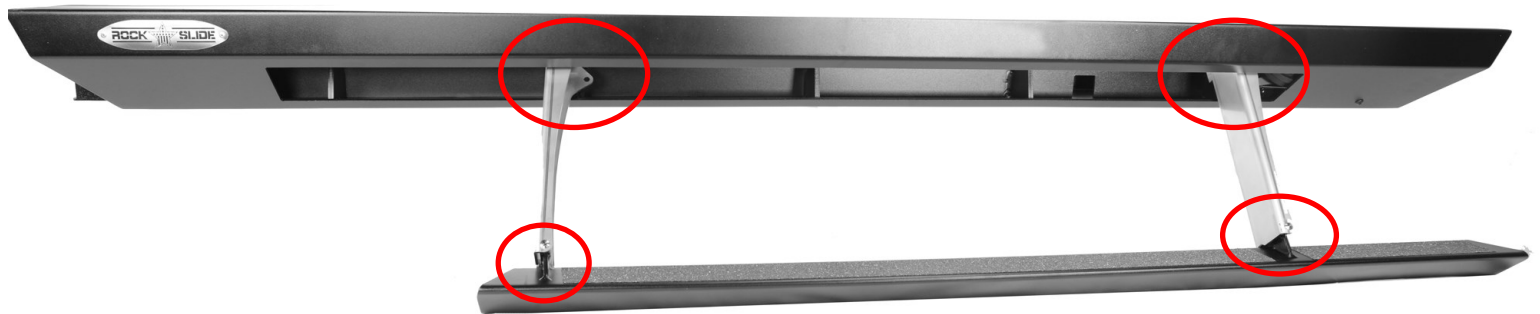
For questions or concerns: please contact our office at 435-752-4580 and ask for the warranty department or email us at warranty@rockslideengineering.com.



MADE IN THE USA

GENERAL MAINTENANCE MANUAL

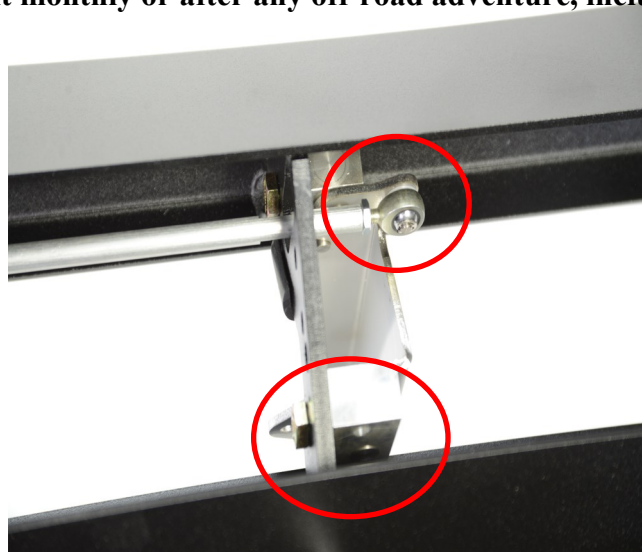
To ensure your step sliders function properly, some maintenance is required!



You will need to lubricate the pivot points that are circled in red shown above.

Lubricate the heim joints and aluminum blocks as shown below.

We recommend you do it monthly or after any off-road adventure, including during winter months.



Deploy the steps, pressure wash the bodies clean including internals, then apply a multipurpose lubricant to each of the areas as shown.



Here are several options on lubrication that are carried at the local auto stores in most areas