

Installation Guide for 09–18 Dodge RAM Headlights (Quad Reflector or Single Projector Models)

Posted by  [arexusa](#)

On July 27, 2025

Comments Off on Installation Guide for 09–18 Dodge RAM Headlights (Quad Reflector or Single Projector Models)

NOTE: *Some vehicle require the DRL harness installed for the headlight to function properly.*

Do NOT use dielectric or any type of weather sealing grease on connectors or sockets.

Doing so will result in connection problems and will not be covered under warranty. Please click [HERE](#) for further explanation.

Table of Contents

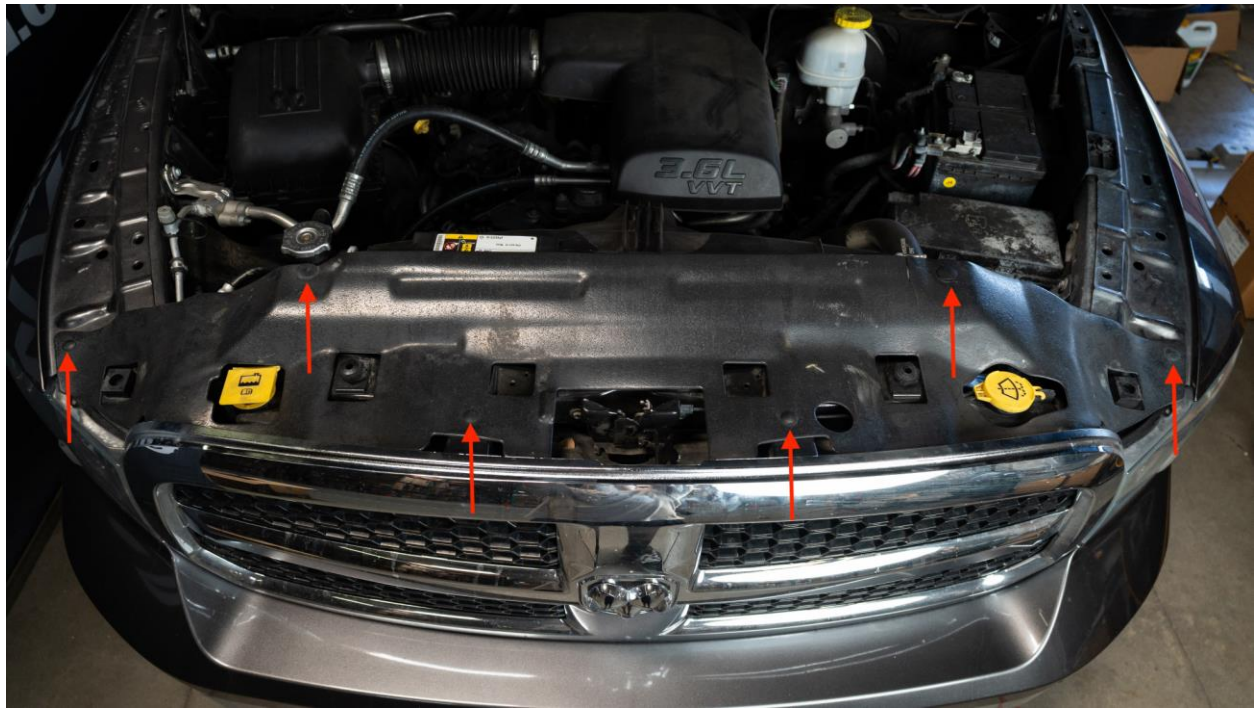
- [PART I - Remove Headlights](#)
- [Uninstall OEM Headlight](#)
- [PART II - Install Headlights](#)

Disclaimer: This installation article is a tutorial guide. By reading this article, you agree it is for reference only and AlphaRex USA and its distributors make no guarantee on the finished results. Under no circumstances whatsoever shall AlphaRex USA nor its distributors be liable for any damage, misuse or personal injuries. If you do not fully understand the installation procedure, it is highly recommended that you seek help from professional mechanics to do the installation.

PART I - Remove Headlights

Uninstall OEM Headlight

To begin uninstalling the headlights, open the hood and remove the plastic cover located at the top of the grille. This cover is secured with six clips that will need to be carefully removed.





With the plastic cover removed, you can now proceed to take off the grille. It is secured by four 8mm bolts that will need to be removed.



With all four bolts removed, firmly pull on the lower portion of the grille to release it—it may require a bit of force to pop it free.



With the grille removed, you now have access to the headlight. It is secured by two 10mm bolts at the front and a locking clip at the back that will need to be released.

First remove the two 10mm.



After removing the two bolts, you can move on to releasing the locking clip at the back of the headlight. To access it, open the “hatch” in the wheel well liner—this panel is held in place by a single clip that will need to be removed.





With the hatch opened, reach inside and locate the locking clip. To release the headlight, pull the clip back and then push it upward until it disengages.





With the locking clip released, you can now carefully pull the headlight assembly away from the vehicle.





With the headlight pulled back, disconnect the two plugs attached to the light. Additionally, remove the clips securing the wiring behind the headlight to fully free the assembly.



Keep in mind that the larger plug is for the turn signals, while the smaller plug is for the low and high

beams.



With the headlight fully removed, you can now proceed with the installation of your new headlight assembly.

PART II - Install Headlights

Install the Alpharex Headlights

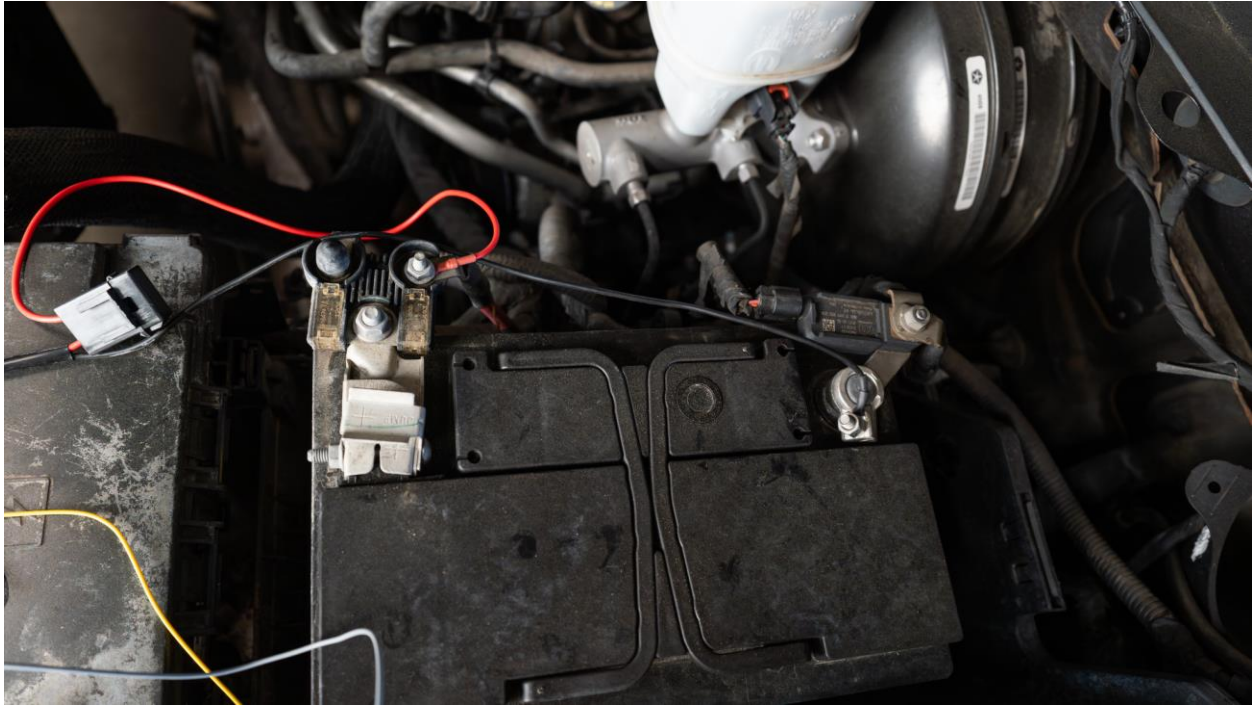
We can now begin installing your new AlphaRex headlights. Before proceeding, note that there are two optional/potential steps:

1. **DRL Harness Installation** – This is optional but recommended for full functionality of the daytime running lights.
2. **Factory Projector Headlight Adapter** – If your vehicle came equipped with factory projector headlights, an additional adapter will need to be installed for proper compatibility.

DRL harness install:

If you will be installing the DRL harness follow the following steps.

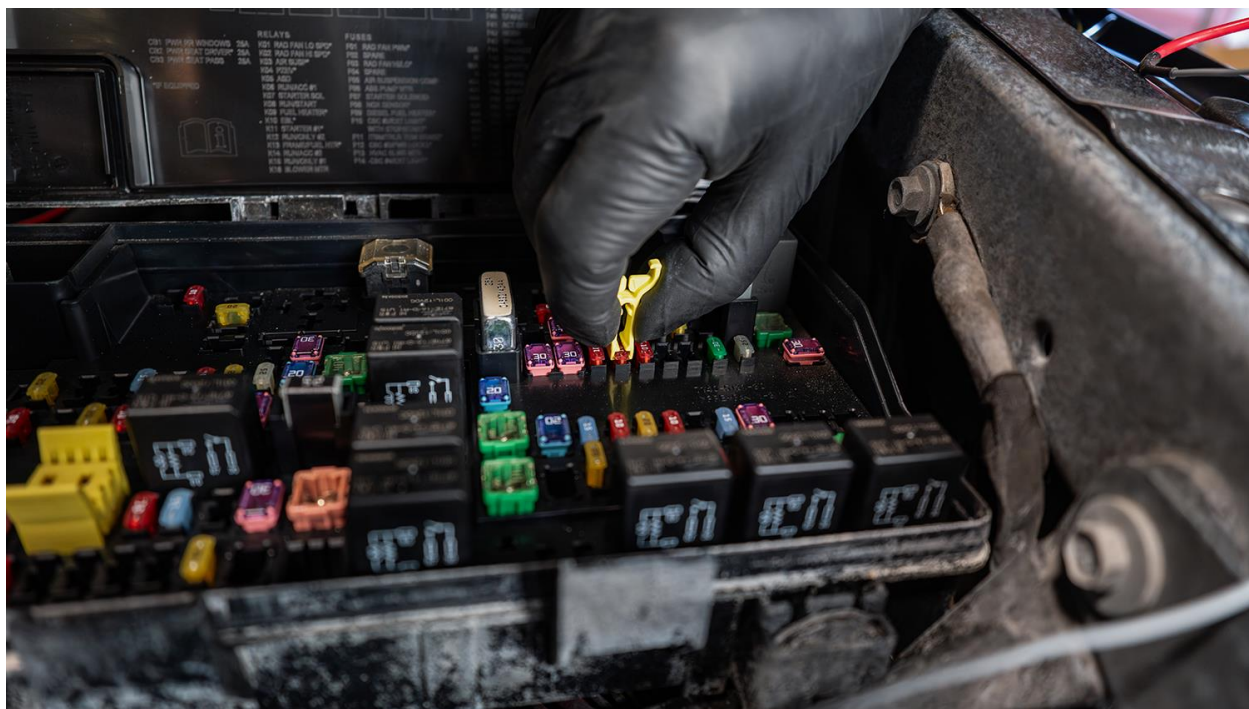
Start by grabbing your DRL harness and unraveling it. The first two connections you'll need to make are for power—connect the red wire to the positive battery terminal and the black wire to the negative terminal. Note: The battery location may vary depending on your engine configuration.



Next, move on to installing the fuse tap. The correct fuse slot will vary depending on your vehicle's year:

- For 2013 and newer models, install the fuse tap into fuse slot F66.
- For 2009–2012 models, use fuse slot M19 or M16.

Remove the fuse from the recommended fuse slot, then insert it into the second slot on the fuse tap. The fuse tap must contain two fuses—one in each slot. Once both fuses are in place, insert the fuse tap back into the original fuse location securely.





Now move on to the bullet connectors on the red wires:

- The bullet connectors will be routed to each headlight and connected to the matching red wires on the headlight harness.
- The single black plug with the yellow grommet will connect to the corresponding plug on the headlight closest to the battery and fuse box (will only go to one light).



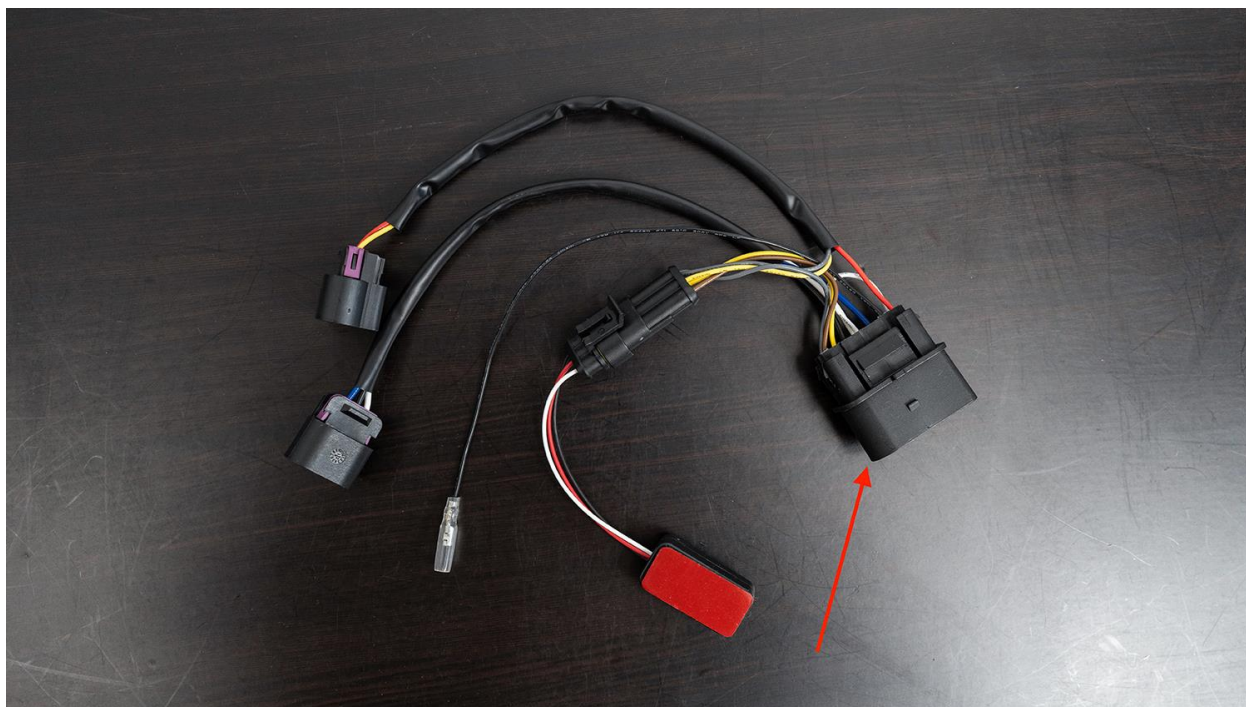


With that the DRL harness should be ready to go.

Factory Projector Adapter Harness Installation:

If your vehicle is equipped with factory projector headlights, you will need to install the included adapter harness for proper compatibility.

Connect the adapter harness to this factory plug.



Then, plug the other end of the adapter harness into the main connector on the back of your new AlphaRex headlight.

Wire Reference Guide:

Blue, White, and Black wires: Control the low and high beam functions. Yellow, Brown, and Black wires: Control the turn signal functions.



Note: The single black wire on the harness will not be used.

Make sure all connections are properly seated and aligned to ensure full functionality.

Note: This adapter is only necessary for vehicles originally equipped with factory projector headlights.

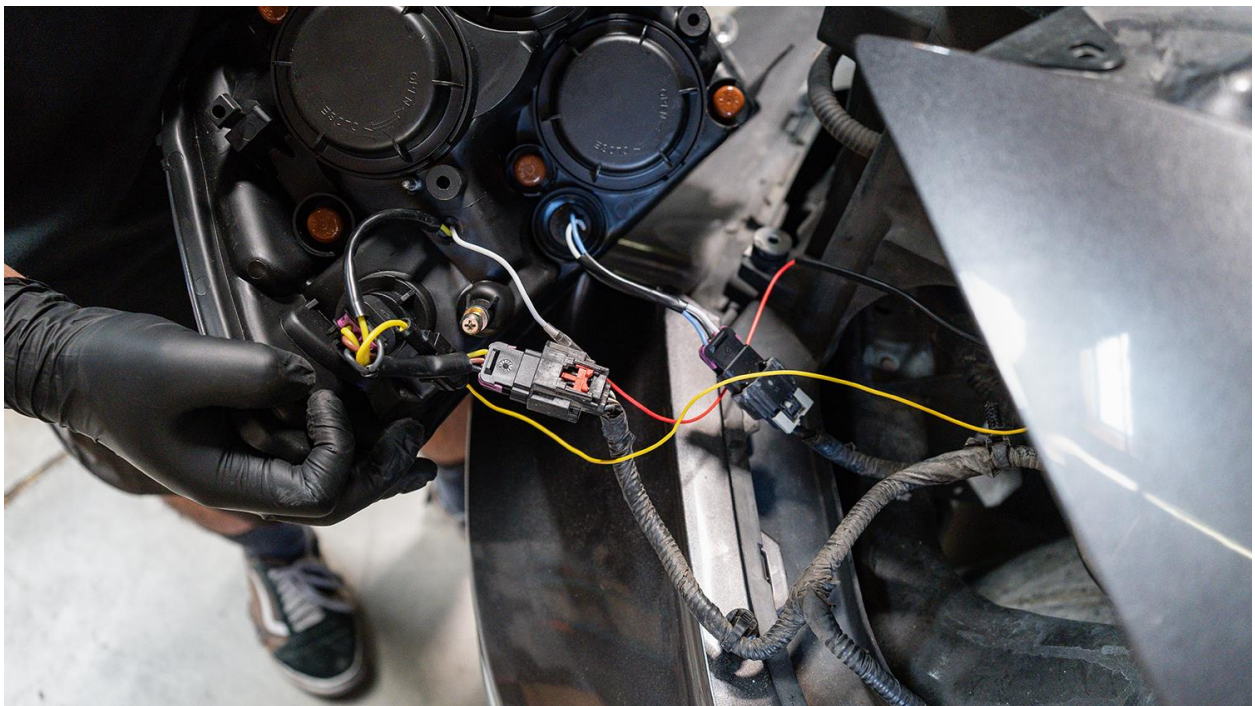
Continue stock reflector Install:

If none of the previous steps apply to your setup, you can proceed with the standard installation.

-There will be two main plugs that connect to the headlight:

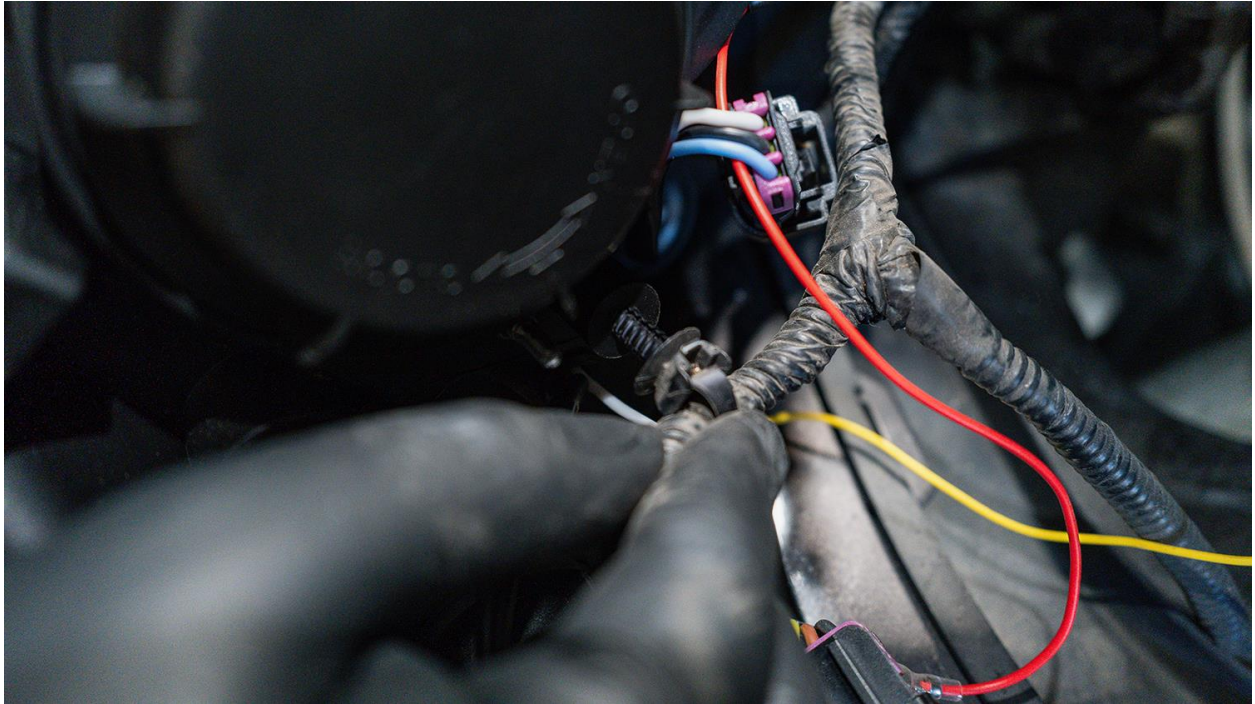
- The smaller plug connects to the low/high beam input.
- The larger plug connects to the turn signal input.

Match each plug to its corresponding socket on the back of the AlphaRex headlight and ensure they are fully seated and locked into place.



Once both plugs are connected, don't forget to reinstall the wire clips onto the back of the headlight. These clips help secure the wiring in place and prevent any movement or strain on the

connectors.

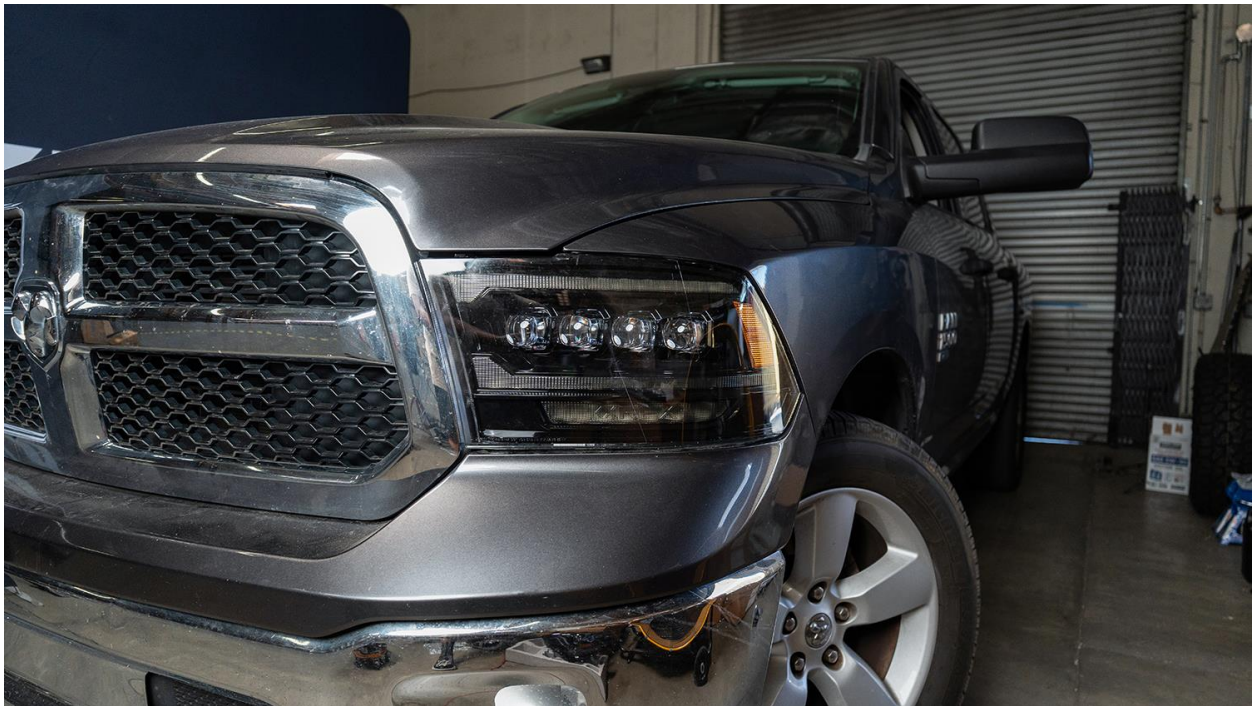


Now you can reinstall the headlight by reversing the uninstallation process.

Start by aligning the headlight into position. Secure it using the two 10mm bolts at the front. Then, reach behind the headlight and lock the rear clip into place to ensure a secure fit.



From this point forward, simply reinstall all components that were previously removed, including. Once everything is reassembled, give all connections a final check—and you're done!



How to adjust the headlight:

Once the headlight is installed, you can easily adjust the beam height to your preference. Using a Phillips head screwdriver (T2), locate the adjustment opening marked with an arrow near the edge of the engine bay.

Turn clockwise to raise the beam. Turn counterclockwise to lower the beam.



End of installation guide