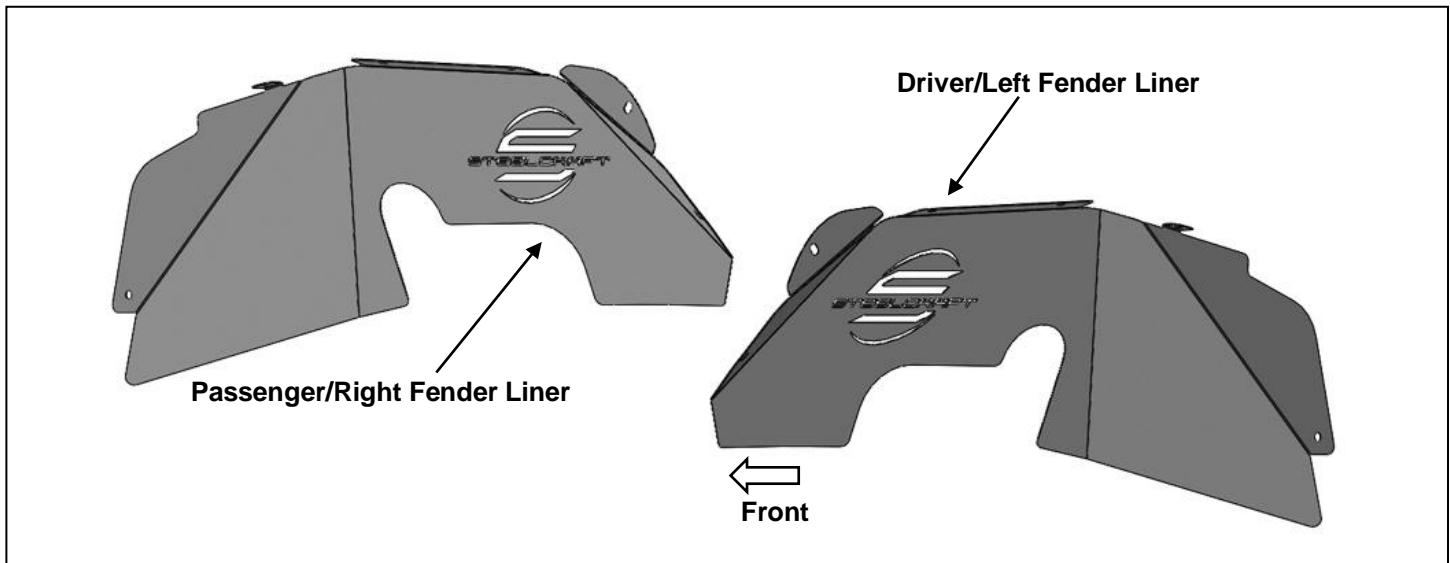


**ALUMINUM FRONT FENDER LINERS  
2007-18 JEEP WRANGLER JK 2 AND 4-DOOR**

**PARTS LIST:**

1	Driver/Left Front Fender Liner	12	6mm Lock Washers
1	Passenger/Right Front Fender Liner	12	6mm x 18mm OD x 1.6mm Flat Washers
2	L-Brackets	2	6mm Clip Nuts
12	6-1.0mm x 20mm Hex Bolts	2	6mm Flange Nuts



**PROCEDURE:**

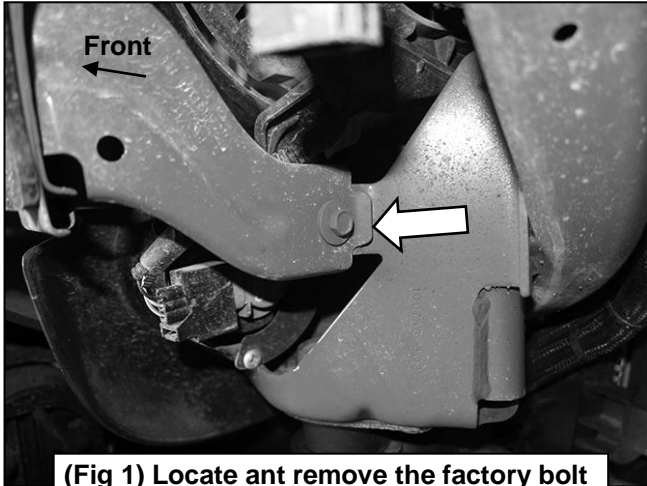
**REMOVE CONTENTS FROM BOX. VERIFY ALL PARTS ARE PRESENT. READ INSTRUCTIONS CAREFULLY. ASSISTANCE IS RECOMMENDED.**

1. Start installation on the Driver/Left side of the vehicle. Locate the factory bolt in the front of the wheel well, **(Figure 1)**. Temporarily remove the factory bolt. Select (1) L-Bracket. Reuse the factory bolt to attach the Bracket to the front of the wheel well, **(Figures 1 & 2)**.
2. Select (1) 6mm Clip Nut. Attach the Clip Nut to the front upper hole in the body panel, **(Figure 3)**. **NOTE:** The threaded hole on the Clip Nut will need to face towards the vehicle.
3. Next, locate the (2) threaded holes in the upper wheel well, **(Figure 4)**. Select the Driver/Left Fender Liner. Attach the Liner to the L-Bracket with (1) 6mm Hex Bolt, (1) 6mm Lock Washer and (1) 6mm Flat Washer, **(Figure 5)**. Do not tighten hardware.
4. Attach the Liner to the Clip Nut with (1) 6mm Hex Bolt, (1) 6mm Lock Washer and (1) 6mm Flat Washer, **(Figure 6)**. Do not tighten hardware.
5. Attach the Liner to the (2) threaded holes on the top of the wheel well with (2) 6mm Hex Bolts, (2) 6mm Lock Washers and (2) 6mm Flat Washers, **(Figure 7)**. Do not tighten hardware.
6. Attach the Liner to the top threaded hole in the rear of the wheel well with (1) 6mm Hex Bolt, (1) 6mm Lock Washer and (1) 6mm Flat Washer, **(Figure 8)**. Do not tighten hardware.
7. Locate the lower rear hole in the Liner and mark the body panel for drilling, **(Figure 9)**. Temporarily remove the Fender Liner. Using a 1/4inch drill bit, (not included), drill the marked location. Select one 6mm bolt and insert into the drilled hole to ensure fit.
8. Reattach the Fender Liner and attach the lower rear hole to the drilled hole in the wheel well with (1) 6mm Hex Bolt, (1) 6mm Lock Washer, (1) 6mm Flat Washer and (1) 6mm Flange Nut, **(Figure 8)**. Do not fully tighten hardware.
9. Level and adjust Fender Liner and tighten at hardware.
10. Repeat **Steps 1—9** to attach the Passenger/Right Fender Liner.
11. Do periodic inspections to the installation to make sure that all hardware is secure and tight.

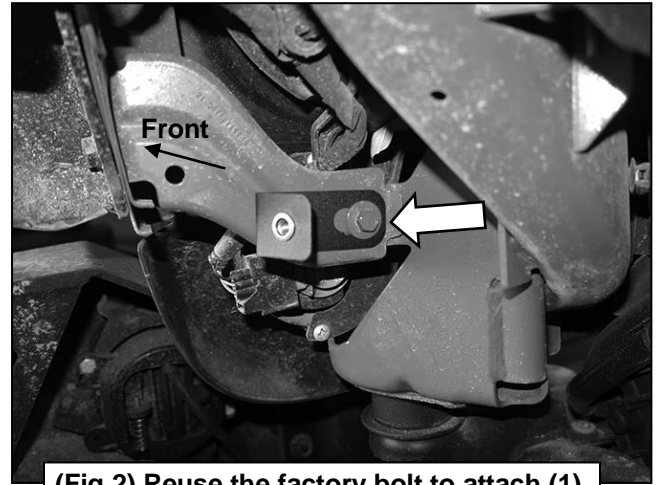
**To protect your investment,** Do not use any type of polish or wax that may contain abrasives that could damage the finish. Mild soap may be used to clean the Fender Liners.

ALUMINUM FRONT FENDER LINERS  
2007-18 JEEP WRANGLER JK 2 AND 4-DOOR

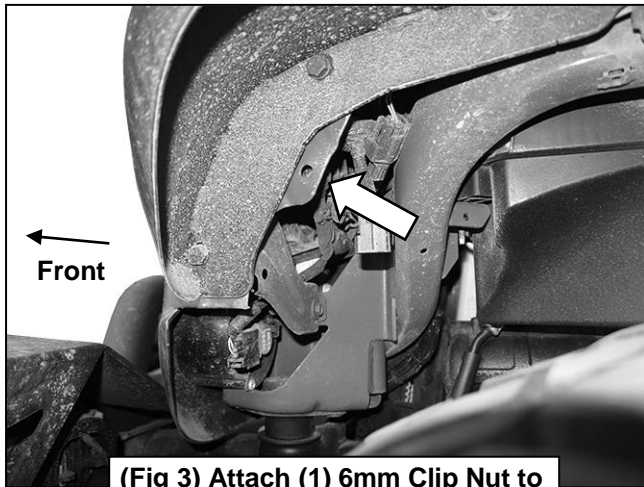
Driver/Left Side Installation Pictured



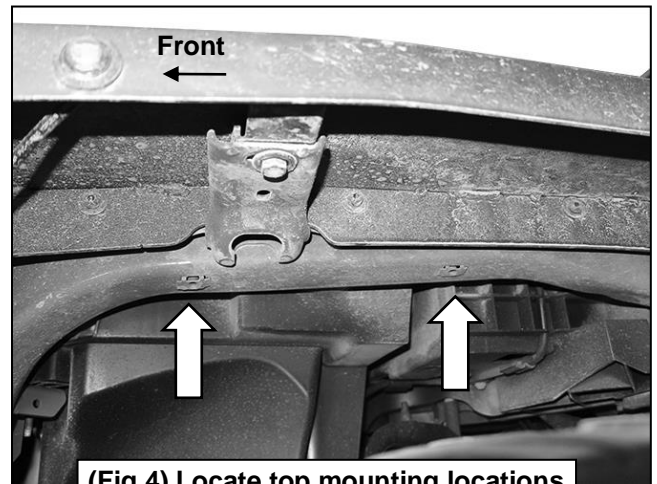
(Fig 1) Locate and remove the factory bolt in Driver/Left front wheel well (arrow)



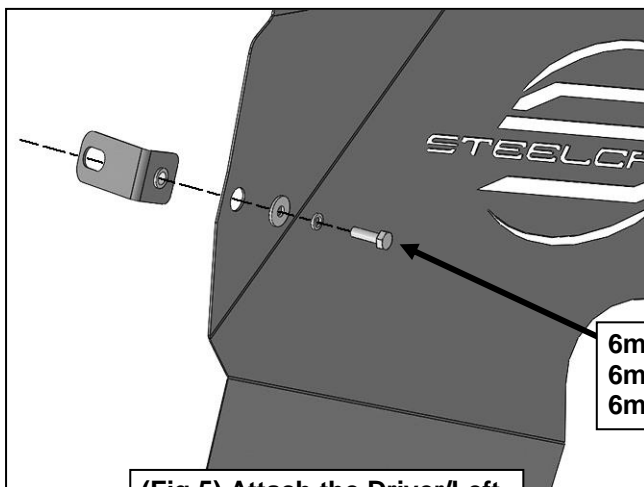
(Fig 2) Reuse the factory bolt to attach (1) L-Bracket to the front of the wheel well



(Fig 3) Attach (1) 6mm Clip Nut to the hole in the body panel (arrow)



(Fig 4) Locate top mounting locations on the top of the wheel well (arrows)

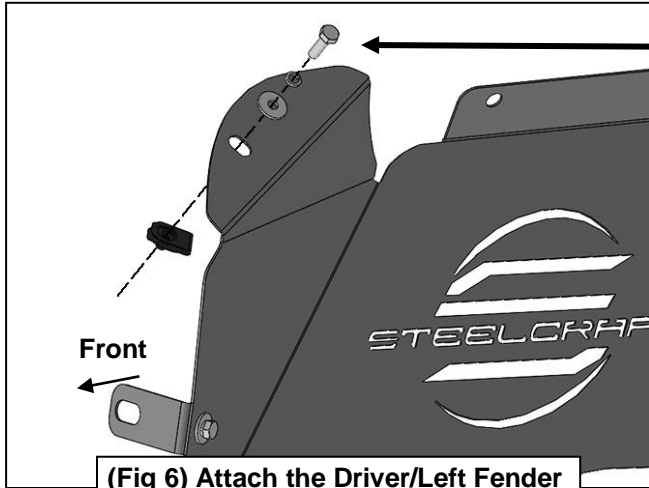


- 6mm Hex Bolt
- 6mm Lock Washer
- 6mm Flat Washer

(Fig 5) Attach the Driver/Left Fender Liner to the L-

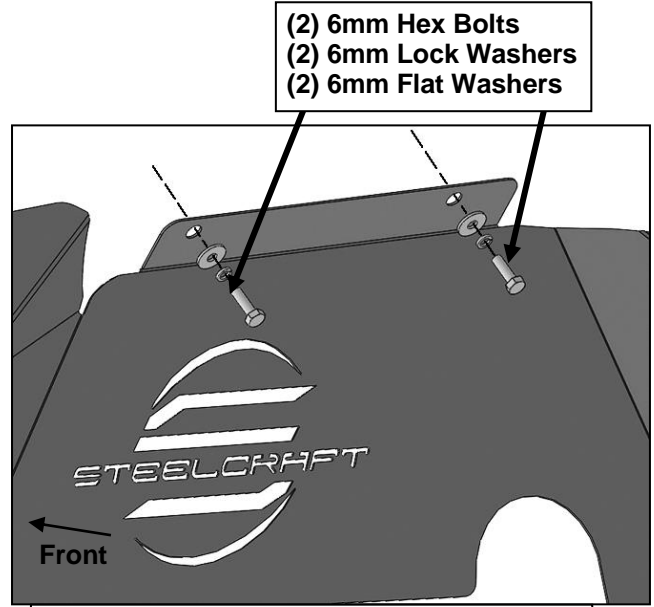
ALUMINUM FRONT FENDER LINERS  
2007-18 JEEP WRANGLER JK 2 AND 4-DOOR

Driver/Left Side Installation Pictured



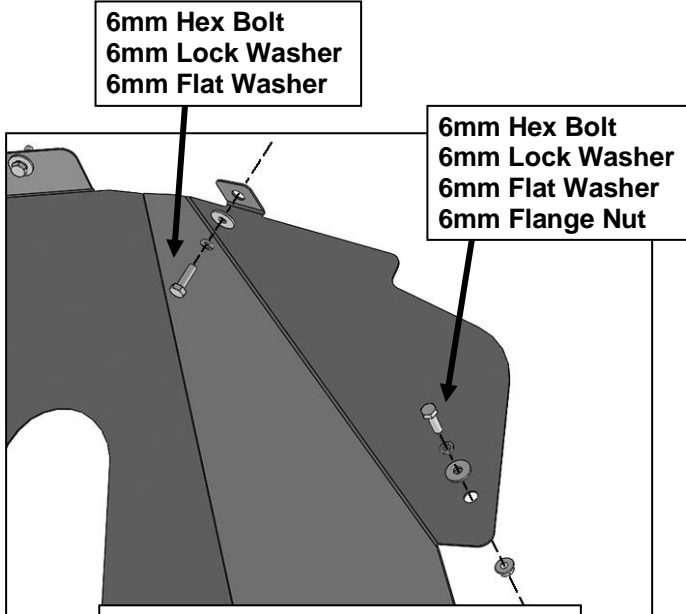
6mm Hex Bolt  
6mm Lock Washer  
6mm Flat Washer

(Fig 6) Attach the Driver/Left Fender Liner to the front 6mm Clip Nut



(2) 6mm Hex Bolts  
(2) 6mm Lock Washers  
(2) 6mm Flat Washers

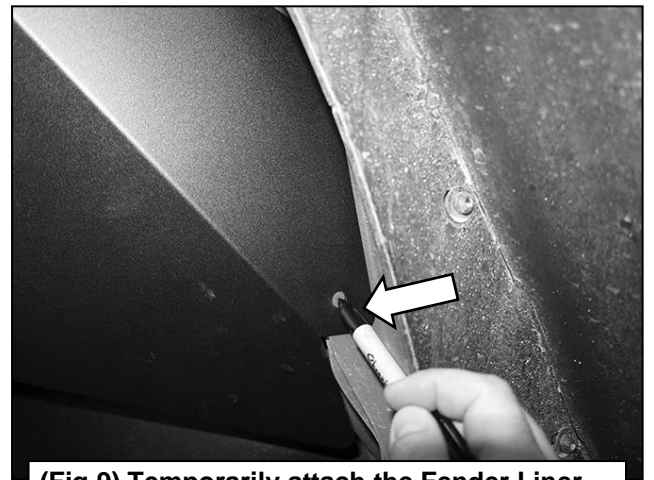
(Fig 7) Attach top of Fender Liner to the threaded holes in the top of the wheel well



6mm Hex Bolt  
6mm Lock Washer  
6mm Flat Washer

6mm Hex Bolt  
6mm Lock Washer  
6mm Flat Washer  
6mm Flange Nut

(Fig 8) Attach the Driver/Left Fender Liner to the rear of the wheel well



(Fig 9) Temporarily attach the Fender Liner and mark the location of the rear hole, NOTE: Use a 1/4 inch drill bit, not included, to drill a hole for the lower rear mounting location