

ADDICTIVE DESERT DESIGNS

2017 – Current Ford Raptor ADD Pro Rear Bumper Installation Instructions

PREPARATION

1. Disconnect the negative terminal on the battery. Park the vehicle on level ground and set the emergency brake.
2. We recommend reading through the installation instructions in whole before performing the work.
3. Estimated Installation Time: **2 Hours**
4. You will need the following tools:
 - a. Ratchet
 - b. 10mm Socket
 - c. 15mm Socket
 - d. 21mm Socket
 - e. Tape Measure
 - f. Cutting Wheel
 - g. Grinder
 - h. 3/4" Socket & Wrench
5. Included in Kit:
 - 4** – Hex Head Bolts – 1/2"-13 x 1 1/2"
 - 10** – Flat Washers – 1/2"
 - 5** – Nylon Lock Nut – 1/2"-13
 - 1** – Hex Head Bolt – 1/2"-13 x 3"

Note: this installation requires 2 people for best results

REMOVAL

1. Unplug the trailer plug connector from the back side of the trailer plug.
2. Remove your license plate lights from their housing.
3. Remove the parking sensors (x4) from their outer mounting rings. Simply spread the two tabs on the back of the mounting ring to allow the sensors to push out the back of the ring. Leave the mounting rings in the bumper for now. (Fig A)



4. Disconnect the christmas-tree plastic clips (x12) that hold the parking sensor harness to the trailer hitch tube and the rear bumper. You will have to get underneath the truck to reach these clips. (Fig B)



Fig B

5. Using a 10mm Socket, remove the rear exhaust hanger bolts (x4). (Fig C)

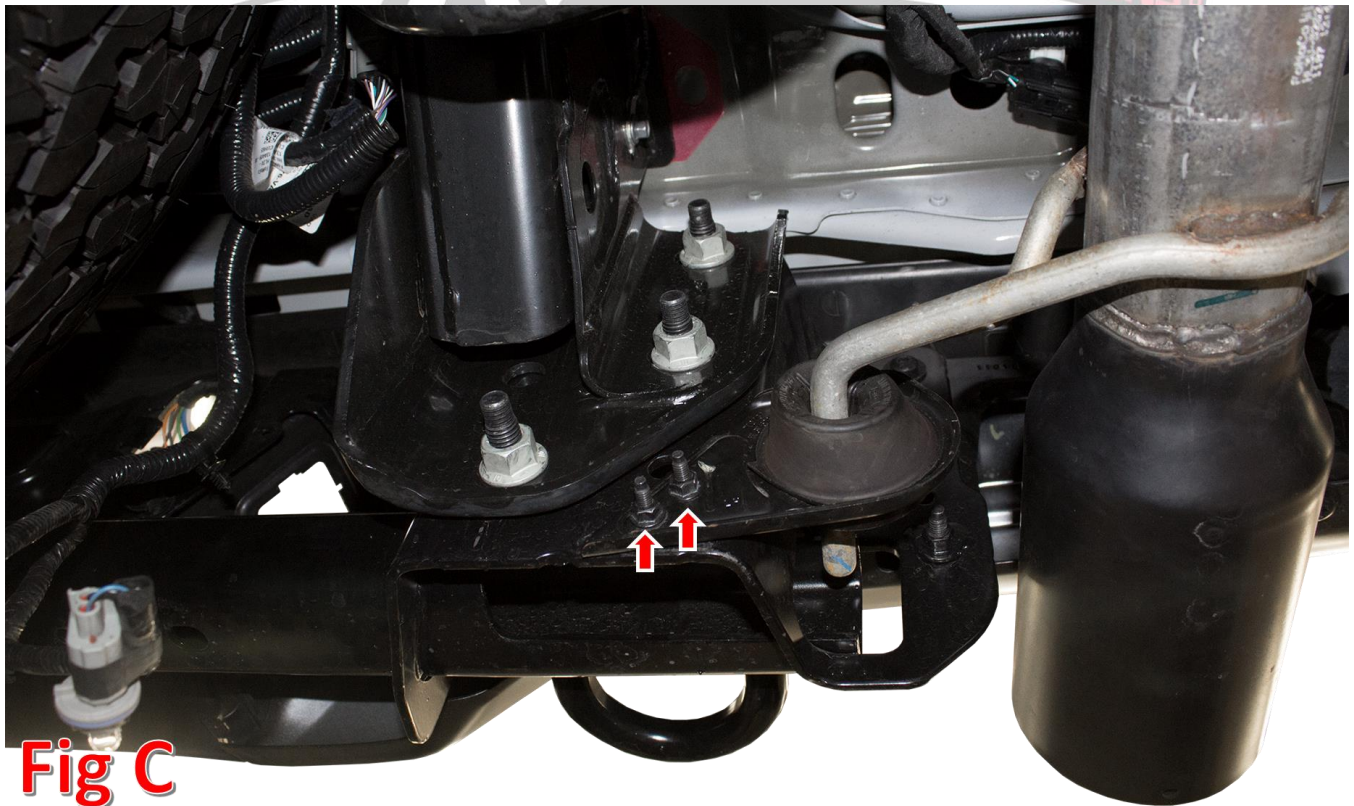
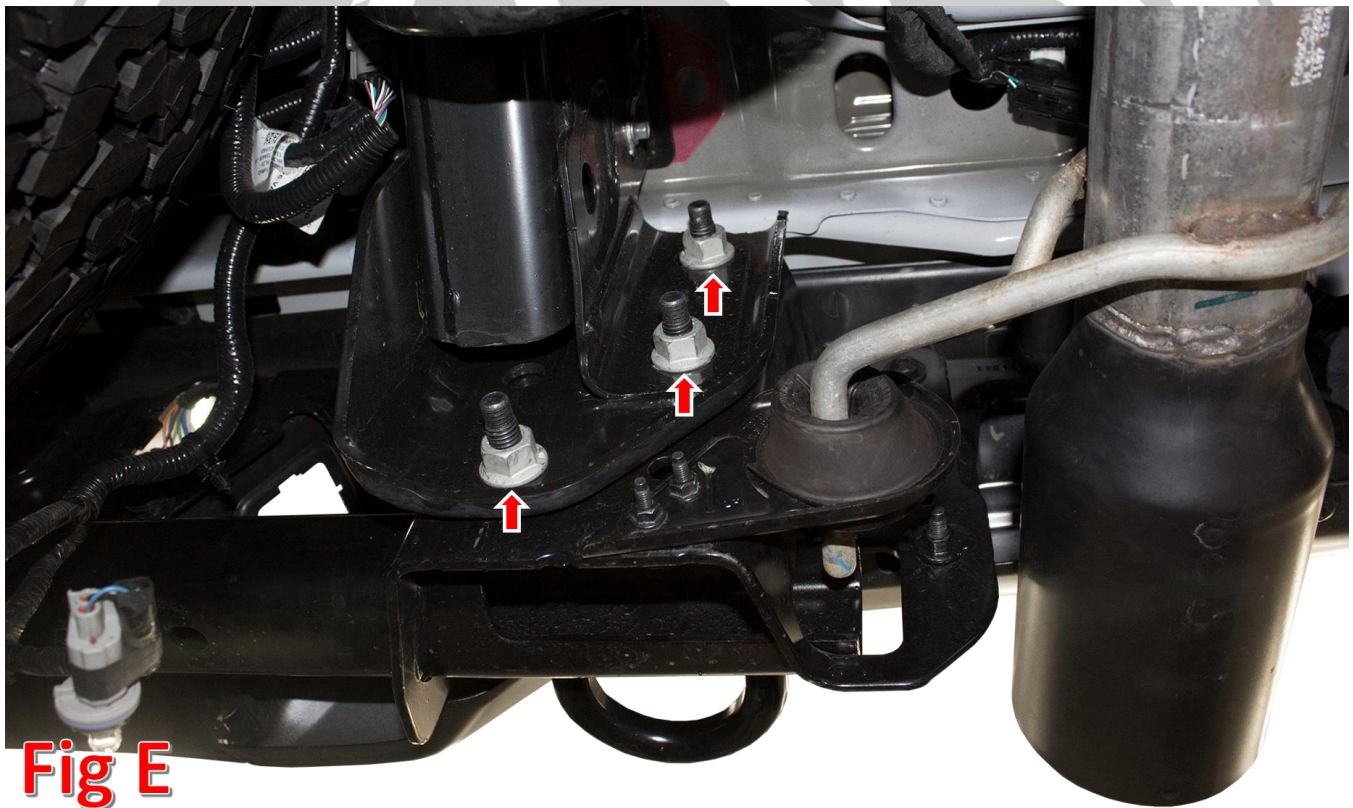


Fig C

6. Using a 15mm Socket, remove the spare tire strap bolt. (Fig D)



7. Using a 21mm Socket, remove the trailer hitch bolts (x6). Then, remove the trailer hitch/rear bumper assembly from the vehicle. (Fig E)

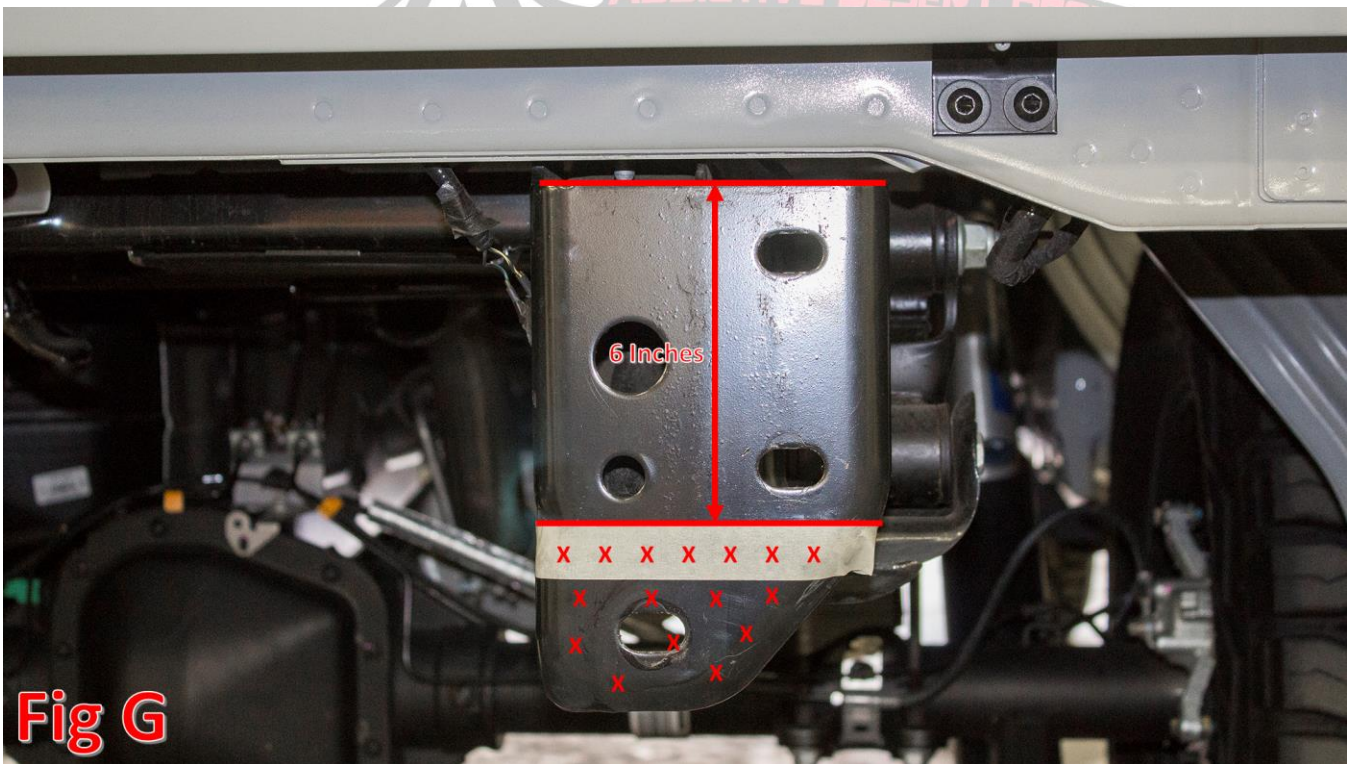


8. Remove the parking sensor outer mounting rings from your OEM bumper. Do this by pressing in the two tabs on the back of the ring and pushing them out the front of the bumper.

9. Remove the license plate light housings from your OEM bumper. Do this by pressing in the two tabs on the back of the housings and pushing them out the front of the bumper.
10. Remove your spare tire using the OEM spare tire tools. Then, remove the white plastic cone that sits above your spare tire. This cone simply pulls off by hand. (Fig F)



11. Measure 6 inches down from the top of the hitch mounts. Mark a horizontal line across the hitch mounts. (Fig G)



12. Using a cutoff wheel or similar tool, cut off the bottom portion of your hitch mounts. (Fig H)

Fig H



13. Grind the bottom 1.5 inches of the outer/back portion of your hitch mounts smooth. Refer to Fig I.



Fig I

14. Prepare to install your new ADD Rear Bumper.

INSTALLATION

1. Using the supplied 1/2" x 3" Bolt (x1), 1/2" Washers (x2), and 1/2" Lock Nut (x1), bolt your spare tire strap to the location shown in Fig J.

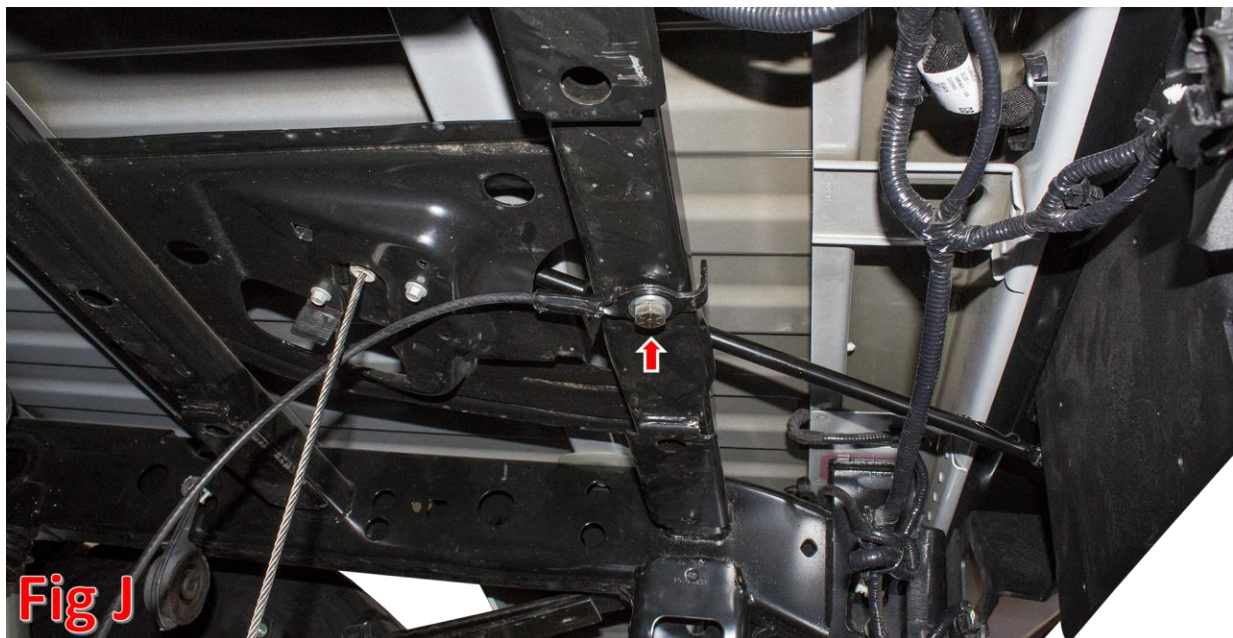


Fig J

2. Install the parking sensor outer mounting rings on your new bumper by pressing them into their precut holes. If the rings do not click into place, you may have to trim the tabs on the side of the rings. Refer to Fig K for trimming information.

Trim Here



Fig K

3. Install the license plate light housings on your new bumper by pressing them into their precut holes.
4. Hold your new bumper in place. Then, secure it to the vehicle using the supplied 1/2" x 1 1/2" Bolts (x4), 1/2" Washers (x8), and 1/2" Lock Nuts (x4). Install the upper mounting bolts with the head facing towards the front of the vehicle. Leave these bolts loose for now. (Fig L)

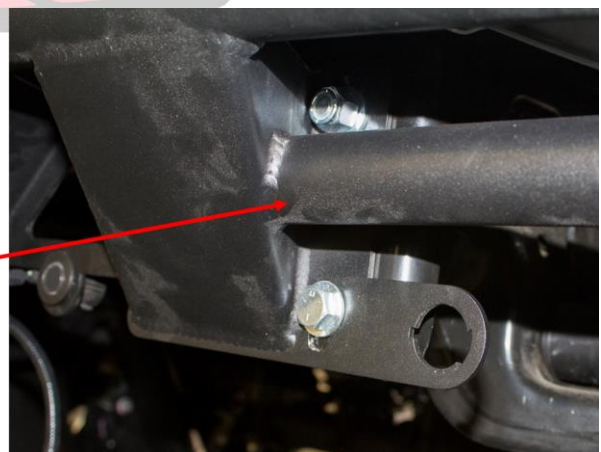
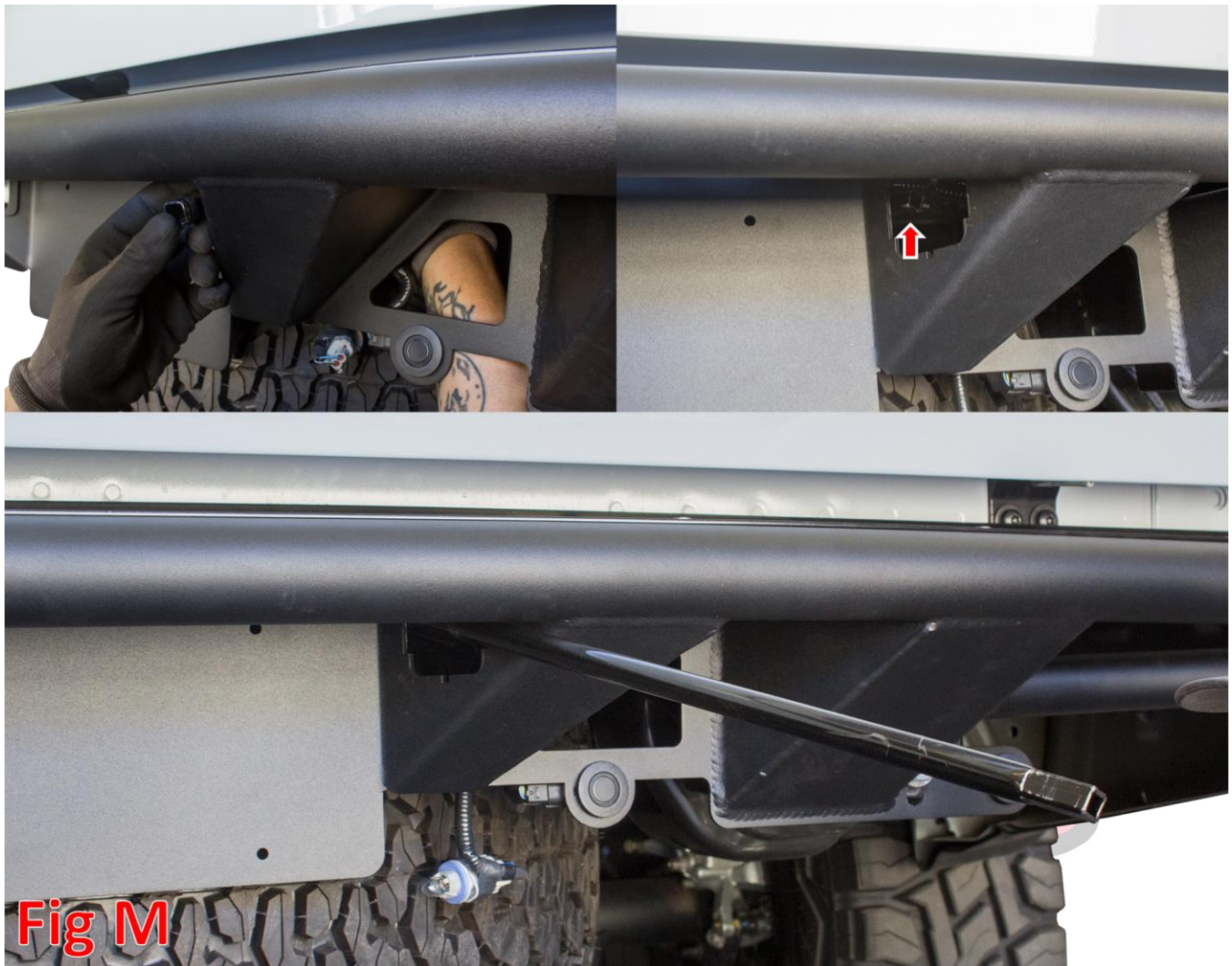


Fig L

5. Center your bumper left to right, then align the bumper so it is straight in relation to your tailgate. Also make sure your tailgate does not hit your bumper when you open it. If it does, move your bumper down. Once your bumper is fully aligned, tighten the mounting bolts to 70 foot pounds.
6. Push the parking sensors into their mounting rings from the back side. Then, zip-tie the parking sensor harness up and out of the way.
7. Install the license plate lights into their housings.

8. If you would like to remount your spare tire, use the OEM spare tire tool. Remove the passenger side license plate light housing from your bumper and stick the tool through that hole. Reach up from the bottom of the truck with your other hand to guide the tool onto the spare tire mounting mechanism. (Fig M)



9. Stand back and enjoy your new ADD Pro Rear Bumper.
10. Check and re-tighten if needed, all mounting bolts after 100 miles and periodically thereafter.



For Additional Support or Technical Questions,
Please Call 480.671.0820 or
Email info@addictivedesertdesigns.com