



# Installation Instructions

For Part Numbers:

400-336 720-243 Airaid Oiled Media Filter

401-336 721-243 SynthaMax Dry Media Filter - Red

2017-18 FORD F150 / Raptor

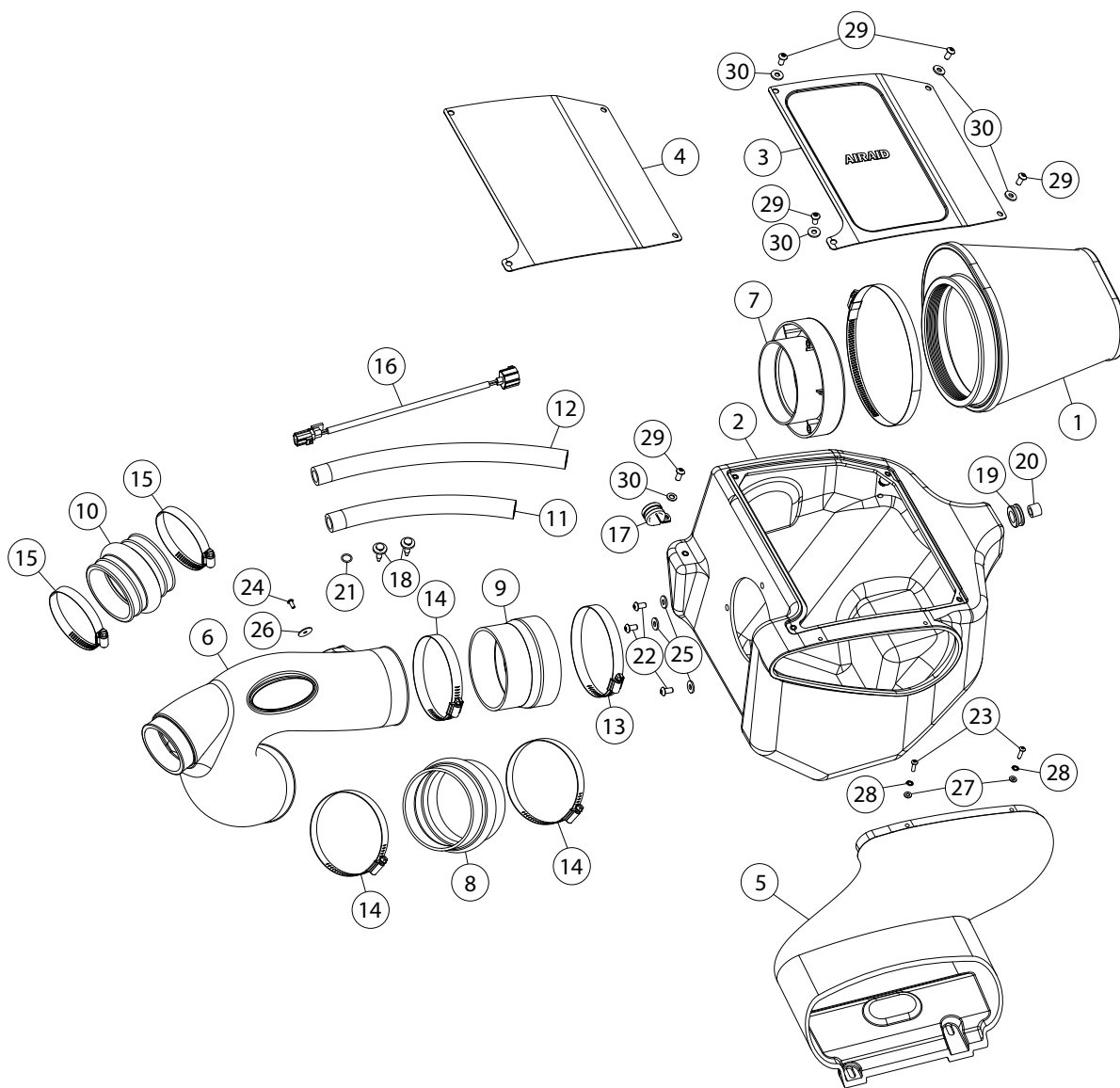
2018 FORD Expedition

2018 LINCOLN Navigator

V6-3.5L EcoBoost

**NOT LEGAL FOR SALE OR USE ON ANY POLLUTION CONTROLLED MOTOR VEHICLE IN CALIFORNIA OR STATES ADOPTING CALIFORNIA EMISSION PROCEDURES.**

See Airaid.com for CARB status on each part for a specific vehicle



## Component Identification

1	FILTER	1	720-243/721-243
2	AIR BOX	1	KIT336CABA
3	AIR BOX LID	1	KIT336LID
4	GASKET	1	KIT336G
5	INLET	1	KIT336INLET
6	INTAKE TUBE	1	KIT338
7	ADAPTER; MAF PLASTIC 112-1	1	KIT1121MAFADA
8	HUMP HOSE; 4"ID X 3"L	1	KITHUMPHS22
9	REDUCER; 4.325"ID X 4" X 3"L	1	KITRDCR30
10	HUMP HOSE; 3"ID X 3"L	1	KITHUMPHS06EPDM
11	HOSE; 5/8"ID X 9.75"L	1	084047
12	HOSE; 5/8"ID X 13"L	1	08602
13	CLAMP; #72 SS 9/16"	1	KITHS72
14	CLAMP; #64 SS 9/16"	3	KITHS64
15	HOSE CLAMP; #48	2	08601
16	EXTENSION HARNESS; DODGE	1	21680
17	CLAMP; 3/4" RUBBER-CUSHION	1	077014
18	CLIP; RETAINER BODY NYLON	2	KITRETCLIP02
19	GROMMET; 5/8" BLACK RUBBER	1	KITGRMT20
20	SPACER; 382"ID X 5/8"OD X 1/2"L	1	KITSPACER09
21	O-RING; #013 (326)	1	KITORING013
22	SCREW; BUTTON HEAD SOCKET	3	KIT15DHC3050
23	SCREW; BUTTON HEAD SOCKET	2	KIT15BHC3063
24	SCREW; BUTTON HEAD SOCKET	1	KIT15BHC3038
25	WASHER; 1/4"ID X 5/8"OD - SAE	3	08275
26	WASHER; FLAT #8 X 3/4"OD	1	KITWASH02
27	WASHER; FLAT #8 304SS	2	KIT15FW3016
28	WASHER; LOCK SPLIT #8 304SS	2	KIT15LW3016
29	BOLT; M6 BHA	5	07794
30	WASHER; M6 FLAT	5	08269

Full color instructions can be viewed on our web site at [Airaid.com](http://Airaid.com).

If you need any assistance please call 1-800-498-6951 to speak with a representative in our Customer Service Center before returning the product.

### TO START:

1. Turn off the ignition and disconnect the negative battery cable.

**NOTE:** Disconnecting the negative battery cable erases pre-programmed electronic memories. Write down all memory settings before disconnecting the negative battery cable. Some radios will require an anti-theft code to be entered after the battery is reconnected. The anti-theft code is typically supplied with your owner's manual. In the event your vehicles anti-theft code cannot be recovered, contact an authorized dealership to obtain your vehicles anti-theft code.



2. Disconnect the inlet air temperature sensor electrical connection.



3. Loosen the three hose clamps that secure the factory intake tube and then remove the intake tube from the vehicle.

**NOTE:** AIRAID recommends that customers do not discard factory air intake.



4. Remove the two retaining clips that secure the factory fresh air intake to the core support.



5. Remove the bolt which secures the factory air filter housing to the inner fender. Remove the factory air filter housing and fresh air intake from the vehicle.



6. Install the filter adapter into the AIRAID filter housing and secure with the provided 1/4" hardware.

## Continued...



7. Install the provided grommet and support into the AIRAID air filter housing as shown.



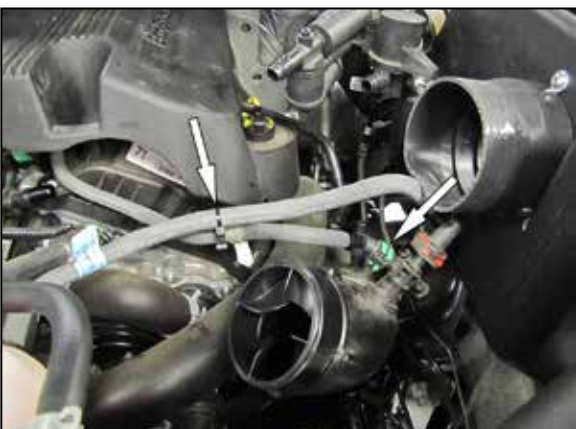
8. Install the AIRAID fresh air intake into the AIRAID air filter housing and secure with the provided hardware.



9. Install the AIRAID air filter assembly into the vehicle and secure it to the inner fender and core support with the hardware and retaining clips provided.



10. Remove the two crank case vent hoses from the solenoid valves and turbo inlet tubes and set aside. Using the provided clamp and M6 hardware, secure the solenoid pack to the AIRAID air filter housing. Rotate the brake booster hose where it attaches to the solenoid pack so the it lines up with the brake booster and does not cause a bind.



11. Disconnect the green EVAP connector and unhook the line from the retaining clip.



12. Route the line in front of the red EVAP line and reconnect to the fitting. Resecure the line retaining clip.



13. Cut the provided hose into two sections, one will be 8" long and the other will be 12-1/2" long.



14. Remove the fittings from the factory crank case vent hoses in step #10 and install them into the 8" and 12-1/2" long hoses as shown.



15. Install the modified crank hoses onto the solenoid valves and turbo intake tubes.



16. Install the coupler hose onto the filter adapter and secure with the provided hose clamp.



17. Install the two remaining coupler hoses onto the turbo inlet tubes and secure with the provided hose clamps.



18. Remove the inlet air temperature sensor from the factory air filter housing and then remove the factory O-ring. Install the provided O-ring onto the inlet air temperature sensor.



19. Install the inlet air temperature sensor into the AIRAID intake tube and then secure with the provided hardware.



20. Install the AIRAID logo onto the intake tube.



21. Install the intake tube into the turbo hose couplers and the coupler at the filter adapter. Adjust the tube for best fit and secure with the provided hose clamps.



22. Using the provided extension harness, reconnect the inlet air temperature sensor.



23. Install the AIRAID air filter onto the adapter and secure with the provided hose clamp.

## Continued...



24. Install the provided gasket onto the air filter housing lid.



25. Install the air filter housing lid and secure with the provided M6 hardware.



**26. Double check your work!**

Make sure there is no foreign material in the intake path. Make sure all clamps, hoses, bolts, and screws are tight. Double check the hood clearance!

**Reconnect the negative battery cable!**

Thank you for purchasing the Airaid Intake System. Contact Airaid @ (800) 498-6951 8:00 AM - 5:00 PM MST weekdays for questions regarding fit or instructions that are not clear to you. Your Airaid Intake System was carefully inspected and packaged. Check that no parts are missing, or were damaged during shipping. If any parts are missing, contact Airaid. The air filter element is protected from direct exposure to water and debris; care should be taken not to drive through deep water.

**WATER INGESTION IS THE DRIVERS RESPONSIBILITY!** The air filter is reusable and should be cleaned periodically.

### FILTER IDENTIFICATION

720-243 Airaid Oiled Media

721-243 Airaid SynthaMax Dry Media - Red

For your Oiled media filter we offer the  
Airaid Tune Up Kit!



P/N 790-551 Aerosol Spray  
P/N 790-550 Squeeze Spray



**NOT LEGAL FOR SALE OR USE ON ANY POLLUTION CONTROLLED MOTOR VEHICLE IN CALIFORNIA OR STATES ADOPTING CALIFORNIA EMISSION PROCEDURES.**

See [Airaid.com](http://Airaid.com) for CARB status on each part for a specific vehicle

*SynthaMax*

Synthamax Air Filters **do not** require oil. Service air filter as needed by cleaning with common non-petroleum all-purpose household cleaner and water. Simple Green®, Formula 409® or equivalent works great. Apply cleaner to outside of air filter and allow to soak. Then flush filter clean from the inside out with a garden hose and repeat steps if necessary. Do not apply high pressure water or air to clean filter. Allow filter to air dry and reinstall.