

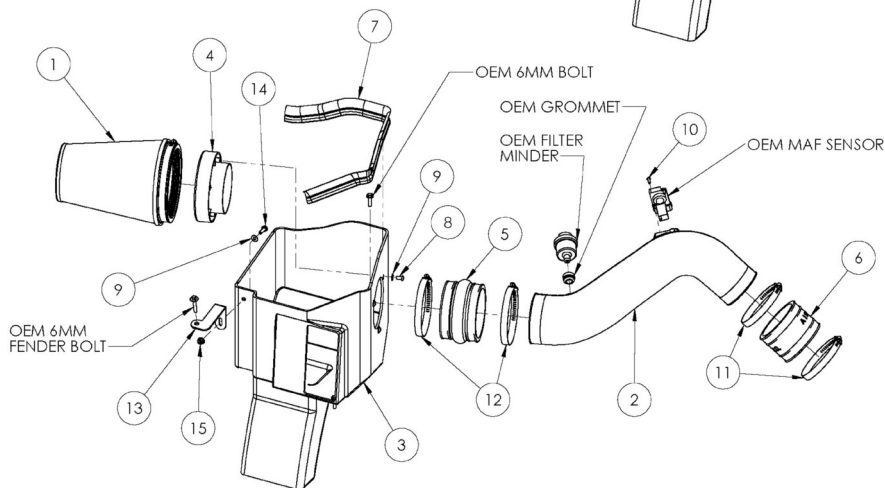
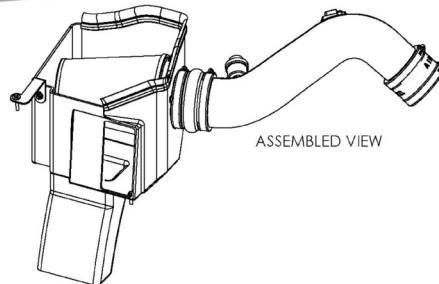


Installation Instructions

For Part Numbers:

200-266	700-469 Airaid Oiled Media Filter
201-266	701-469 SynthaMax Dry Media Filter - Red
202-266	702-469 SynthaMax Dry Media Filter - Black

2001-04 Chevrolet Silverado 2500HD/3500HD
 2001-04 GMC Sierra 2500HD/3500HD
 6.6L V8 Duramax Diesel LB7
 Will NOT Fit the 2004 LLY Engine



Full color instructions can be viewed on our web site at Airaid.com.

Component Identification

1.	Airaid Premium Filter	1
2.	Airaid Intake Tube	1
3.	Cold Air Box	1
4.	Filter Adapter	1
5.	Urethane Hump Hose	1
6.	Urethane Coupler	1
7.	Weather Strip 25"	1
8.	1/4-20 x 1/2" Button Head	3
9.	1/4" Flat Washer	4
10.	8-32 x 1/2" Button Head	2
11.	#60 Hose Clamp	2
12.	#72 Hose Clamp	2
13.	Fender Bracket	1
14.	1/4-20 x 3/4" Hex Bolt	1
15.	1/4-20 Flange Nut	1
16.	T-20 Torx Bit	1
17.	Airaid Decal	1



1. Disconnect the negative battery cable.

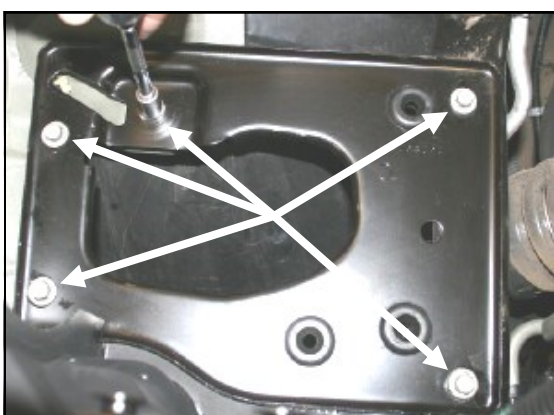
A.) Disconnect the Mass Air Flow (M.A.F.) sensor wiring harness. Using the supplied T-20 Security bit, remove the two screws and the M.A.F. sensor from the tube (save the sensor for reuse).
 B.) Loosen the hose clamps on each end of the factory intake tube assembly.



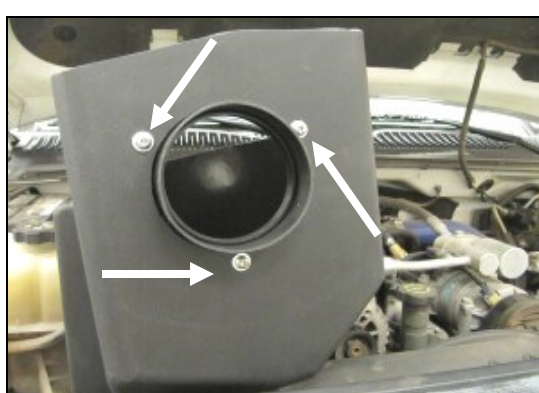
2. Remove the factory filter minder and grommet from the side of the factory airbox (save for reuse).



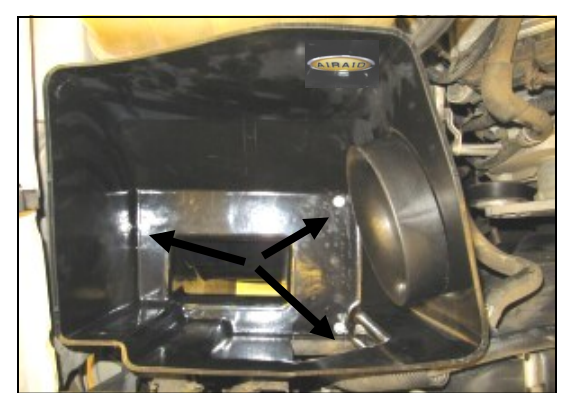
3. Remove the factory intake tube assembly from the engine. Rock the factory air box back and forth and remove it from its mounting. There are only grommets holding it in, no bolts.



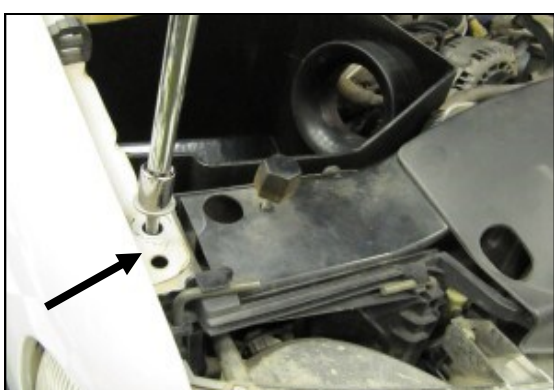
4. Using a 10mm socket, remove the five bolts and mounting plate from the engine compartment and set aside. Three of these bolts will be re-used in step 6.



5. Install the Filter Adapter (#4) onto the Cold Air Box, or CAB (#3), as shown using the three 1/4-20 Button Head Bolts (#8) and 1/4" Washers (#9).



6. Install the Airaid CAB into the vehicle replacing the factory airbox. Secure the CAB using Three of the factory bolts from step 4. Do not over tighten Apply the Airaid Bubble Decal inside the Airbox as shown.



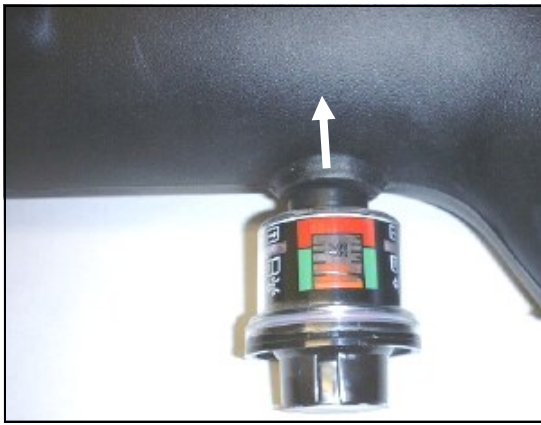
7. Using a 13mm socket, remove the factory fender bolt and set it aside. It will be reused in step 8.



8. Install the Fender bracket (#13) as shown. A.) Secure the bracket to the fender using the factory bolt. B.) Use the 1/4-20 x 3/4" hex bolt (#14), one 1/4" flat washer (#9), and the 1/4-20 flange nut (#15) to secure the CAB to the Bracket.



9. Using two 8-32 x 1/2" button head screws (#10) install the factory M.A.F. sensor in the Airaid intake tube (#2) **DO NOT USE THE FACTORY SCREWS!**



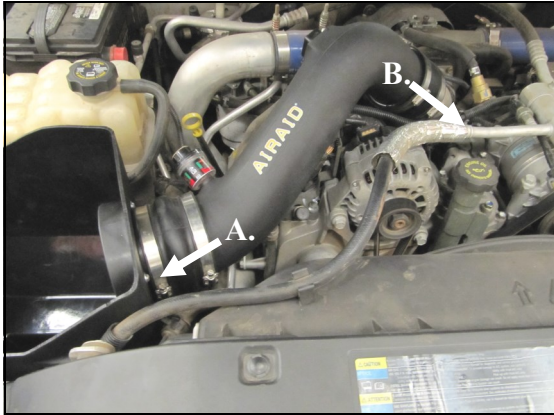
10. Install the factory rubber grommet and air filter minder into the Airaid Intake tube.



11. Install the urethane hump hose (#5) and two #72 hose clamps (#12) onto the large end of the Airaid Intake tube. *(Note: Leave hose clamps loose until final assembly.)*



12. Install the urethane coupler (#6) and two #60 hose clamps (#11) onto the small end of the Airaid Intake tube. *(Note: Leave hose clamps loose until final assembly.)*



13. A.) Install the hump hose end of the Airaid intake tube assembly onto the filter adapter first. B.) Slip the coupler end of the tube over the factory turbocharger inlet. Adjust for fit, and tighten the hose clamps



14. Install the Airaid Premium Filter (#1) onto the filter Adapter, and tighten the hose clamp. Install the Weather Strip (#7) onto the Airaid Cold Air Box. Reconnect the M.A.F. sensor wiring harness. *(Note: Start from one corner and work your way around to insure proper alignment of the weather strip.)*

15. **Double check your work!** Make sure there is no foreign material in the intake path. Make sure all clamps, hoses, bolts, and screws are tight.

16. **Reconnect the negative battery cable!**



WARNING! If your vehicle has a Vehicle Emission Control Information decal affixed to the factory airbox, a new replacement label must be obtained and installed in a readily visible position in the engine compartment in order to remain CARB compliant. Failure to do so will prevent the vehicle from passing a smog check. Replacement labels can be ordered from your local dealership. Regulations state that the VECI label shall not be affixed to any equipment which is easily detached from the vehicle. Label placement, under the hood on a painted surface is recommended.

Thank you for purchasing the Airaid Intake System. Contact Airaid @ (800) 498-6951 8:00 AM - 5:00 PM MST weekdays for questions regarding fit or instructions that are not clear to you. Your Airaid Intake System was carefully inspected and packaged. Check that no parts are missing, or were damaged during shipping. If any parts are missing, contact Airaid. The air filter element is protected from direct exposure to water and debris; care should be taken not to drive through deep water. WATER INGESTION IS THE DRIVERS RESPONSIBILITY! The air filter is reusable and should be cleaned periodically.

FILTER IDENTIFICATION

700-469 Airaid Oiled Media

701-469 Airaid SynthaMax Dry Media - Red

702-469 Airaid SynthaMax Dry Media - Black

For your Oiled media filter we suggest using the AIRAID Filter Tune-Up Kit!



P/N 790-551 Aerosol Spray
P/N 790-550 Squeeze Spray



SynthaMax

Do Not Oil

Synthamax Air Filters do not require oil. Service air filter as needed by cleaning with common non-petroleum all-purpose household cleaner and water. Simple Green®, Formula 409® or equivalent works great. Apply cleaner to outside of air filter and allow to soak. Then flush filter clean from the inside out with a garden hose and repeat steps if necessary. Do not apply high pressure water or air to clean filter. Allow filter to air dry and reinstall.