



## Custom Seat Cover Installation Guide



<b>Custom Seat Cover Installation</b>	<b>3</b>
<b>Removing a Headrest</b>	<b>4</b>
<b>Backrest Cover Installation</b>	<b>7</b>
<b>Seat Bottom Cover</b>	<b>10</b>
<b>Solid Bench</b>	<b>11</b>
<b>Console Cover Installation</b>	<b>12</b>
<b>Special Instructions - 1</b>	<b>13</b>
<b>Special Instructions - 2</b>	<b>14</b>
<b>Finishing Touches</b>	<b>15</b>



**Custom Seat Cover**

Also Available



**Custom Car Cover**



**Custom Dashboard Cover**



**Custom Sunshield**



**Custom Floor Mats**

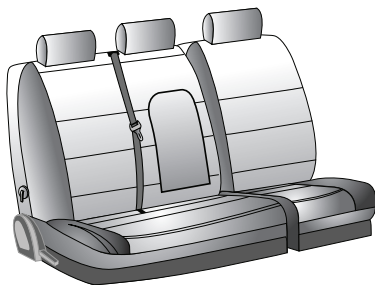
All pictures, diagrams & text, copyright 2009 Shrin Corporation

© 2009 SHRIN CORPORATION

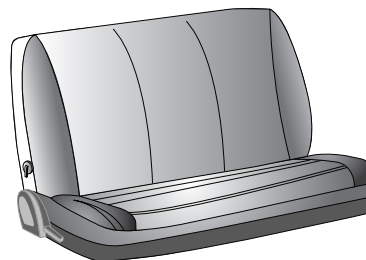
## Custom Seat Cover Installation



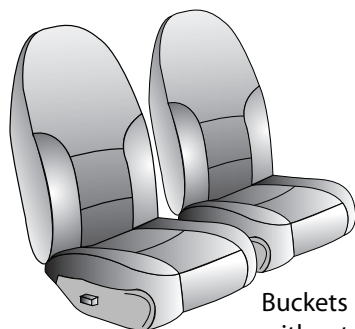
Buckets



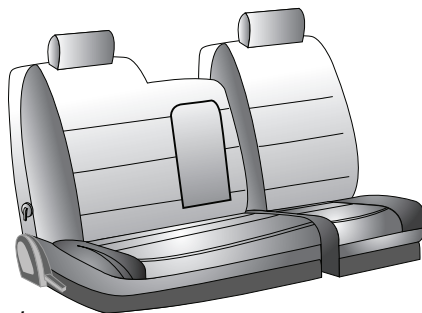
Split Bench  
with Integrated Belts



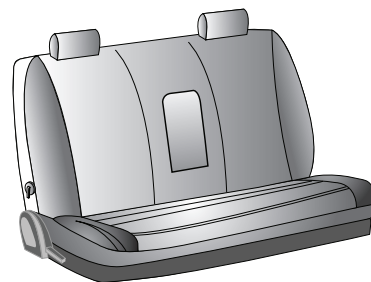
Solid Bench



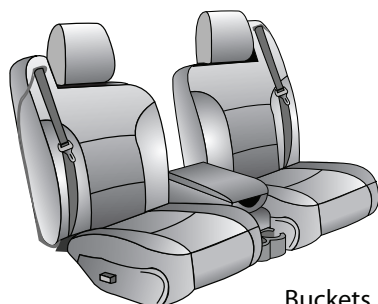
Buckets  
without Headrests



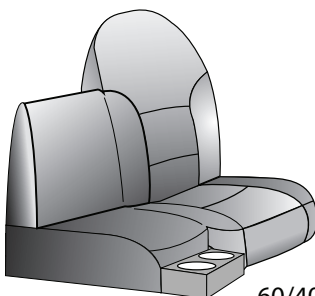
60/40 Split Bench



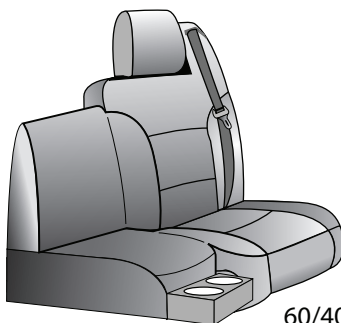
Solid Bench  
with Headrests



Buckets  
with Seatbelts

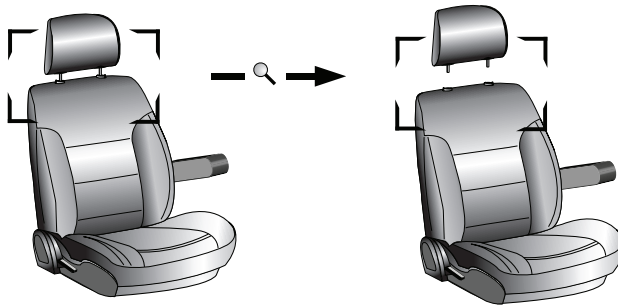


60/40 Split Bench



60/40 Split Bench  
with Integrated Belts

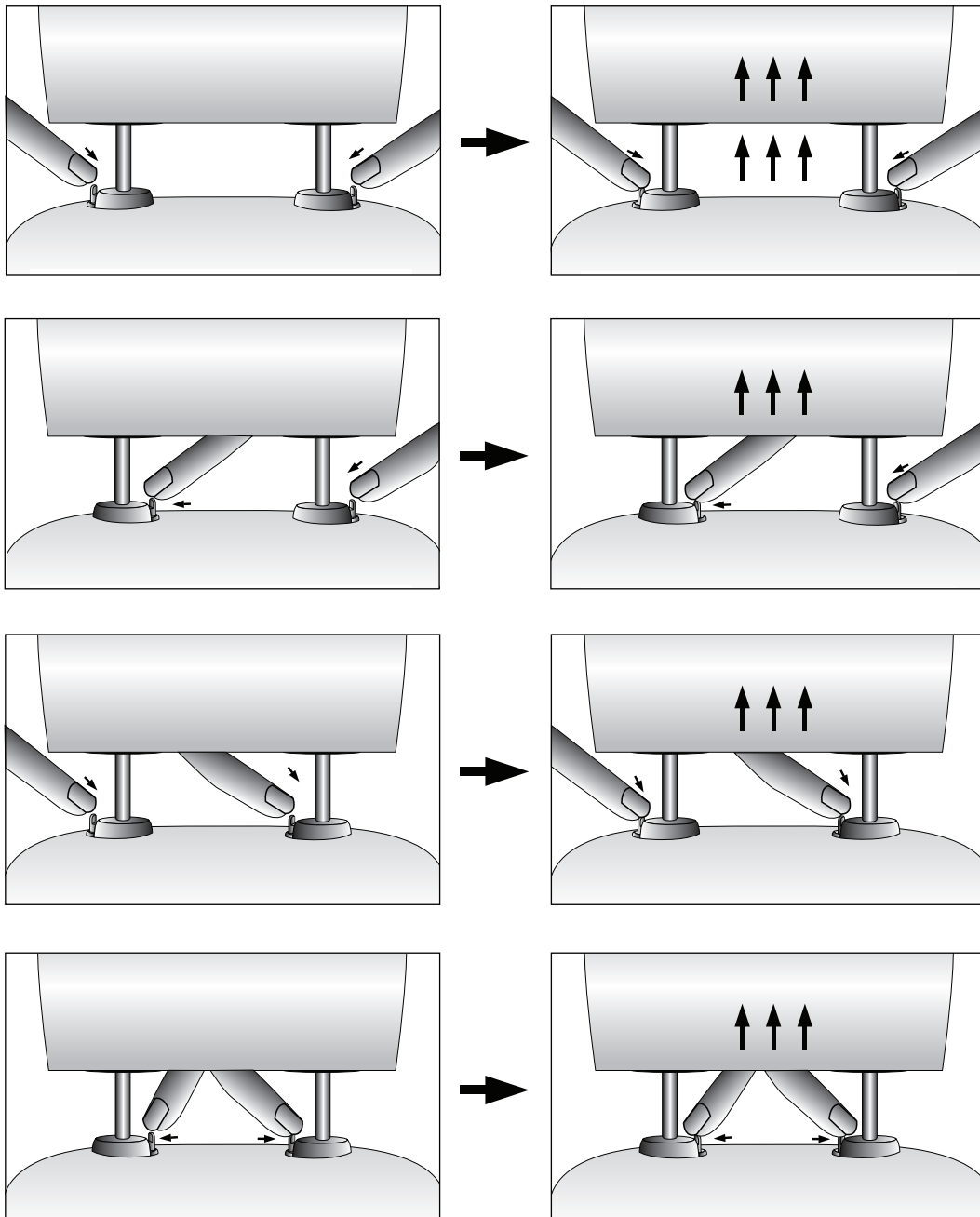
© 2009 SHRIN CORPORATION



## Removing a Headrest

**Tabs**

Depress one or both side tabs while lifting headrest. This may require more than one person.



All pictures, diagrams & text, copyright 2009 Shrin Corporation

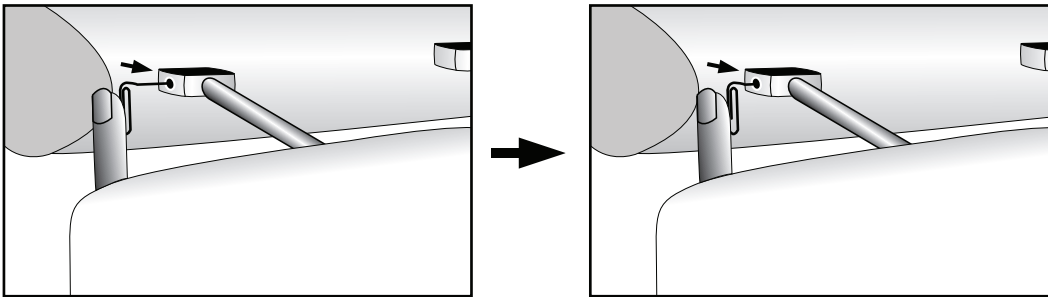
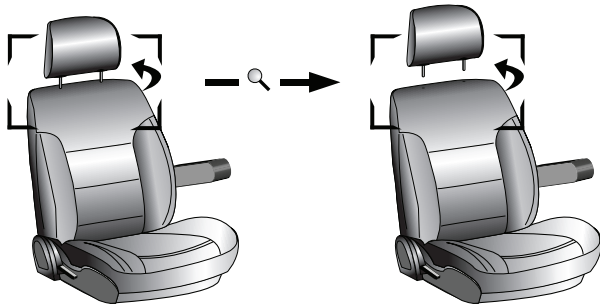
© 2009 SHRIN CORPORATION

## Removing a Headrest

Pin Holes on Headrest

Insert a paperclip end into the hole on the side of the headrest top.

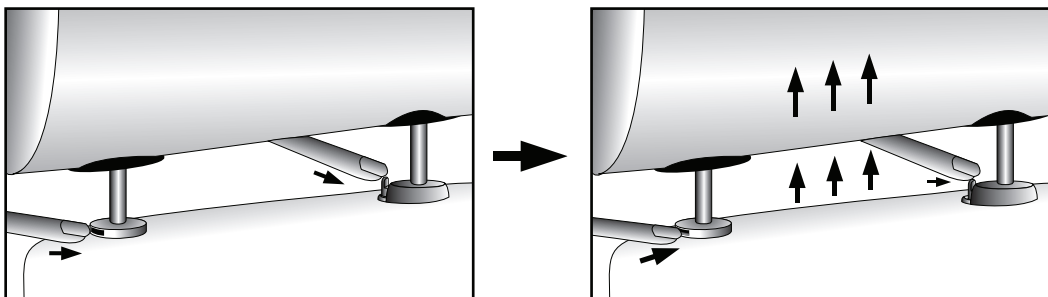
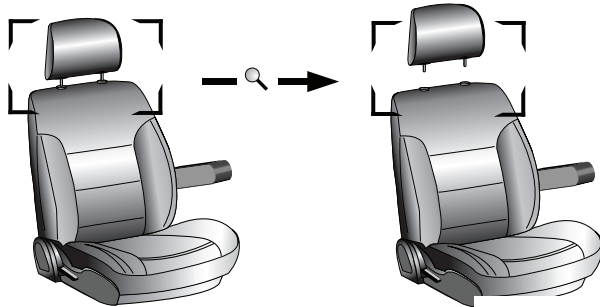
While pressing the paper clip, lift headrest.



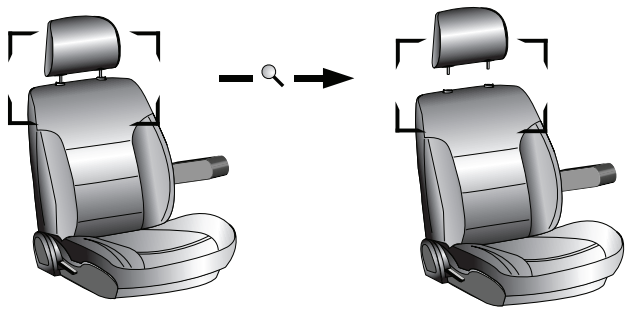
## Removing a Headrest

Slot and Tab

Depress the tab and press into the slot at the same time, and lift headrest. This requires two or more people.



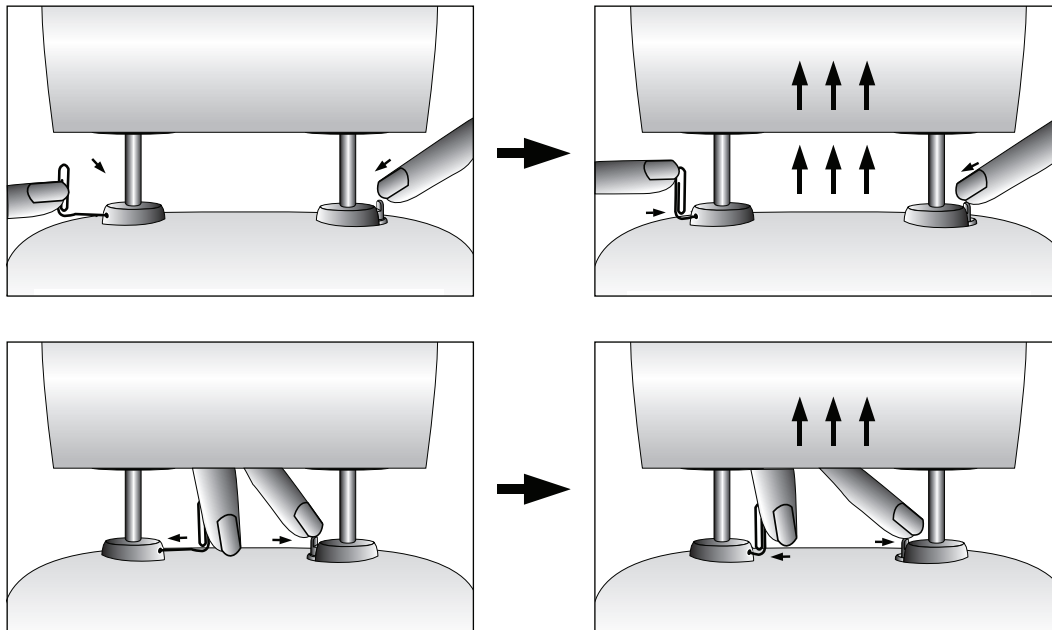
© 2009 SHRIN CORPORATION



## Removing a Headrest

### Pin Hole and Tab

Insert a paperclip end into the hole on the side of headrest base. While pressing the paper clip, press the tab on the other base; while pressing both, lift the headrest. This requires two or more people.

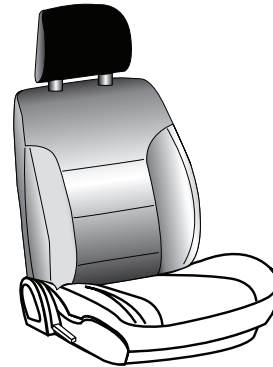
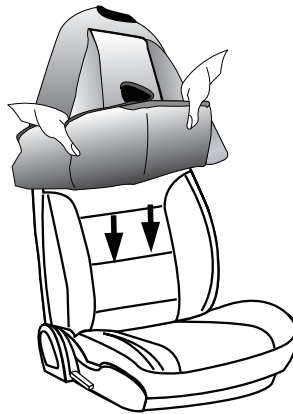
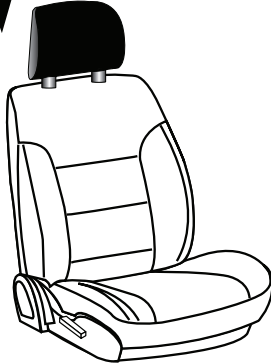
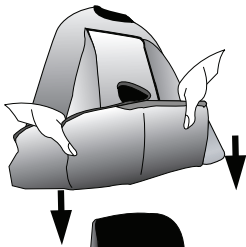


All pictures, diagrams & text, copyright 2009 Shrin Corporation

© 2009 SHRIN CORPORATION

## Backrest Cover Installation

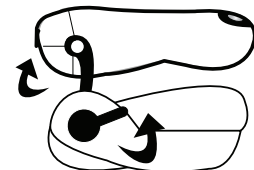
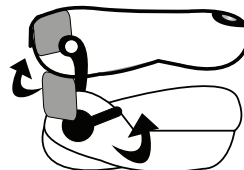
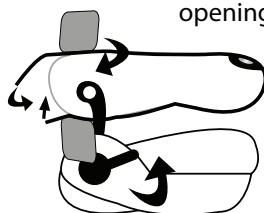
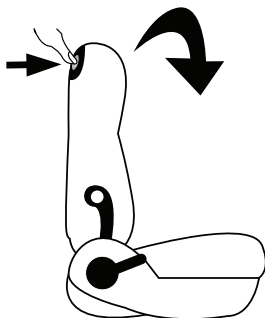
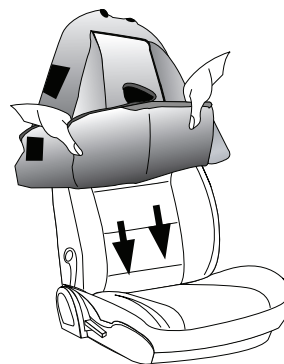
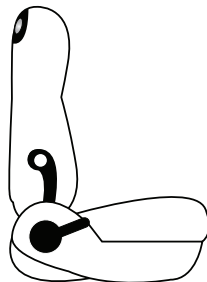
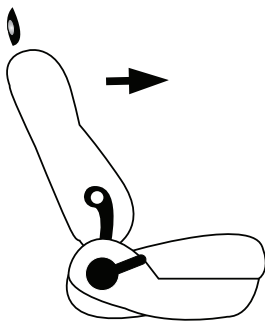
Bucket Seats with  
Non-Removable Headrest



Tip: Fold the seatback forward to gain better access while passing the flap through.

## Backrest Cover Installation

Certain Seats Required to be Folded  
Forward for Proper Installation.

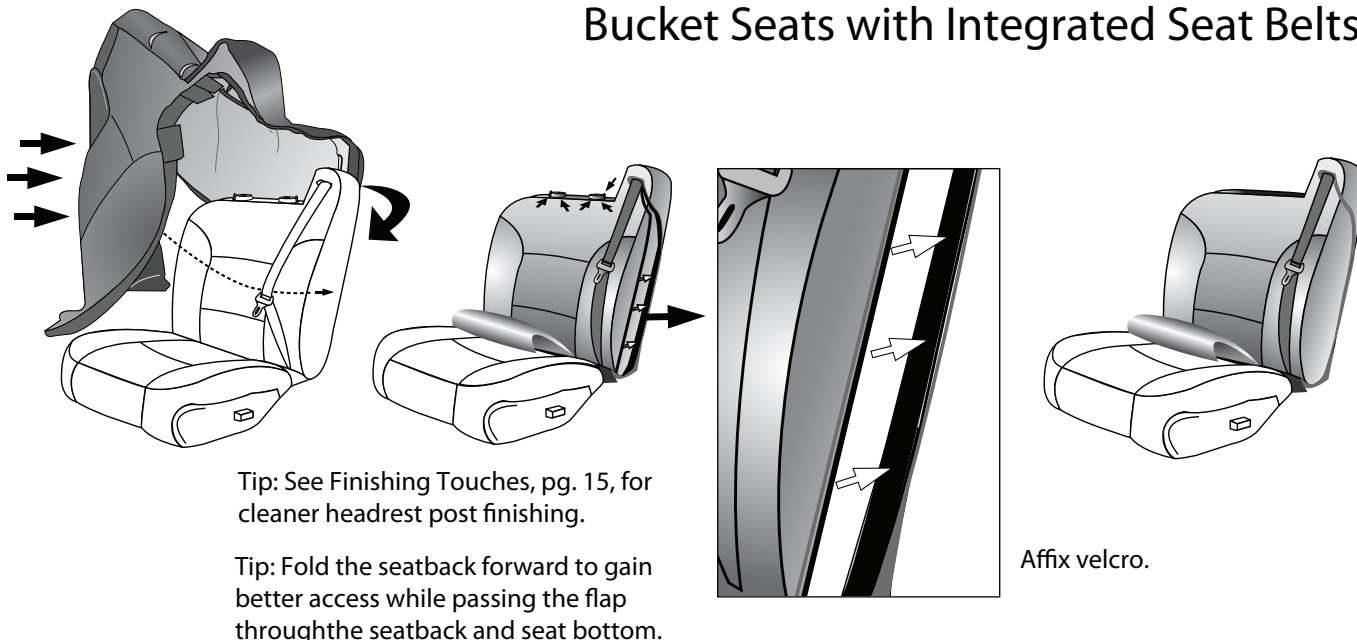


Attach velcro to the flap which is passed through the opening between seatback and seat bottom.

© 2009 SHRIN CORPORATION

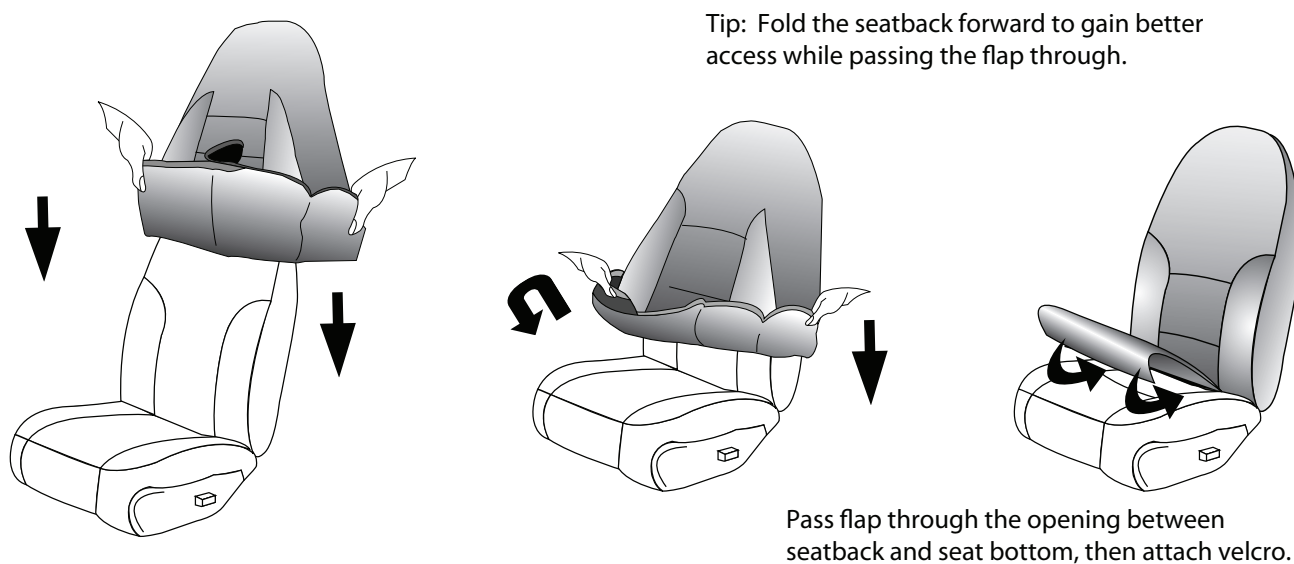
## Backrest Cover Installation

### Bucket Seats with Integrated Seat Belts



## Backrest Cover Installation

### High-Back Bucket Seats

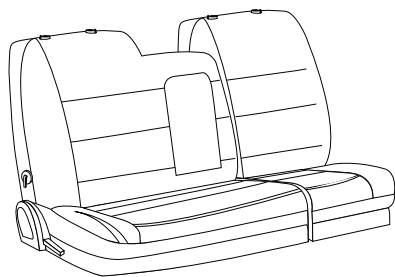




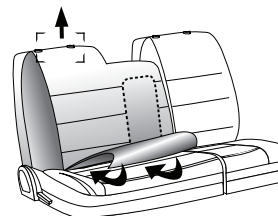
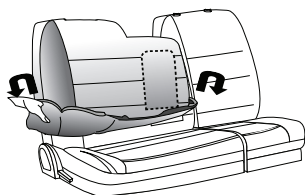
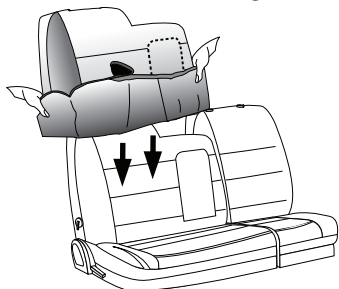
© 2009 SHRIN CORPORATION

## Backrest Cover Installation

### 60/40 Split Bench



See Removing a Headrest, pgs. 4-6,  
on removing headrests.

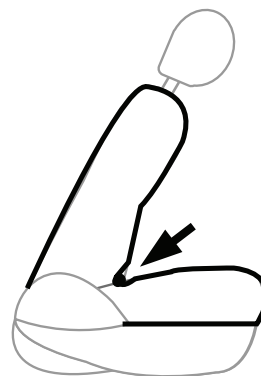
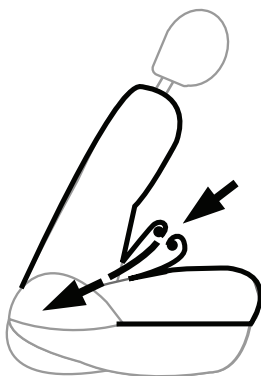


Tip: Fold the seatback forward to gain better  
access while passing the flap through.

Pass flap through the opening between  
seatback and seat bottom, then attach velcro.

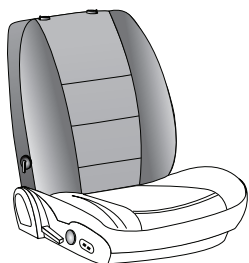
## Backrest Cover Installation

### Special - for Older Jeep Models

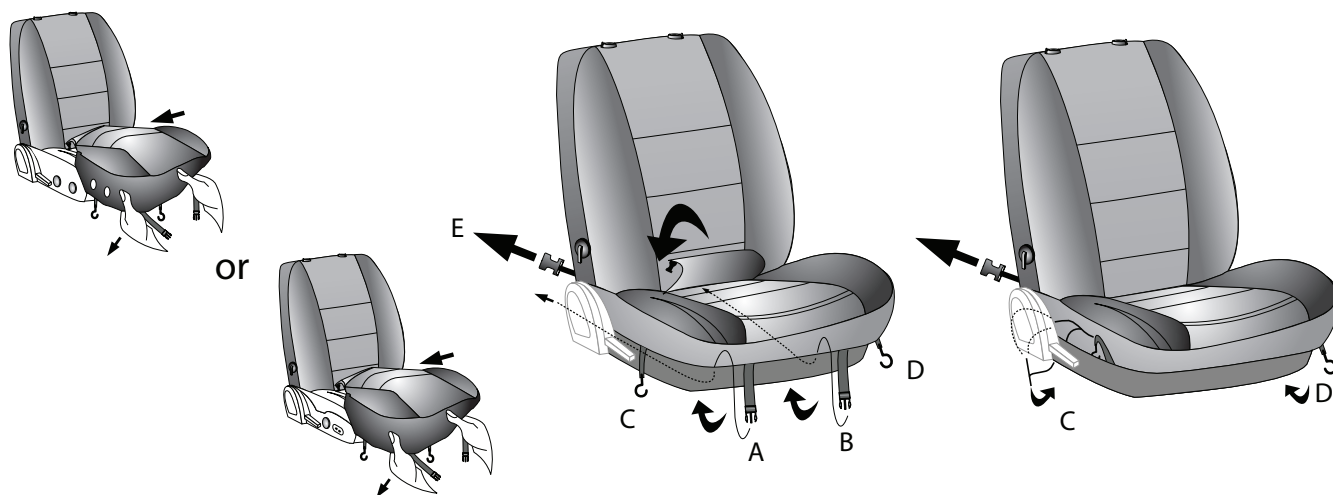


© 2009 SHRIN CORPORATION

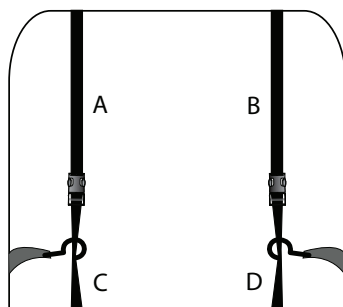
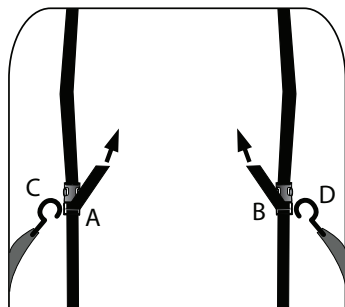
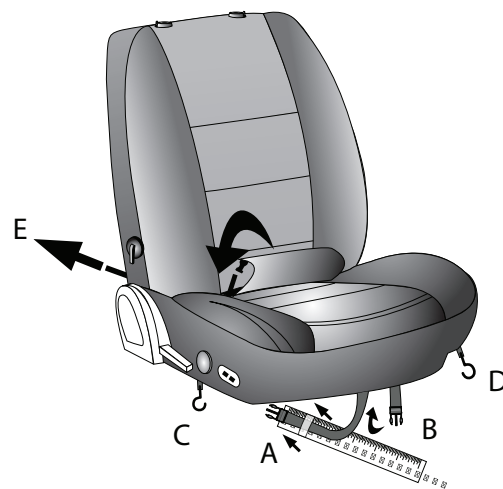
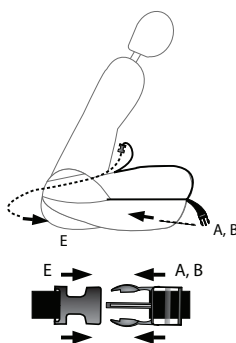
## Seat Bottom Cover



Tip: Fold the seatback forward to gain better access while passing the flap through.



Note: Some seat bases are not covered.



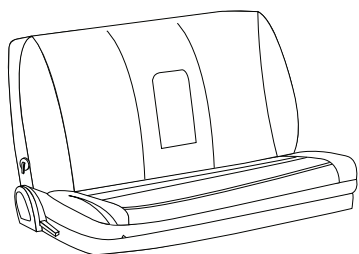
Position cover over seat bottom. Pass flap through and attach buckles and hooks.

Tip: Tuck excess material behind plastic trim pieces for an extra custom look.

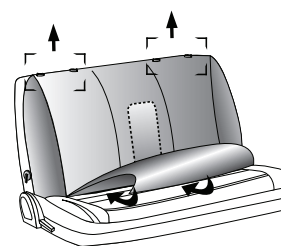
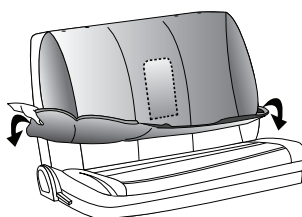
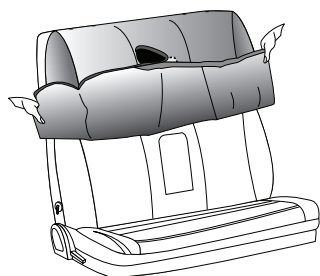
© 2009 SHRIN CORPORATION

## Solid Bench

Follow these simple instructions if you have a solid bench seat (made for three people, with and without headrests).

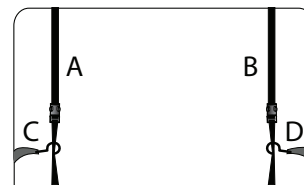
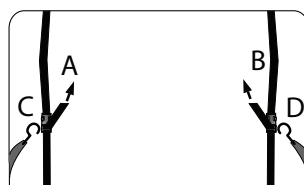
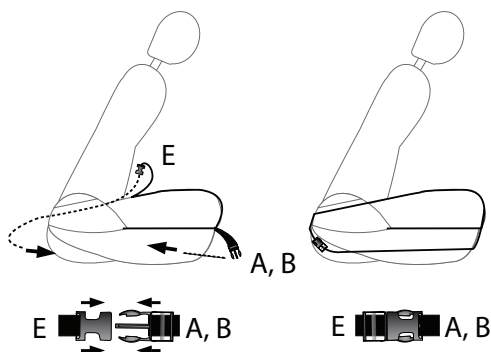
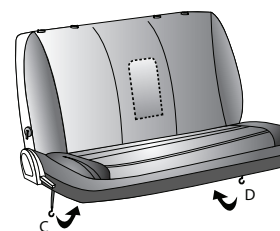
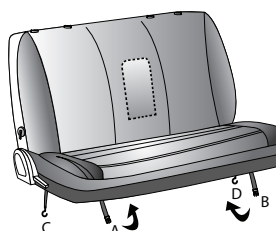
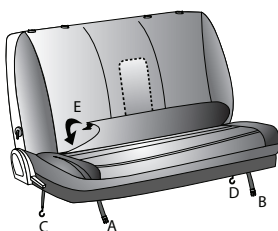
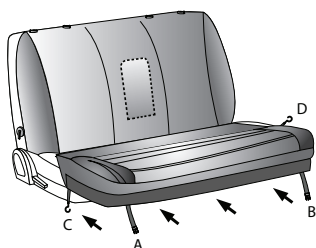


Tip: Fold the seatback forward for easier access.



Place backrest cover over backrest. If the seat has a folding armrest, place it in the “up” position. If seat has headrests, remove headrests prior to installation (see Headrest Removal, pgs. 4-6).

Tuck flap through the opening between seatback and seat bottom.

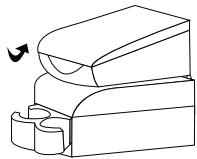
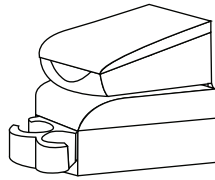


Place seat bottom cover over seat bottom and affix straps.

See Finishing Touches, pg. 15, for extra tips.

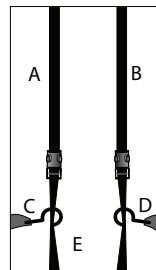
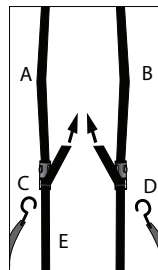
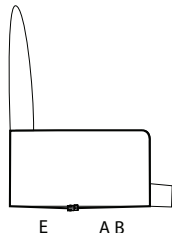
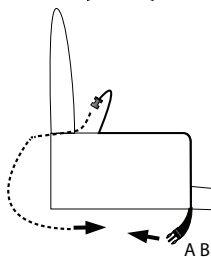
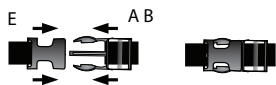
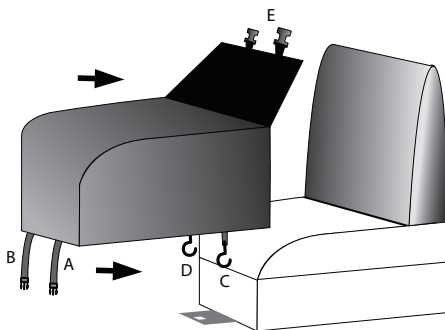
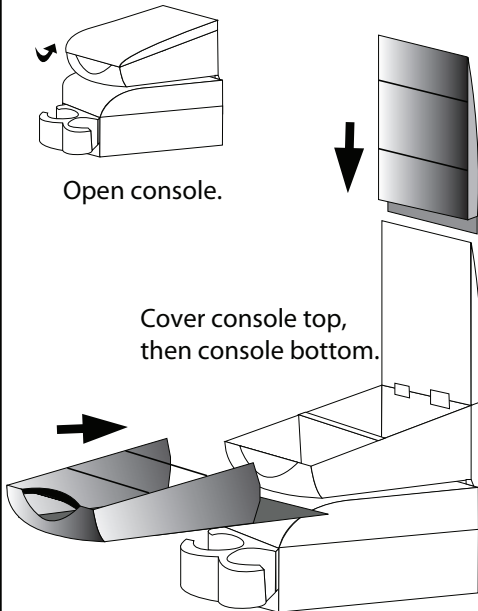
© 2009 SHRIN CORPORATION

## Console Cover Installation

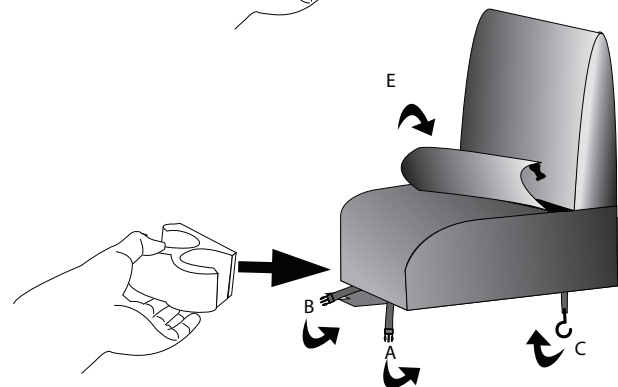
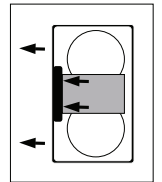
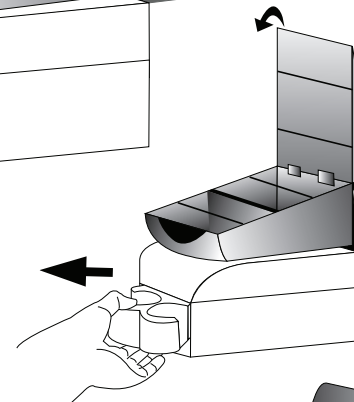
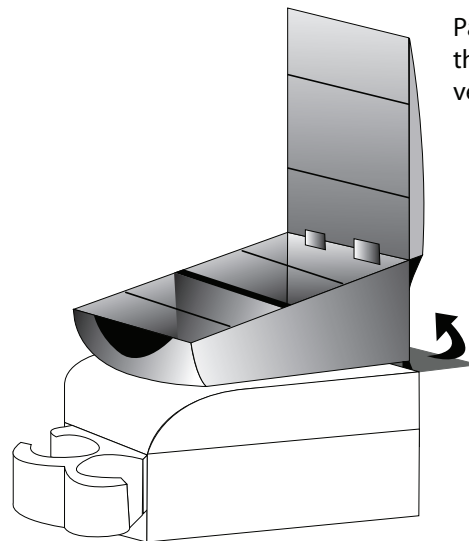


Open console.

Cover console top,  
then console bottom.



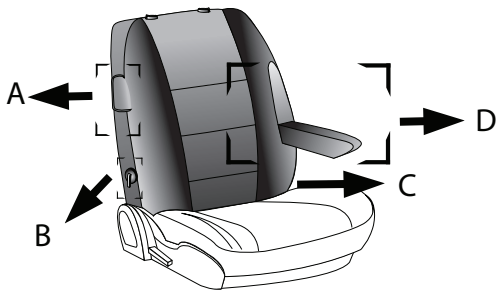
Pass console bottom flap  
through opening, then affix  
velcro.



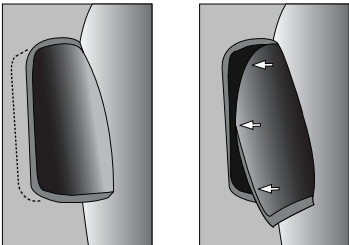
© 2009 SHRIN CORPORATION

## Special Instructions -1

Seats with airbags, lumbar supports and armrests require special instructions.



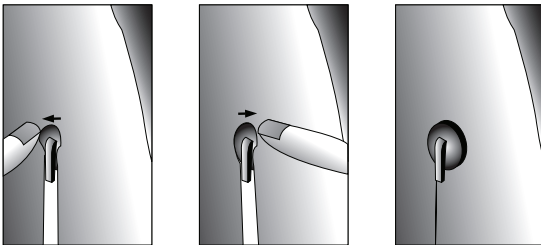
A



Seats with integrated seat airbags must be covered only with seat covers designed with opening flaps. The flap inserts inside the cutout, and should be able to open freely in case of deployment.

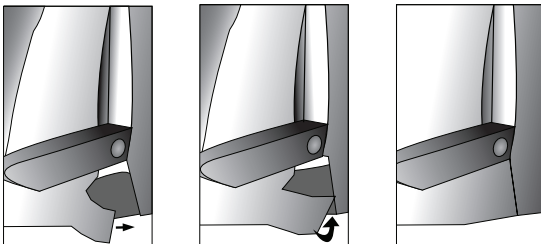
If your vehicle has seat-mounted airbags, be certain that the seat covers have airbag cutouts or flaps! **DO NOT COVER SEAT AIRBAGS!**

B



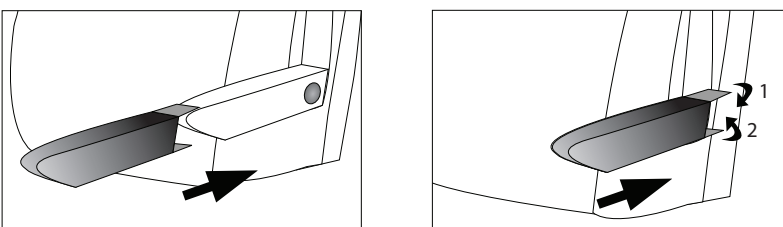
Some levers or controls may require a slit in the seat cover.

C



Installing backrest cover around armrests.

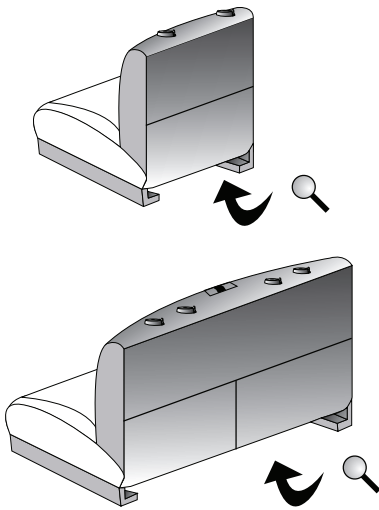
D



Installing armrest covers and affixing velcro.

© 2009 SHRIN CORPORATION

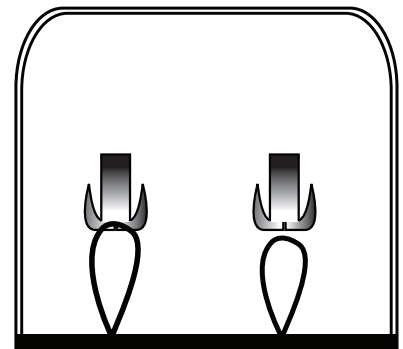
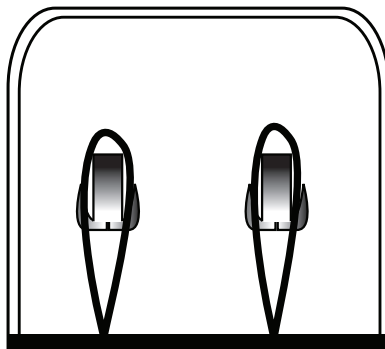
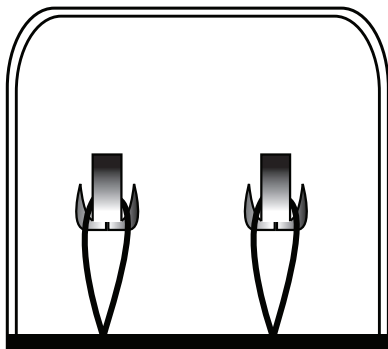
## Special Instructions - 2



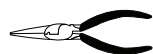
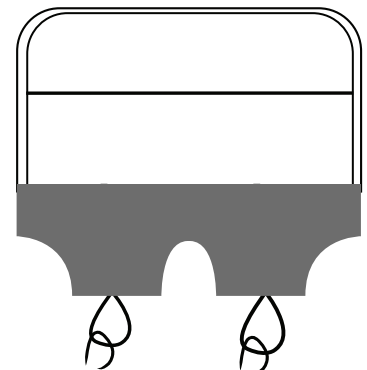
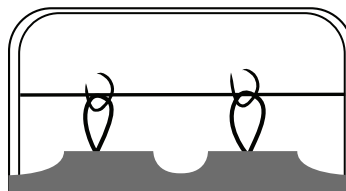
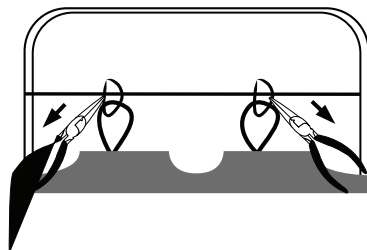
Certain late-model vehicles, including Lexus, Toyota, Infiniti, Nissan, Hyundai and others, have a piece of fabric which prevents the seat cover flap from going through the opening of the seatback and seat bottom.

This flap will need to be removed to install the seat cover. Below are instructions detailing the methods used to remove this fabric.

The views shown below are of the bottom of the seat.



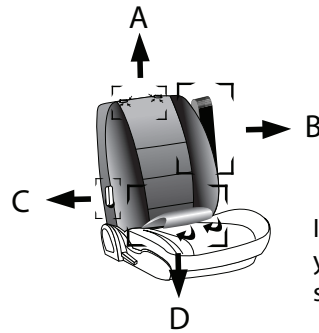
1. An elastic strap holds the flap of fabric to some permanently mounted hooks. To remove, simply pull the elastic forward and remove the elastic loop from the hook.



Pliers required.

2. Metal hoops hold the flap of fabric to a steel support under the seat. To remove, use a set of pliers to open the hoop, and remove the fabric.

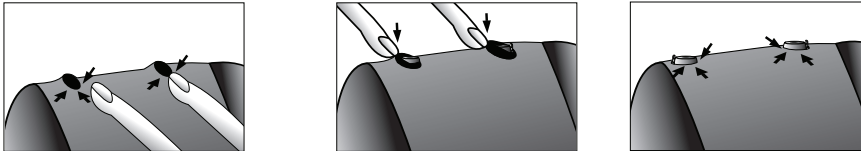
© 2009 SHRIN CORPORATION



## Finishing Touches

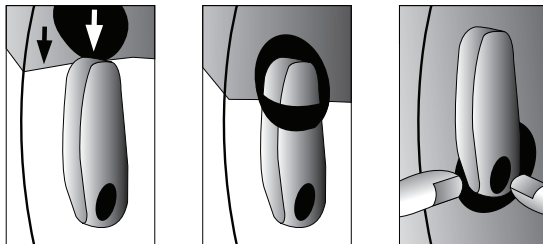
If you have extra time and a little mechanical know-how, your seat covers can fit even better by following these simple finishing touches:

**A**



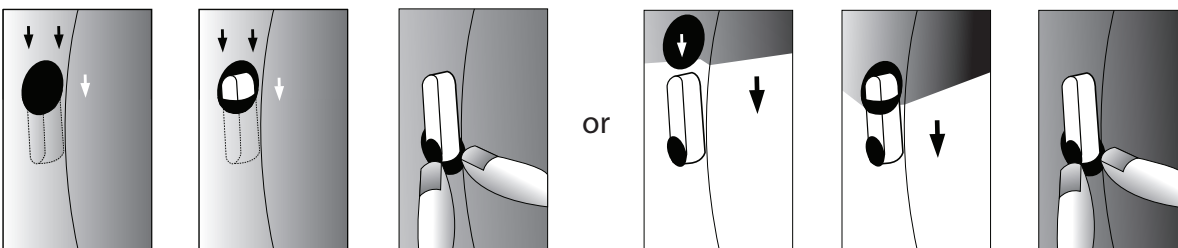
Material around the headrest posts can be stretched over the base and tucked underneath.

**B**



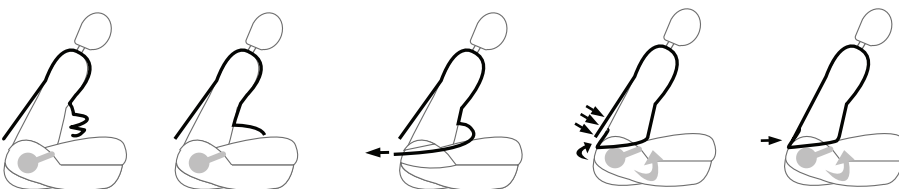
Adjust material around armrests by tucking excessive material around the base.

**C**



Pay special attention to small levers, such as lumbar support. Material should be tucked under the lever.

**D**



Tip: Fold the seatback forward for easier access.

After the first two weeks of use, tighten the seatback covers by releasing them, and--using the assistance of another person--pull the material very tight and affix the velcro fastener.



**900 E. Arlee Place  
Anaheim, CA 92805  
Tel: 714.850.0303  
Fax: 714.850.0828  
Toll Free: 800.COVERKING  
Coverking.com**

All pictures, diagrams & text, copyright 2009 Shrin Corporation