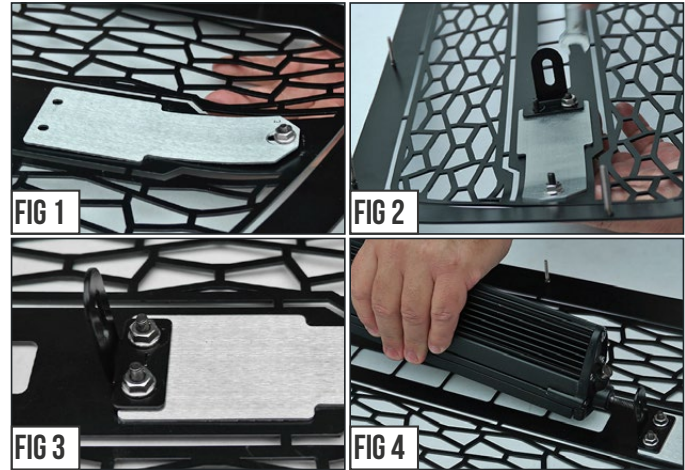


START HERE The ZROADZ Series Grilles comes into 2 different configurations. One style features the LED Light Bar mounting hidden on the backside, while the other style has exposed mounting provisions on the face side of the grille. Please note this and identify your ZROADZ Grille Series configuration and follow the instruction version that corresponds with your grille.

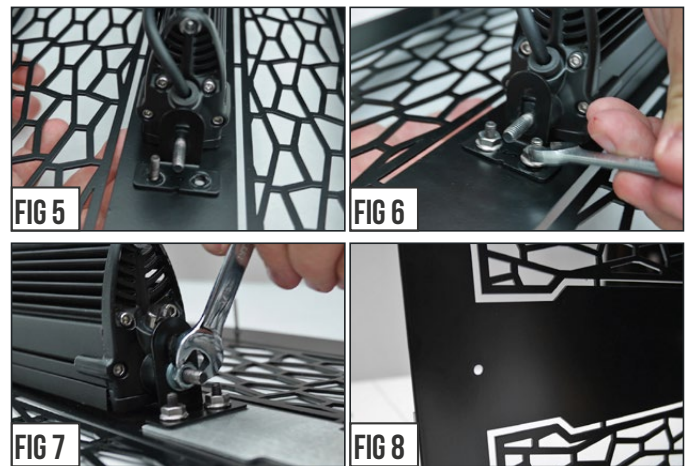
GRILLE CONFIGURATION STYLE 1



STEP 1 Lay out your parts. From the backside of the grille, put into place the ZROADZ Logo Backing Plate.



STEP 2 Put into place one of the Bracket Tabs and secure with provided Hardware as seen in Fig. # 2-4 and then from the backside of grille position LED Light Bar.

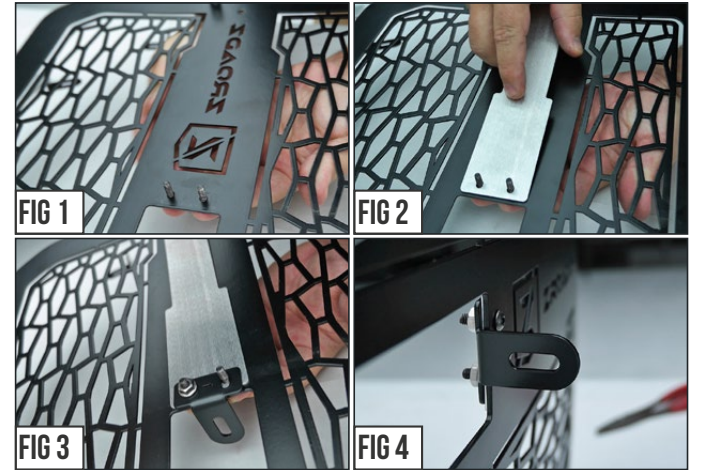


STEP 3 With LED Light placement set, put into position the remaining bracket and the finally tighten LED and all Mounting Brackets into their final secured position.

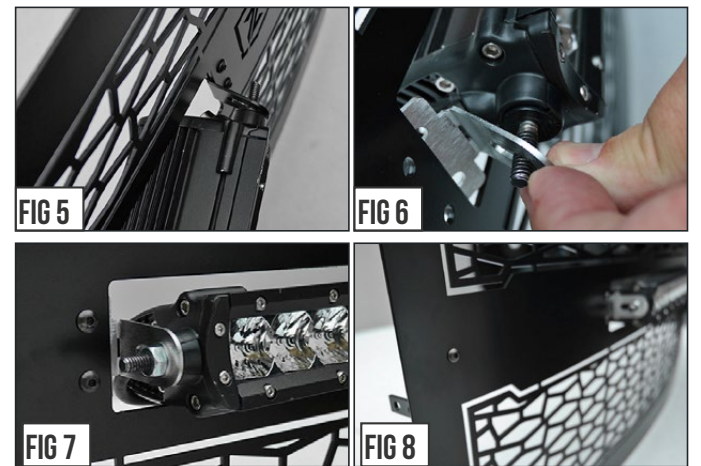
GRILLE CONFIGURATION STYLE 2



STEP 1 Lay out your parts. From the backside of the grille, put into place the ZROADZ Logo Backing Plate.



STEP 2 Put into place one of the Bracket Tabs and secure with provided Hardware as seen in Fig. # 1-4.



STEP 3 From the face side of grille slip the LED Light bar into place. On the opposite side, position the remaining bracket and finally tighten LED and Brackets into position.

STEP 4 There is a final step for both styles of ZROADZ Grilles. See both of the Figure #8 Images and note that there is an exposed hole. Use the Provided Hardware Button Head Screw and fill the hole and tightened down with Nut. This will create symmetrical look from side to side.

Z314521
2013 DODGE RAM
2500/3500 HD



Z314521
2013 DODGE RAM
2500/3500 HD

2013 DODGE RAM HD **Torch Series 1 Pc. Mesh Grille Kit**

For off-road use only

TOOLS REQUIRED:

Flathead Screwdriver
Socket Set

PARTS LIST

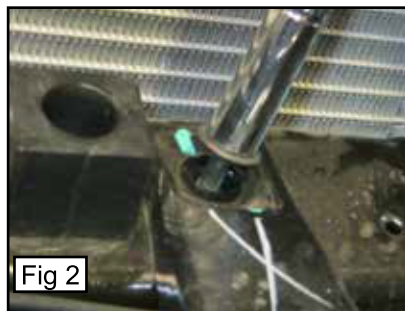
(2) Plastic Clips
(2) 10/32 Nylon Lock Nuts
(4) 1/4" Lock Washers
(2) 1/4" SS Nuts
(2) 1/4" Hex Head Bolts



PLEASE READ AND UNDERSTAND ALL INSTRUCTIONS BEFORE INSTALLATION. Auto makers offer varied models to each vehicle and occasionally manufacture more than one body style of the same model. To assure your part is correct; our tech department can be contacted at tech@trexbillet.com to verify fitment or assist with tech questions. All other inquiries can be directed to info@trexbillet.com. In the event you do not have internet access please call 1-800-287-5900.

Step 1 Grille Removal

Remove four plastic pop clips from the top of the plastic radiator cover (Fig 1). Remove the radiator cover. Remove four 10mm bolts from the top of the factory grille where it attached to the core support (Fig 2). Pull the factory grille from the bottom corner edges up and forward, there are several clips along the bottom of the factory grille that must release. Remove the factory grille.



Step 2 Main Grille Installation

Install the 2 plastic clips onto the ends of the 2 small brackets on the bottom corners of the mesh grille (Fig 3). Install the "C" bracket onto the bottom of the mesh grille. On the back of the mesh grille are two threaded studs, place the bracket end with the holes onto the threaded studs and use two 1/4 lock washers and two 10/32" nylon lock nuts to secure the bracket to the mesh grille (Fig 4). Now install the mesh grille onto the vehicle. The lower brackets with the plastic clips will install into the factory grille mounting holes, push them down into the mounting holes fully. The four brackets on the top of the mesh grille will install where the factory grille mounted. Use the factory bolts for this (Fig 5).

Now attach the "c" bracket to the factory bumper with the 1/4" bolts, lock washers and nuts. Replace the factory plastic radiator cover with the factory hardware. Installation complete.

