

TITAN pt. no.: 03 0000 0130

Important: Please read these instructions carefully and completely before starting the installation.

TITAN Fuel Tanks

INSTALLATION INSTRUCTIONS Generation V



Extended Capacity Replacement Tanks for RAM Cummins Diesel Trucks

7030313 & 7030313S For 2013-2015+ RAM truck models 2500 & 3500: (with pickup bed only): Crew Cab, Long Bed (8 ft.)

Required Tools:

- 1 ea. Ratcheting socket driver
- 1 ea. 16 mm socket
- 1 ea. 12 inch long socket driver extension
- 1 ea. 9/16 inch socket
- 1 ea. 9/16 end wrench
- 1 ea. 5/8 inch socket
- 1 ea. 5/8 inch end wrench
- 1 ea. Medium flat blade screw driver
- 1 ea. Needle nose pliers
- 1 ea. Torque wrench handle for socket
- 1 ea. Mallet or small hammer
- 1 ea. Razor blade or sharp bladed knife
- 1 ea. Hook pick or small ice pick

Recommended Optional Tools:

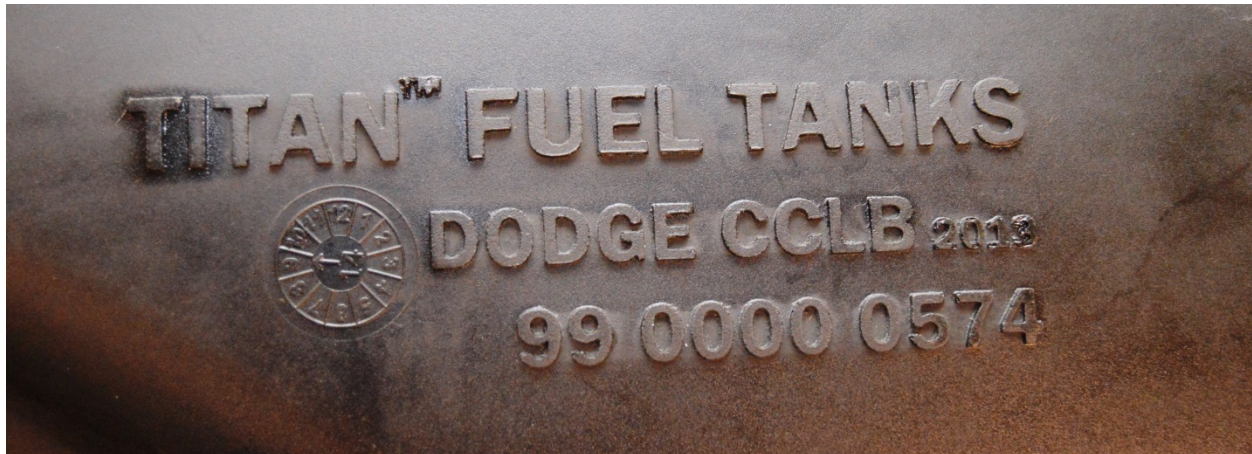
- 1 ea. Hydraulic transmission jack
- 1 ea. Impact wrench
- 1 ea. Vehicle Lift

7030313 Parts List:

1ea. Extra heavy-duty 55 gallon* cross-linked polyethylene body, (XLHDPE) fuel tank for DODGE diesel trucks:

Tank Body: Crew Cab, Long Bed 2013 --

"Super Series" **Tank Body Identification:** "DODGE CCLB 2013
99 0000 0574"



Note: The tank body has the above identification on its top. Please check to be sure the tank is properly identified as the one to fit your vehicle.

1 ea. Sending Unit Mounting Assembly (already installed on the tank body), consisting of:

2 ea.	98 0000 0400	Stainless Steel ½ flanges with 3/8" studs (mounted inside tank)
1 ea.	98 0000 0401	Flat flange gasket (mounted inside tank)
8 ea.	02 0000 0162	3/8" flat retainers
1 ea.	02 0000 0106	"O" Ring sending unit gasket (primary "O" ring gasket)
1 ea.	02 0000 0183	Top sending unit flange
8 ea.	02 0000 0163	3/8" nylon locking nuts
2 ea.	99 0000 0137	Rollover Vent, Fill-Stop Valve
1 ea.	99 0000 0615	2" x 5/16" RLA hose
1 ea.	99 0000 0161	39.00" x 5/16" RLA hose
1 ea.	02 0000 0112	Hose Barb Elbow installed in front insert of tank.
1 ea.	03 0115 0000	2013 RAM CCLB Strap Set
4 ea.	99 0000 0113	Universal Strap Shims (Packaged in plastic bag).
2 ea.	99 0000 0103	Strap Bushing, Extruded (NOT included when TITAN Custom Shield is included as with 7030303S).

1 ea. 03 0108 0000 RAM "SS" 2013 Crew Cab, Long Bed Strap SET

7030313S Parts List:

Same as above, except "2 ea. 99 0000 0103" is deleted AND the following is added:

1 ea.	03 0114 0000	TITAN DODGE Custom Shield for DODGE CCLB (7030313)
1 ea.	99 0000 0618	Quick Tie for Shield



IMPORTANT NOTICE: Before installation, be sure to thoroughly inspect inside of the tank for ANY foreign debris!

I. Remove Original Equipment Tank

Step	Description
1	Place the vehicle on a hoist that leaves the entire underside of the frame unobstructed.
2	Drain all the fuel from the original equipment (OEM) tank using a pump or siphon.
3	Remove OEM tank plastic shield or shell (if applicable) from vehicle. Most

vehicles may require the removal of the left rear fender liner and even the wheel to facilitate access to the tank fill and vent hoses (See Fig. 1).



(Fig. 1) Some vehicles may require the removal of the fender liner and perhaps the left rear wheel so as to facilitate access to the tank fill and vent hoses.

- 4 Support the OEM tank.
- 5 Disconnect the fill hose from the OEM tank's king nipple.
- 6 Loosen and remove OEM tank straps by undoing the bolts on straps at inside of tank and the outside of the frame, and lower tank a few inches.
- 7 Disconnect vent line hose line coming from fill spout to tank. Disconnect at fill spout tubing end. Also, disconnect small vent line.
- 8 Disconnect fuel gauge electrical connection from sending unit.
- 9 Disconnect fuel and return lines from the sending.
- 10 Remove the OEM tank from the vehicle.

II. Prepare Vehicle and Replacement Tank

Step	Description
11	Loosen the OEM hold-down ring on the sending unit by turning it counter-clockwise (See Fig. 2). Before removing the sending unit, notice where the sending unit fuel line nipples and the electrical fitting are pointing or "clocked", <i>they will need to be installed the same way, at the same angle in the replacement tank</i> . Remove the sending unit from the OEM tank. Do NOT reuse factory "O" ring seal.



(Fig. 2) Loosen the hold-down ring on the OEM tank by turning counter-clockwise. Note where the connections on your vehicle's sending unit are "clocked" and install so they are located in the same position in the new tank.



(Fig. 3) Place the sending unit into the TITAN tank, install the top flange, and tighten the nylon lock nuts to 20 ft. lbs using a "star" pattern using a torque wrench.

- 12 The new TITAN fuel tank comes with the sending unit mounting hardware assembled. Remove the 3/8" nylon lock nuts from the studs holding the top flange. Remove the top flange. You will see the "O" ring gasket in place under the flange. Leave the "O" ring gasket, studs, and retainers assembled as they are
- 13 CHECK THE 1/2 FLANGES INSIDE THE TANK TO BE SURE THEY ARE SEATED FLAT AND NOT OVERLAPPING and have not shifted in shipment. Make sure the flat gasket is in place between the 1/2 flanges and the top inside surface of the tank.
- 14 Carefully place the sending unit into the new TITAN replacement tank. Make sure the "O" ring gasket is placed properly under the sending unit to seal correctly. Before installing the sending unit into the replacement tank, **BE SURE THE INSIDE OF THE TANK IS FREE OF DIRT OR DEBRIS OF ANY KIND.**
- 15 After placing the sending unit into the tank on top of the "O" ring gasket, rotate it (carefully so as not to displace the "O" ring) so the fuel fittings and electrical connections are positioned (or "clocked") at the *same* angle as in the OEM tank.
- 16 Place the top flange on the studs, on top of the sending unit, so as to hold it down securely.
- 17 Use the 3/8" nylock nuts to tighten down the top flange. **Tighten to 20 foot pounds (ft. lbs) of torque using a torque wrench.** Be sure to tighten in a "star" pattern, starting with the four studs adjacent to where the 1/2 flanges meet so as to prevent the flanges from overlapping, and to ensure all nuts are equally tightened and the "O" ring gasket is properly seated. Carefully "snug" the nuts equally before tightening to specification. After initially tightening to 20 foot pounds (ft. lbs.), it is a good practice to check the torque again after 15 minutes or so (See Fig. 3).

III. Install Replacement Tank in Vehicle

- | Step | Description |
|------|---|
| 18 | If the optional TITAN Shield was ordered with the tank, place it under the tank.
For 7030313 tanks, using the Quick Tie provided, securely fasten the front of the shield to the front section of the tank 7" in front of front strap (See Fig. 6 below). |
| 19 | Place tank (and shield if included) on a transmission jack. Lift the tank partway into the vehicle and reattach the fuel and return lines, and the electrical connection to the sending unit. Finish lifting the tank into the vehicle and connect the fill and vent line hoses from the fill spout to the tank.
Make sure the vent line hose angles downward from the fill spout to the tank and that there are no "sags" (or kinks) in the line or it will not vent properly.
Attach the small vent line from the fill spout to the 5/16 line tee in the rollover valve vent line (See Fig. 5). Clamp hoses tightly using OEM clamps on both ends where applicable. |
| 20 | If optional TITAN Shield is NOT to be installed, you will need to install the rubber bushings now on both straps. Place the bushings so they are centered in the bottom of the straps with the bushing's channel side toward the strap. Press the bushings securely into place (See Fig. 4). |



(Fig. 4) If optional TITAN Shield is not to be installed, install rubber bushings (pn 99 0000 0103) on both straps with the channel side toward the strap.



(Fig. 5) Photo shows the fill and main vent hoses transferred and installed on new TITAN tank. Note the 5/16" hose between the two rollover valves. The small line from the vehicle's fill spout will attach to the tee in this line. The tab on the sending unit lines up with the "TAB LOCATOR" marks on the tank body.

- 21 Attach the inboard sides of the straps and be sure to thread two zinc plated shims onto each strap bolt (See Fig. 7). Tighten the bolt and strap against the shims. If the strap does not hold the tank tightly enough, remove one shim at a time until it is tight. Tap straps with a mallet, if needed, to form them against the bottom of the tank.



(Fig. 6) If the optional Custom Shield is installed be sure to use the included Quick Tie to hold the shield securely to the front section of the tank as shown here. Install about 7 inches in front of front strap. Trim any excess Quick Tie



(Fig. 7) Tighten the bolt and bracket against the shims. If the strap does not hold the tank tightly enough, remove one shim at a time until it is tight.

- 22 Make sure ALL mounting hardware, clamps, bolts, etc. are properly installed and TIGHT. Double check it.
- 23 Lower vehicle, **fill tank completely with diesel fuel and thoroughly check for leaks.**

* All capacities are approximate

Be sure to return the completed warranty registration for your new Titan fuel tank; or you can register on-line at www.titanfueltanks.com

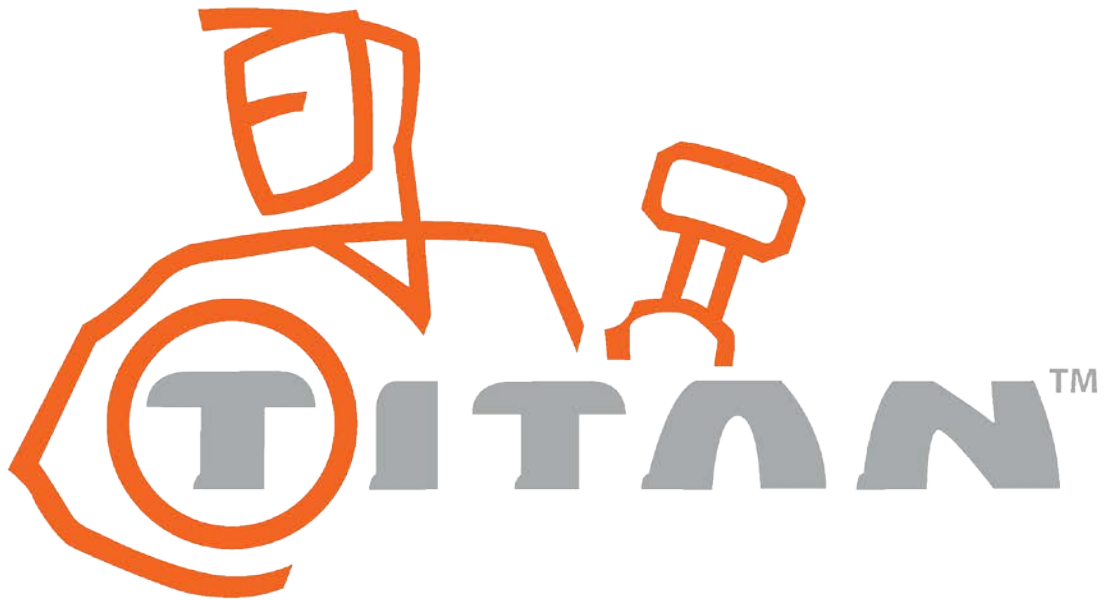
You will find your tank's serial number located approximately ½ way up the driver's side located towards the rear of the tank; adjacent to the sending unit.

Write your tank's Serial Number here: _____

A tank must be registered within sixty (60) days of receipt for the warranty to be valid.

Warranty is void if product is improperly installed.

For questions or customer service call (800) 728-4982



TITAN Fuel Tanks
P.O. Box 2225
Idaho Falls, ID 83403 USA
Telephone (208) 522-1325, FAX (208) 529-2162
www.titanfueltanks.com
TITAN Fuel Tanks are PROUDLY MADE IN THE USA
Revised 10.01.14 ©2014 Supertanks, LLC