



**TEL:1-866-XANATOS**

## **INSTALLATION INSTRUCTIONS**

**PART#: 7TU15SS\7TU15A  
TAIL LIGHT GUARD FOR TOYOTA 4RUNNER 03-08**



**PARTS LIST:**

1	Passenger Side Taillight Guard	4	#1/4 x 1" Sheet Metal Screws
1	Driver Side Taillight Guard		

**PROCEDURE:**

1. **REMOVE CONTENTS FROM BOX. VERIFY ALL PARTS ARE PRESENT. READ INSTRUCTIONS CAREFULLY.**
2. Open rear door. Grasp the taillight housing with one hand and pull gently. **WARNING:** Be sure to pull straight out to avoid possible damage. If is too tight, then use a large standard flat screw driver and something like a cardboard backing of a note pad or towel to protect the paint from damage. Gently pry off the outside of the taillight assembly out of the vehicle. This is the same procedure required to change a burn out taillight in the assembly.
3. Carefully attach Taillight Guard onto taillight housing by sliding down Taillight Guard from the top of the taillight housing. The two support brackets should hook to the edge of the taillight housing. If they don't fit correctly, they can be adjusted to fit correctly using a pair of pliers.
4. Return the assembly back to the vehicle making sure that the Taillight Guard is aligned and centered correctly on the taillight housing.
5. Close rear door and make sure that the Taillight Guard does not interfere.
6. Once the Taillight Guard is aligned, use the holes on the bracket as a template to mark the drilling location on the taillight housing (Figure 2).
7. Use the included (2) #1/4 x 1" Sheet Metal Screws to secure the Taillight Guard.  
**IMPORTANT:** Do not over tighten or a pull out can occur.
8. Repeat steps 2-7 for opposite side.

**IMPORTANT:** Do periodic inspections to the installation to make sure that all hardware is secure and tight.

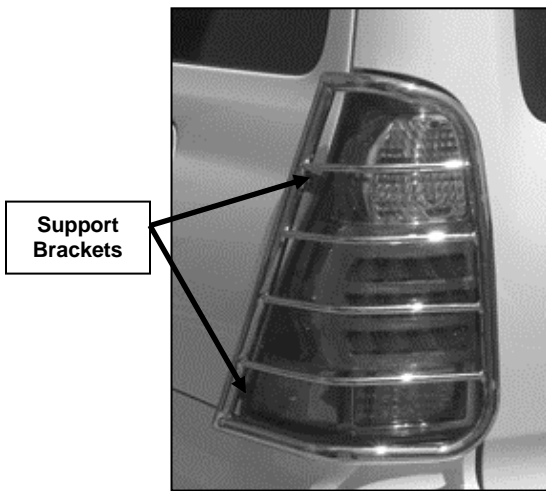


Figure 1

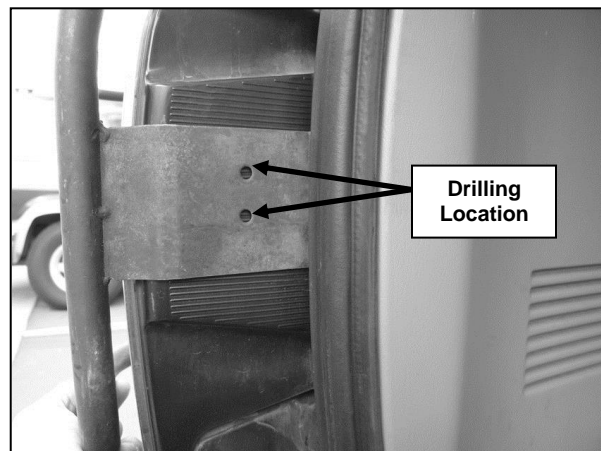


Figure 2