

# INSTALLATION INSTRUCTIONS

## 2009-2015 SUBARU FORESTER REAR BUMPER GUARD PART# 8SU01SS

Qty	Hardware	Qty	Hardware
2	Mounting Brackets	4	Screws (bracket to bar)
2	T-bolts (bracket to chassis)	8	Flat Washers (bracket to bar)
2	Flat Washers (bracket to chassis)	4	Lock Washers (bracket to bar)
2	Lock Washers (bracket to chassis)	4	Nuts (bracket to bar)
2	Nuts (bracket to chassis)	2	*** Flat Washers to use with factory bolts (bracket to chassis)



**STEP1:** Verify all parts are present. Read instructions carefully before starting installation.



Fig 1

**STEP2:** Starting from the Passenger Side, remove the muffler from the chassis.



Fig 2

**STEP3:** Locate the dashed line area on the heat shield as shown on Fig2, cutting a 2"x 4" opening.



Fig 3

**STEP4:** Remove the factory bolt on the opposite side of the welded nut. Mount the Passenger Side Mounting Bracket with the factory bolt and a Flat Washer. (Fig3)



Fig 4

**STEP5:** Locate another hole on the chassis as shown on Fig4, and secure the bracket with a Screw, a Flat Washer, a Lock Washer and a Nut.

**STEP6:** Repeat step4-5 for the Driver Side Mounting Bracket installation.

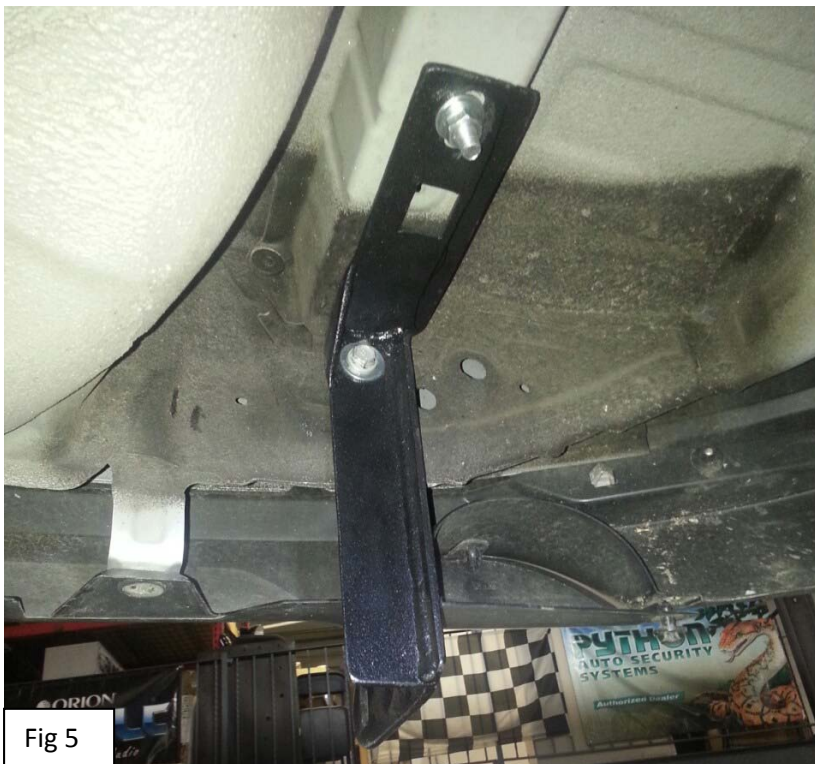


Fig 5

**STEP7:** Select the rear bumper guard and install it on the brackets. Level and adjust, then tighten all hardware in the end.