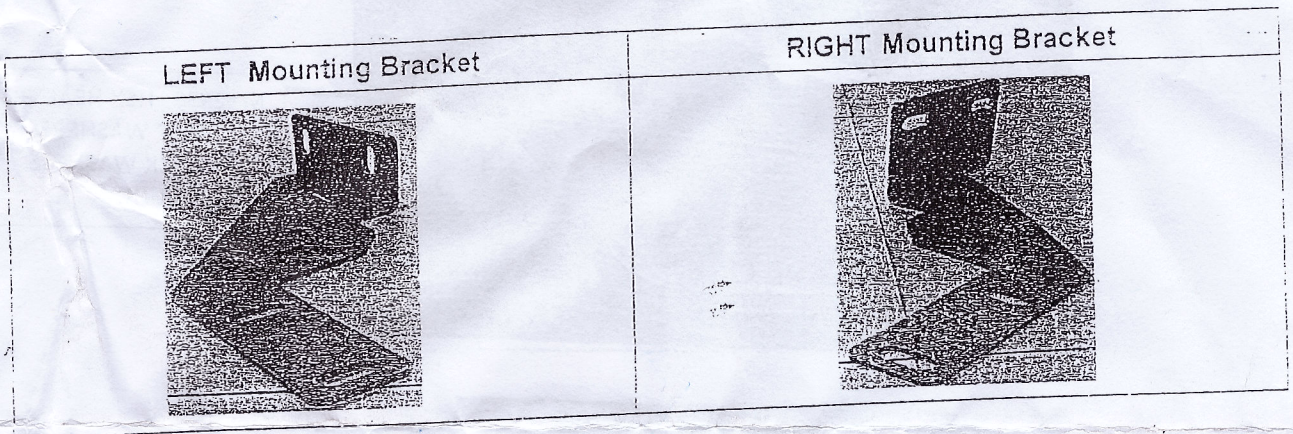




# 8HYSA13SS-DL

## Rear Guard with Double-layered Tube for Hyundai Santafe 2013

PART LIST:			
QTY	PART DESCRIPTION	QTY	PART DESCRIPTION
1	Rear Guard	4	M12 LOCK WASHERS
1	LEFT Mounting Bracket	4	M12 HEX NUT
1	RIGHT Mounting Bracket	4	M10-1.25*30 HEX HEAD BOLTS
4	M12X30 HEX HEAD BOLTS	4	M10 FLAT WASHERS
8	M12 FLAT WASHERS	4	M10 LOCK WASHERS



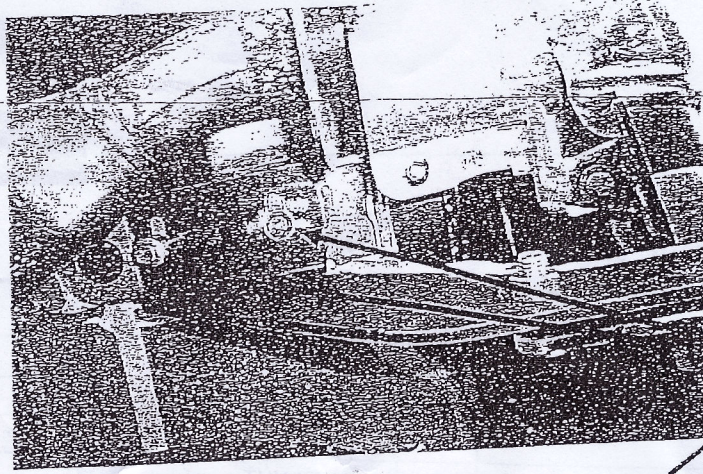
REMOVE CONTENTS FROM BOX. VERIFY ALL PARTS ARE PRESENT  
 READ INSTRUCTIONS CAREFULLY BEFORE STARTING INSTALLATION

*Install Time: 30 – 60 Minutes; Professional Installation*

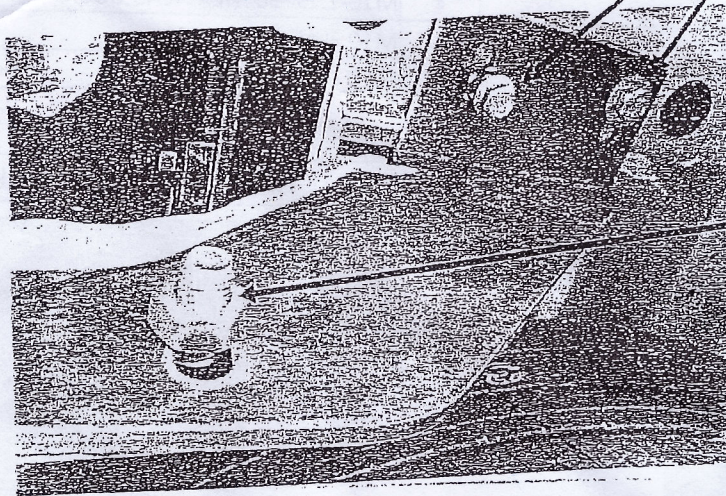
### INSTALLATION PROCEDURE

1. Pls prepare the tools for installation, follow as: 12-14、17-19 wrench.
2. Put the mount bracket into the girder of the car, and tighten it with M10-1.25\*30 Hex bolt.
3. Install the Rear Guard on the mount bracket, and tighten it with 1t M12\*30 Hex bolt
4. Installation is finished.

Do periodic inspections to the installation to ensure all hardware is secure and tight.



M10-1.25\*30 HEX HEAD BOLTS  
M10 FLAT WASHERS  
M10 LOCK WASHERS



M12X30 HEX HEAD BOLTS  
M12 FLAT WASHERS  
M12 LOCK WASHERS  
M12 HEX NUT

