



Installation Instructions

BR5 Front Bumper Replacement Part Number 24171T

2014-2015 Chevrolet Silverado 1500 2/4WD

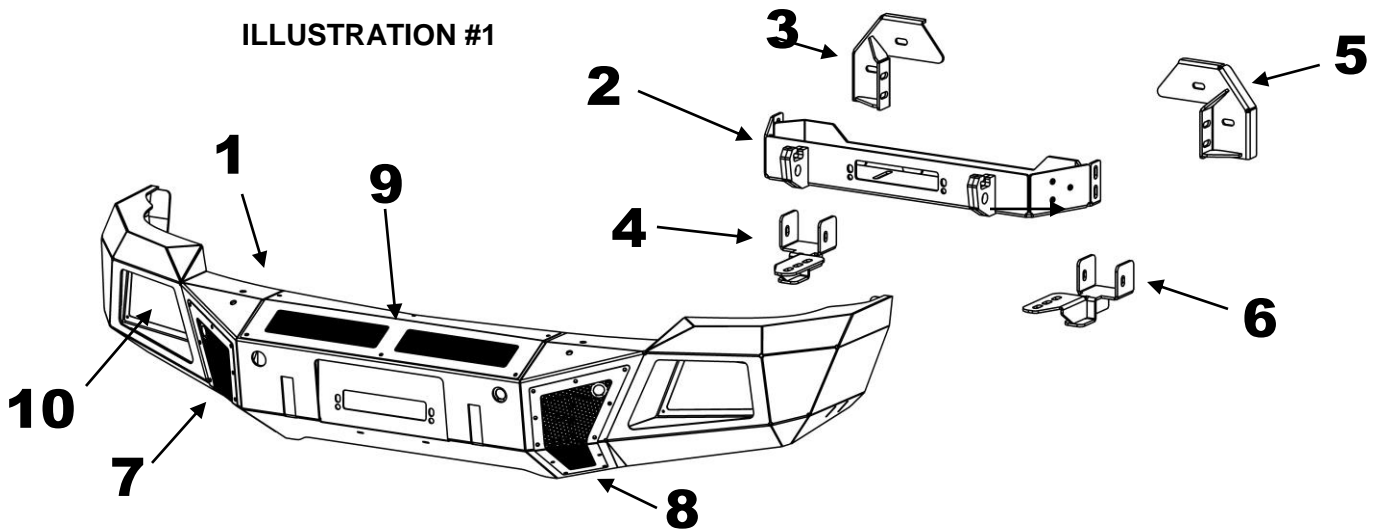
Do not attempt to install this product on any vehicle other than the one listed above!

Parts List

Item	Qty.	Part #	Description
1	1		Bumper Replacement Shell
2	1		Mounting Plate/Winch Tray
3	1		Passenger Side Frame Bracket
4	1		Passenger Side Auxiliary Bracket
5	1		Driver Side Frame Bracket
6	1		Driver Side Auxiliary Bracket
7	1		Passenger Vent Cover (outer sensor)
8	1		Driver Side Vent Cover (outer sensor)
9	1		Winch Cover
10	2		Light Pod Plate
11	1		License Plate Bracket
12	1 Pr.		Sensor Plate (inner sensor)
13	2		Bumper Shell Hole Plug (large)
14	4		Bumper Shell Hole Plug (small)
15	2		Vent Cover Hole Plug

Item	Qty.	Part #	Description	Torque
16	38		1/4" x 3/4" Button Head Bolt	71 In. lbs.
17	10		1/4" Nylon Lock Nut	
18	2		3/8" x 1 1/4" Hex Bolt	26 ft. lbs.
19	2		3/8" Lock Washer	
20	2		3/8" Flat Washer	
21	2		3/8" Hex Nut	
22	2		M10-1.5 Hex Nut	
23	2		M10 Flat Washer	
24	2		M10 Lock Washer	
25	4	378312	1/2" T-Bolt	
26	6		1/2" x 1 1/2" Hex Bolt	64 ft. lbs.
27	10		1/2" x 1 1/2" Carriage Bolt	64 ft. lbs.
28	20		1/2" Flat Washer	
29	20		1/2" Lock Washer	
30	14		1/2" Hex Nut	

ILLUSTRATION #1



Tool Required:

- 7mm, 10mm, 15mm, 18mm, 7/16", 9/16" & 3/4" Sockets
- 7mm, 10mm, 15mm, 18mm, 7/16", 9/16" & 3/4" Wrenches
- T10 & T15 TORX Driver
- Slotted Blade Screw Driver
- 5/32" Hex Key
- Ratchet, Ratchet Extensions & Swivel Joint Adapter

Approximate Installation time: 2 hrs.

IMPORTANT INSTALLATION NOTES AND SUGGESTIONS

The pre-installed Mesh Winch and Vent Covers need to be removed using hand tools to slowly remove the bolts. Using an air assisted impact or ratchet will damage the bolt threads and the internal nut assembly in the bumper shell. Use of an appropriate anti-seize compound is highly recommended for re-installation, and tighten the bolts to the specified torque as overtightening could result in difficulty of future removal.

If you are replacing a bumper with front Park Assist, the sensor detection zone will be altered with use of this bumper replacement.

To maintain and care this product keep it clean and do not use abrasive cleaners or polish waxes. **Texture Painted Finish:** Mild liquid detergent may be used. **Polished Stainless & Semi-Gloss Painted Finishes:** We recommend using only non-abrasive automotive wax such as pure carnauba to avoid scratches and rust.

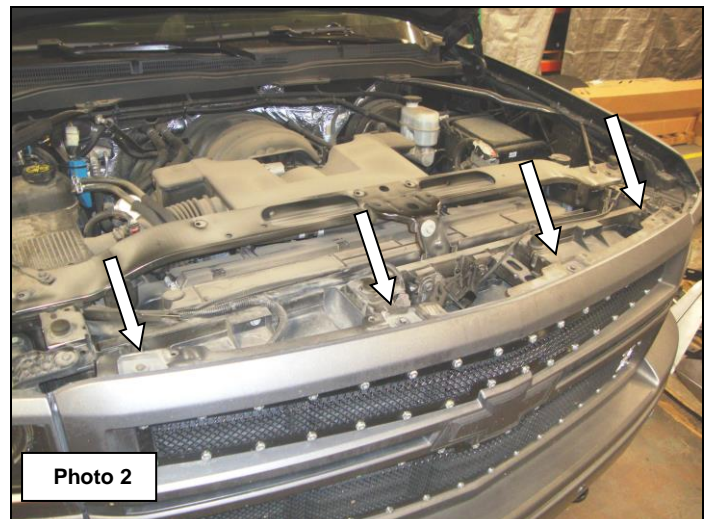
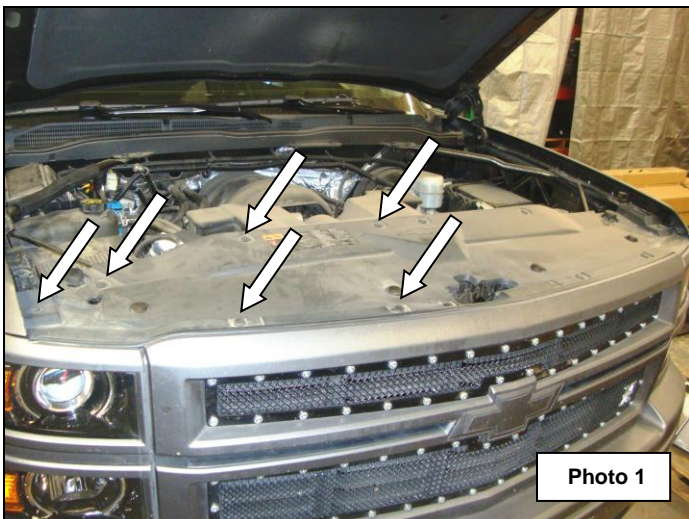
Read the installation instructions completely and verify that all of the parts listed are accounted for. If you have defective, missing or damaged parts or need assistance, please contact Go Rhino Products for fast, friendly customer service at: (888) 427-4466 or email: sales@gorhino.com

Factory Bumper Removal

Step-1 Open the hood and disconnect the vehicle battery or batteries. From under the vehicle disconnect the bumper wiring harness from the vehicle wiring harness.

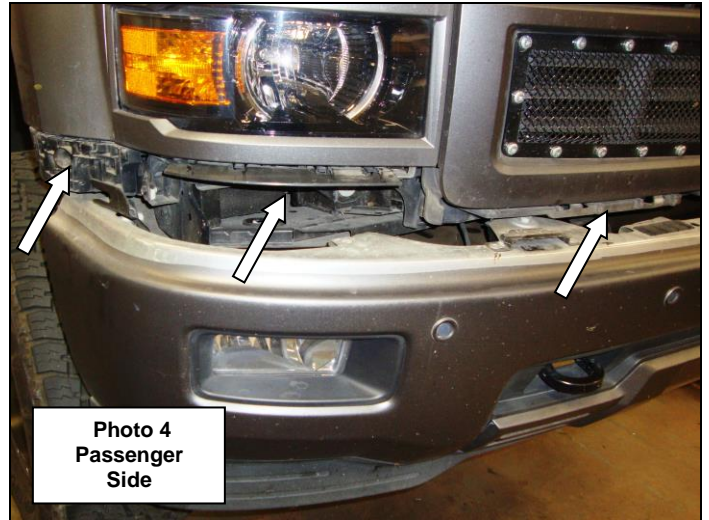
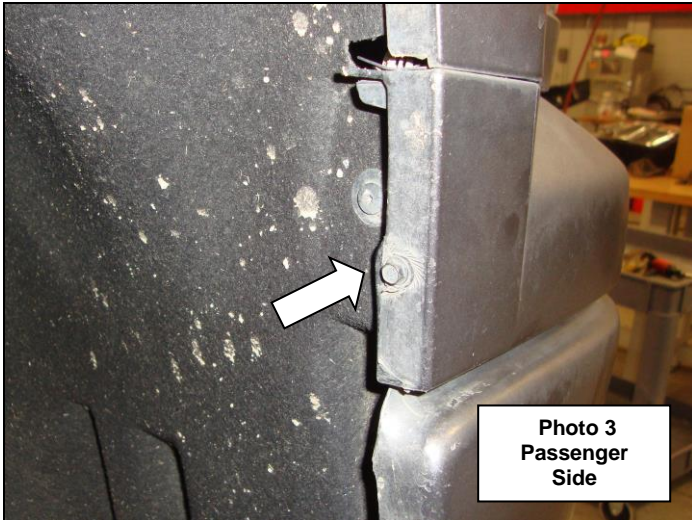
Step-2 Locate the (12) plastic push pins (6) per side securing the radiator cover. Using a flat blade screw driver, pull the head of the push pins up, remove push pins and lift radiator cover off. This will allow access to the bolts securing the top of the grille, (Photo 1).

Step-3 Remove the (4) screws (2) per side securing the top of the grille, (Photo 2).



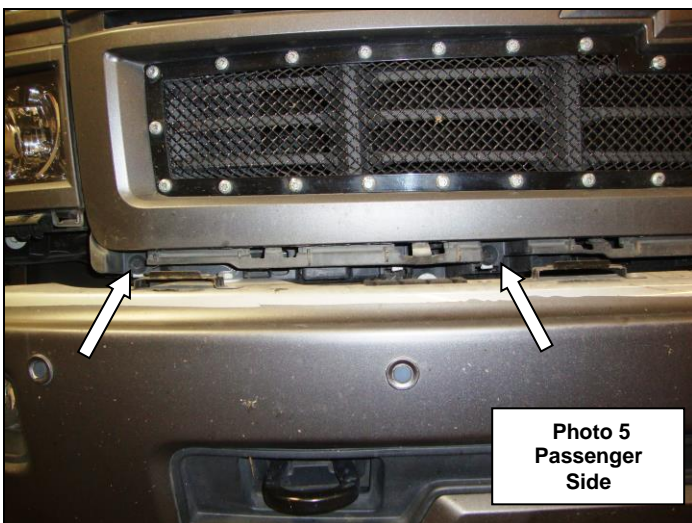
Step-4 Remove the screw (1) per side securing the bumper valance, (Photo 3).

Step-5 Working from side to side gently pull outward on the valance to unsnap the clips and remove the valance, (Photo 4).



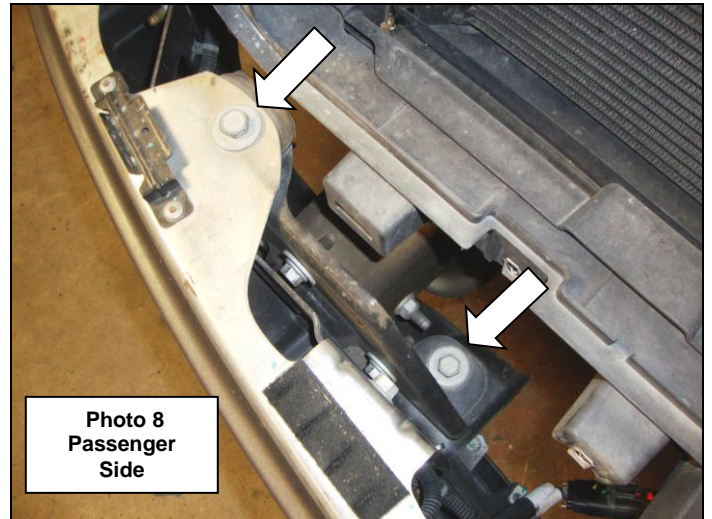
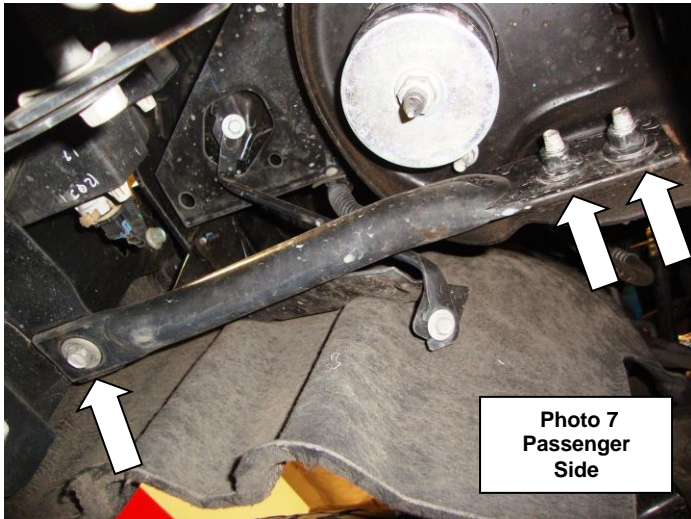
Step-6 Remove the (4) screws (2) per side securing the bottom of the grille, (Photo 5).

Step-7 Working from side to side gently pull outward on the grille to unsnap the clips and remove the grille, (Photo 6).



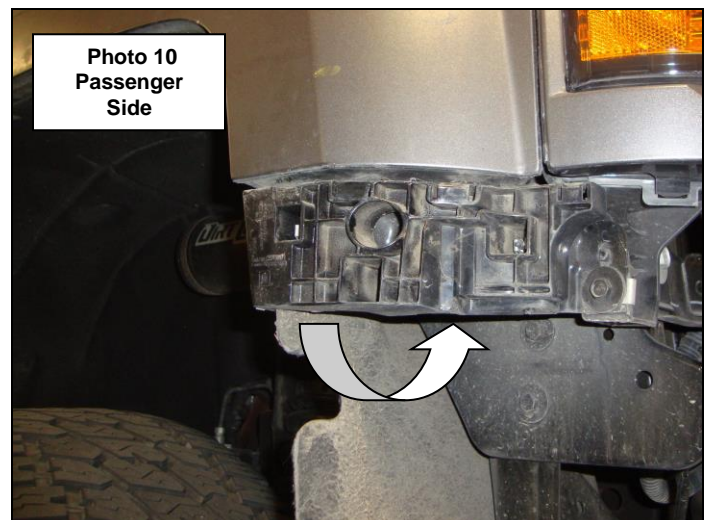
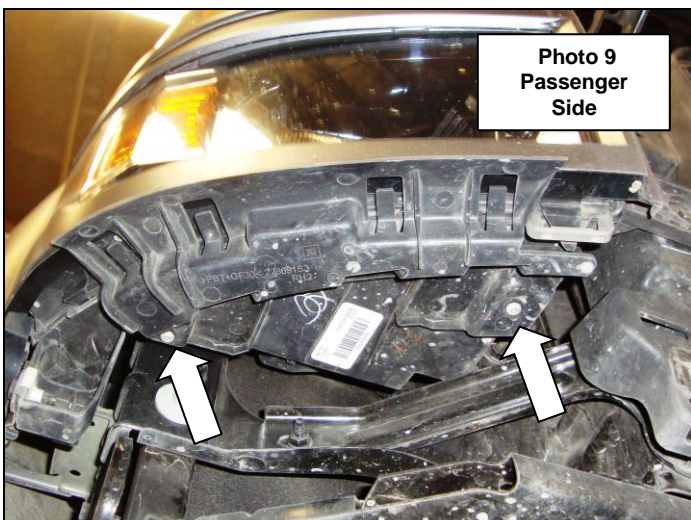
Step-8 On each side of the vehicle, remove (1) bolt securing the outer bumper support bar to the factory bumper and loosen the (2) bolts securing the opposite end of the support bar to the vehicle frame body mount bracket, (Photo 7). Retain the outer bolts as they will be used to secure the bumper support bracket to the bumper replacement shell.

Step-9 With assistance support the bumper, and remove the bolts (2) per side securing the bumper and bracket assembly to the frame, (Photo 8). Remove the bumper from the vehicle.



Step-10 On each side of the vehicle, remove (2) TORX screws securing bumper valance corner support bracket to the headlight, (Photo 9).

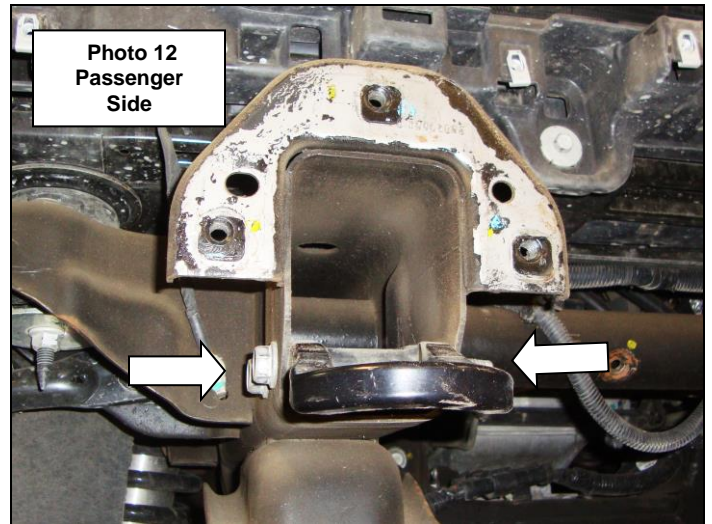
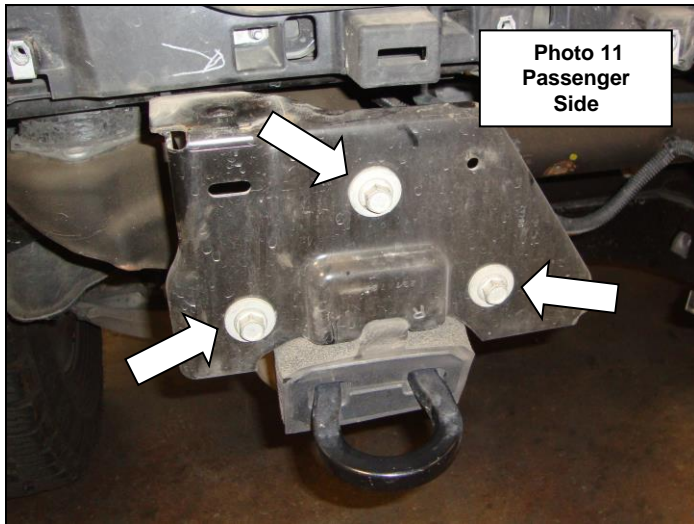
Step-11 On each side of the vehicle, remove (3) bolts from the back (not shown) securing the bumper valance side support bracket to the fender, (Photo 10).



Step-12 On each side of the vehicle, remove (3) bolts securing the bumper bracket to the frame, (Photo 11). Retain the bolts as (2) of the bolts will be used to secure the bumper replacement frame brackets to the vehicle.

Step-13 If equipped remove the nut and (2) bolts' securing the tow hooks to the frame, (Photo 12). Note: The tow hooks will not be reinstalled.

Step-14 Reinstall the factory grille.



BR5 Bumper Replacement Installation

Note: If your vehicle is not equipped with front Park Assist install the supplied plastic plugs in the holes in the replacement bumper and vent covers and proceed to step 9.

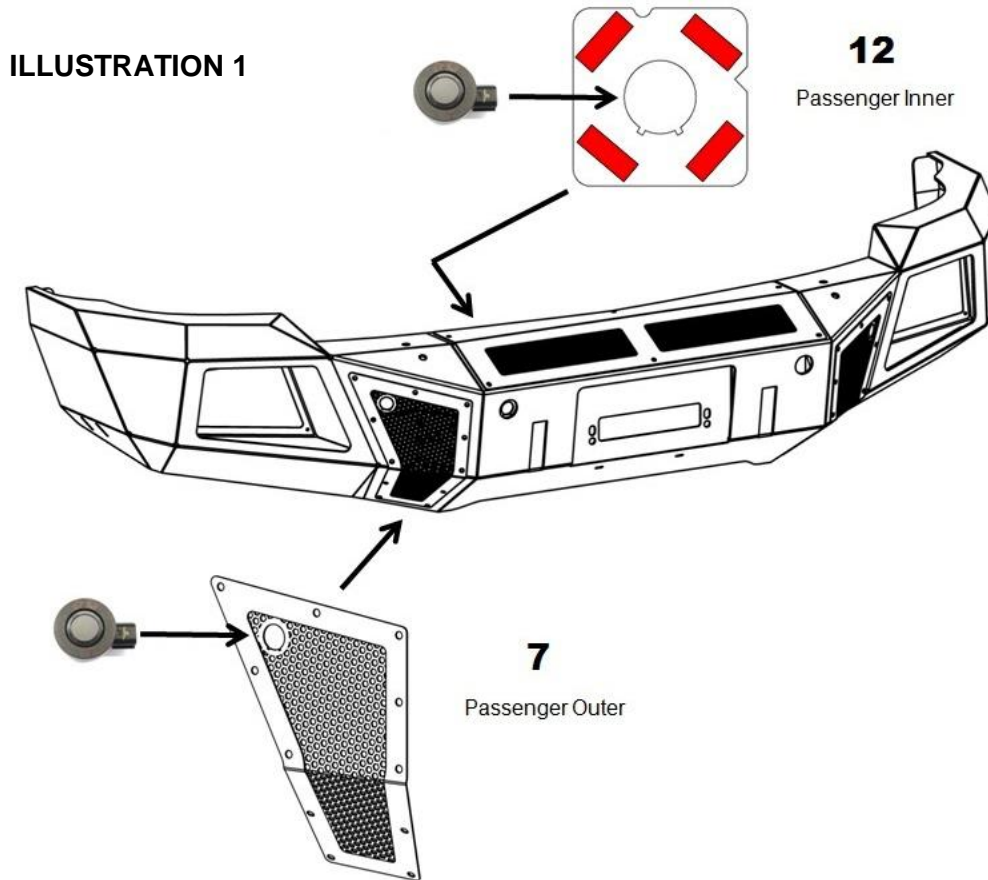
Step-1 If the vehicle is equipped with front Park Assist, disconnect the sensors from the factory bumper wiring harness and remove the wiring harness from the bumper.

Step-2 Remove each sensor from the plastic bezel by gently spreading the bezel tabs and pulling out on the back of the sensor. Note: Do not push on the front of the sensor as this may damage the sensor.

Step 3 Remove the sensor bezels from the factory bumper by depressing the tabs around the base and pushing the bezel out through the front of the bumper. Note: The sensors and bezels have to be positioned in the replacement bumper in the same location (inner and outer), (driver and passenger) as removed from the factory bumper.

Step-4 Install the inner sensor bezels and sensors in the supplied bezel plates, (Illustration 1). From the side with applied tape, line up the protrusions on the bezel with the profile in the bezel plate; push the bezel through the profile in the plate until the tabs around the base lock in position, then install the sensor in the bezel. Note: The U notch in the sensor plates designate the top, and the V notch on the side position toward the center of the vehicle.

Step-5 Install the outer sensor bezels and sensors in the driver and passenger vent covers, (Illustration 1). Line up the protrusions on the bezel with the profile in the vent cover; push the bezel through the profile in the vent cover until the tabs around the base lock in position, then install the sensor in the bezel. **Do not install the vent cover at this time.**



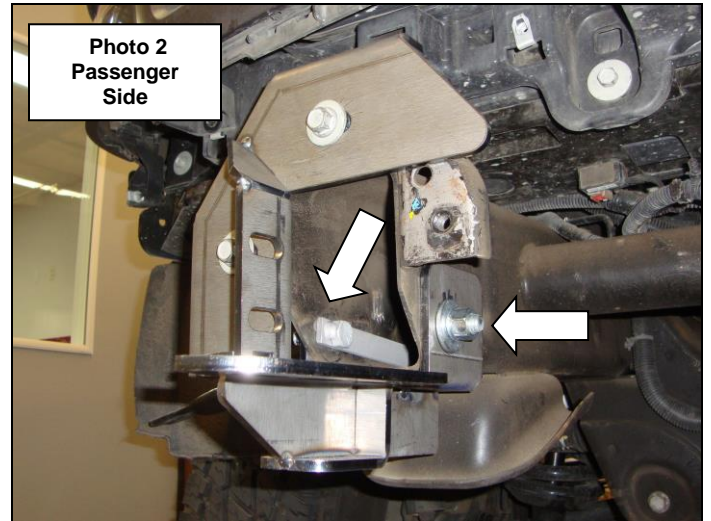
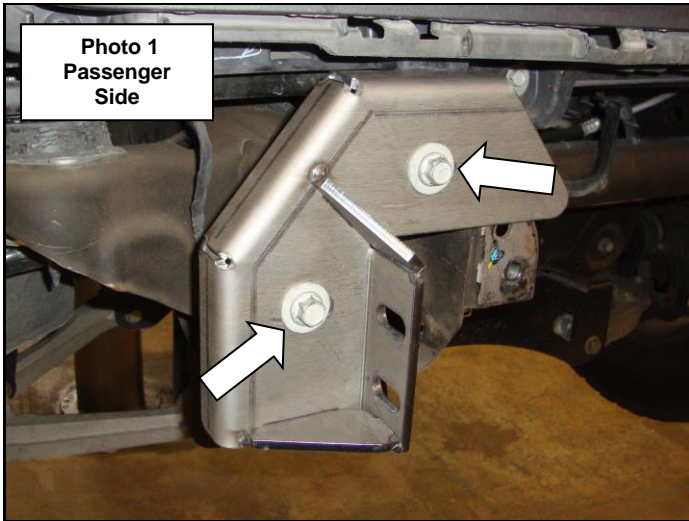
Step-6 Prepare the inside of the replacement bumper surface where the inner bezel plates will be mounted with Isopropyl alcohol. A clean, dry surface is required in order for tape to stick properly.

Step-7 Peel the backing off from the double sided tape to uncover the adhesive. From inside the replacement bumper position each bezel, sensor and bezel plate assembly, making sure the sensor bezel is centered in the hole provided in the replacement bumper.

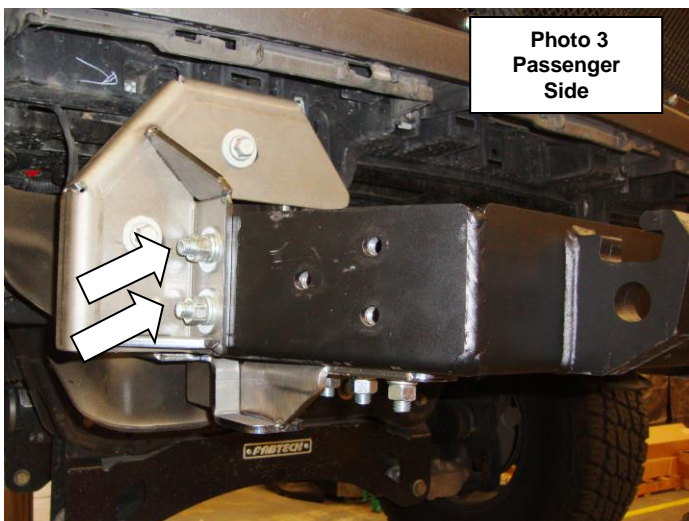
Step-8 Stick the assembly in place and apply firm pressure for about 30 seconds. The tape needs to bond with the mounting surface, and it needs pressure to do this. The bezel mounting plate will seem like it is stuck on, but continue pressing for at least 30 seconds. Note: At room temperature approximately 50% of ultimate bond strength will be achieved after 20 minutes, 90% after 24 hours and 100% after 72 hours.

Step-9 Position the bumper replacement passenger side frame bracket up to the end of the frame, align the holes in the frame bracket with the factory bumper bracket attachment holes in the frame and secure the frame bracket to the frame using (2) of the factory bumper bracket bolts (Photo 1). Leave the bolts loose for final adjustment.

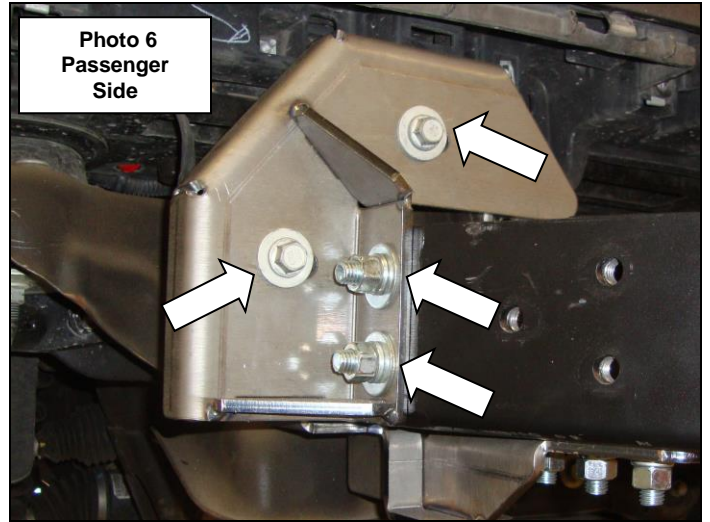
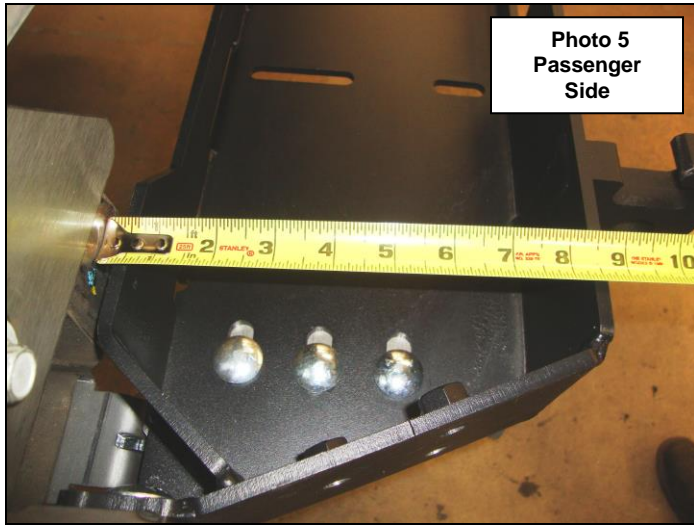
Step-10 Install the passenger side auxiliary bracket by positioning the bracket on the sides of the frame, align the holes in the auxiliary bracket with the tow hook bolt holes and secure the auxiliary bracket to the frame using (2) ½" T-Bolts, (2) ½" flat washers, (2) ½" lock washers and (2) ½" hex nuts, (Photo 2). Leave the nuts and T-Bolts loose for final adjustment. Repeat steps 1 & 2 to install the driver side frame and auxiliary bracket.



Step-11 Position the mounting plate/winch tray on top of the auxiliary brackets. Align the holes and secure the mounting plate/winch tray to each frame bracket using (2) ½" x 1 ½" carriage bolts, (2) ½" flat washers, (2) ½" lock washers and (2) ½" hex nuts, and to each auxiliary bracket using (3) ½" x 1 ½" carriage bolts, (3) ½" flat washers, (3) ½" lock washers and (3) ½" hex nut, (Photo 3 & 4).



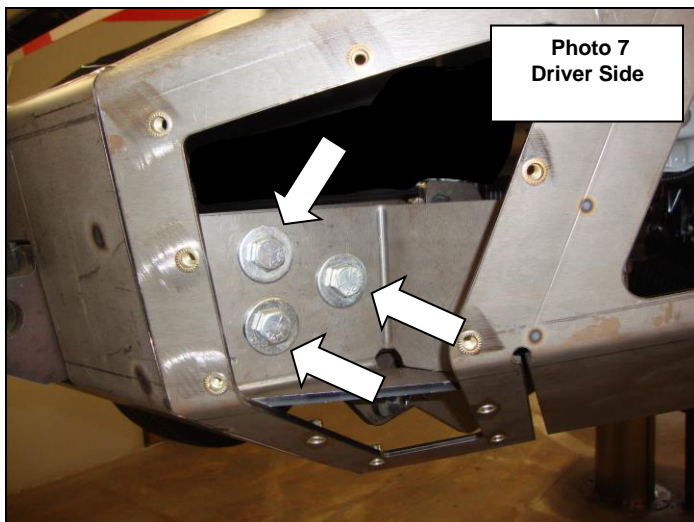
Step-12 Position the front edge of the mounting plate/winch tray 8 5/8" forward from the face of the frame, (Photo 5). Center and level the mounting plate/winch tray with the vehicle then tighten the factory bolts securing the frame brackets, and the supplied nuts and bolts securing the mounting plate/winch tray to the frame brackets, (Photo 6). Do not tighten the auxiliary bracket nuts and bolts at this time.



If you are installing a winch, place the winch in the winch tray and refer to the winch manufacturer's instructions for installation. Do not install the fairlead at this time.

Step-13 With assistance lift the bumper shell up to the vehicle, align the holes in the bumper shell brackets with the weld nuts on the mounting plate/winch tray and secure the bumper shell to each side of the mounting plate/winch tray using (3) 1/2" x 1 1/2" hex bolts, (3) 1/2" lock washers and (3) 1/2" flat washers, (Photo 7). Leave the bolts loose for final adjustment.

Step-14 Align the holes and attach each factory bumper support bar to each of the bumper shell support brackets using the factory M10 bolt, (1) M10 flat washer, (1) M10 lock washer and (1) M10 hex nut, (Photo 8).



Step-15 With assistance, adjust and hold the bumper shell visual alignment position, then tighten all factory and supplied nuts and bolts. Note: It may be necessary to loosen the nuts and bolts securing the mounting plate/winch tray and brackets.

If installing a winch, install the roller fairlead to the bumper shell at this time. Refer to the winch manufacturer's instructions for installation. If installing an optional light bar, install the light bar to the bumper replacement at this time. Refer to the light bar instructions for installation.

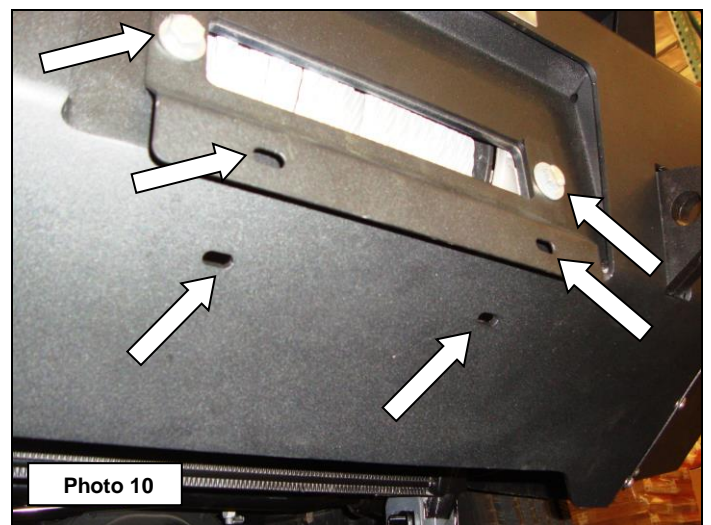
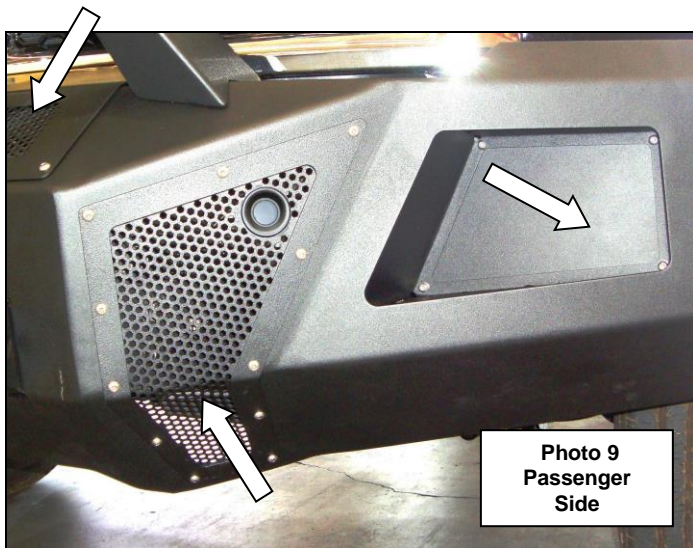
Step-16 Install the driver and passenger side front vent covers and winch cover to the bumper shell using the supplied $\frac{1}{4}$ " x $\frac{3}{4}$ " button head bolts, (Photo 9). **Note:** Do not over tighten bolts, reference tightening torque (71 in. lbs.).

If your vehicle is equipped with front park assist reconnect the factory bumper wiring harness to the sensors and to the vehicle wiring harness prior to installing the winch cover.

Step-17 Install the flush mount light pods to the bumper shell using (4) $\frac{1}{4}$ " x $\frac{3}{4}$ " button head bolts and (4) $\frac{1}{4}$ " nylon lock nuts, (Photo 9).

Step-18 Re-connect the vehicle battery or batteries.

If your state law requires a front license plate, attach the license plate bracket to the holes in the face of the bumper shell, using the supplied $\frac{3}{8}$ " bolts, washers and nuts, and the license plate to the (2) obround holes in the license plate bracket using the supplied $\frac{1}{4}$ " bolts and nuts, (Photo 10).



If installing a winch, attach the license plate directly to the (2) obround holes in the lower face of the bumper shell using the supplied $\frac{1}{4}$ " bolts and nuts, (Photo 10).

Remember to check and retighten all factory and supplied nuts and bolts periodically.