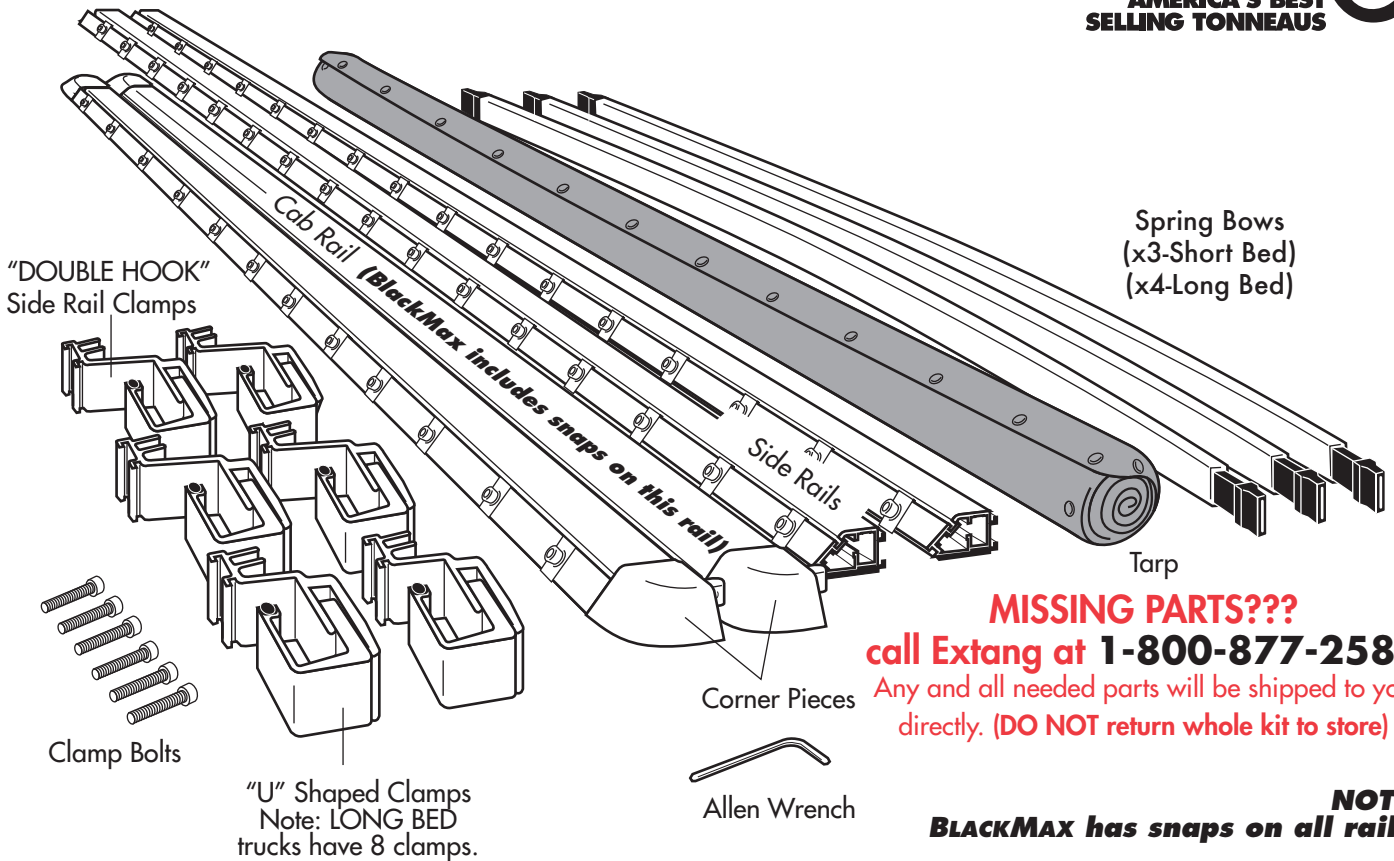


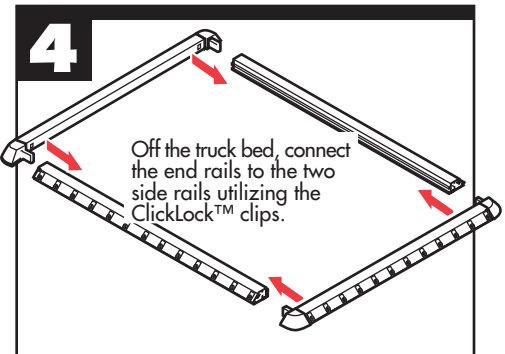
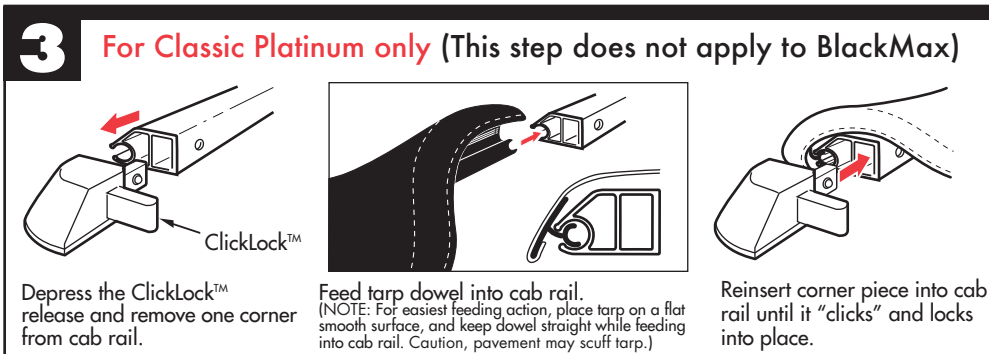
INSTALLATION SHEET

CLASSIC
PLATINUM & BLACKMAX™

extang
 AMERICA'S BEST
 SELLING TONNEAUS



PARTS INCLUDED IN YOUR KIT. You may want to lay them out in this manner for accessibility.



Extang Corporation
 5400 S. State Road
 Ann Arbor, MI 48108
 734 677-0444, Fax: 734 677-8409

0213

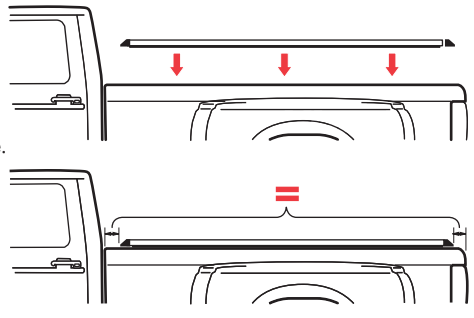
Register your warranty at:
extang.com

Item No. 0016-1403 RH Printed in U.S.A.

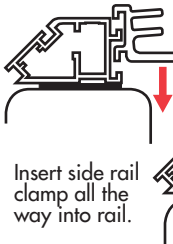
5

Place the rail assembly over the side of the truck box. Center rails evenly between cab and tailgate.

(NOTE: Some applications have rubber risers (rectangular rubber pads.) A riser must go toward tailgate. Some applications will have a riser at both ends, (most have no riser).

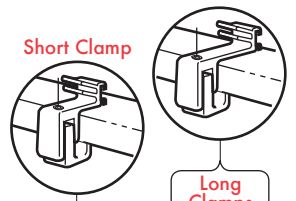
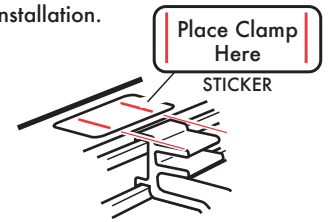


6

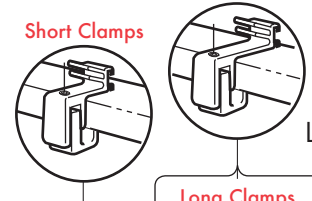


Insert side rail clamp all the way into rail.

Clamp Spacing (Same for each side)
See the stickers located on each side rail for clamp position, or refer to the dimensions given below.
Note: Remove stickers after installation.



SHORTBED (3 clamps)



LONGBED (4 clamps)

Longer Clamps

Some trucks use different sizes of clamps to fit curved sidewalls. Longer clamps go in the forwardmost (Cab) positions while the shorter clamps hold the rails at the rear (tailgate) end.

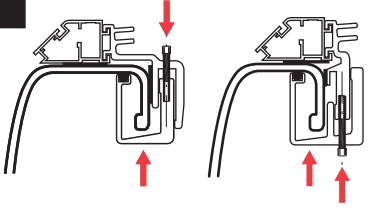
FOR INSTALLATION IN THE FOLLOWING TRUCK MODELS:

- Ford HD Long-Bed
- Ford HD Short-Bed

7

STANDARD CLAMP

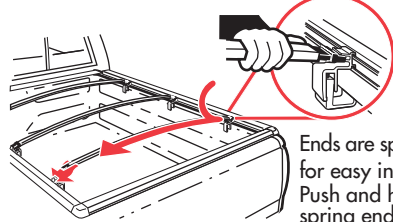
IMPORT CLAMP



Attach "U" clamp to side rail clamp with allen bolt. Insert side rail clamp all the way into rail.

8

Insert bow onto top or bottom peg.
(Top peg for performance, Bottom for good looks.)



Ends are spring loaded for easy installation. Push and hold on spring end and let the other end slide on with the spring action.



SPECIAL FEATURE: Two pegs offer two height adjustments.

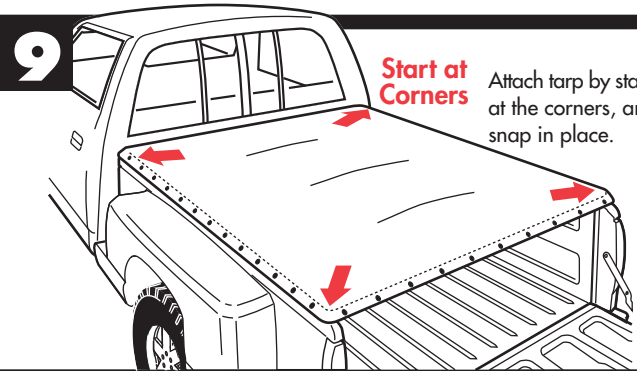


Do Not Place Between the Pegs

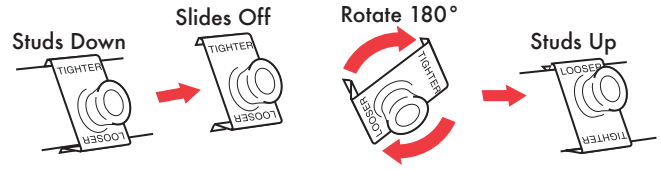
9

Start at Corners

Attach tarp by starting at the corners, and snap in place.



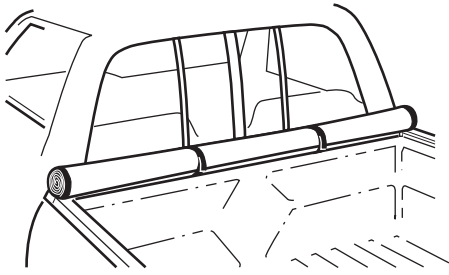
SPECIAL FEATURE Weather-adjustable Snaps



SUMMER SETTING
Takes up slack in tarp caused by warm weather.

WINTER SETTING
Allows more slack in tarp for cold temperatures.

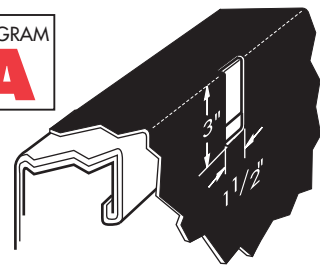
For an OVER-THE-RAIL Bedliner



EASY USE OF TRUCK BED

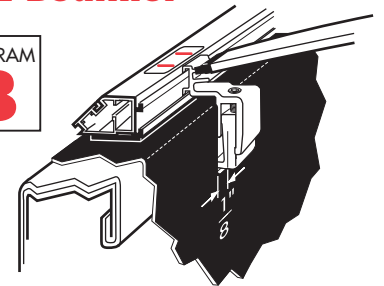
Tarp may be rolled up and secured with Velcro® for bulk hauling

DIAGRAM **A**



For each clamp mark on your bedliner a 1-1/2" x 3" hole as shown above. Remove clamp. Cut holes in bedliner. Reinsert side rail clamp. Return to step 6.

DIAGRAM **B**



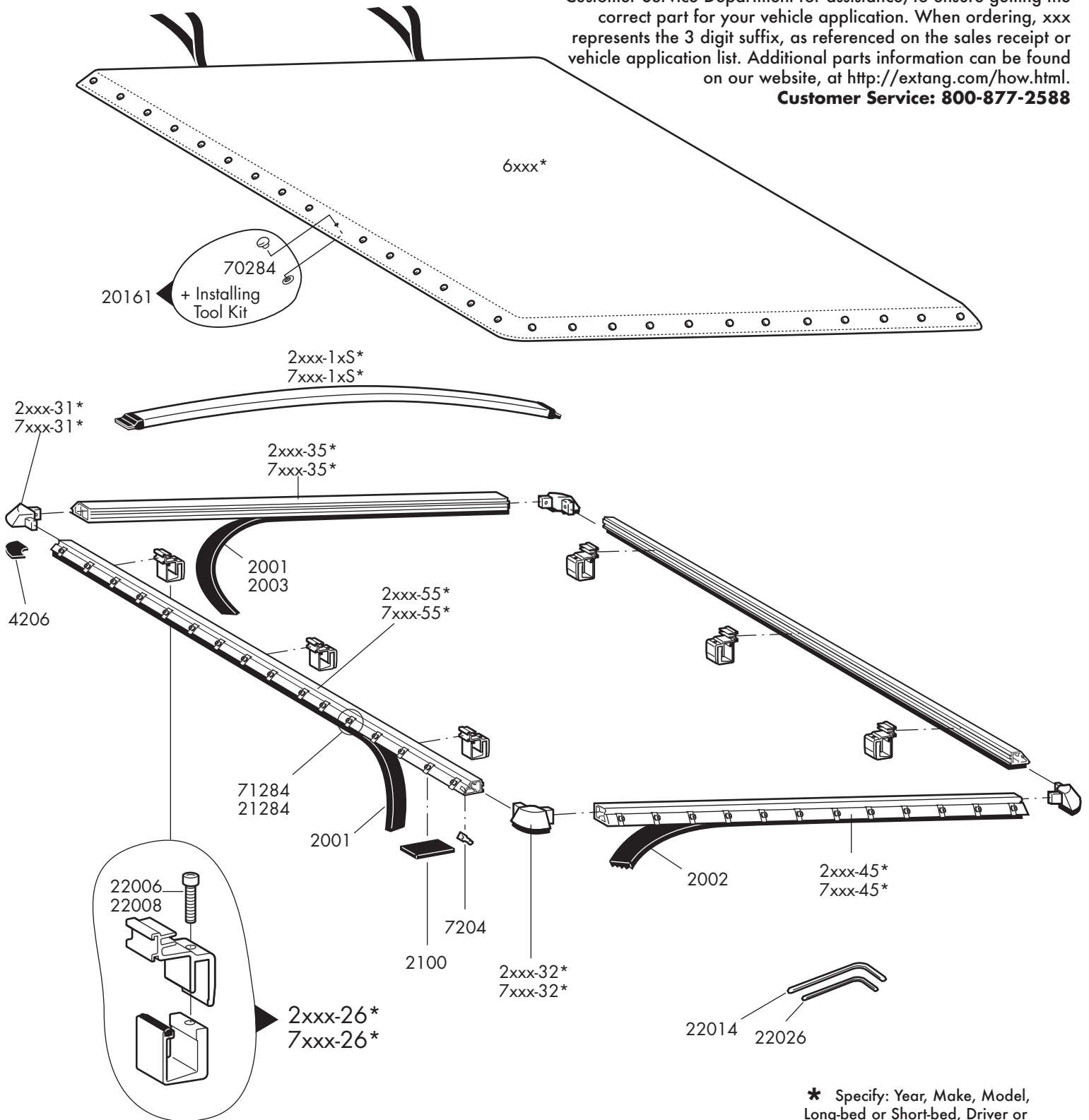
Side rail clamped to bed with bow attached.



See Part Descriptions on Back

NOTE: To order replacement parts, it's best to contact our Customer Service Department for assistance, to ensure getting the correct part for your vehicle application. When ordering, xxx represents the 3 digit suffix, as referenced on the sales receipt or vehicle application list. Additional parts information can be found on our website, at <http://extang.com/how.html>.

Customer Service: 800-877-2588



* Specify: Year, Make, Model, Long-bed or Short-bed, Driver or Passenger side.

NOTE: To order, xxx represents the 3-digit application # (vehicle type) following the 1- or 2-digit prefix, as referenced on the vehicle application list or sales receipt. Or call our Customer Service Department at 1-800-877-2588 for assistance.

Classic Platinum

- 6xxx* Black Replacement Tarp
 - 70284 Replacement Tarp Snaps (4)
 - 20161 Tarp Snap Tool Kit (w/4 Tarp Snaps)

- 7xxx-10S* Cab Bow w/Bow Ends (1)
- 7xxx-11S* Center Bow w/Bow Ends (1)
- 7xxx-12S* Cab Center Bow w/Bow Ends (L/B only) (1)
- 7xxx-13S* Tail Center Bow w/Bow Ends (L/B only) (1)
- 7xxx-14S* Tail Bow w/Bow Ends (1)
- 7xxx-26* Double-Hook Clamps (set of 2)
 - 22006 Clamp Bolt 1/4-20 x 1" SHCS (1)
 - 22008 Clamp Bolt 1/4-20 x 1 1/2" SHCS (1)

- 7xxx-31* Front Replacement Corners (2)

- 7xxx-32* Rear Replacement Corners (2)
 - 4206 Replacement Corner Pads (4)

- 7xxx-35* Cab Rail Replacement Assembly
 - 2001 3/16" Black Cab/Side Rail Foam (30' rl.)
 - 2003 3/8" Gray Cab Rail Foam (8' rl.)

- 7xxx-45* Tailgate Rail Replacement Assembly
 - 2002 Tailgate Rail Foam (6' rl.)

- 7xxx-55* Side Rail Replacement Assembly
 - 2001 3/16" Black Cab/Side Rail Foam (30' rl.)
 - 2100 Side Rail Rubber Risers (2)
 - 7204 Snap Stopper (4)
 - 71284 Metal Rail Snaps (4)

BlackMax

- 1xxx* Black Replacement Tarp

- 1xxx-92* Bright White Replacement Tarp
 - 70284 Replacement Tarp Snaps (4)
 - 20161 Tarp Snap Tool Kit (w/4 Tarp Snaps)

- 2xxx-10S* Cab Bow w/Bow Ends (1)
- 2xxx-11S* Center Bow w/Bow Ends (1)
- 2xxx-12S* Cab Center Bow w/Bow Ends (L/B only) (1)
- 2xxx-13S* Tail Center Bow w/Bow Ends (L/B only) (1)
- 2xxx-14S* Tail Bow w/Bow Ends (1)

- 2xxx-26* Double-Hook Clamps (set of 2)
 - 22006 Clamp Bolt 1/4-20 x 1" SHCS (1)
 - 22008 Clamp Bolt 1/4-20 x 1 1/2" SHCS (1)

- 2xxx-31* Front Replacement Corners (2)

- 2xxx-32* Rear Replacement Corners (2)
 - 4206 Replacement Corner Pads (4)

- 2xxx-35* Cab Rail Replacement Assembly
 - 2001 3/16" Black Cab/Side Rail Foam (30' rl.)
 - 2003 3/8" Gray Cab Rail Foam (30' rl.)

- 2xxx-45* Tailgate Rail Replacement Assembly
 - 2002 Tailgate Rail Foam (6' rl.)

- 2xxx-55* Side Rail Replacement Assembly
 - 2001 3/16" Black Cab/Side Rail Foam (30' rl.)
 - 2100 Side Rail Rubber Risers (2)
 - 7204 Snap Stopper (4)
 - 21284 BlackMax Rail Snaps (4)

Miscellaneous

- 22014** 3/16" Hex Key
- 22026** 3/32" Hex Key

* Specify: Year, Make, Model, Long-bed or Short-bed, Driver or Passenger side.