

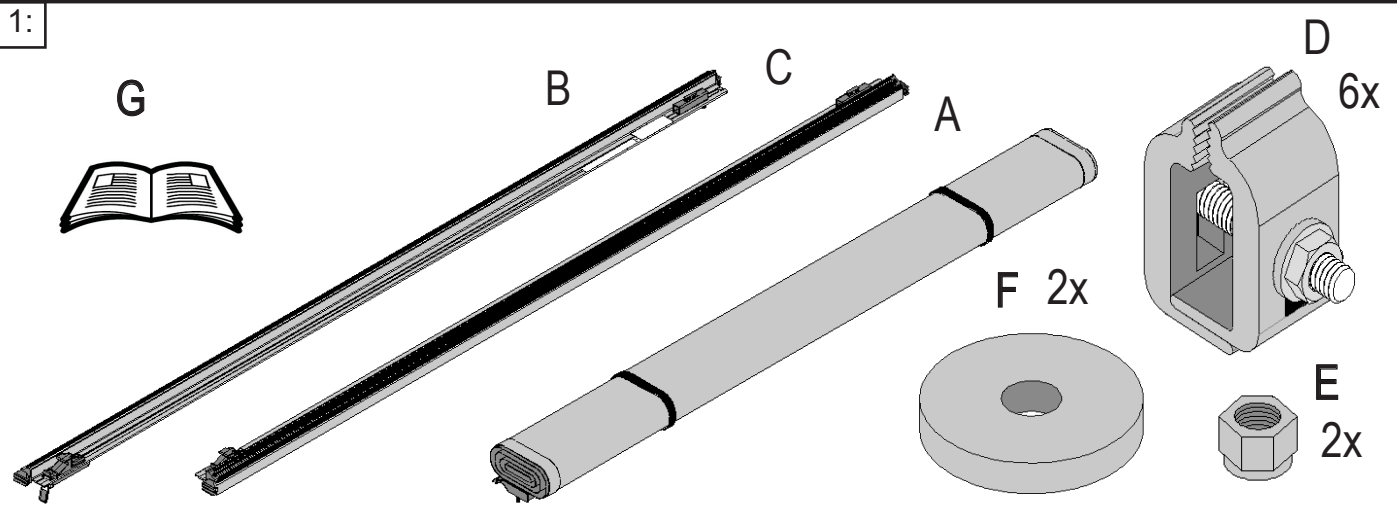
LT COVER MANUAL



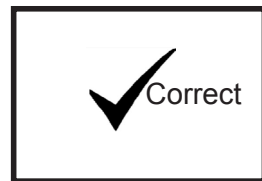
SOFT ROLL-UP TONNEAU COVER

P/N 1117921 Rev P1.

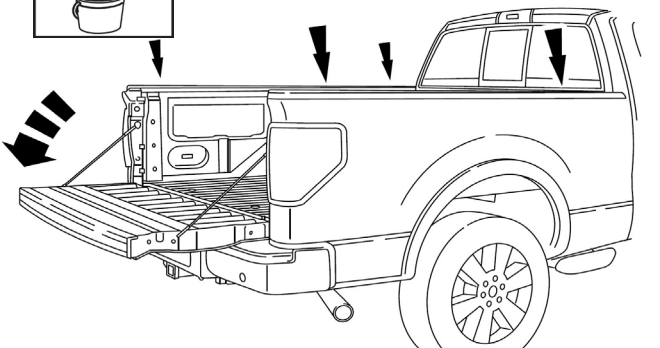
Components



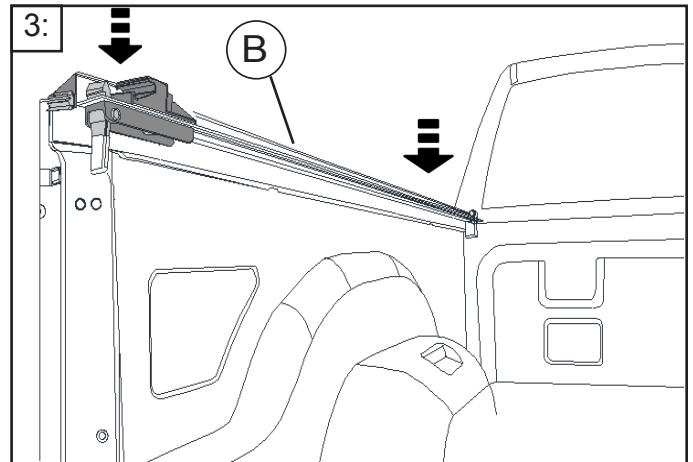
Tools Required



2:

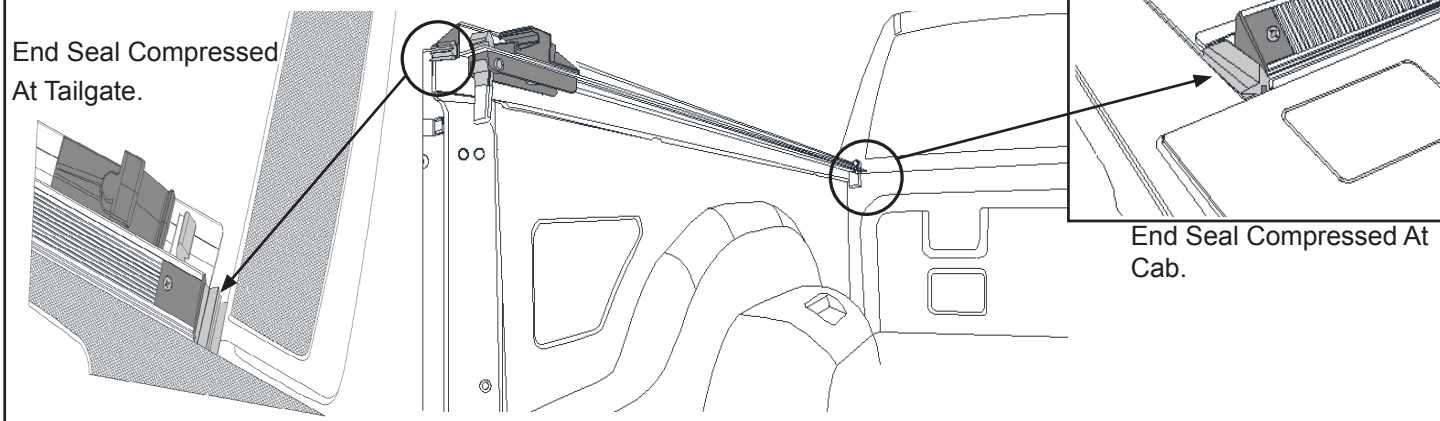


3:

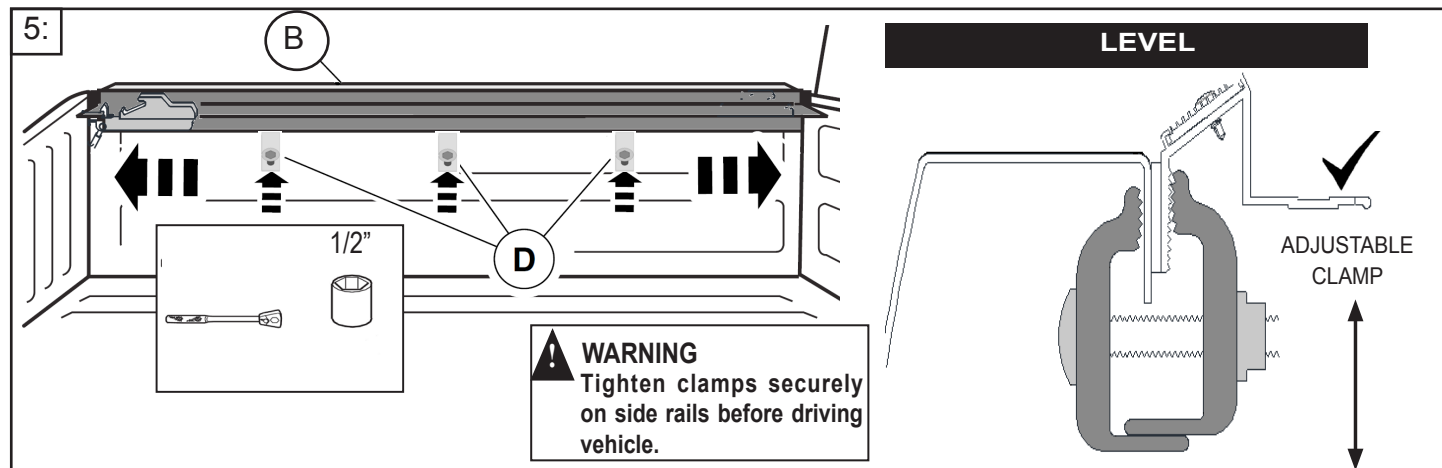


4: With Tailgate Closed, Position Side Rail Compressing End Seals Equally Between Cab and Tailgate.

End Seal Compressed At Tailgate.



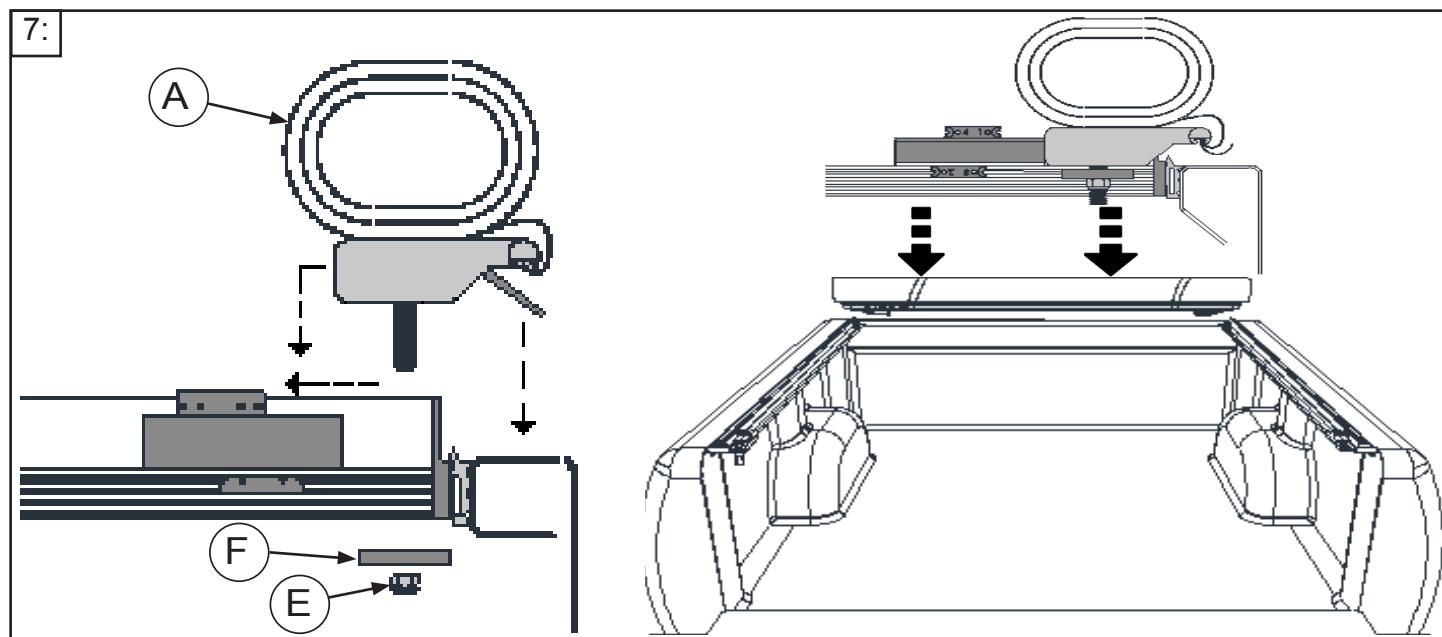
5:



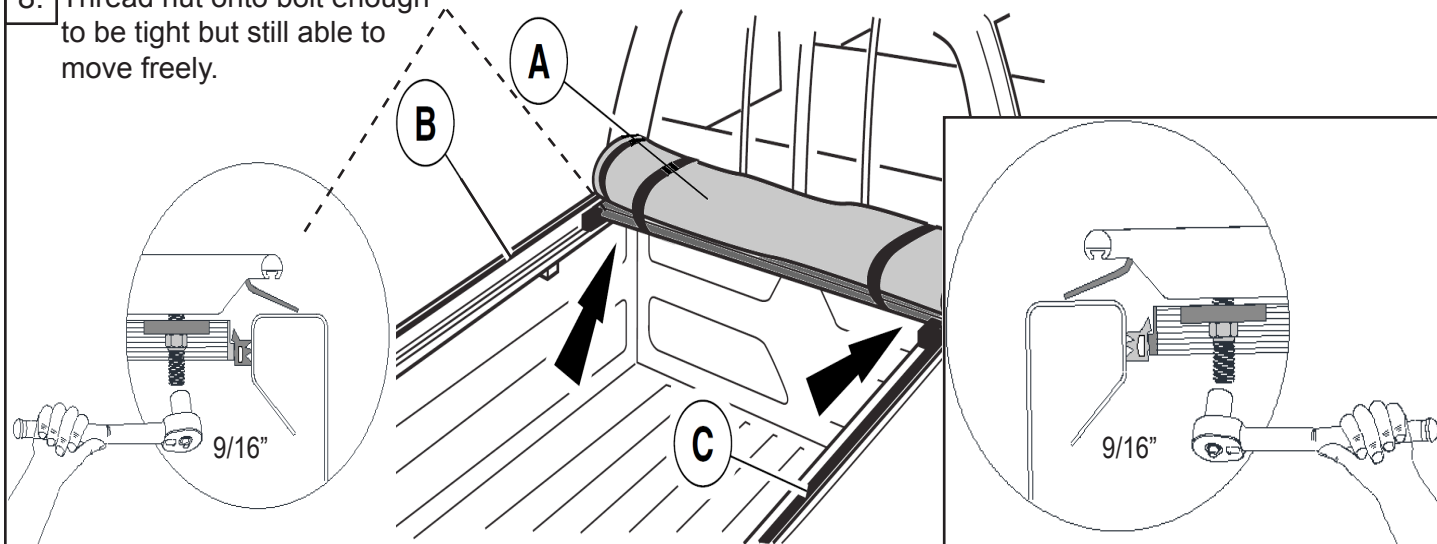
6:

Repeat steps 3-5 on passenger side for item C. Proceed to step 7 when complete.

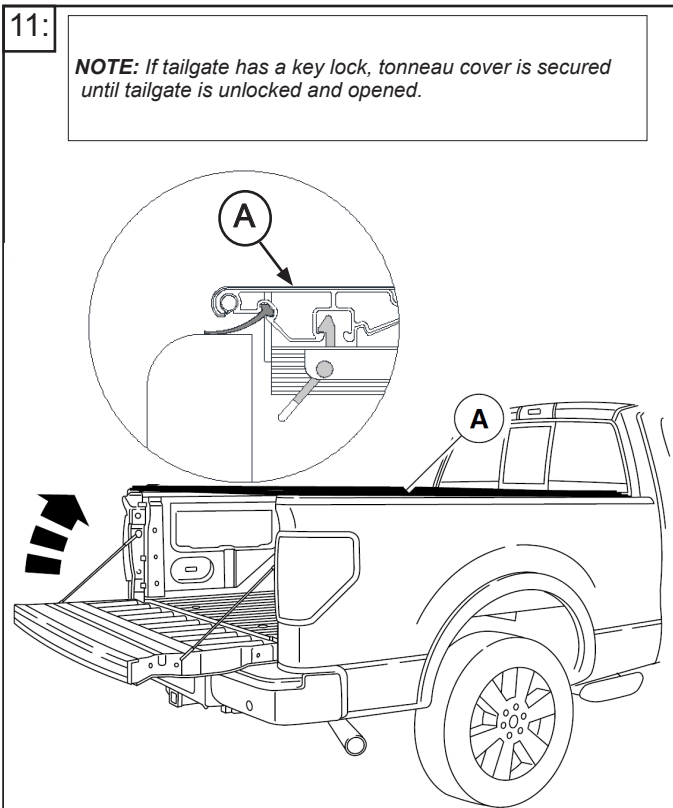
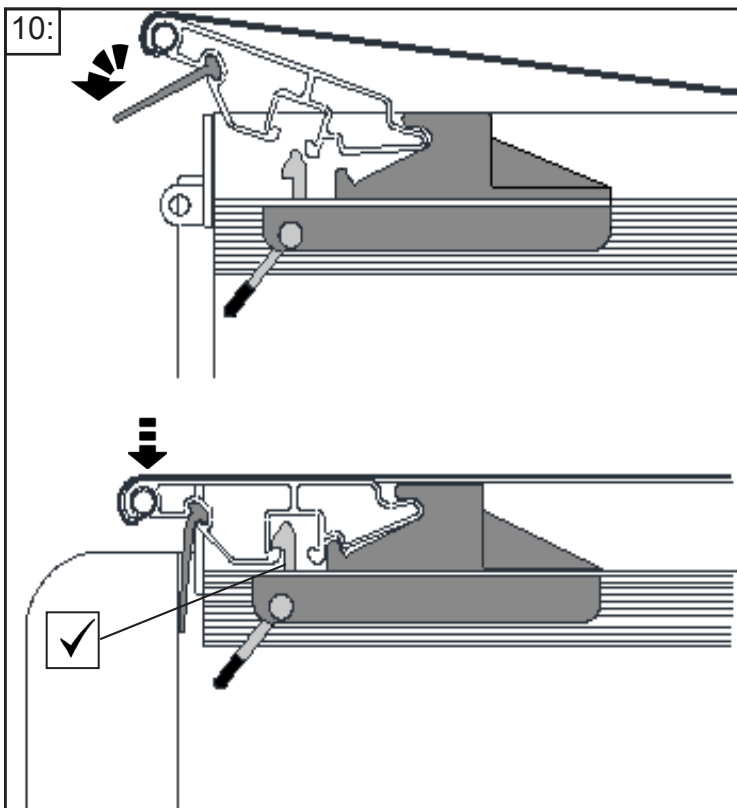
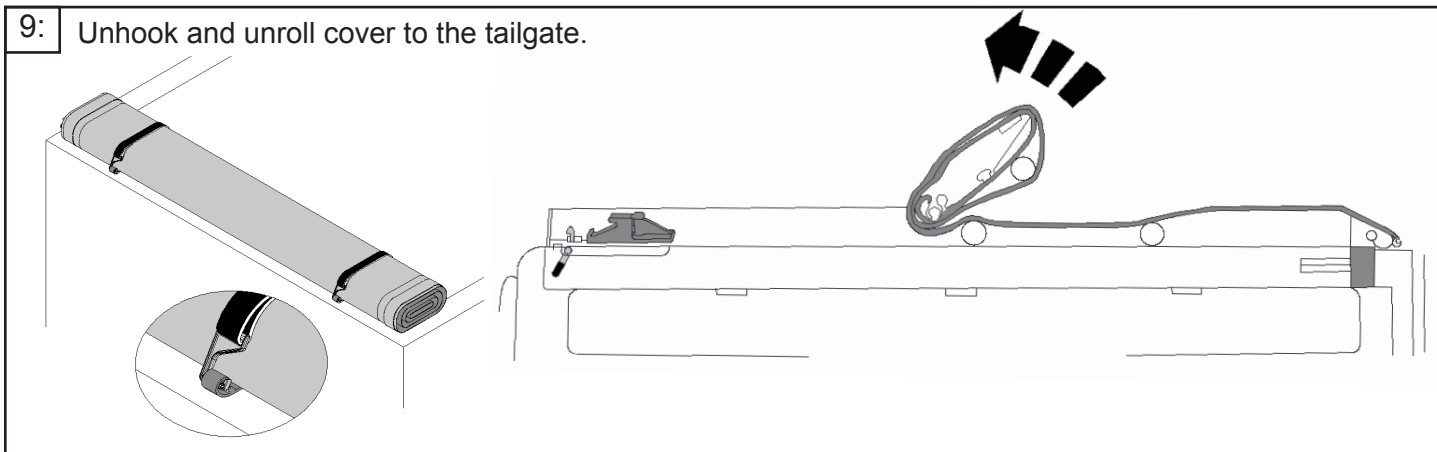
7:

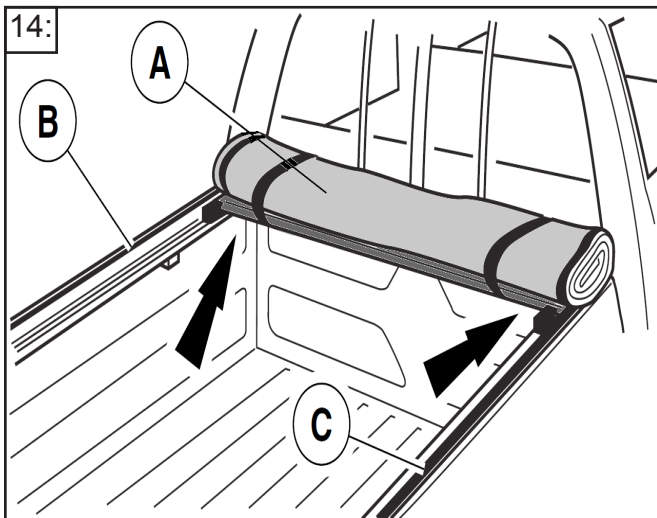
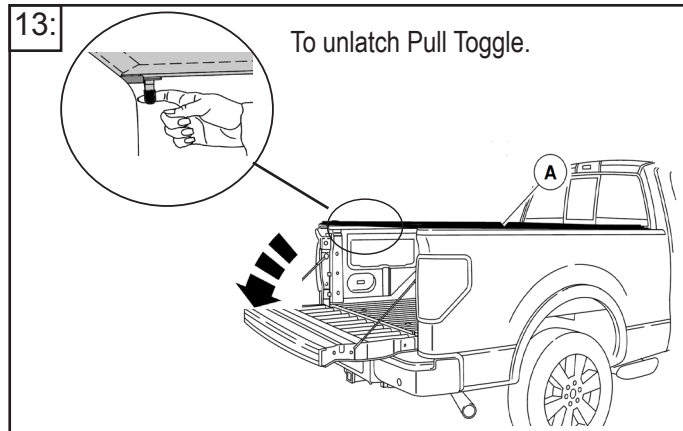
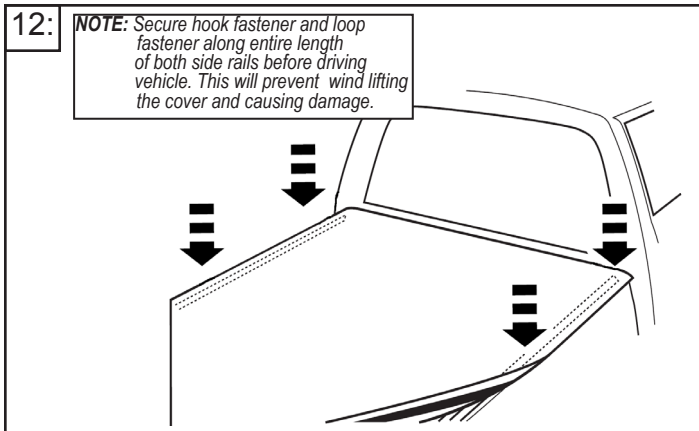


8: Thread nut onto bolt enough to be tight but still able to move freely.



9: Unhook and unroll cover to the tailgate.





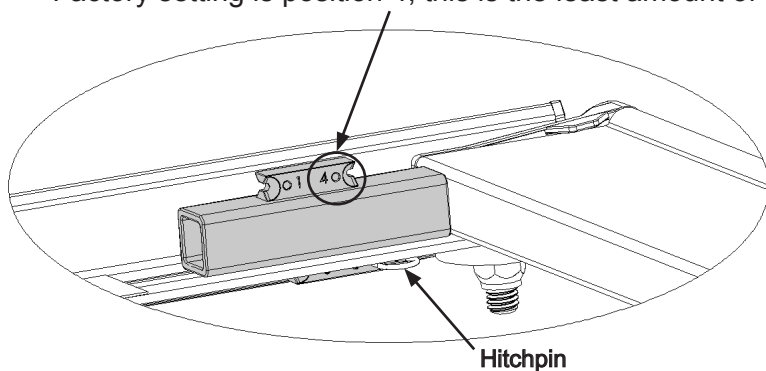
CAUTION

ROLL COVER TIGHT AND SECURE BOTH SAFETY STRAPS.
DO NOT STOW COVER AGAINST CAB WINDOW.

To stow cover open roll cover to the front. Secure both hooks
DO NOT stow cover against cab window.

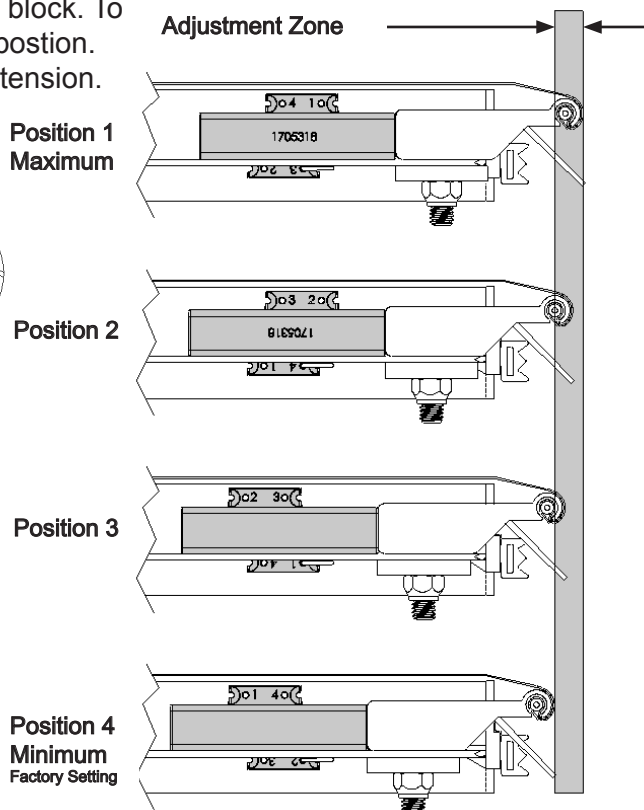
COVER TENSION ADJUSTMENT

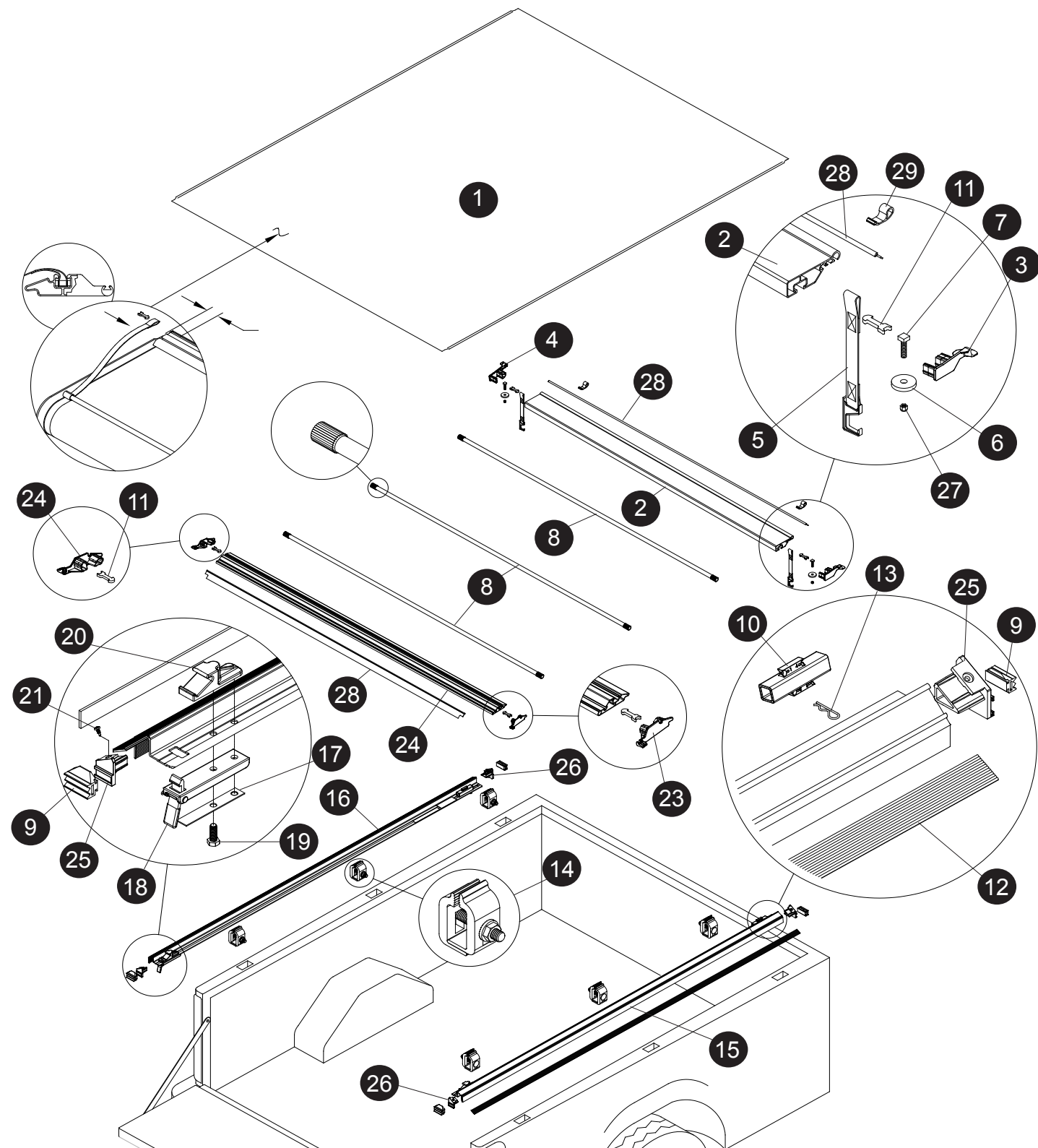
- 15: Cover tension is controlled by a four position adjustable block. To adjust tension pull hitchpin and rotate block to desired position. Factory setting is position 4, this is the least amount of tension.



Setting cover tension

1. Set cover tension during warmest part of the day.
2. Roll cover up to adjustable block.
3. Pull Hitchpin and rotate blocks to the next position needed. Replace Hitchpin. **(Driver and passenger blocks must always be in the same position.)**
4. Close cover and re-check adjustment. Repeat until satisfactory tension has been achieved.





REPLACEMENT PARTS

1	*	Replacement Cover	12	*	Hook Strip	23	1705404	Rear Header End Plug
2	*	Front Header	13	1703332	Hitch Pin	24	*	Rear Header
3	1705310	Front Header End Plugs	14	1705234	Clamp Assembly (6)	25	1705306	Side Rail End Plug
4	1705311	Front Header End Plugs	15	*	Side Rail, Passenger's Side	26	1705305	Side Rail End Plug
5	*	Safety Strap	16	*	Side Rail, Driver's Side	27	1701580	Hex Nut Full Nylon Lock
6	1115745	Plastic Washer	17	1114773	Flat Spring	28	*	Extruded Header Seal
7	1703455	Square Head Cap Screw	18	1704213	Latch Assembled	29	1705192	Retainer Loop
8	*	Bow Assembly	19	1703455	Cap Screw			
9	1705284	Rail End Seal	20	1705336	Header Stop			
10	1705318	Tension Adjustment Block	21	1703690	Self Drill Screw			
11	1705364	Header Insert Safety Clip	22	1705405	Rear Header End Plug			

* Please specify length or make and model of vehicle.



WARNING

Tighten clamps securely on side rails before driving vehicle, to prevent cover from blowing off.

1. Do not place objects on or against cover or framework.
2. Do not tie cargo to cover framework.
3. Never allow children or pets to occupy pickup box while cover is closed.
4. Cover is not airtight. Special care is required to keep cargo clean and dry.
5. Fabric cover won't prevent theft of contents inside truck box.
6. Cover must be rolled fully open and secured with safety straps when towing vehicle backwards.
7. Opened cover must be secured with both safety straps when driving vehicle.

OWNER/USER RESPONSIBILITIES

It is the responsibility of the owner/user to read this manual and comply with the operating procedures. The owner/user is also responsible for inspecting their tonneau cover system, and for having parts repaired or replaced when worn or damaged.

Failure to follow safety instructions and warning labels could result in failure of your cover system and/or personal injury.

MESSAGES TO INSTALLER

- Always wear safety glasses and/or other necessary protective equipment when installing your tonneau cover system.
- These instructions are complete for most pickup models. Additional instructions are included, if required for your pickup. Please read entire manual before installing your tonneau cover system.

COVER MAINTENANCE

Never use silicon, petroleum, or citrus based products on your tonneau cover.

Vinyl cover can be hand washed with mild soap and water or cleaned in a car wash. Thoroughly rinse cover to remove any soap residue. Cover can be treated with any vinyl protectant made for tonneau covers.