

## INSTALLATION INSTRUCTIONS

### 23289 Winch Bumper (B-PS)

### 53233 PULL PRO

### 04 - 08 Ford Pick Up F-Series New Body Style

Parts List:		(1) 53233 Hardware kit includes:	
<b>QTY</b>		7 (6) 1/2 x 1 1/4" Hex head bolt	17 (2) 1/4" Lock Nut
1 (1) Pull Pro		8 (2) 1/2 x 3" Hex head bolt	18 (2) M12 Nuts
2 (1) Tubular Bracket		9 (18) 1/2" Flat Washer	19 (2) 1/2" Flat washer
3 (2) Main Bracket		10 (12) 1/2" Lock nut	20 (2) 1/2 x 2" Hex head bolt
4a (2) 2004 - 2005 Auxiliary Bracket		11 (2) 3/8" Flat Washer	<b>Modular Pull Pro includes extra:</b> ( 1 ) Brushguard set ( 2 ) Flat rubber gaskets ( 4 ) Button allen head bolts ( 4 ) Flat washer ( 4 ) Lock nut
4b (2) 2006 Auxiliary Bracket		12 (2) 3/8" Lock Nut	
5a (2) 1/2" Special Flat Washer		13 (1) Wire guide for 1/2" bolt.	
5b (4) Plate		14 (2) 3/8 x 1 1/2" Hex head bolt	
6 (4) 1/2" Tab bolt		15 (2) 1/4 x 1" Hex head bolt	
7 (1) Central channel/tube		16 (2) 1/4" Flat Washer	

#### Tools required:

Socket 3/4" (19mm)	Socket 7/16 (11mm)	Ratchet	5/32" Allen wrench
Socket 9/16" (14mm)	Wrench 3/4" (19mm)	Extension ratchet	

#### Instructions:

**Approximated installation time: 60 min.**

1. Before beginning the installation, read the instructions thoroughly and completely. If any of the items listed above are missing, please do not proceed with installation. Call your distributor immediately to obtain the necessary items.

**NOTE:** Central channel/tube is already installed in the Pull Pro, if you install a winch higher than 11" you must remove the central/tube channel.

2. Remove the front tow hook bolt and loosen the rear bolt so that the tow hook slides off the bolt as shown in Picture 1. Repeat on the opposite side. Keeping the rear bolt threaded will make the installation of the main mounting brackets much easier. If your vehicle is not equipped with tow hooks, proceed directly to step 4.

3. Place the main mounting bracket between the tow hook and the vehicle frame and secure the bolts. See Picture 2. Leave loose.

4. If your vehicle is NOT equipped with tow hooks it will be necessary to cut off a 3/8" x 2 1/2" hole into the vehicles lower bumper valance to pass through the main mounting brackets. Their must be a space measuring 28 1/2" between the inside edge of each hole. See Pictures 1 and 3 for reference. Professional installation is recommended.

5. Locate the existing holes in the frame rail as shown in Picture 4 and install the tab bolts. See Picture 5. **NOTE:** Use the diagram to ensure the bolts are installed in the correct position. Install the mounting brackets and secure the tab bolts using a 1/2" flat washers and lock nuts. Leave loose. See Image 3.

6.- To install the auxiliary bracket, look at the frame and locate the (TC) plate in the chassis front end. Install the tubular bracket from the front bumper and hold it to the (TC) plate of the chassis using 1/2 x 2" hex head bolt with flat washer and lock nut . Secure auxiliary bracket with M12 x 90mm bolts as shown on Image 3. **NOTE: Make sure that you use the holes that correspond to your vehicle year. 04-05 or 06-07 models. See Image 6.**

7. Install the Pull Pro to the main mounting brackets and bolt them together using 1/2" x 1 1/4" hex head bolts, flat washers and lock nuts. Bolt the auxiliary mounting bracket to the side plate using 1/2" x 1 1/4" hex head bolts, flat washers and lock nuts. If it is necessary, install the license bracket on the bottom side of the winch plate using two (2) 3/8" bolts, flat washers and lock nuts. Tighten the license plate to its bracket using two (2) 1/4" x 1" bolts, flat washers and lock nuts. Leave loose.

8. Install the brush guards to the center grille using the button allen bolts, flat washers and lock nuts. Place a gasket between the brush guard and the main plate.

9. Make any final adjustments to the alignment of the Pull Pro and tighten all bolts. Make sure the Pull Pro does not interfere with opening and closing the hood. Periodically check and re-tighten bolts as necessary over the term of use.

10. Fill out included warranty card and place in the vehicle.

#### Cleaning and care instructions:

Diseño:

Calidad:

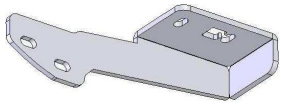
Protect the finish with a non-abrasive automotive wax, (e.g. Pure Carnauba) on a regular basis. The use of any soap, polish, or wax that contains an abrasive is detrimental to the finish, as the compounds scratch the finish and cause corrosion.

# INSTALLATION INSTRUCTIONS

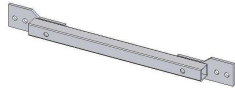
23289 Winch Bumper (B-PS)

53233 PULL PRO

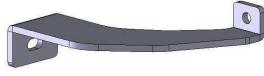
04 - 08 Ford Pick Up F-Series New Body Style



Main Bracket



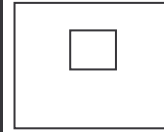
Tubular Bracket



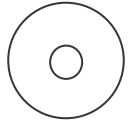
Auxiliary Bracket  
2004 - 2005



Auxiliary Bracket  
2006

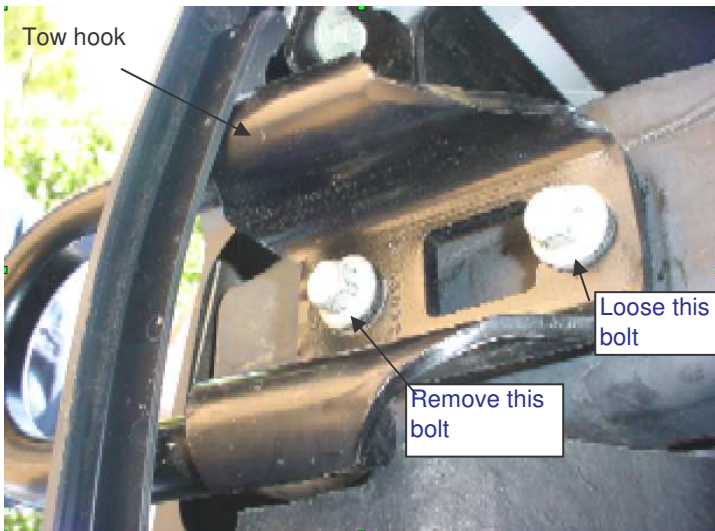


Plate

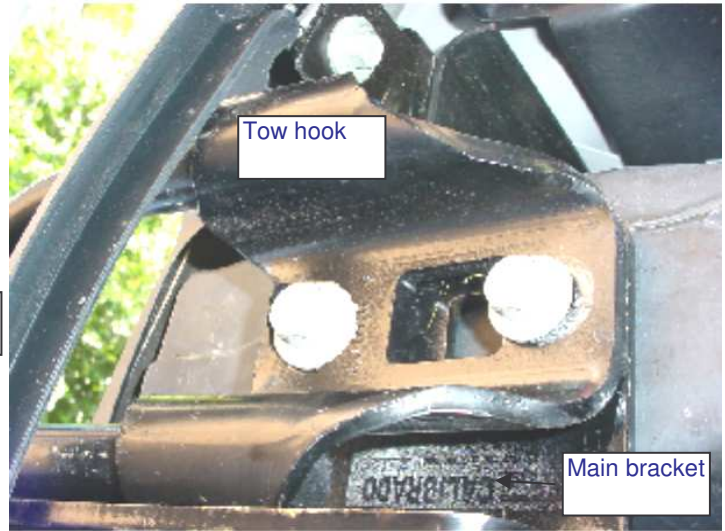


Special  
Flat Washer

Picture 1



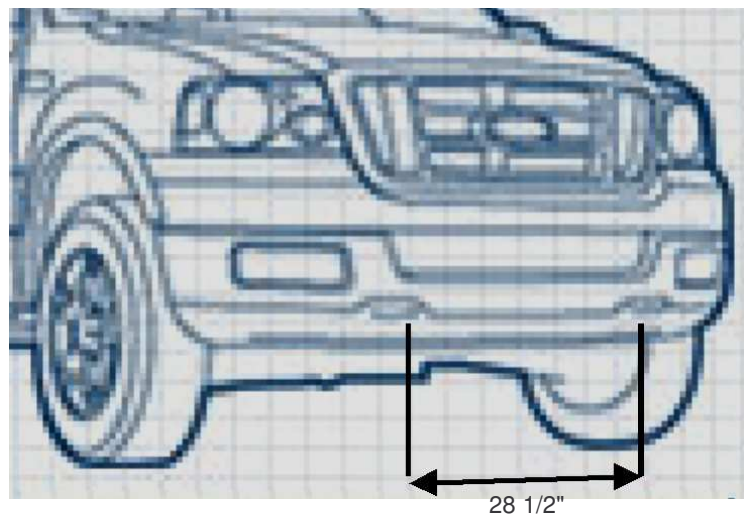
Picture 2



Picture 3



Image 1



## Cleaning and care instructions:

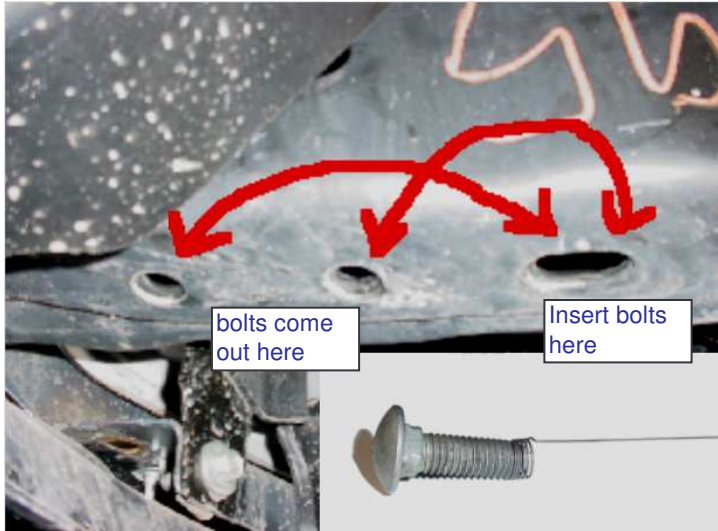
Protect the finish with a non-abrasive automotive wax, (e.g. Pure Carnauba) on a regular basis. The use of any soap, polish, or wax that contains an abrasive is detrimental to the finish, as the compounds scratch the finish and cause corrosion.

Diseño:

Calidad:

**INSTALLATION INSTRUCTIONS**  
**23289 Winch Bumper (B-PS)**  
**53233 PULL PRO**  
**04 - 08 Ford Pick Up F-Series New Body Style**

Picture 4



Picture 5

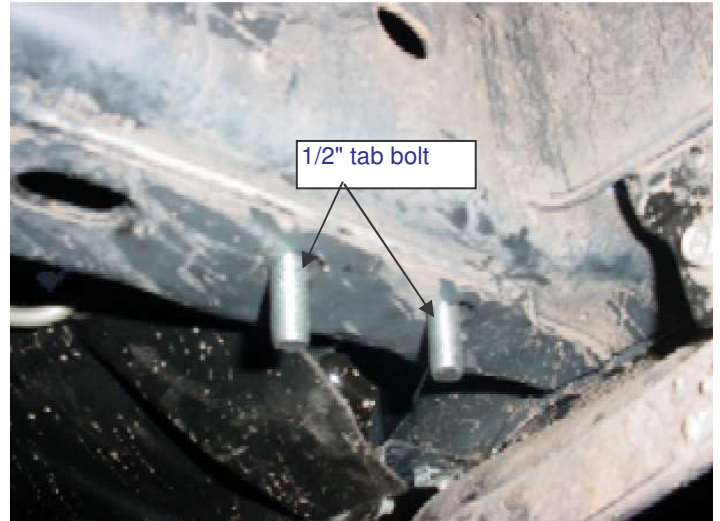


Image 2

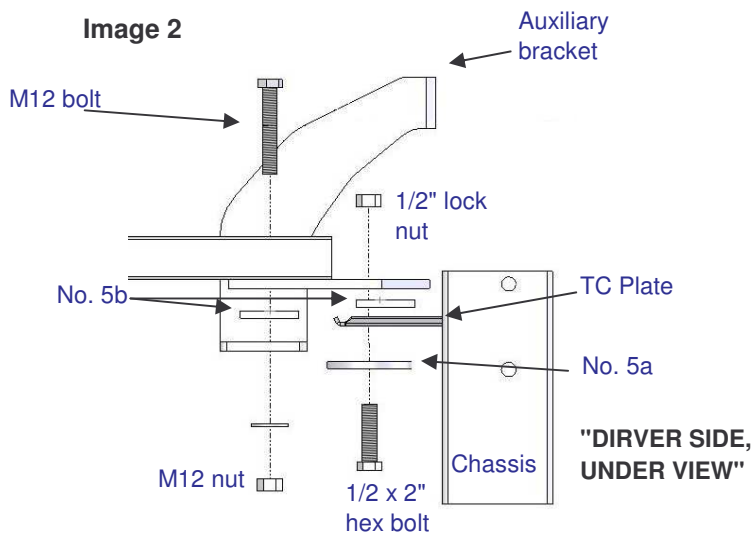


Image 3

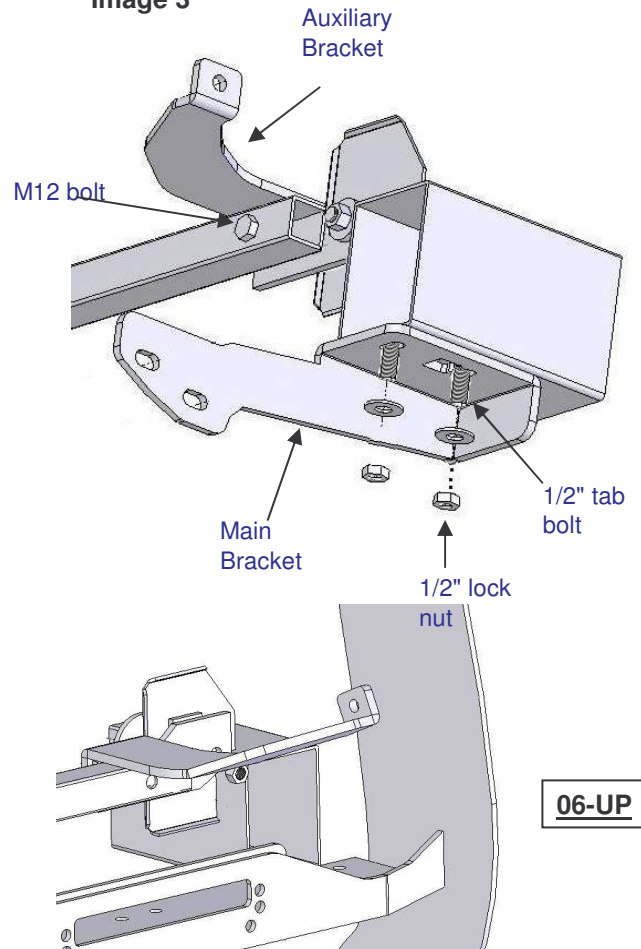
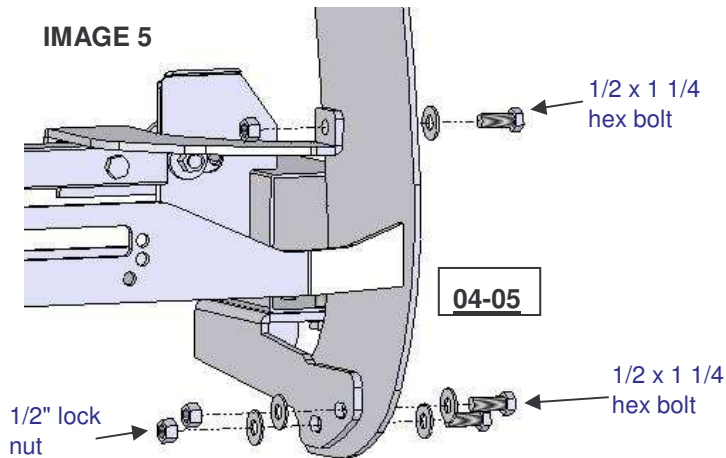


IMAGE 5



**Cleaning and care instructions:**

Protect the finish with a non-abrasive automotive wax, (e.g. Pure Carnauba) on a regular basis. The use of any soap, polish, or wax that contains an abrasive is detrimental to the finish, as the compounds scratch the finish and cause corrosion.

Diseño:

Calidad: