

INSTALLATION INSTRUCTIONS

Pull Pro 53176 (1 - 4- 5- 40) / Winch Bumper 53176 (1B-40PS)

CHEVY SILVERADO 07-08

Parts List:

QTY

(1) Pull Pro	(2) M12 x 140 Hex head bolt	(2) 1/4 x 1" Hex head bolt
(2) Brushguard (Opcional)	(2) 3/8 x 1 1/4" Hex head bolt	(2) 1/4" Flat washer
(2) Lower Bracket	(10) 1/2" Lock nut	(2) 1/4" Lock nut
(2) Upper Bracket	(2) M12 nut	Pre-installed bolts:
(2) 1/2" Bolt plate	(2) 3/8" Lock nut	(4) 3/8x1 1/4" bottom allen head
Hardware kit including:	(20) 1/2" Flat washer	(4) 3/8" Flat washer
(8) 1/2 x 1 1/4" Hex head bolt	(2) 3/8" Flat washer	(4) 3/8" nut
	(2) 1/2" Lock washer	(2) Flat rubber gaskets.

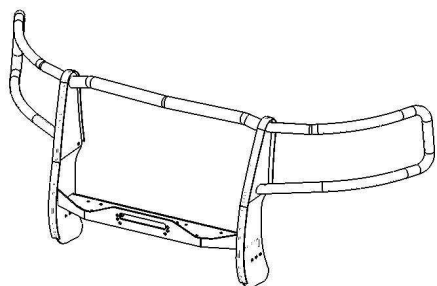
Tools required:

9/16" Socket	18 mm Wrench	Ratchet	3/4" Socket	Flat screwdriver	5/32" Allen wrench
18 mm Socket	15 mm Socket	Extension ratchet	3/4" Wrench	Long nose pliers	

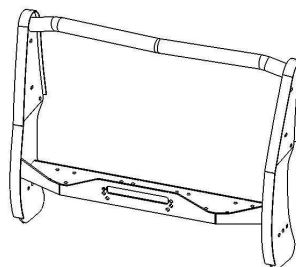
Instructions:

Approximated installation time: 50 min.

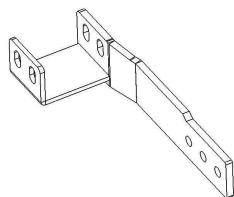
1. Before beginning installation, read the instructions thoroughly and completely. If any of the items listed above are missing, please do not proceed with the installation. Call your distributor immediately to obtain the necessary items.
2. All images represents the Driver side of the vehicle.



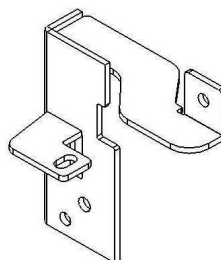
Pull Pro 4 or 5 version



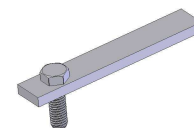
Pull Pro 1 or 40 version



Lower bracket

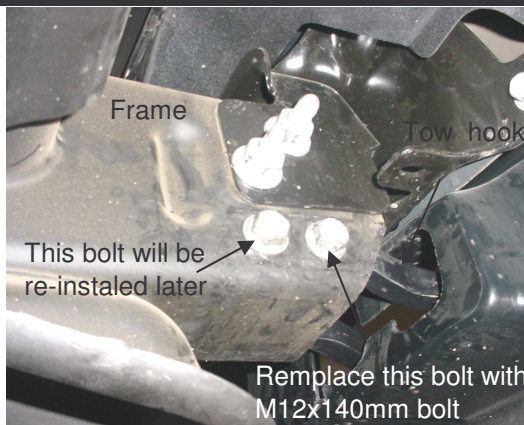


Upper bracket



Bolt plate

3. Remove the factory tow hooks, the rear bolt will be used again and front bolt will be replaced to install lower bracket. If the vehicle don't have tow hooks. See direction number 13.



4. Align the lower bracket with the frame and slot the lower bumper balance to pass through the brackets. Insert the bracket in the original tow hook location.



Lower Bracket

Cleaning and care instructions:

Design:

Quality:

Protect the finish with a non-abrasive automotive wax, (e.g. Pure Carnauba) on a regular basis. The use of any soap, polish, or wax that contains an abrasive is detrimental to the finish, as the compounds scratch the finish and cause corrosion.

INSTALLATION INSTRUCTIONS

Pull Pro 53176 (1 - 4- 5- 40) / Winch Bumper 53176 (1B-40PS)

CHEVY SILVERADO 07

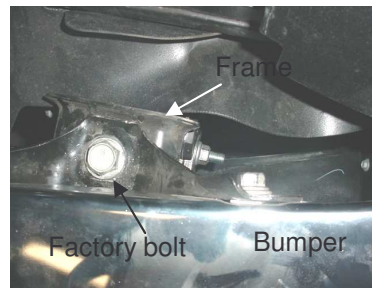
5. Place the tow hook in his original location, attach the rear side using the factory bolt, and remplace the front bolt using a M12x140.



7. Uninstall the plastic cover up the radiator removing the plastic fasteners, use a flat screwdriver



9. Remove the factory bolt that attach the bumper with the upper frame support.



11. Install the upper bracket with the factory bolt removed in step 9.



13. Install the Pull pro to the upper brackets attach using:(1) 3/8 x 1 1/4" hex head bolt and (1) 3/8" Flat washer and lock nut, to each side,



6. Remove the upper bolts and change his direction to re-install in the oposite side of the frame. This bolts will be used to install upper bracket. **NOTE: Follow this step, only in the driver side.**



8. With the long nose pliers pop out the push clips and carefully remove the grille



10. Install upper bracket to the upper bolts in frame. (In driver side re-installed in oposite direction) See step 6.



12. Install the Pull pro over the lower brackets with: (3)1/2" x 1 1/4" hex head bolts,(3) 1/2" flat washers and (3)1/2" lock nuts, to each side.



Cleaning and care instructions:

Design:

Quality:

Protect the finish with a non-abrasive automotive wax, (e.g. Pure Carnauba) on a regular basis. The use of any soap, polish, or wax that contains an abrasive is detrimental to the finish, as the compounds scratch the finish and cause corrosion.

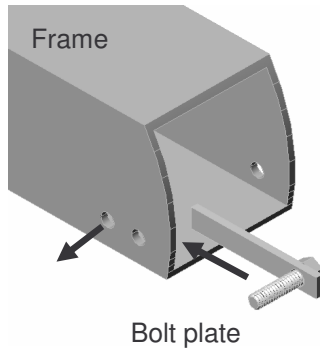
Revisado 25/01/07

G:\Usuarios\Diseño\Instructivos PDF\50S\53176-I.Pdf

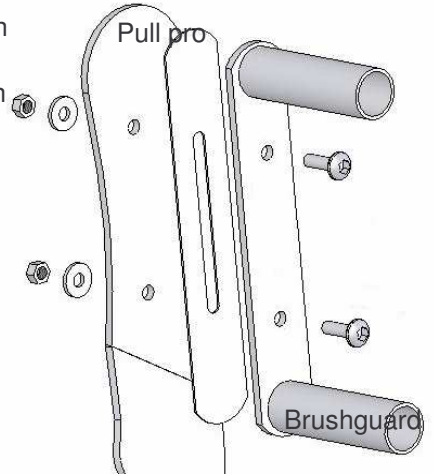
INSTALLATION INSTRUCTIONS

Pull Pro 53176 (1 - 4- 5- 40) / Winch Bumper 53176 (1B-40PS) CHEVY SILVERADO 07

14. With the lower bracket located in the frame as shown in step 6 introduce the bolt plate in the frame and place the bolt in the 2nd hole. see image beside. Also use the longer bolt included in the kit and attach with it's corresponding flat washer, lock washer and nut.



15. On modular version (1) install the brushguards as shown in the image, use the pre-installed brushguard bolts.



16. Re-install the grille and plastic cover.
17. Make any adjustments and tighten all hardware.
18. Periodically check and re-tighten bolts as necessary over the term of use.



Pull pro installed

Cleaning and care instructions:

Protect the finish with a non-abrasive automotive wax, (e.g. Pure Carnauba) on a regular basis. The use of any soap, polish, or wax that contains an abrasive is detrimental to the finish, as the compounds scratch the finish and cause corrosion.

Design:

Quality:

Revisado 25/01/07

G:\Usuarios\Diseño\Instructivos PDF\50S\53176-I.Pdf