

Jammer C4i

INSTALL GUIDE

2013-2018 RAM
6.7L CUMMINS



TABLE OF CONTENTS

3 GETTING STARTED

3 PARTS LIST

3 REQUIRED TOOLS

4 INSTALLATION INSTRUCTIONS

4 REMOVING THE STOCK INTAKE ASSEMBLY

6 REMOVING THE RAM ACTIVE AIR DOOR

7 INSTALLING THE SENSORS

8 INSTALLING THE FILTER HOUSING

9 FILTER MAINTENANCE

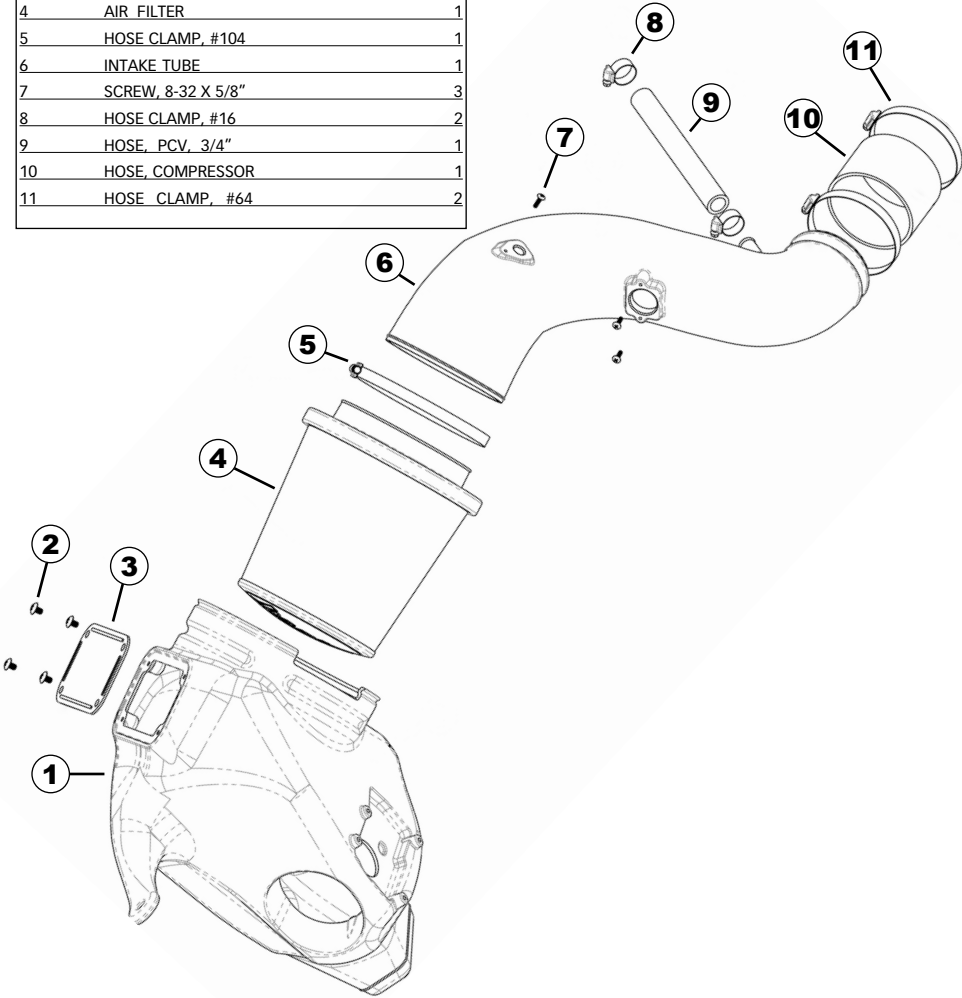
9 OILED AIR FILTERS

10 WARRANTY

GETTING STARTED

PARTS LIST

Item	Description	Qty
1	AIR FILTER HOUSING	1
2	SCREW, 1/4 - 20X3/8"	4
3	WINDOW	1
4	AIR FILTER	1
5	HOSE CLAMP, #104	1
6	INTAKE TUBE	1
7	SCREW, 8-32 X 5/8"	3
8	HOSE CLAMP, #16	2
9	HOSE, PCV, 3/4"	1
10	HOSE, COMPRESSOR	1
11	HOSE CLAMP, #64	2



REQUIRED TOOLS

- 3/8" Drive Ratchet
- Metri Sockets
- Standard Head Screwdriver
- Phillips Head Screwdriver
- Clean Shop Towels or Rags
- 5/16" Nut Drive
- Needle-nose Pliers
- T-30 Driver

INSTALLATION INSTRUCTIONS

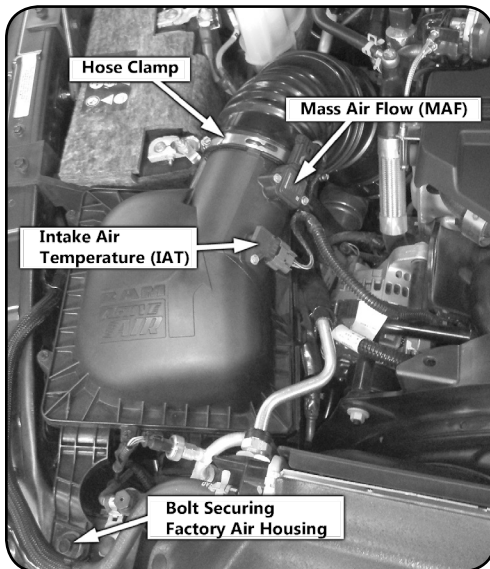
REMOVING THE STOCK INTAKE ASSEMBLY

CAUTION: Disconnect the ground cable from the battery before installation. If there are two batteries, disconnect both.

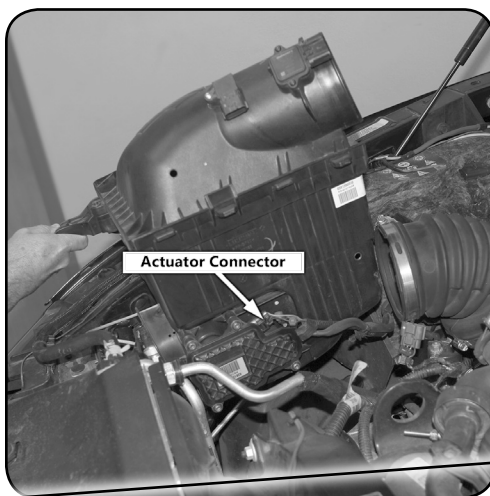
STEP 1 - Remove the bolt, using a 13mm socket, from the radiator core support that secures the factory air housing and save for reuse.

STEP 2 - Loosen the hose clamp to the stock intake tube attached to the air housing.

STEP 3 - Slide the red locking mechanism up on the Mass Air Flow (MAF) sensor connector. Press the tab on the connector and remove the connector. Press the tab on the Intake Air Temperature (IAT) sensor connector and remove the connector. Pull the plastic anchor holding the wiring harness to the air housing lid and move the harness out of the way.



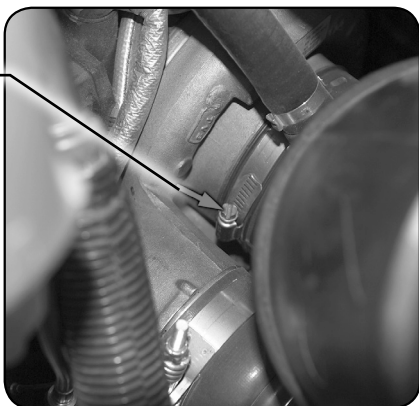
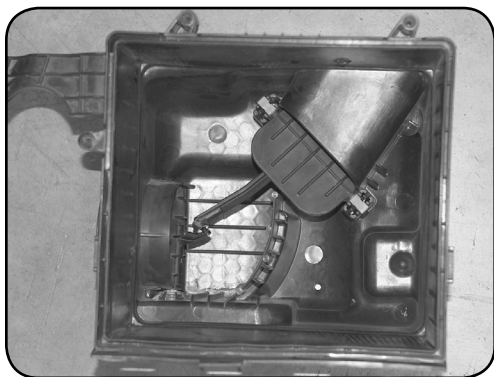
STEP 4 - Lift the air housing up and partially out of the engine compartment to gain access to the Ram Active Air® actuator connector on the actuator motor on the side near the bottom of the housing. Be careful not to pull the housing up too far to damage the wiring harness. Once the housing is pulled out enough to gain access to this connector depress the tab on the end of the connector and disconnect the connector from the motor. The housing can now be removed completely from the vehicle and set aside for disassembly later.



STEP 5 - Locate the spring clamp retaining the PCV hose. Using appropriate pliers loosen the clamp and slide it up over the metal tube and out of the way. With the clamp out of the way pull the hose to disconnect from the metal tube. Remove the spring clamp and set aside.

STEP 6 - Loosen the hose clamp holding the intake tube to the compressor inlet and remove the intake tube from the vehicle.

STEP 7 - The factory Ram Active Air® actuator and door must be removed from the stock air housing and installed in the Jammer housing.



NOTE: It is important that the electrical connector be disconnected from the actuator motor before beginning to remove the actuator. Do not plug the connector back into the actuator until instructed to do so below after the actuator is completely reinstalled. Failure to do so can cause the actuator motor to rotate to a position that makes it impossible to install.

STEP 8 - Remove the screws retaining the air housing lid and remove the lid and filter. Looking inside the housing you can see the stock Ram Active Air® doors and linkage.

STEP 9 - Remove the four screws retaining the actuator motor on the side of the housing using a T-30 Torx driver.



REMOVING THE RAM ACTIVE AIR DOOR

STEP 10 - Using a flat blade screwdriver inserted between the Ram Active Air® door and the side of the housing gently pry the door from the actuator motor shaft and pull the actuator motor from the housing.

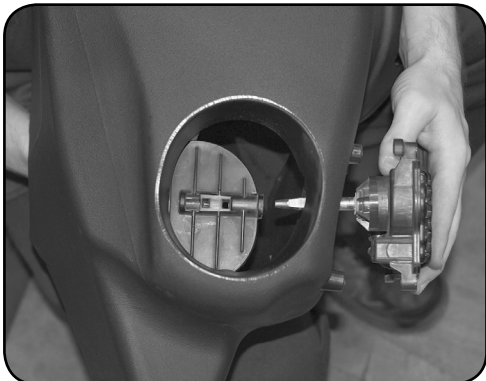


STEP 11 - With the actuator motor removed the actuator door can now be disconnected from the linkage. The lever arm on the door is fragile so care must be taken to disconnect the door from the linkage without breaking the arm on the door. To accomplish this, the arm on the door must be supported as close to the joint as possible and disconnect the joint by twisting and pulling simultaneously. Go slow. If the arm does break this will not affect the performance of this Jammer Intake system but will prevent the stock function if ever returned to stock.



STEP 12 - Install the Ram Active Air® door and actuator motor into the Jammer housing. Begin to insert the actuator motor from the side and hold the door inside the housing. Slide the door over the actuator motor shaft. Make sure the door and actuator motor are oriented correctly. When the door is fully inserted over the shaft you will feel a click and the door will not pull from the shaft easily.

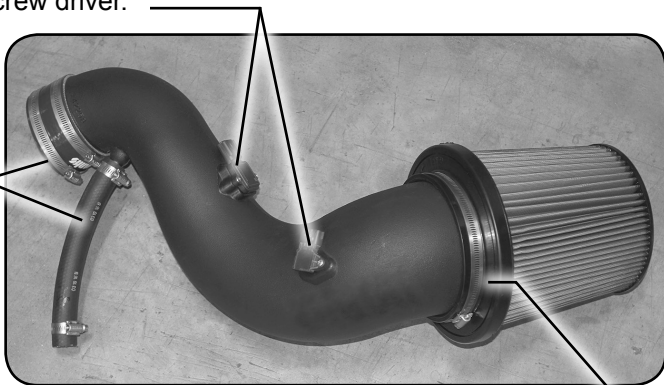
STEP 13 - Reinstall the four screws to retain the actuator motor.



INSTALLING THE SENSORS

STEP 14 - Remove the IAT and MAF sensors from the stock intake using a 7mm socket. Install these sensors in the Jammer Intake Tube using the supplied screws and a Phillips screw driver.

STEP 15 - Install the PCV hose and two hose clamps along with the compressor inlet hose and its two hose clamps onto the Jammer Intake Tube in the orientation shown. Tighten the clamps retaining the hoses to the tube and leave the other clamps loose.

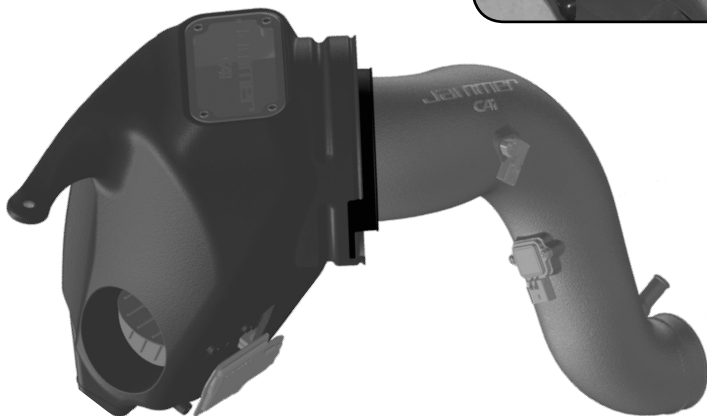
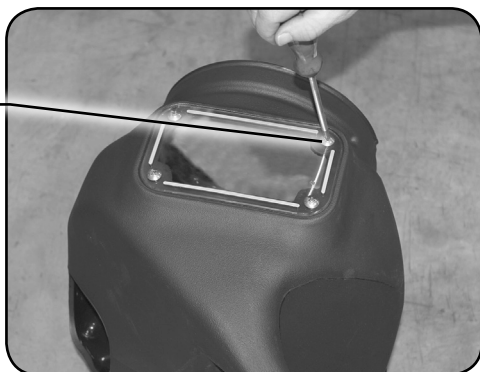


STEP 16 - Install the Jammer Filter onto the Intake Tube and secure with the hose clamp. The hose clamp must be held up against the base of the filter while tightening the clamp.

STEP 17 - Apply blue threadlocker to 4 supplied window screw and use to install clear window onto housing. Do not over tighten these screw. They just need to be snug.

NOTE: Window screws may vibrate loose if threadlocker is not applied.

STEP 18 - Install the filter into the housing ensuring that the filter is completely inserted into the housing.



INSTALLING THE FILTER HOUSING

STEP 19 - Begin to install the Jammer assembly into the vehicle as shown. Before completely install the housing, make sure to reconnect the wiring to the actuator motor. Also reconnect the wiring to the IAT and MAF sensors and push the red locking mechanism down on the MAF connector.

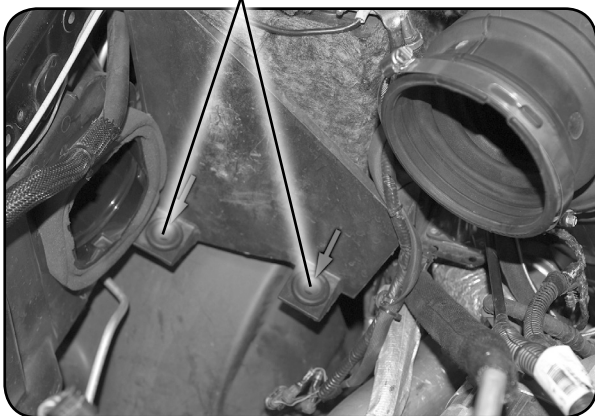


STEP 20 - Install the compressor inlet hose over the inlet of the compressor.

STEP 21 - Insert the Jammer housing down into the engine compartment pushing the pins on the bottom of the housing into the rubber grommets on the fender well. Ensure the pins are engaged into the grommets by making sure the housing is held in position and is not easily removed.

STEP 22 - Reinstall the bolt retaining the housing to the radiator core support.

STEP 23 - Ensure the hose is still completely installed over the compressor inlet and tighten the clamp to secure the hose to the compressor.



STEP 24 - Install the PCV hose over the metal tube of the PCV system along with the hose clamp. Once the hose is fully installed over the metal tube tighten the clamp to secure the hose.

NOTE: On some vehicles the metal tube can become loose and move out of position. It may be necessary to move this metal tube in order for the PCV hose to fit correctly. Take care when repositioning this metal tube to not use excessive force and damage the tube. If the PCV hose is too long it may need to be trimmed to prevent the hose from kinking.

STEP 25 - This completes the installation of the Jammer Intake System. Check all hose clamps for tightness and connectors for a sure fit. Ensure there is proper clearance around the intake tube and that all wiring is secured away from hot or moving parts.

FILTER MAINTENANCE

OILED AIR FILTERS

The Jammer Oiled Air Filter comes pre-oiled. Follow these instructions along with the instructions included with the cleaning system to clean and re-oil your filter.

Cleaning Tips

- Tap the filter to remove any large debri, then gently brush the outer walls with a soft bristle brush to remove any remaining debri.
- Spray an air-filter cleaner liberally onto the entire element and let soak for 10 minutes.
- Large air-filters can be rolled or soaked in a shallow pan of air-filter cleaner.

CAUTION: NEVER use gasoline, steam, caustic solutions, strong detergents, high-pressure nozzles, or cleaning solvents to clean the filter element. All of these can cause harm to the filter media as well as SHRINK and HARDEN the rubber end caps.

Rinsing Tips

- Rinse off the element with low-pressure water. Tap water is okay. Always flush from the clean side to dirty side. This removes the dirt and does not drive it into the filter.

Drying Tips

- Always dry naturally. After rinsing, shake off all excess water and let the element dry naturally.

Oiling Tips

- After cleaning air filters, always reoil before using. Spray filter oil down into each pleat with one pass per pleat. Wait 10 minutes and re-oil any dry spots still showing.
- Never use a filter without oil (the filter will not stop the dirt without the oil).
- NEVER USE Automatic Transmission Fluid.
- NEVER USE Motor Oil.
- NEVER USE Diesel Fuel.
- NEVER USE WD40, LPS, or other light-weight oils.

Performance Tips

- Service every 50-100,000 miles on street-driven applications.
- Service more often in offroad or heavy-dust conditions.
- If an air-filter restriction gauge (i.e. Filter Minder) is installed, then change the element when the air-filter restriction reaches 18 in-H₂O.

CAUTION: Extremely fine dust from agriculture or offroad use will pull the oil from the element. Frequent re-oiling of the filter's clean side may be required.

WARRANTY

Powerteq, LLC, (hereafter “SELLER”), subject to the conditions and limitations set forth herein, warrants to the original consumer purchaser only that each Jammer product sold by SELLER (the “Product”) through an authorized dealer will be free from defects in material and workmanship under normal operating conditions for one (1) year after the date of purchase. SELLER will repair or replace, at SELLER’s option, any Product that is found to be defective in material or workmanship under normal operating conditions during the one-year period after the date of purchase by the original consumer purchaser.

What Is Not Covered by This Warranty?

This warranty does not apply to any of the following:

1. Loss, damage, repairs, or maintenance required as a result of accident, abuse, negligence, or misuse.
2. Loss, damage, repairs, or maintenance required as a result of any third-party tuning software.
3. Loss, damage, repairs, or maintenance required as a result of fire, water, hail, theft, earthquake, wind, ice, lightening, acts of god, accident, animals, corrosive atmosphere, or other external causes beyond the control of SELLER.
4. Any special, indirect, incidental, consequential, or punitive damages, including property damage, arising out of or related to the use or loss of use of the Product under this Limited Warranty.
5. Any Products purchased through auction websites.

Limitation of Liability

The terms of this Limited Warranty constitute the entire agreement between the parties with respect to the Product. The original consumer purchaser’s exclusive remedy shall be limited to the repair or replacement of the defective product. EXCLUDING THE LIMITED WARRANTY PROVIDED ABOVE, SELLER, TO THE MAXIMUM EXTENT PERMITTED BY LAW, MAKES NO WARRANTIES, EXPRESSED OR IMPLIED, AND DISCLAIMS ALL WARRANTIES, DUEITES AND CONDITIONS, WHETHER EXPRESS, IMPLIED, OR STATUTORY, WITH RESPECT TO THE WORK, INCLUDING WITHOUT LIMITATION ANY IMPLIED WARRANTIES OF MERCHANTABILITY OR FITNESS FOR A PARTICULAR PURPOSE. ANY REMEDY IS LIMITED TO THE PURCHASE PRICE OF THE PRODUCT.

How to Make a Warranty Claim

Contact Powerteq Customer Service. BUYER will be required to submit proof of purchase from an authorized dealer within 5 days of the warranty claim.

THE INSTALLATION OF THIS PRODUCT INDICATES THAT THE BUYER HAS READ AND UNDERSTANDS THIS AGREEMENT AND ACCEPTS ITS TERMS AND CONDITIONS. IN THE EVENT THAT THE BUYER DOES NOT AGREE WITH THIS AGREEMENT, THE BUYER MAY PROMPTLY RETURN THIS PRODUCT, IN A NEW AND UNUSED CONDITION, WITH A DATED PROOF OF PURCHASE, TO THE PLACE OF PURCHASE WITHIN THIRTY (30) DAYS FROM DATE OF PURCHASE FOR A FULL REFUND.

COPYRIGHT© 2018 REV 00

For additional questions not found in the user guide call:

Powerteq Technical Support: (855) 292-2121 6:00 am - 5:00 pm MST

**To expedite your support call, please have your Vehicle Information,
Part Number, and Serial Number ready prior to calling Technical Support.**