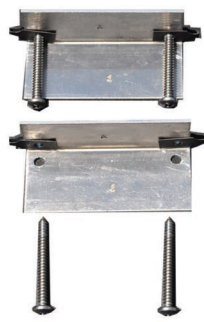
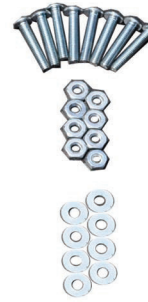


BAK Box 2 has been designed to work with both Roll-X and BAK Flip covers. The new clamp on design is simple and easy to install. The end plates interlock with the rail for added strength and a watertight fit. BAK Box 2 adjusts to fit at the front, center or rear of the bed

Clamp Brackets



Center Tray Hardware



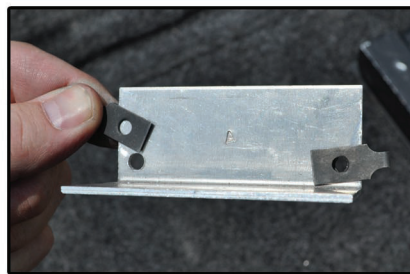
Left and Right End Plates



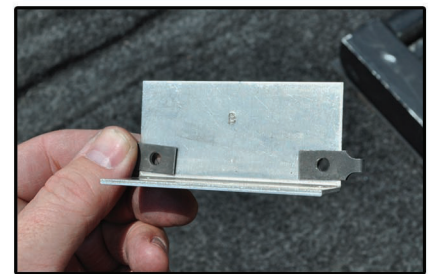
Center Tray with three panel fold away design



1. Mount the Center Tray to the End Bracket with 4 bolts, 4 washers and 4 nuts, Leave them loose for now



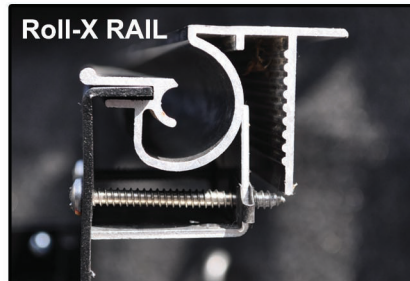
2. If you are installing BAK Box 2 on Roll-X, then the clips must be on the side of the Clamp Bracket marked "A"



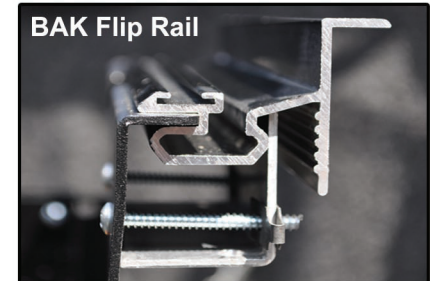
3. If you are installing BAK Box 2 on BAK Flip, then the clips must be on the side of the Clamp Bracket marked "B"



4. Pre-assemble the Clamp Bracket to the End Plate where it will not interfere with the clamp on the bed rail



5. You can see how the Roll-X rail and the Clamp Bracket assemble in this cross section



6. You can see how the BAK Flip rail and the Clamp Bracket assemble in this cross section



7. Insert the End Plate into the rail as shown and tighten the screws. Do Not Overtighten



8. With everything in place, tighten all the hardware. Do Not Overtighten

Tools Needed: Phillips Screw Driver
3/8 Wrench, or Pliers

