

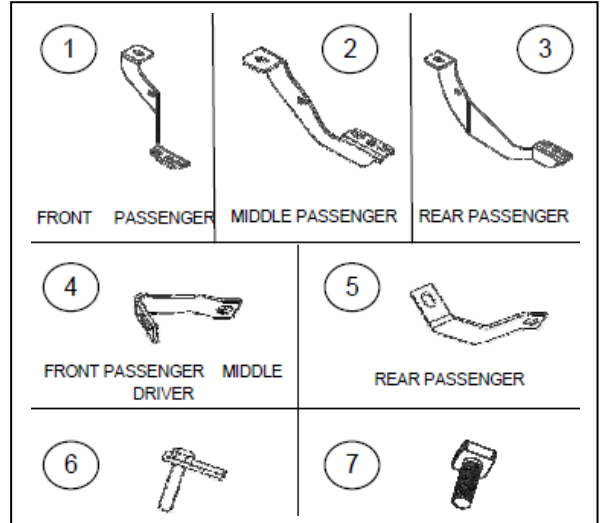
# Installation Instructions

## **DOMINATOR D4 DUAL-STEP Part # D44044**

1999-2006 Chevrolet Silverado & GMC Sierra 1500, 2500HD, 3500 Extended Cab  
 2011-2013 Chevrolet Silverado & GMC Sierra 2500HD, 3500HD Extended Cab (Diesel Only)

### Parts List

Item	Qty.	Part #	Description	Torque
1	1 Pr	391014AA	Front Mounting Bracket	-
2	1 Pr	390764CA	Middle Mounting Bracket	-
3	1 Pr	390764AA	Rear Mounting Bracket	-
4	2 Pr	391014FA	Front & Middle Auxiliary Bracket	-
5	1 pr	390764BA	Rear Auxiliary Bracket	-
6	6	3713312	5/16" Bolt Plate	-
7	12	-	5/16" Square Head Bolt	11Ft. Lbs.
8	18	-	5/16" Flat Washer	-
9	18	-	5/16" Lock Washer	-
10	18	-	5/16" Hex Nut	11Ft. Lbs.
11	6	-	3/8" 1" Carriage Bolt	30 Ft. Lbs.
12	6	-	3/8" Flat Washer	-
13	6	-	3/8" Lock Washer	-
14	6	-	3/8" Hex Nut	30 Ft. Lbs.
15	6	-	M12 x 12mm Hex Bolt	70 Ft. Lbs.
16	6	-	1/2" Lock Washer	-
17	6	-	1/2" Flat Washer	-
18	1	D44044D	Driver Side Step	-
19	1	D44044P	Passenger Side Step	-



**Tool Required:**

1/2", 9/16", 18mm, 19mm & 21mm Socket  
 17mm (12 point) Socket  
 5mm, 1/2" & 9/16" Wrench  
 Ratchet & Ratchet Extension

**Approximate Installation Time: 45 min**

**Read the installation instructions completely and verify that all of the parts listed are accounted for. If you have defective, missing or damaged parts or need assistance, please contact *Go Rhino Products* for fast, friendly customer service at: 1-888-427-4466 or email: [warranty@gorhino.com](mailto:warranty@gorhino.com)**

**WARNING!** GM uses thread-locking compound on all factory body mount bolts. Removal using an air assisted impact or ratchet will damage the body mount bolt threads and the internal nut assembly. We only recommend using hand tools to slowly remove and reinstall body mount bolts on all GM vehicles.

**IMPORTANT!** If during the body mount bolt removal process, it becomes increasingly difficult to unscrew the bolt with hand tools, tighten the bolt several rotations to clear the thread-locking compound from the threads, then reverse the direction and continue to unscrew the bolt until it is out. Repeat this process as necessary on all of the body mount bolts. Use of an appropriate anti-seize compound is highly recommended for re-installation. Tighten the body mount bolts to factory torque specifications for your particular model year.

**NOTE:** The parts kit may include additional fastener that will not be used for this application.

## Installation

**Step-1** Begin the installation by removing the passenger side front body mount bolt. **Picture #1**

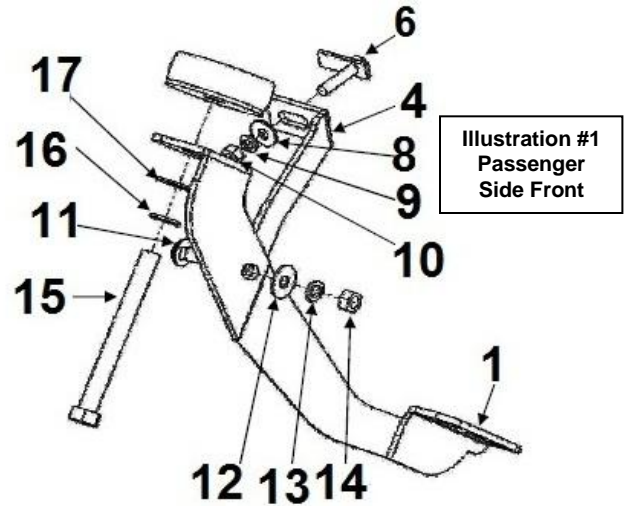
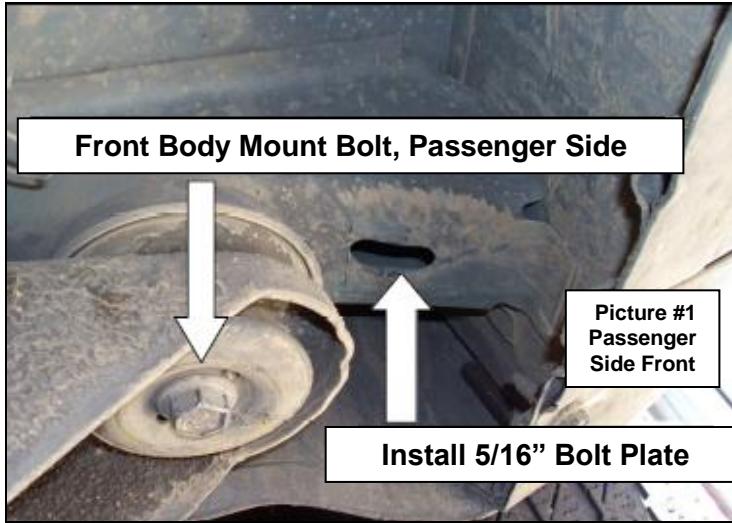
Keep all existing washers and bushing in place, and attach the front bracket to the vehicle using the factory body mount bolt or one of the supplied 12mm hex bolts depending on the model year of your vehicle. Leave the bolt loose for final adjustment.

**Illustration #1**

**NOTE:** For model year 2006 and up, use the factory body mounting bolts.

**Step-2** Locate the obround hole in the underside of the body and install one of the 5/16" bolt plates. **Picture #1**

Attach the passenger side front auxiliary bracket to the body using the bolt plate, (1) 5/16" flat washer, (1) 5/16" lock washer and (1) 5/16" hex nut. Attach the opposite end of the auxiliary bracket to the side of the front bracket using (1) 3/8" x 1" carriage bolt, (1) 3/8" flat washer, (1) 3/8" lock washer and (1) 3/8" hex nut. Leave the nuts and bolts loose for final adjustment. **Illustration #1**



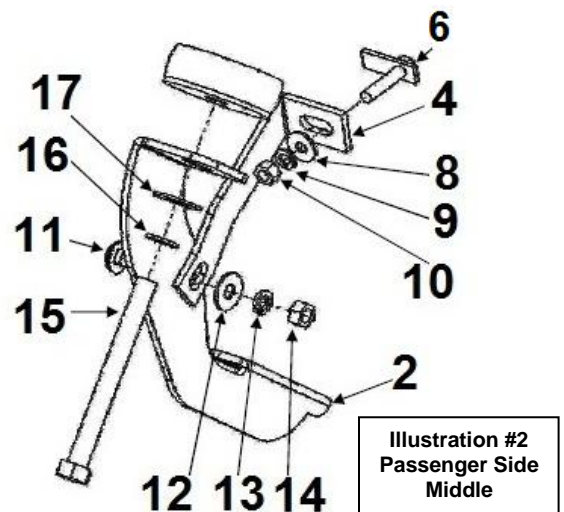
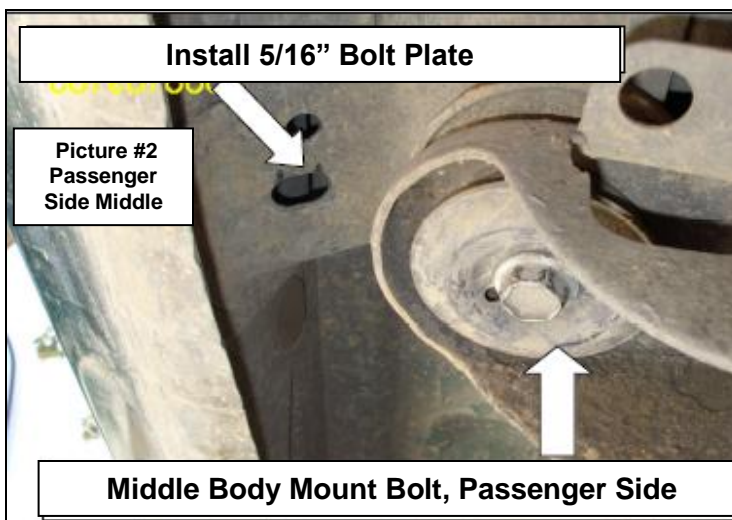
**Step-3** Remove the passenger side middle body mount bolt. **Picture #2**

Keep all existing washers and bushing in place, and attach the front bracket to the vehicle using the factory body mount bolt or one of the supplied 12mm hex bolts depending on the model year of your vehicle. Leave the bolt loose for final adjustment.

**Illustration #2**

**Step-4** Locate the obround hole in the underside of the body and install one of the 5/16" bolt plates. **Picture #2**

Attach the passenger side middle auxiliary bracket to the body using the bolt plate, (1) 5/16" flat washer, (1) 5/16" lock washer and (1) 5/16" hex nut. Attach the opposite end of the auxiliary bracket to the side of the middle bracket using (1) 3/8" x 1" carriage bolt, (1) 3/8" flat washer, (1) 3/8" lock washer and (1) 3/8" hex nut. Leave the nuts and bolts loose for final adjustment. **Illustration #2**



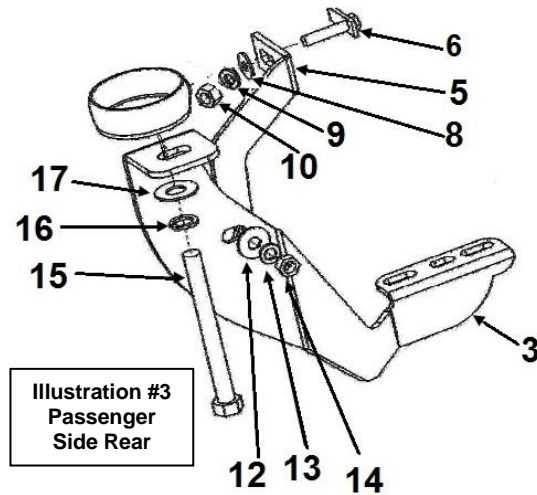
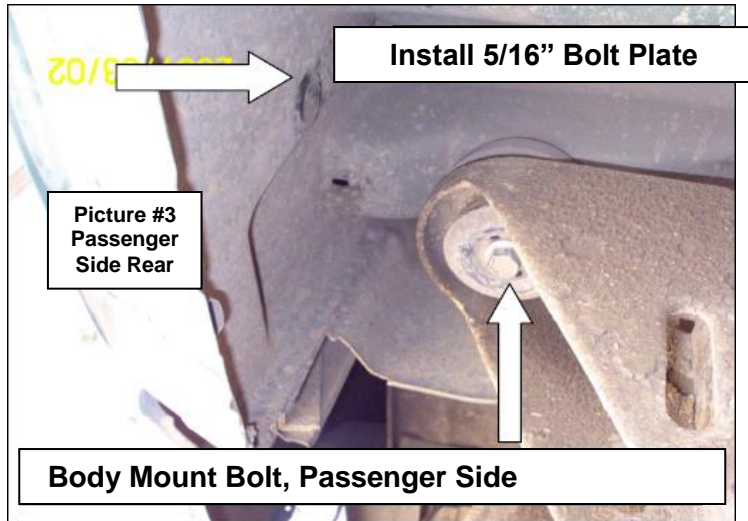
**Step-5** Remove the passenger side rear body mount bolt. **Picture #3**

Keep all existing washers and bushing in place, and attach the front bracket to the vehicle using the factory body mount bolt or one of the supplied 12mm hex bolts depending on the model year of your vehicle. Leave the bolt loose for final adjustment.

**Illustration #3**

**Step-6** Locate and remove the plastic plug in the body rocker panel to expose the round hole, and install one of the 5/16" bolt plates. **Picture #3**

Attach the passenger side rear auxiliary bracket to the body rocker panel using the bolt plate, (1) 5/16" flat washer, (1) 5/16" lock washer and (1) 5/16" hex nut. Attach the opposite end of the auxiliary bracket to the side of the rear bracket using (1) 3/8" x 1" carriage bolt, (1) 3/8" flat washer, (1) 3/8" lock washer and (1) 3/8" hex nut. Leave the nuts and bolts loose for final adjustment. **Illustration #3**



**Step-7** Attach the passenger side step to each of the brackets using (2) 5/16" x 1" square head bolts, (2) 5/16" flat washers and (2) 5/16" lock washers as shown. **Illustration #3 & #5**

**Step-8** Align the side step with the vehicle and tighten all side step and mounting bracket nuts and bolts. Repeat the installation steps to install the driver side brackets and side step. Remember to check and retighten all nuts and bolts periodically.

