

DOMINATOR D4

INSTALLATION INSTRUCTIONS

Part #D44043	Chevrolet Silverado & GMC Sierra	1500 Double Cab	2014-2015
	Chevrolet Silverado & GMC Sierra	2500HD & 3500HD Double Cab (Gasoline Only)	2015

Parts List					Required Tools (Not included)		
Item	Qty.	Code	Description	Max. Torque	Qty.	Description	
1 Kit BRK-D44-203 Bracket Kit					-		
1	4 Piece	D44-2036BA	Front & Front Center Bracket	-	1	1/2" Socket & 1/2" Wrench	
2	4 Piece	D44-2036AA	Rear & Rear Center Bracket	-	1	13mm Socket & 13mm Wrench	
3	4 Piece	3912021AA	Spacer	-	1	Ratchet	
1 Kit KTE-D44-201 Hardware Bolt Kit					-	1	Extension
4	16 Piece	-	5/16" x 1" Hex Bolt	11 Lb.ft	Product Image 		
5	32 Piece	-	5/16" Lock Washer	-			
6	16 Piece	-	M8 P1.25 Hex Nut	-			
7	16 Piece	-	M8 x 25mm Hex Bolt	20 Lb.ft			
8	8 Piece	-	M8 P1.25 Clip Nut	20 Lb.ft			
9	40 Piece	-	3/8" Flat Washer	-			
10	1 Set	-	D4 Side Bars (Passenger / Driver)				

Instructions

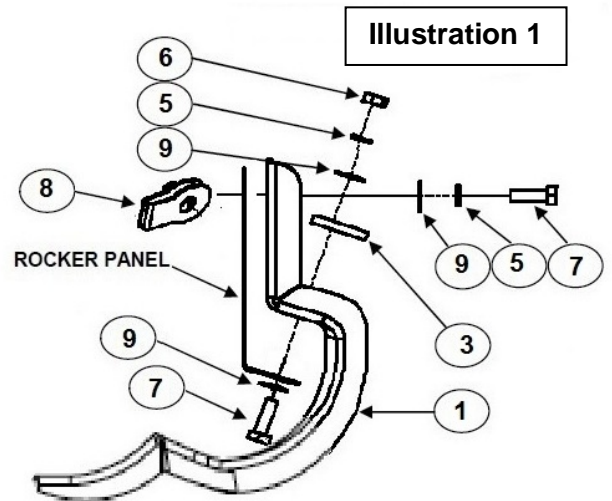
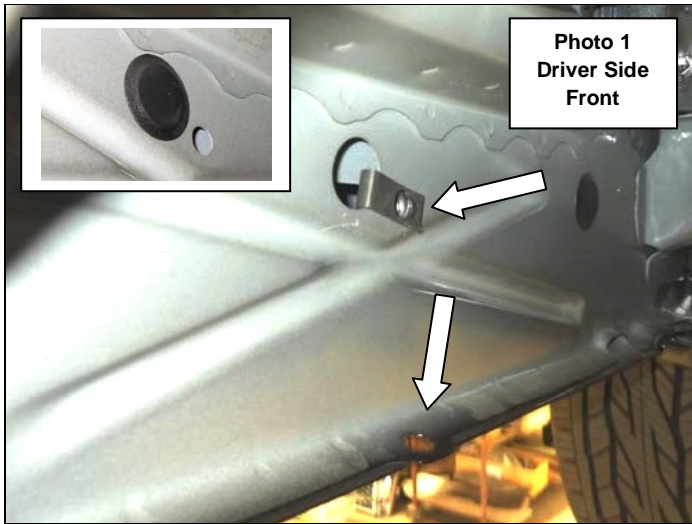


Before beginning the installation, please read all directions carefully and verify that all necessary hardware is accounted for. If any parts are missing, stop the installation and contact your distributor immediately. This installation uses 2 front and 2 rear brackets per side.

Front & Front Center Bracket Installation

Step-1 Locate the hole in the body pinch mold and the plastic plug in the rocker panel at the front and front center of the cab. Remove the plastic plug from the rocker panel and install (1) M8 U-Nut in the rocker panel, (**Photo 1**).

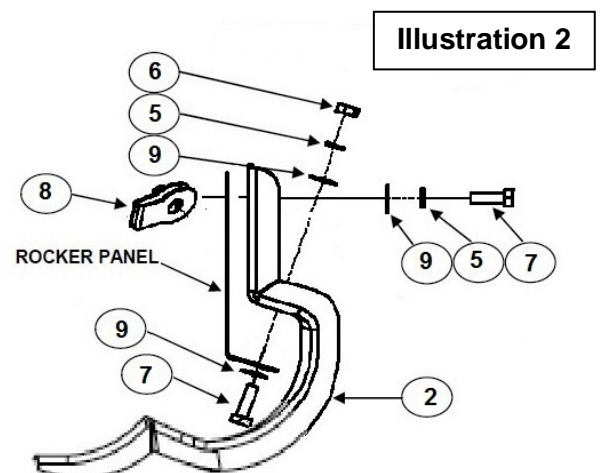
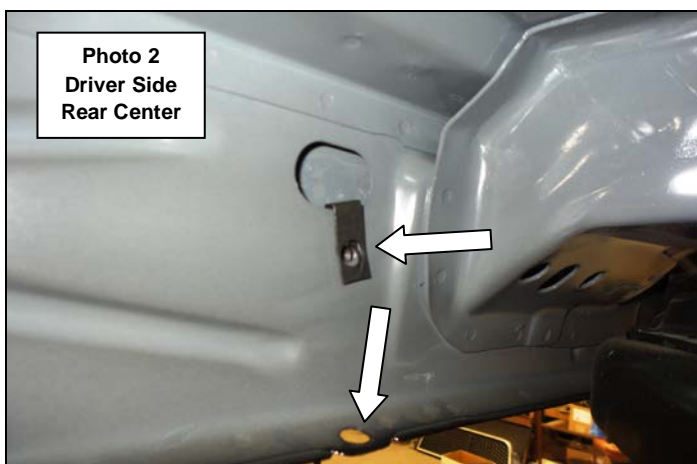
Step-2 Attach the front brackets to the pinch mold using (1) M8 hex bolt, (2) 3/8" flat washers, (1) 5/16" lock washer and (1) M8 hex nut, and to the rocker panel using (1) M8 hex bolt, (1) 5/16" lock washer and (1) 3/8" flat washer, (**Illustration 1**). Leave the nut and bolts loose for final adjustment.



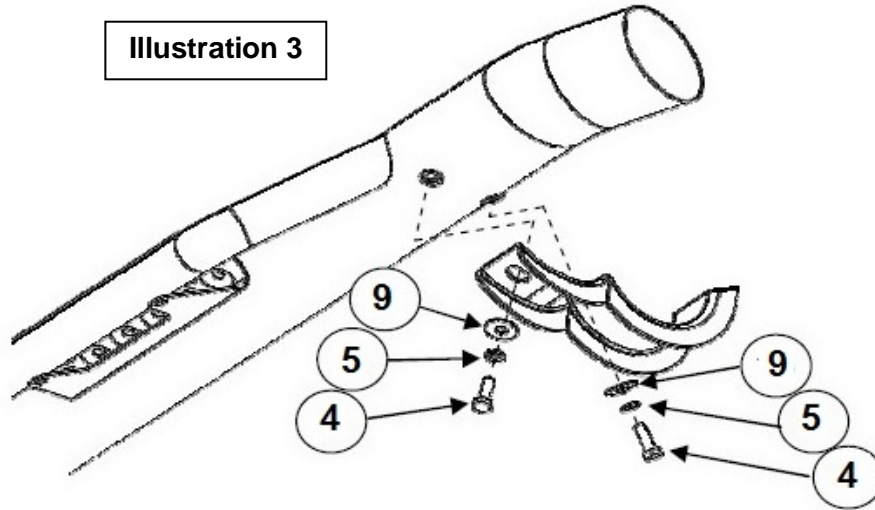
Rear Center & Rear Bracket Installation

Step-3 Locate the hole in the body pinch mold and the plastic plug in the rocker panel at the rear center and rear of the cab. Remove the plastic plug from the rocker panel and install (1) M8 U-Nut in the rocker panel, (**Photo 2**).

Step-4 Attach the rear brackets to the pinch mold using (1) M8 hex bolt, (2) 3/8" flat washers, (1) 5/16" lock washer and (1) M8 hex nut, and to the rocker panel using (1) M8 hex bolt, (1) 5/16" lock washer and (1) 3/8" flat washer, (**Illustration 2**). Leave the nut and bolts loose for final adjustment.



Step-5 Attach the driver side bar to each of the brackets using (2) 5/16" x 1" hex bolts, (2) 5/16" lock washers and (2) 3/8" flat washers, (**Illustration 3**).



Step-6 Align the side bar with the vehicle and tighten all side bar and bracket nuts and bolts. Repeat the installation steps to install the passenger side brackets and side bar. Remember to check and retighten all nuts and bolts periodically.

