



INSTALL INSTRUCTIONS

IDENTITY REAR BUMPER

Product : 3202DR

Application : 2020+ CHEVY & GMC 2500HD, 3500HD

I WARNING

Read the instructions completely before beginning installation. Before tightening bolts, drilling or cutting where required, check to make sure there are no obstructions such as brake, fuel or electrical lines which may be damaged. Also keep in mind this is an after-market product and MAY require minor shimming and/or trimming, reaming, etc. for proper fit. Road Armor is not responsible for any damages to vehicle.

ⓘ IMPORTANT NOTICE

- Be sure to inspect and test fit your product to ensure proper fitment before having it coated, painted, bed lined, etc.
- Road Armor will not be responsible for the cost of coating your unit if any problems with fit or finish are not noted and addressed beforehand.

SAFETY FIRST!

- FOLLOW ALL INSTRUCTIONS, YOUR SAFETY AND THE SAFETY OF OTHERS IS MOST IMPORTANT.
- WEAR APPROPRIATE EYE PROTECTION AND EXERCISE CAUTION WHEN DRILLING / CUTTING

REQUIRED TOOLS

SAE & Metric Sockets and Wrenches
 Drill and 1/2 – 9/16 or Step bit
 Allen wrenches

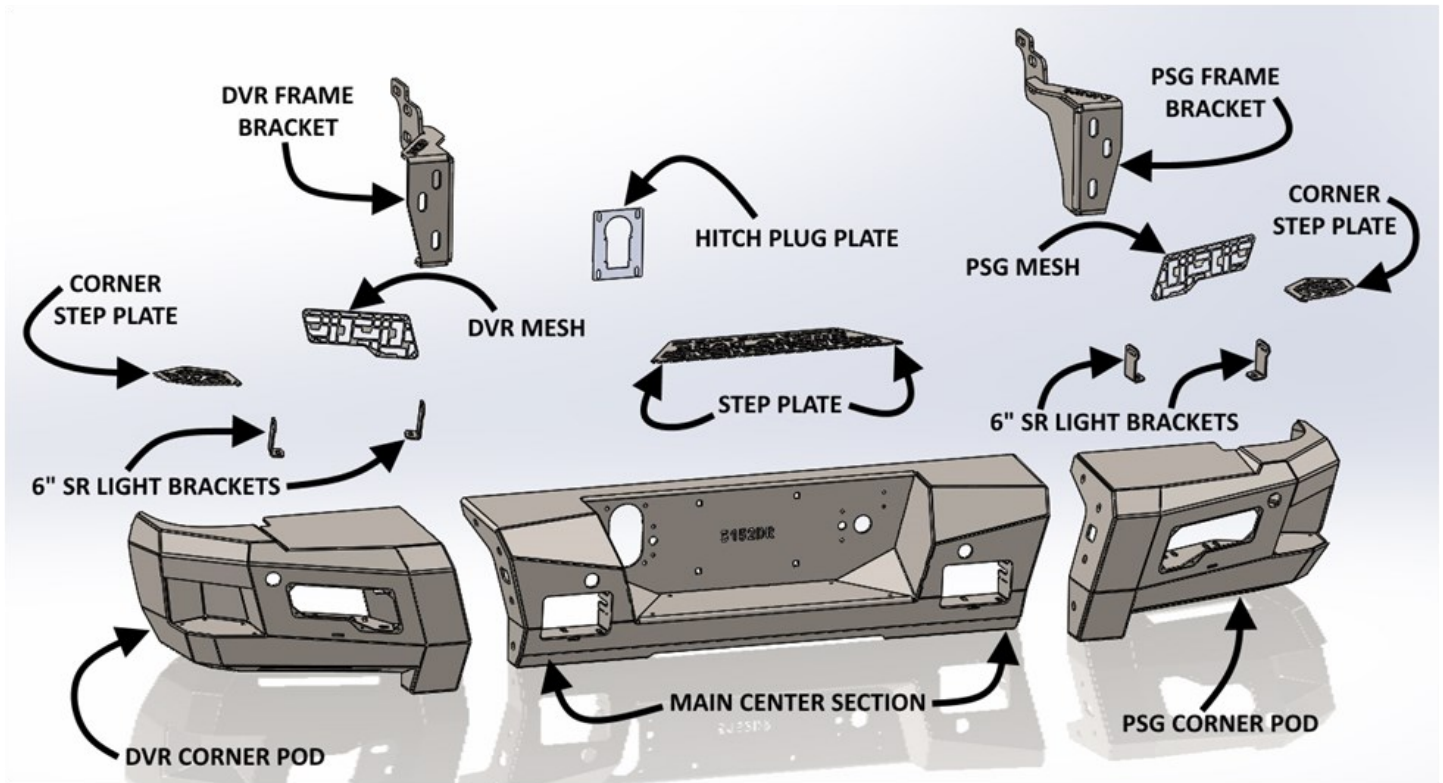
Black Spray Paint
 Tape Measure



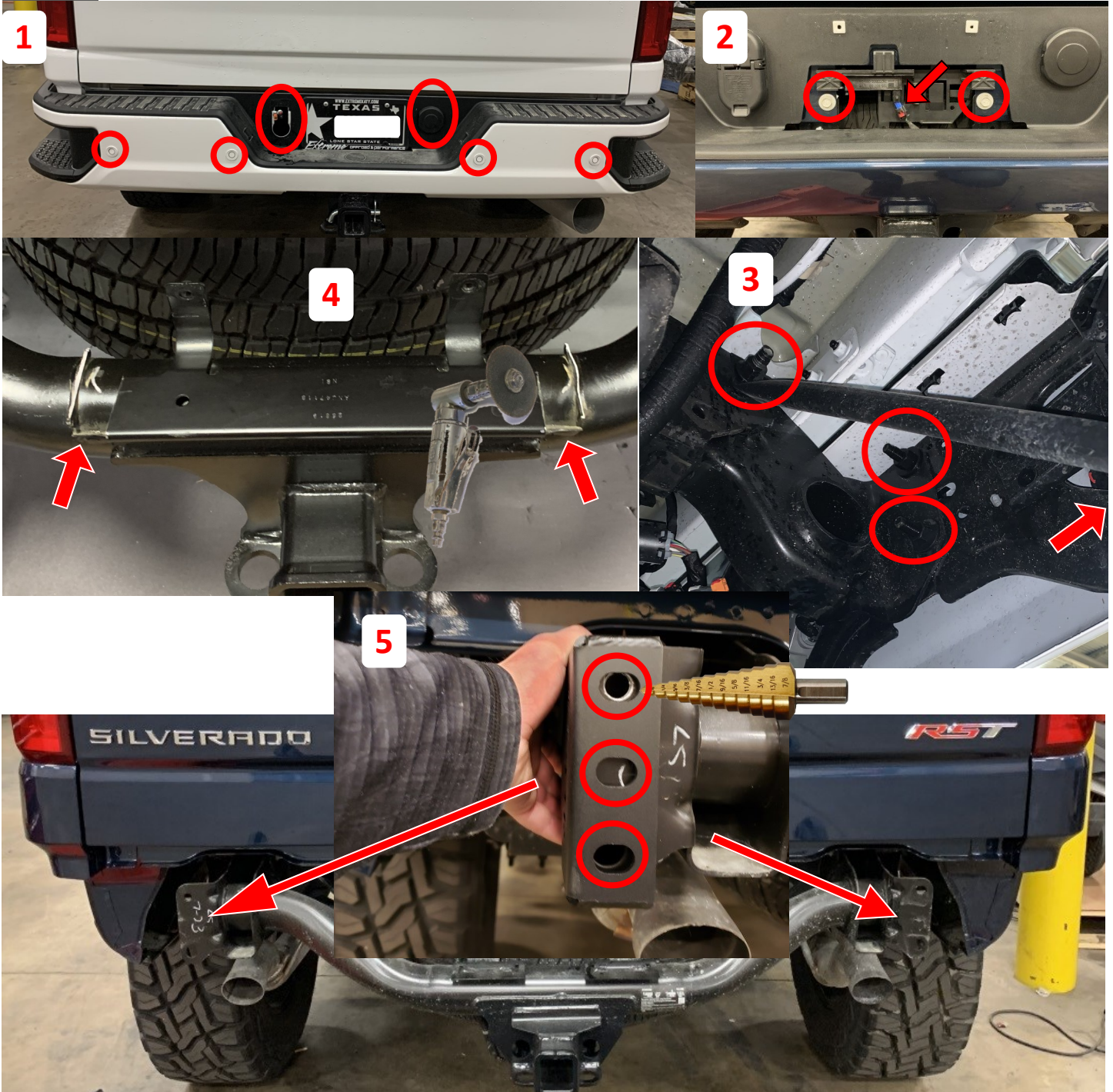
INCLUDED HARDWARE

4	1/4" License Plate Screws	16	7/16" x 1.250" OD Thru-Hardened Yellow Zinc Finish Steel USS General
4	1/4" (14) Screw Size License Plate Nut White Nylon	8	7/16"-14 Zinc Finish Grade 5 Finished Hex Nut
4	#8-32 Zinc Finish Steel with External Tooth Lockwasher K-Lock Nut	8	7/16" Yellow Zinc Finish High Alloy Medium Split Lock Washer
4	#8-32 x 3/4" ASTM F879 Hex Drive Grade 18-8 Stainless Steel Flat Socket Cap Screw	6	2" Single Bolt Tab (ZINC)
14	#10-24 x 1/2" ASTM F835 Hex Drive Zinc Finish Alloy Steel Button Socket Cap Screw	6	1/2" x 1.375" OD Thru-Hardened Yellow Zinc Finish Steel USS General Purpose Flat Washer
30	#10-24 Zinc Finish Steel with External Tooth Lockwasher K-Lock Nut	6	1/2" Yellow Zinc Finish High Alloy Medium Split Lock Washer
26	#10-24 x 3/4" ASTM F879 Hex Drive Grade 18-8 Stainless Steel Button Socket Cap Screw	6	1/2"-13 Yellow Zinc Finish Grade 8 Finished Hex Nut
4	1/4"-20 x 3/4" ASTM F835 Hex Drive Zinc Finish Alloy Steel Button Socket Cap Screw	6	1/2" Bolt 15/16" O.D. Zinc Pushnut Bolt Retainer
8	1/4" x 0.734" OD Low Carbon Zinc Finish Steel USS General Purpose Flat Washer	1	RA-SHIELD-RWB REV01
4	1/4"-20 Zinc Finish Grade A Finished Hex Nut	2	8 INCH ACCENT LIGHTS & MODULE
8	7/16"-14 x 1-1/2" Grade 5 Zinc Finish Hex Cap Screw		

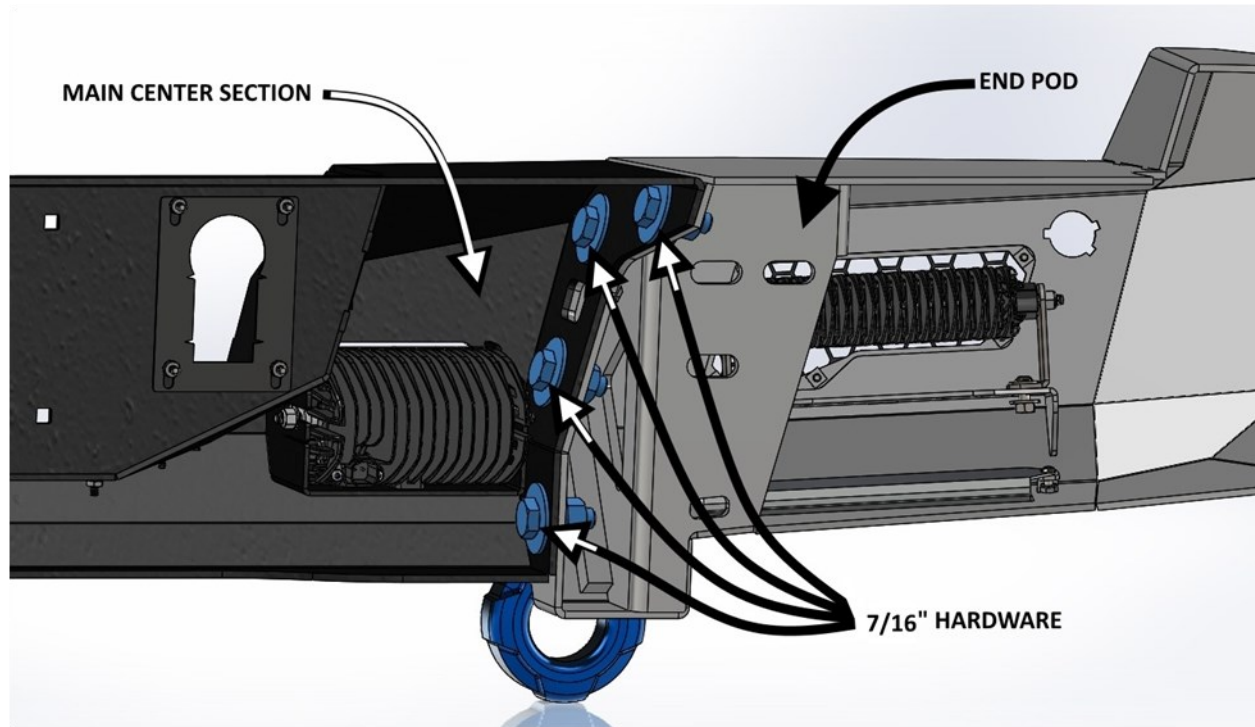
KIT iD REAR COMPONENTS



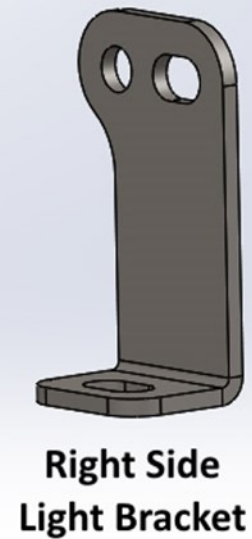
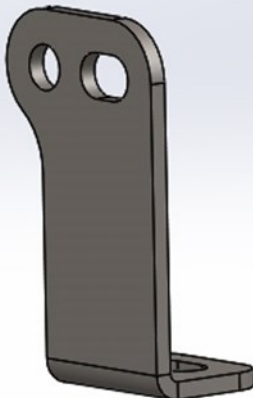
- 1 Unplug the trailer connector, license lights, antenna, blinds-pot and back-up sensors.
- 2 Remove the two bolts from the center of the bumper
- 3 Remove the 4 bolts on the backside of each bumper corner and remove bumper
- 4 Remove/cut-off small sections center bumper support bracket, from hitch attached to center of hitch. Doing so will allow for step plate bolt clearance during installation.
- 5 Using support bracket as template, drill 3 holes to 9/16" for each rear hitch bracket.



- 6** Assembly each Rear End Pods to Main Center Section using 4 – 7/16" x 1 1/2" Bolts, Nuts, Lock Washers & Washers.
- 7** Install Kit 8" Accent Light into each Kit End Pod using 2 - #10-24 x 1/2" Bolts & Lock Nuts.
- 8** Install Kit 6" Light Bar Brackets onto Kit End Pod Bracket using 2 – 1/4" x 3/4" Hardware supplied.

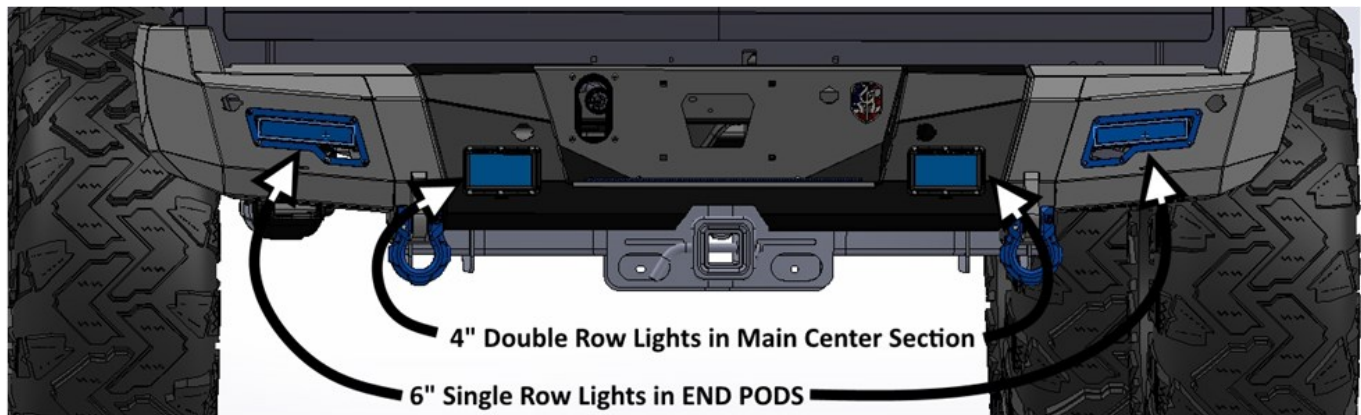


**Left Side
Light Bracket**

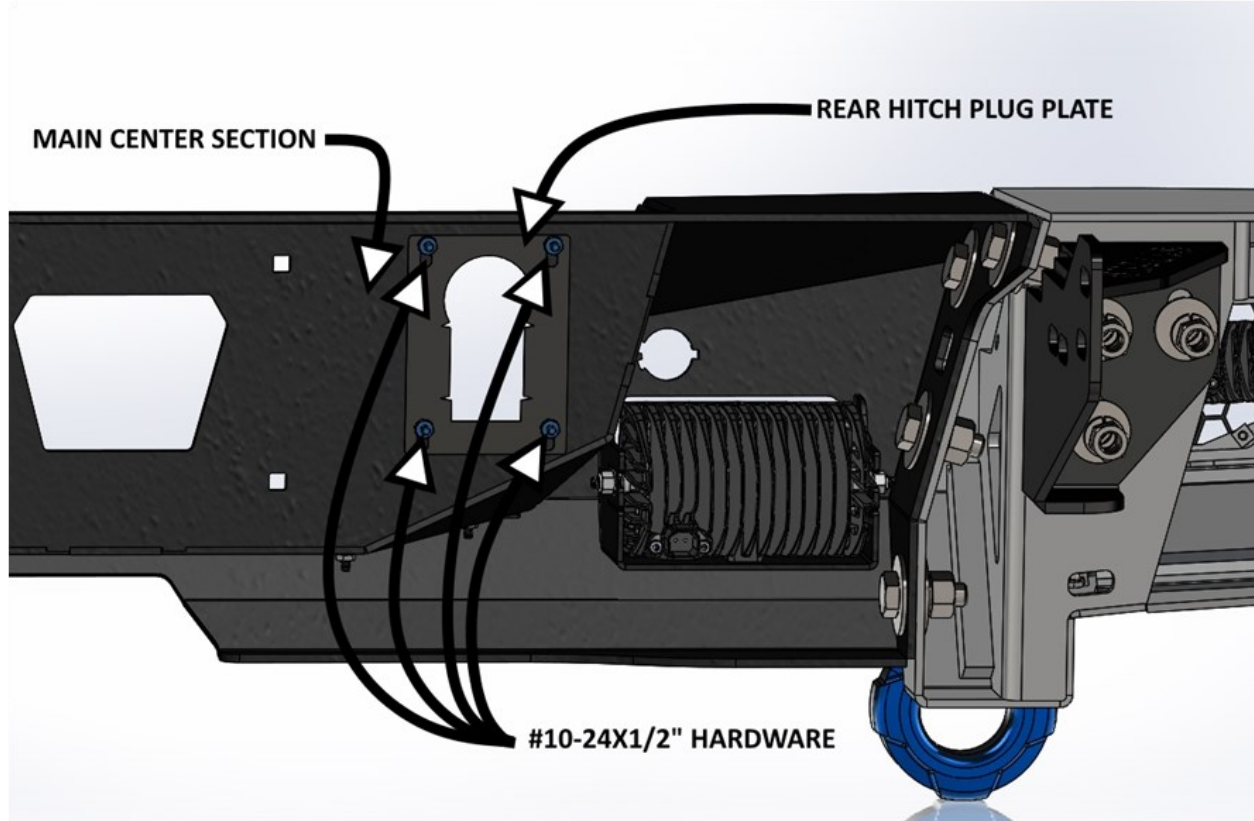


**Right Side
Light Bracket**

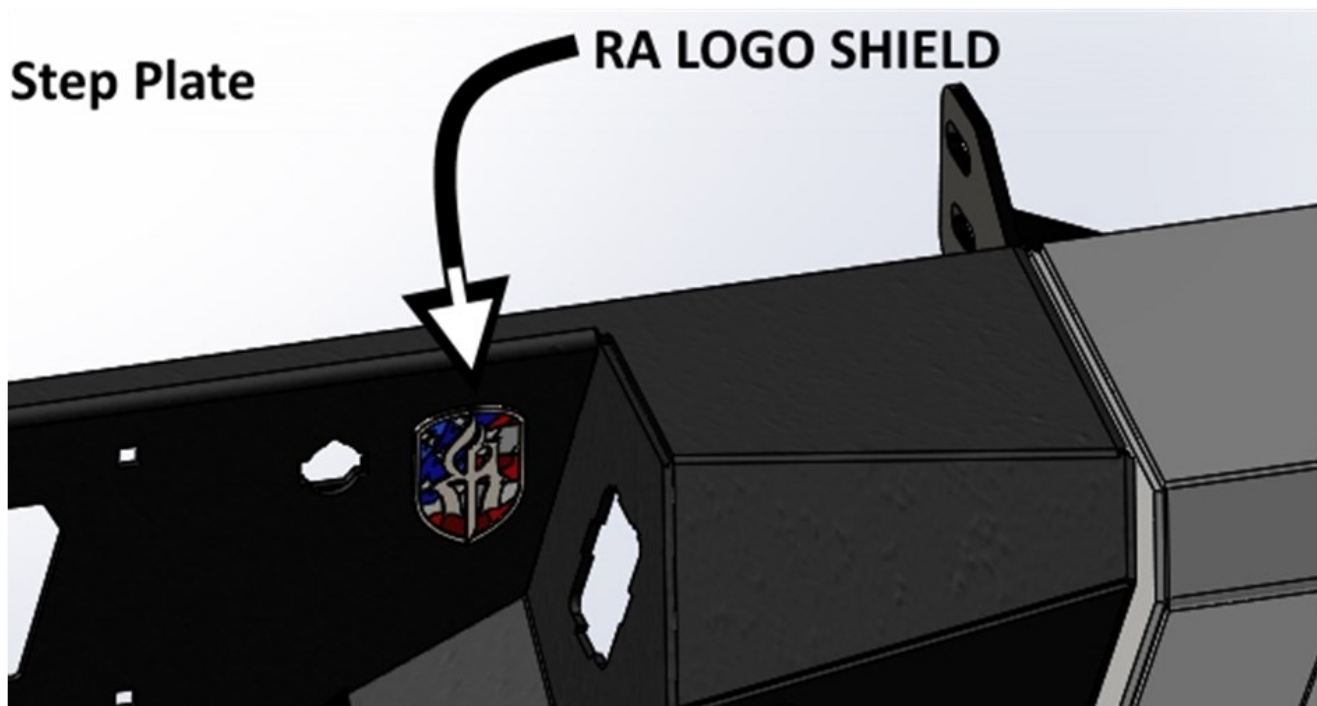
9 Install lights into Main Center Section and End Pods as Shown Below:



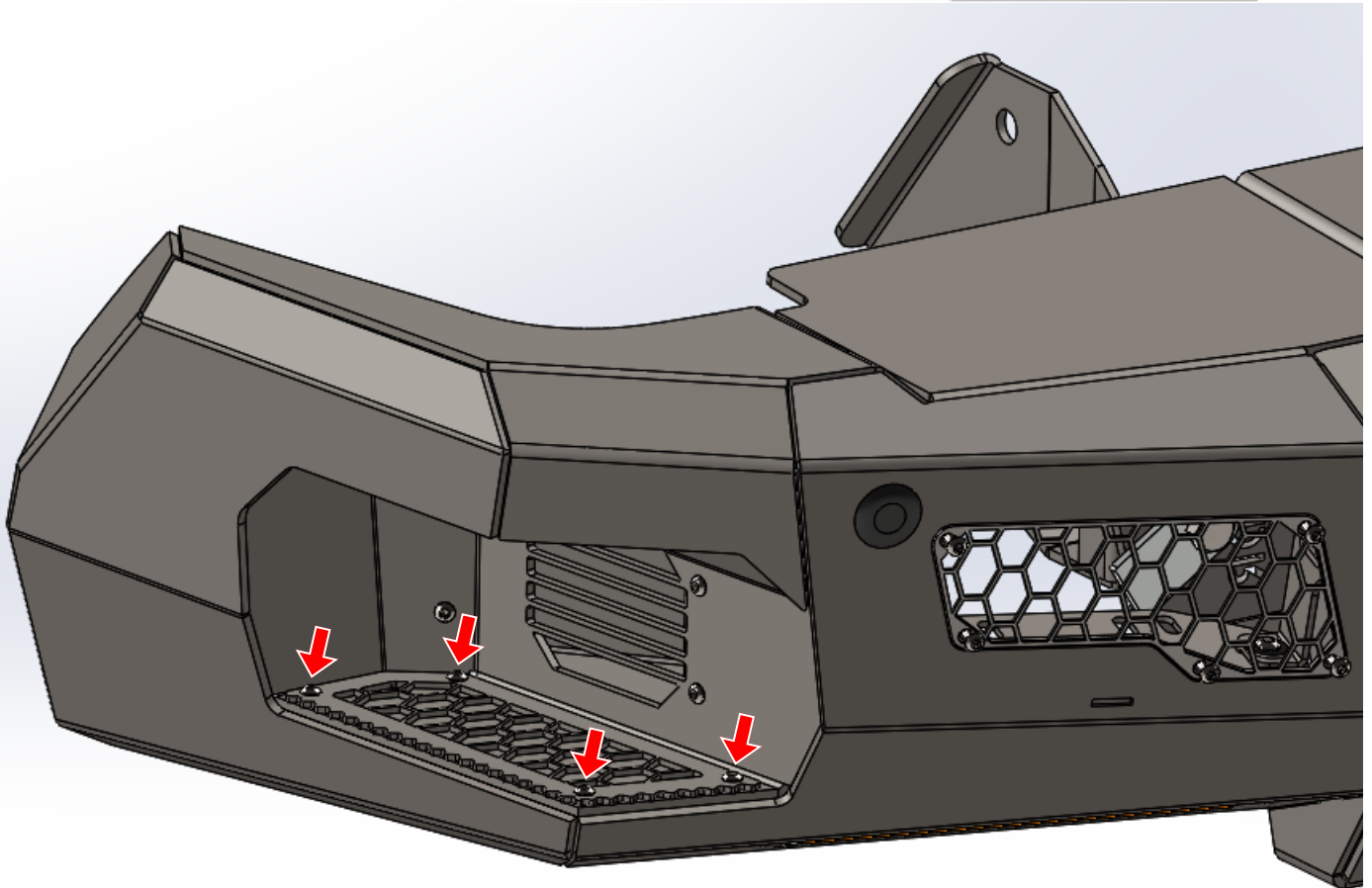
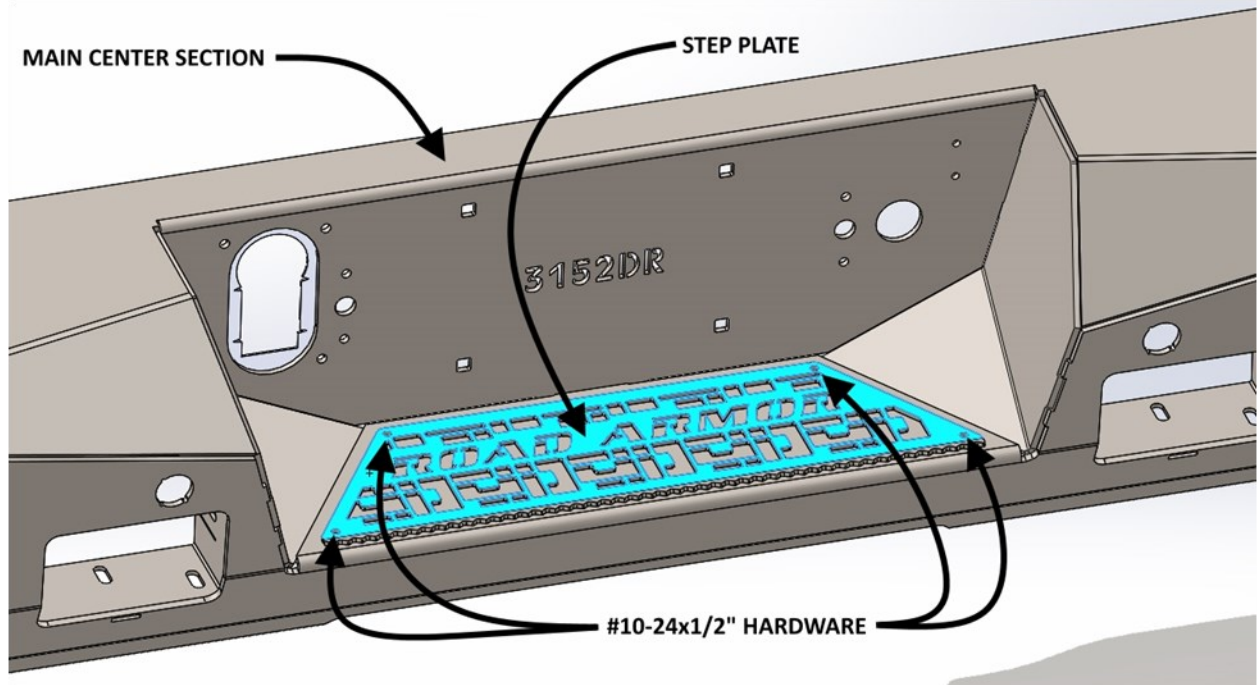
- 10** Install Hitch Plug Plate onto back of Main Center Section using 4 - #10-24x1/2" Bolts & Lock Nuts.



- 11** Install Kit RA LOGO SHIELD onto Main Center Section.



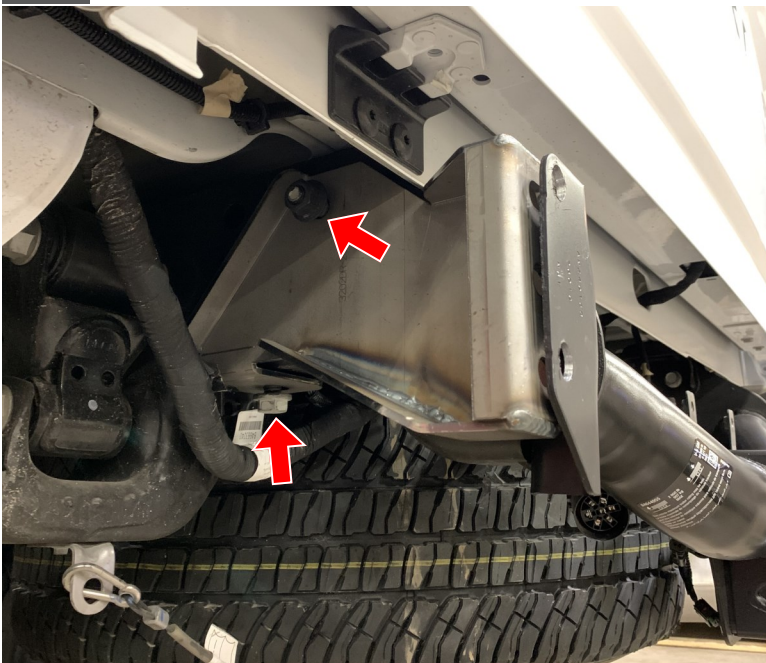
- 12** Install EACH Kit Step Plate onto Main Center Section & Corner Pods using 4 - #10-24x1/2" Bolts & Lock Nuts.



- 13** Install all OE Rear Sensor Housings, Sensors and
- 14** If equipped, using #10 hardware place blind-spot sensor into kit sensor bracket and install into each side of bumper corner pods using #10
- 15** Install all park sensors and harness into bumper.
- 16** Install factory license plate lights.

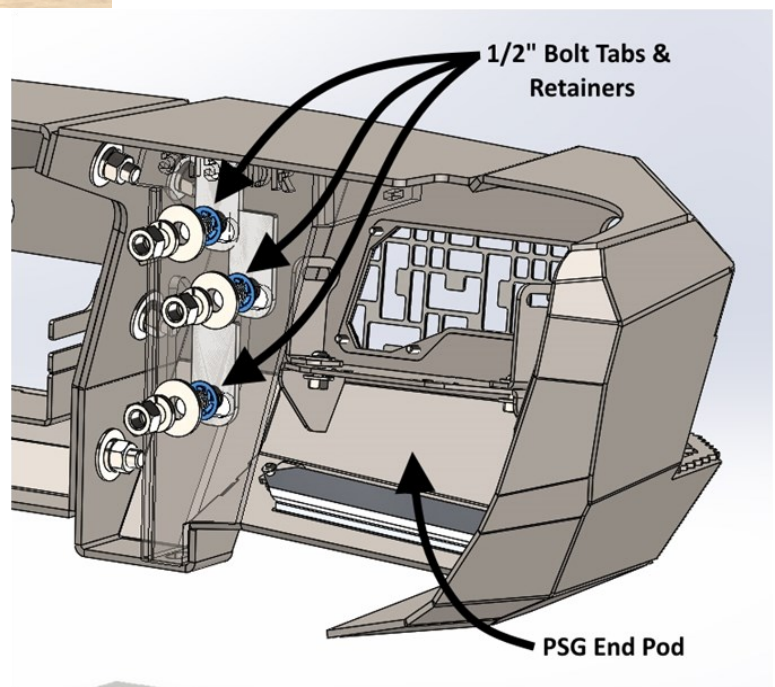


15

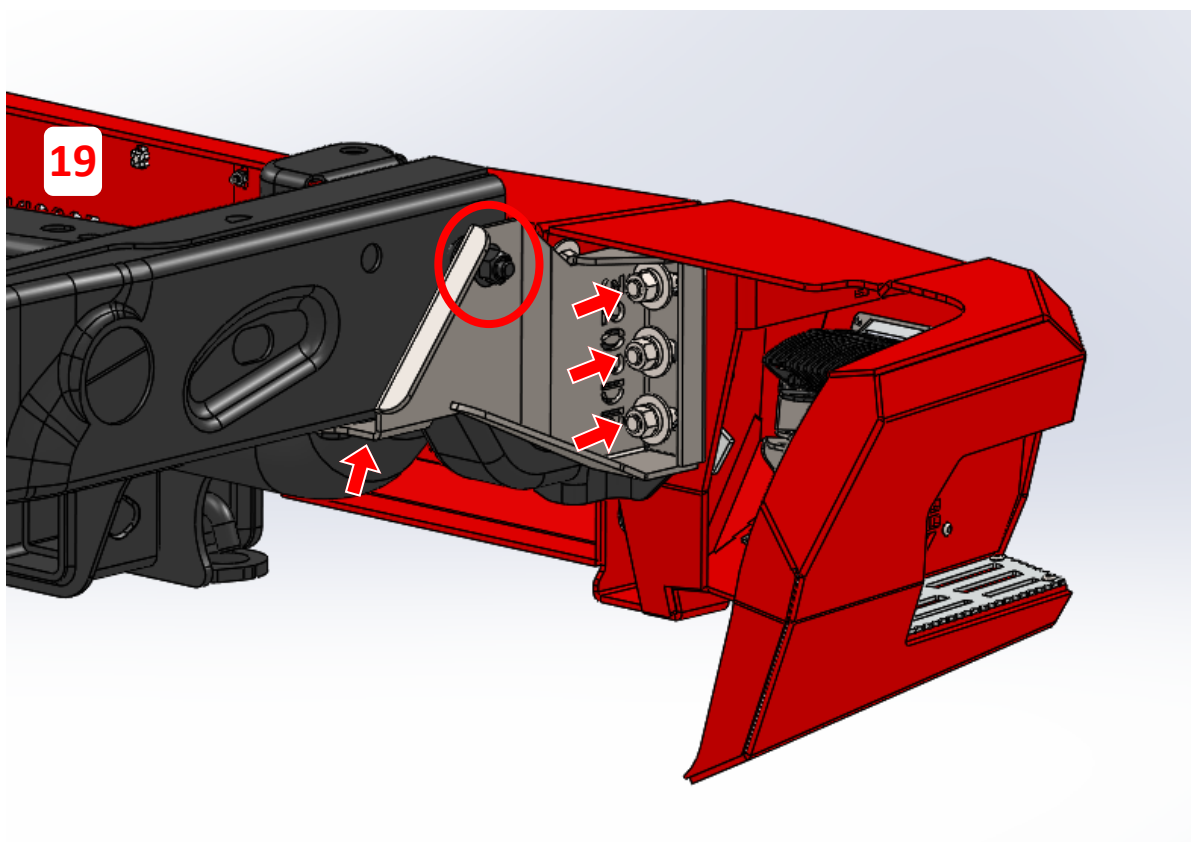


- 17** Install Kit Frame Bracing Brackets using OEM hardware.
- 18** Install kit 3 - 1/2" Bolt Tabs into each End Pod Bumper Bracket with 1/2" Retainer Washers. (against bumper)

NOTE: Reinstall the keyless entry sensor to the factory center bumper support bracket using zip ties. The sensors can now be plugged in.



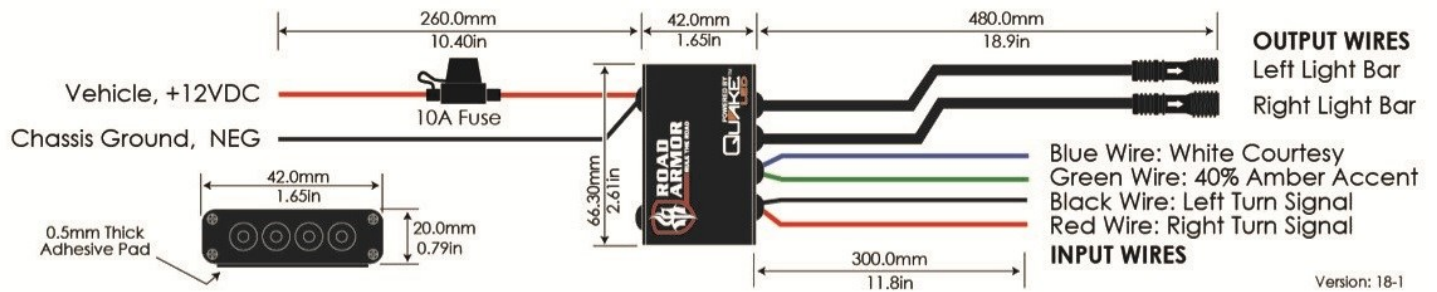
- 19** Install Bumper assembly onto Kit Frame Brackets using ½" Nuts, Lock Washers and Washers.





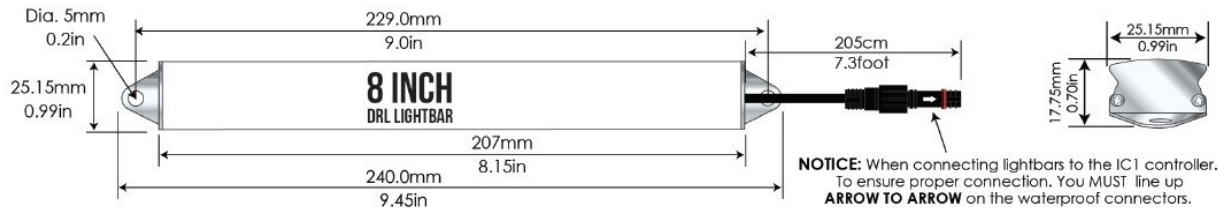
IC1 WHITE/AMBER - CONTROLLER

WIRING DIAGRAM/DIMENSIONS

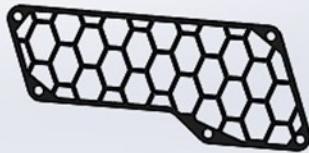
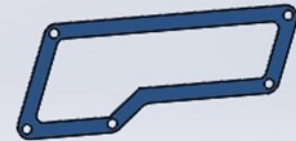


WHITE/AMBER - DRL 8 INCH LIGHTBAR

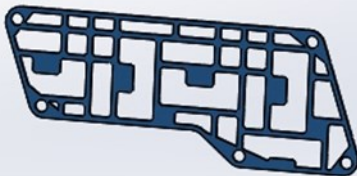
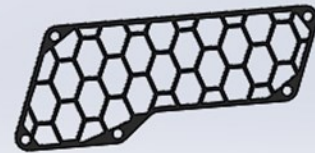
LIGHTBAR DIMENSIONS



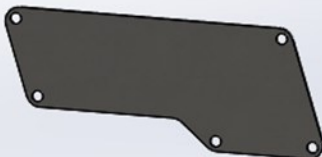
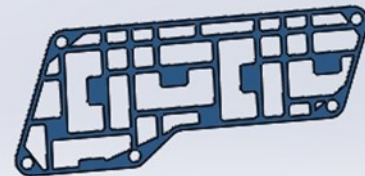
BEAUTY RING MESH KIT



HYVE MESH KIT



iD MESH KIT



BLOCK-OFF PLATE KIT

