

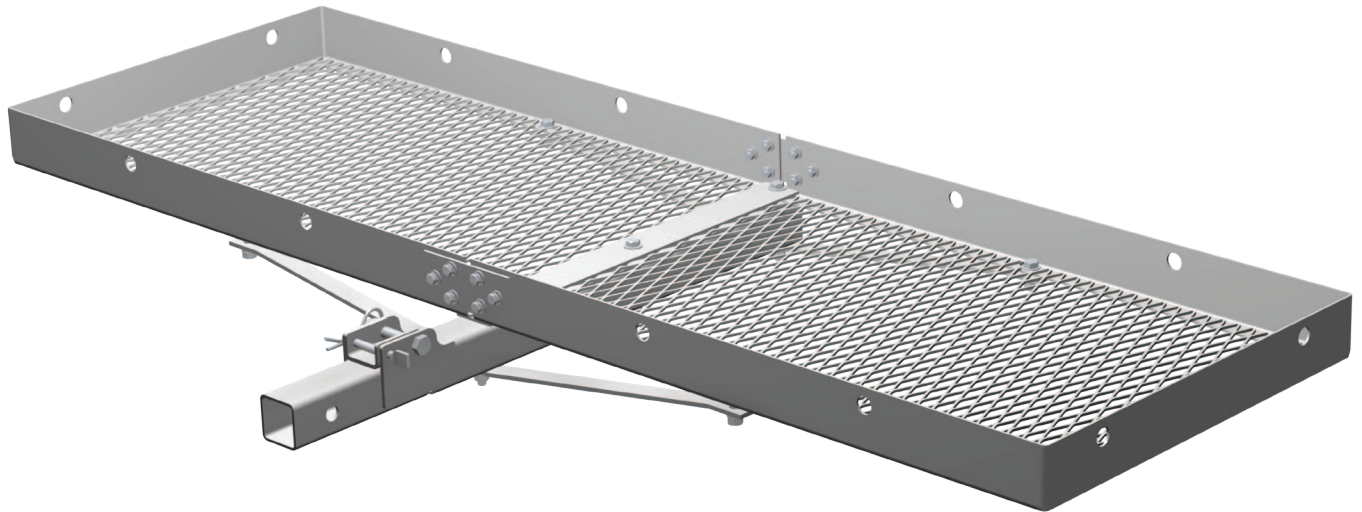


CURT™

The **FIRST** Name
in Towing Products™

18100 INSTRUCTIONS

FOLDABLE HITCH MOUNTED CARGO CARRIER (ALUMINUM)



WARNINGS

- Do not exceed maximum weight capacity of 500 lbs. when using 2" receiver tube
- Distribute weight evenly on platform
- This carrier is not intended for transporting people
- Do not carry loads wider or deeper than carrier
- Do not carry flammable items on carrier
- Do not allow exhaust fumes to blow directly on items. This is a fire hazard
- CURT Manufacturing, LLC is not responsible for any damage if warnings are not heeded

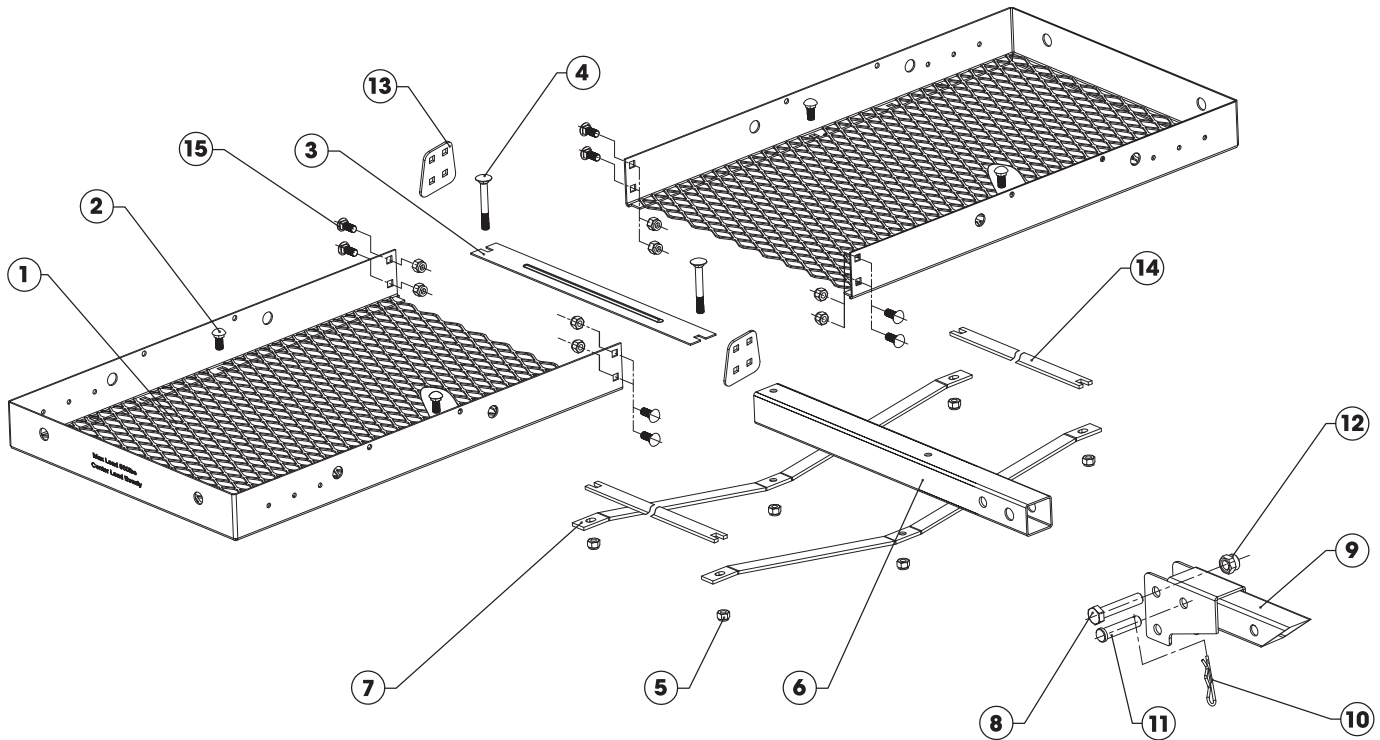
PARTS LIST

Item#	Qty	Description
1	2	Platform half
2	4	M10*30 carriage bolts
3	1	Flat brace
4	2	M10*83 carriage bolts
5	14	M10 locknut
6	1	Square tube bracket
7	1	5/8" X 3" hexagon head screw

Item#	Qty	Description
8	1	5/8" X 70mm clevis pin
9	1	Foldable connection bar
10	1	Hitch pin clip
11	2	Support bridge
12	1	5/8" Locknut
13	2	Brace
14	8	M10*20 carriage bolt

ASSEMBLY

- Put the support tube bracket (6) upwards, then insert both halves of the platform (1) between support tube and flat brace (3), align platform angle side holes and connect with M10*20 carriage bolt (14) and M10 locknut (5) (80% tightness).
- Connect flat brace (3), support tube (6) and support bridge (11) with M10*83 carriage bolts (4) and M10 locknuts (5) (80% tightness).
- Connect the platform (1), brace (13) and support bridges (11) with M10*30 carriage bolts (2) and M10 locknuts (5) (80% tightness).
- Align both halves of the platform (1), and then screw down all the bolts and locknuts.
- Insert the foldable connection bar (9) into support tube bracket (6), align all the holes and lock big holes with 5/8"x3" hexagon head bolts (7) and 5/8" locknuts (12). 5/8"x70mm clevis pin (8) is needed for horizontal rotation and rotating 90 degrees, insert clip (10) securely into the hole in clevis pin (8).



Scan
for more
information

Connect with us!

