



Supplemental Installation Instructions

ATTN: 2001 FORD EXPLORER SPORT TRAC 4 DR. OWNERS

RE: Rail clamping procedures (cover #112 only)

TOOLS NEEDED:

#10 Metric Wrench

Protective Eyewear

**1. PROPER RAIL INSTALLATION
PROCEDURE:**

This kit comes with four clamps that attach to factory threaded holes at front and rear of box. Begin by placing rail against the inside edge of box. Push rail to front until it stops against front of box. Front of rail should be flush with top of box. **See Figure 1.** **NOTE:** The rear corner edge of rail is designed to set on top of box rail, not down on inside edge of box. **See Figure 2.**

Next place a clamp at the front with slotted hole in line with existing factory hole in box wall. Adjust clamp to grip at approximately 6 grooves up. Use #10 metric wrench to tighten clamp bolt. **See Figure 2 and 3.** Repeat this at rear of rail also. Make sure rail is level. If rail is not - raise clamp up or down as needed and retighten.

CLAMP
ATTACHED TO
EXISTING
THREADED
HOLE IN BOX
WALL
TYPICAL AT
REAR ALSO

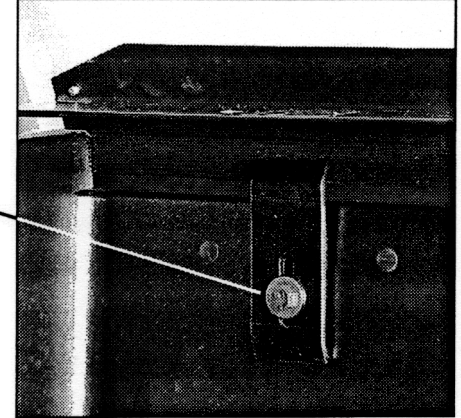


FIGURE 1

RAIL SETS ON
TOP OF BOX
AT REAR
CORNER

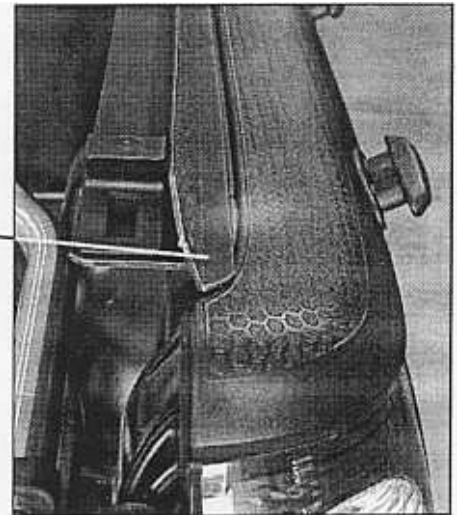


FIGURE 2

CLAMP
SHOWN WITH
GRIP EDGE
ON RAIL
GROOVES

BOLT WITH
WASHER
NOTE: SLOTTED
HOLE IN CLAMP
ALLOWS MOVING
CLAMP UP OR
DOWN TO LEVEL
RAIL WHEN
TIGHTENED

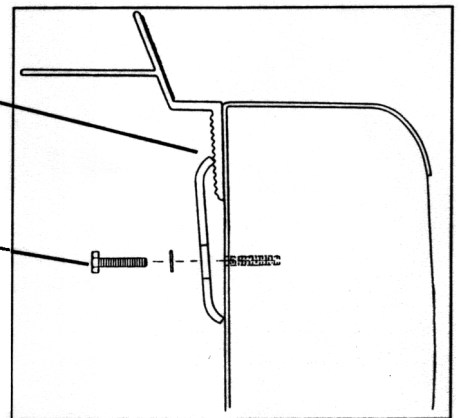


FIGURE 3