

# INSTALLATION INSTRUCTIONS

VEHICLE

CHEVROLET MALIBU  
OLDSMOBILE CUTLASS

EQUIPMENT REQUIRED:

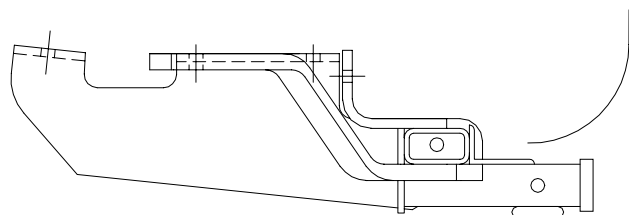
WIRING ACCESS LOCATION:

DRILL BITS: 1/2

HITCH REQUIRES 1/2" PIN AND CLIP.

WRENCHES: (TIGHTEN ALL FASTENERS WITH TORQUE WRENCH) 13mm, 3/4

3500 LB MAX GROSS TRAILER WT  
300 LB MAX TONGUE WEIGHT  
DO NOT EXCEED TOWING VEHICLE RATINGS



HITCH SHOWN IN PROPER POSITION

1/2-13 X 1-3/4 GR5

CARRIAGE BOLT

1/4 X 1-1/2 X 2 BLOCK  
(1540)LOCK WASHER  
NUTENLARGED  
ACCESS HOLE

M8 X 1.25 X 35mm CL9.8

BOLT ASSEMBLY

CONICAL TOOTHED WASHER  
NUT

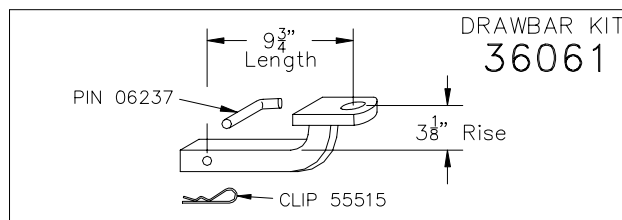
DRILLED HOLE

ENLARGED  
ACCESS HOLEEXISTING  
HOLES

1/2-13 X 1-3/4 GR5  
CARRIAGE BOLT  
1/4 X 1-1/2 X 2  
BLOCK (1540)  
LOCK WASHER  
NUT

1/2-13 X 1-3/4 GR5  
CARRIAGE BOLT  
1/4 X 1-1/2 X 3 BLOCK  
(1171)  
LOCK WASHER  
NUT

1. REMOVE LOWER, INBOARD M8 BUMPER BOLT ON DRIVER'S SIDE AND RETURN TO VEHICLE OWNER.
2. ENLARGE DIAMOND SHAPED HOLE IN BOTH FRAME RAILS TO ACCEPT BLOCKS AND CARRIAGE BOLTS.
3. FISHWIRE CARRIAGE BOLTS AND BLOCKS THROUGH ENLARGED ACCESS HOLE INTO EXISTING HOLES IN FRAME AS SHOWN.
4. RAISE HITCH INTO POSITION AND INSTALL 1/2" LOCKWASHERS, NUTS AND M8 FASTENER AS SHOWN.
5. USING HITCH AS TEMPLATE DRILL FORWARD ATTACHMENT ON PASSENGER SIDE.
6. FISHWIRE CARRIAGE BOLT AND BLOCK THROUGH ENLARGED ACCESS HOLE AS SHOWN. INSTALL 1/2" LOCKWASHER AND NUT. TIGHTEN M8 CL9.8 FASTENERS TO 25 LB-FT  
TIGHTEN 1/2" GR5 FASTENERS TO 75 LB-FT



USE ONLY THE DRAWBAR SHOWN FOR CORRECT BUMPER CLEARANCE AND HEIGHT.  
DRAWBAR MUST BE USED IN THE RISE POSITION ONLY.

THIS PRODUCT COMPLIES WITH SAFETY SPECIFICATIONS AND REQUIREMENTS FOR CONNECTING DEVICES AND TOWING SYSTEMS OF THE STATE OF NEW YORK, V.E.S.C. REGULATION V-5 AND SAE J684.

APPROX WEIGHT (LB.)

34

FASTENER KIT

01130-992

NOTE: Check hitch frequently, making sure all fasteners and ball are properly tightened. If hitch is removed, plug all holes in trunk pan or other body panels to prevent entry of water and exhaust fumes. A hitch or ball which has been damaged should be removed and replaced. Observe safety precautions when working beneath a vehicle and wear eye protection. Follow car maker's specs for maximum trailer weight and tongue weight. Do not cut access or attachment holes with a torch.

**TOWING PRODUCTS**  
Plymouth, Michigan