



PERFORMANCE EXHAUST SYSTEMS

GP306 CHROME HEADER

DODGE DAKOTA TRUCK 3.9L 2WD

GIBSON HEADERS ARE 50 STATE SMOG LEGAL

*Thank you very much for purchasing our Gibson header
for your vehicle.*

*If you need further assistance, please do not hesitate to call our Technical
Department at (800) 528-3044
Monday through Friday
8:00 a.m. to 5:00 p.m. PST.*

1270 WEBB CIRCLE CORONA, CA 92879

WARNING! – Do not rely on bumper jacks or chassis jacks for support during header installation. The subject vehicle should be raised and supported with jacking equipment and jack stands or ramps intended for undercarriage auto maintenance. It is extremely dangerous to work under an improperly raised and/or supported vehicle.

WARNING! - Make certain there is ample clearance around components such as brake lines, brake proportioning valves, fuel lines, hoses and pumps, and electrical components and wires. In some cases it may be necessary to relocate items that may be adversely affected by exhaust system heat.

NOTE: These procedures are documented on factory standard-equipped vehicles with original configuration compliance. Any modification of the subject vehicle may dictate modification to these procedures.

**IT IS NOT UNUSUAL WHEN INSTALLING HEADERS TO GET A BURNING SMELL.
THIS IS NORMAL AND IT WILL GO AWAY!**

CAUTION! Gloves or other protection should be worn to protect installer from burns due to hot exhaust components during these final steps!

IT IS CRITICAL that all bolts be re-tightened **HOT** after about 20 minutes of operation to prevent gasket failure.

NOTE: HEADERS ARE NOT MEANT TO SERVE AS “EXHAUST SYSTEM SUPPORT HANGERS”. Additional hangers may need to be added at the time of the installation of the headers so that THE EXHAUST SYSTEM SUPPORTS ITSELF when the collector bolts are removed. HEADERS THAT HAVE “SAGGED” DUE TO THE LACK OF SUFFICIENT EXHAUST SYSTEM SUPPORT WILL NOT BE REPLACED UNDER WARRANTY!

NOTE: Header bolts should be inspected for tightness from time to time to ensure optimum gasket life. The bolts will **STRETCH** some at first due to the exhaust heat, so they'll loosen **WITHOUT TURNING** until they “take a set”. (Bolts hard enough not to stretch would **BREAK!**)

E.O. STICKER INFORMATION

Place the sticker in an area that is protected from high wear or frequent exposure to dirt, water, etc. Make sure the area is clean before applying. E.O. are usually updated annually, your E.O.sticker does not need to be replaced to reflect changes that are made. Smog inspection stations are updated regularly.

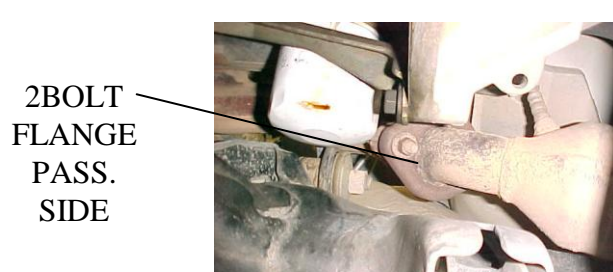
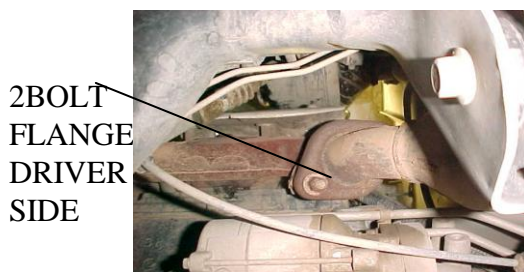
INSTALLATION INSTRUCTIONS

SUGGESTED TOOLS

10MM, 12MM, 15MM SOCKETS AND WRENCHES, VARIOUS LENGTH EXTENTIONS JACK, JACK STANDS, WD-40, ANTI-SEIZE, WIRE BRUSH

NOTE: Installation of these headers requires an adequate workspace, general mechanic's tools general mechanical "know how". You should carefully read these instructions before attempting to install these headers.

1. Place vehicle in a location where the floor is solid and flat, with adequate lighting. Do not attempt to work on a hot engine. Heat causes metal to expand and makes removal of fasteners difficult.
2. Disconnect the battery cables from the battery.
3. Block rear tires with blocks so the truck will not roll back and forth.
4. Jack up the front of the vehicle so you can gain access to the exhaust manifolds 2-bolt flanges. Lower the vehicle onto large base jack stands. Never rely on just the jack to hold up your vehicle.
5. Spray all exhaust manifold fasteners and fittings with Wd-40 or some other type of penetrating lube.
6. From underneath the vehicle disconnect the Y-pipe from the exhaust manifolds, using a 15mm socket or wrench.

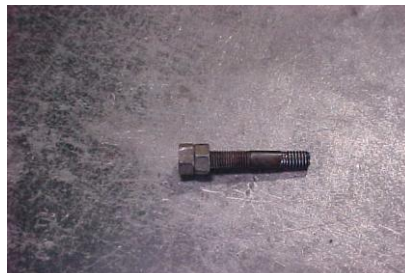


7. From the top on the passenger side, remove your stock air box using a 10mm socket or wrench. Do not discard your factory air box hardware you will re-use it.
8. After removing your factory air box you can now get to the passenger side manifold. Remove the heat shield from the manifold using a 13mm socket or wrench. After removing the heat shield, you can now gain access to the exhaust manifold nuts and bolts. Using a 13mm socket or wrench remove these nuts and bolts. After removing these nuts and bolts gently slide the manifold towards the passenger side fender. Once you have the manifold off of the exhaust studs you can pull it out from the top.

STOCK
AIR
BOX



9. Remove the two factory studs from the cylinder head, by taking the two nuts you just removed and putting them both on one stud, then tighten them together. Then with your 13mm wrench turn the back nut counter clockwise until it is removed. Repeat the same process with the other stud.



10. On the driver's side from the top remove the heat shield on the manifold using a 13mm socket or wrench. After removing the heat shield, you can now remove the four exhaust manifold nuts and bolts. After removing these gently slide the manifold towards the drivers side fender then remove from the top.
11. After your drivers side manifold is out remove the two studs that are in the cylinder head just as you did on the passenger side.
12. Before installing your new headers take a wire brush and clean any deposits off the cylinder head on both sides.
13. Working on the drivers side install your new header with gasket onto the cylinder head with the hardware provided. Put a little anti-seize on each bolt before installing them into the cylinder head. Put all bolts in a few turns before tightening. Using a 12mm socket or wrench, you can now tighten your driver's side header to 25 ft. lbs.

Drivers
Side Gibson
Header



14. Now working on the passenger side installs your new header with gasket onto the cylinder head with the hardware provided. Put a little anti-seize on each bolt before installing them into the cylinder head. Put all bolts in a few turns before tightening. Using a 12mm socket or wrench, you can now tighten your passenger side header to 25 ft. lbs.

Passenger
Side
Gibson
Header

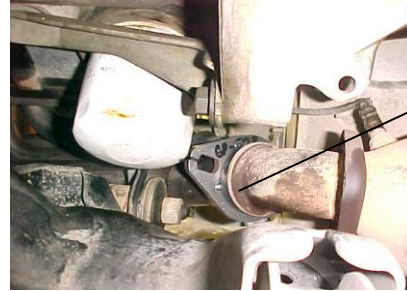


15. Re install your factory air box using the factory hardware.
16. From underneath the vehicle using the hardware provided, Re-attach your factory y-pipe to the headers. Put both sides on loosely before tightening. Now tighten up both sides.

2BOLT
FLANGE
DRIVER
SIDE



2BOLT
FLANGE
PASS.
SIDE



17. **AFTER 200 MILES YOU MUST RE-TORQUE YOUR NEW HEADERS.**
18. **IT IS NORMAL TO SMELL A BAD BURNING ODOR FOR APPROXIMANTLY 200-300 MILES.**

PARTS LIST **QTY PART#**

Drivers side header	1	HE-306D
Passenger side header	1	HE-306P
Header gasket	2	9113
5/16-18 header bolts	8	951
Star washers for header bolts	8	225
Collector bolts 3/8" x 2 1/2"	4	345
Collector nuts 3/8" x 16	4	5057
Lock washers	4	9033
3/8" flat washers	8	9565

What DOES work is this:

Go over the bolts again after the first DAY of driving (or about 100 miles- whichever comes first), then after the first WEEK, after the first MONTH, and then EVERY 6 MONTHS. Our exclusive gaskets are specially made so that the cylinder head SHOULD begin to melt before the gaskets can burn up. About the only way to kill these gaskets is to let the headers get loose and then keep driving with a leak. Due to varying conditions between geographical locations and usage, we strongly recommend having the engine re-tune at a reputable tune-up shop after the installation of the headers. Doing so will ensure that you get the maximum benefit from the installation of the headers.

GIBSON PERFORMANCE strives to deliver the highest quality materials, workmanship, and service. Please do not hesitate to call our technical line if you have a question or experience a problem.

When these instructions are followed precisely, you will find the installation of your exhaust system to be relatively simple. We cannot over emphasize the importance of adhering strictly to this proven approach, as it will virtually eliminate any difficulties, which you might otherwise encounter.

Due to restricted room in the engine compartment, your headers may come close to certain body and chassis components. This is a normal condition for an installation of this type

WARNING: Make certain you have enough clearance around brake, fuel, and electrical lines, etc. In some cases, it may be necessary to relocate items which might be adversely affected by exhaust heat.

WARNING: Installation of any type of "wrapping" material onto the headers will destroy the heat dissipation properties of the tubing, causing premature deterioration of the metal and subsequent failure. Use of any "wrapping" material will void the warranty.

LEGAL STATUS: Installation of headers on vehicles with catalytic converters and/ or other emission control equipment must be accomplished in accordance with all government regulations pertaining to such emissions standards. These headers are smog legal.