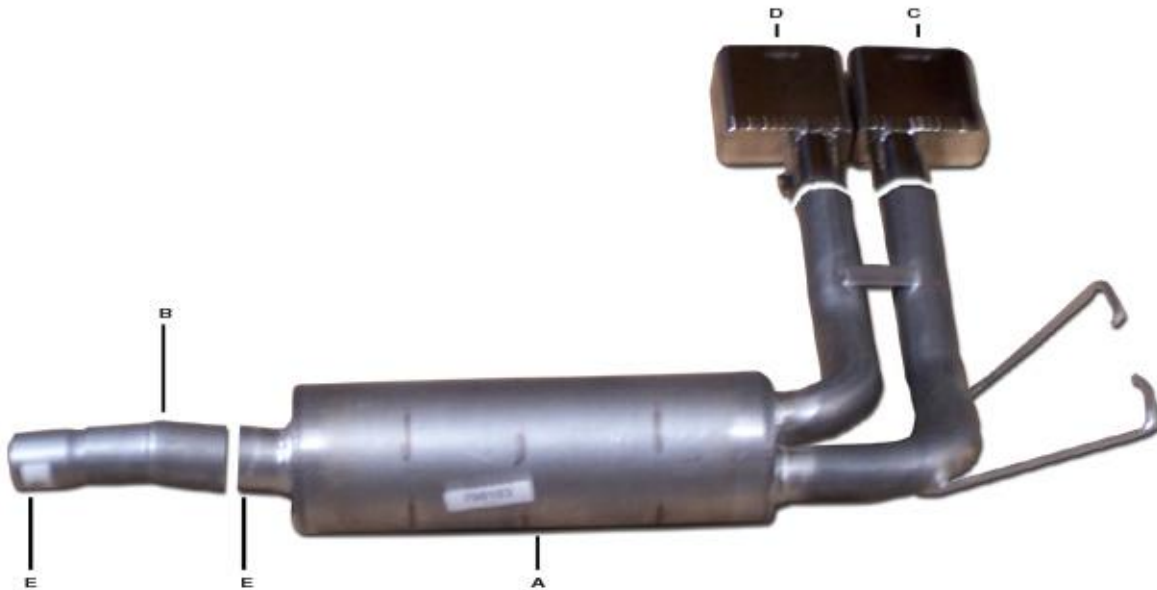




PERFORMANCE EXHAUST SYSTEMS

INSTRUCTION MANUAL
SUPER TRUCK STAINLESS EXHAUST SYSTEM
FORD F150/F250 TRUCK 4.2L, 4.6L, 5.4L
STANDARD CAB & SUPERCAB SHORT BED & LONG BED 2/4WD
4.6L, 5.4L SUPERCREW, SHORT BED 2/4WD
PART # 69516



ITEM	PART #	QUANTITY	DESCRIPTION
A	784-700103S	1	SAINLESS MUFFLER & TAILPIPE ASSEMBLY
B	785-70023S	1	2 1/2" STAINLESS HEADPIPE
C	500366	1	STAINLESS SUPER TRUCK TIP
D	500365	1	STAINLESS SUPER TRUCK TIP
E	5757	2	2 1/2" CLAMP

WILL NOT FIT HEAVY DUTY TRUCK.

Thank you very much for purchasing our GIBSON PERFORMANCE EXHAUST SYSTEM for your vehicle. If you need further assistance, please do not hesitate to call our Technical Department at 1-800-528-3044, Monday through Friday,
8:00 am to 5:00 pm.

EXHAUST INSTALLATION #69516

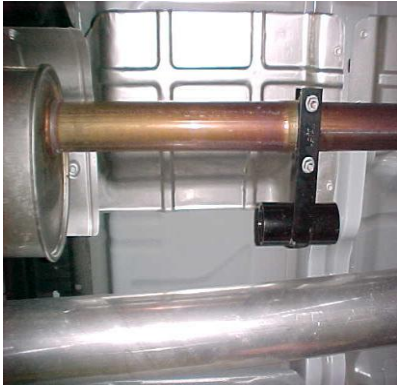
WHEN INSTALLING THIS EXHAUST SYSTEM MAKE SURE YOU USE ALL THE PROPER SAFTEY PRECAUTIONS. USE JACK STAND TO SUPPORT THE TRUCK WHILE OFF THE GROUND. SET PARKING BRAKE, BLOCK THE TIRES AND USE SAFTEY GLASSES AND GLOVES.

DO NOT WORK WITH HOT PIPES!

SUGGESTED TOOLS:

HACKSAW, JACKSTAND, 1/2" WRENCH & SOCKET, 9/16" SOCKET & WRENCH, TAPE MEASURE, WD-40

TO REMOVE STOCK EXHAUST SEE BELOW FOR PROPER VEHICLE APPLICATION.



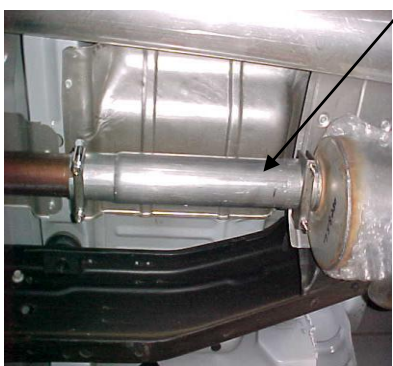
EXTENDED CAB-SHORT & LONG BED
STANDARD CAB- LONG BED
SUPERCREW- SHORT BED

MEASURE 43" FROM THE REAR OF THE MUFFLER FORWARD AND CUT. YOU WILL BE REMOVING THE STOCK ALIGNMENT PIN. CUT STOCK EXHAUST OFF AND USE WD-40 ON ALL HANGERS. LEAVE RUBBER GROMMETS IN PLACE.



ALL TRUCKS

INSTALL MUFFLER ASSEMBLY # A ONTO FACTORY HEADPIPE, AND ATTACH USING CLAMP # E. MUFFLER OUTLET SHOULD BE LEVEL. USE A JACKSTAND TO SUPPORT MUFFLER. DO NOT TIGHTEN. INSERT WELDED HANGERS INTO RUBBER GROMMETS.



INSTALL NEW HEADPIPE # B AND ATTACH USING CLAMP # E TO FACTORY PIPE.

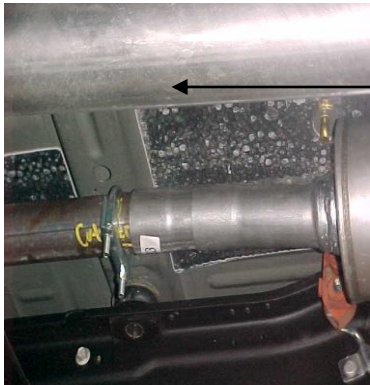


INSTALL THE STAINLESS STEEL TIP. USE ANY ALUMINUM OR STAINLESS STEEL CLEANER TO POLISH TIP. NOW TIGHTEN ALL CLAMPS AND BOLTS.

STANDARD CAB, SHORT BED

UNCLAMP STOCK MUFFLER. YOU WILL LEAVE THE FACTORY ALIGNMENT PIN IN PLACE. FOR EASIER REMOVAL HEAT UP CLAMP. CUT STOCK EXHAUST OFF AND USE WD-40 ON ALL HANGERS. LEAVE RUBBER GROMMETS IN PLACE.

CUT 4" OFF THE GIBSON HEADPIPE # B. INSTALL HEADPIPE TO THE FACTORY HEADPIPE AND INSERT INTO FACTORY ALIGNMENT PIN AND ATTACH WITH CLAMP # D.



MAKE SURE YOU AT LEAST A 1" CLEARANCE AWAY FROM ALL BRAKE LINES, FUEL LINES, SHOCKS, TIRES, ETC.