

# INSTALLATION INSTRUCTIONS

VEHICLE

HITCH NO.

FORD F-SERIES PICKUP TRUCK

75065

FORD SUPERCREW PICKUP TRUCK

87183

EQUIPMENT REQUIRED:

WIRING ACCESS LOCATION: PU1 &amp; PU2

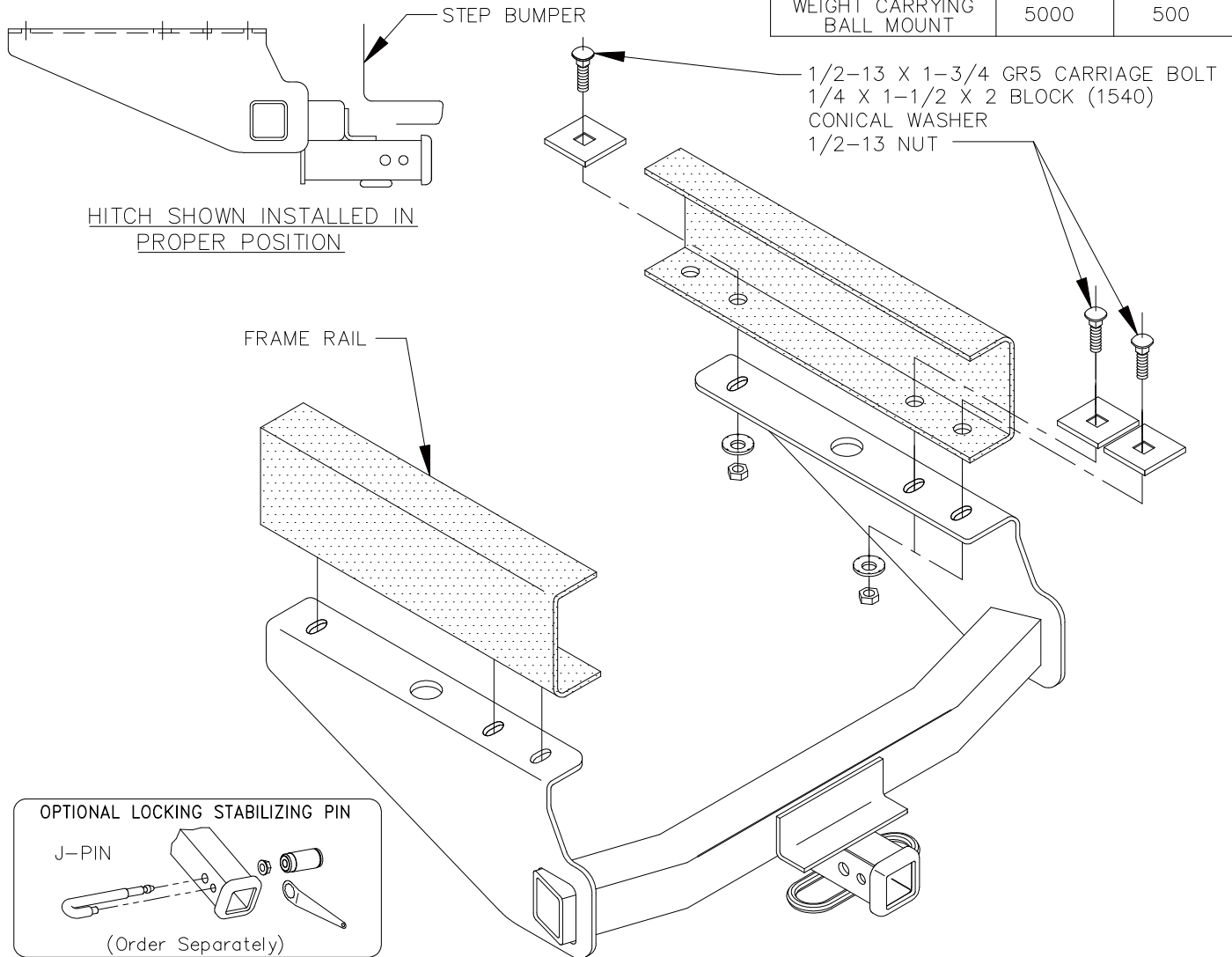
DRILL BITS: NONE

HITCH REQUIRES 5/8" PIN AND CLIP IF STABILIZING PIN IS NOT INSTALLED.

WRENCHES: (TIGHTEN ALL FASTENERS WITH TORQUE WRENCH) 7/8

DO NOT EXCEED LOWER OF  
TOWING VEHICLE MFR'S RATINGS OR

HITCH TYPE ▼	MAX GROSS TRLR WT(LB)	MAX TONGUE WT(LB)
WEIGHT DISTRIBUTING	8000	800
WEIGHT CARRYING BALL MOUNT	5000	500



USES EXISTING HOLES IN FRAME – NO DRILLING REQUIRED.

1. SCRAPE WAX COATING OFF OF FRAME RAILS AROUND THE EIGHT BOLT HOLES.
2. INSERT HEX BOLT, HARDENED FLAT WASHER, AND BLOCK IN FORWARD AND REAR MOST ATTACHMENT HOLES IN EACH FRAME RAIL AS SHOWN ABOVE.
3. RAISE HITCH INTO POSITION AND LOOSELY ATTACH FASTENERS TO BOLTS AS SHOWN ABOVE.
4. CENTER HITCH AND INSTALL REMAINING FASTENERS AS SHOWN ABOVE.

TIGHTEN ALL 1/2 GR5 FASTENERS TO 75 LB.-FT.

THIS PRODUCT COMPLIES WITH SAFETY SPECIFICATIONS AND REQUIREMENTS FOR CONNECTING DEVICES AND TOWING SYSTEMS OF THE STATE OF NEW YORK AND V.E.S.C. REGULATION V-5.

APPROX WEIGHT (LB.)

FASTENER KIT

46

F75065

NOTE: Check hitch frequently, making sure all fasteners and ball are properly tightened. If hitch is removed, plug all holes in trunk pan or other body panels to prevent entry of water and exhaust fumes. A hitch or ball which has been damaged should be removed and replaced. Observe safety precautions when working beneath a vehicle and wear eye protection. Follow car maker's specs for maximum trailer weight and tongue weight. Do not cut access or attachment holes with a torch.

**TOWING PRODUCTS**  
Plymouth, Michigan