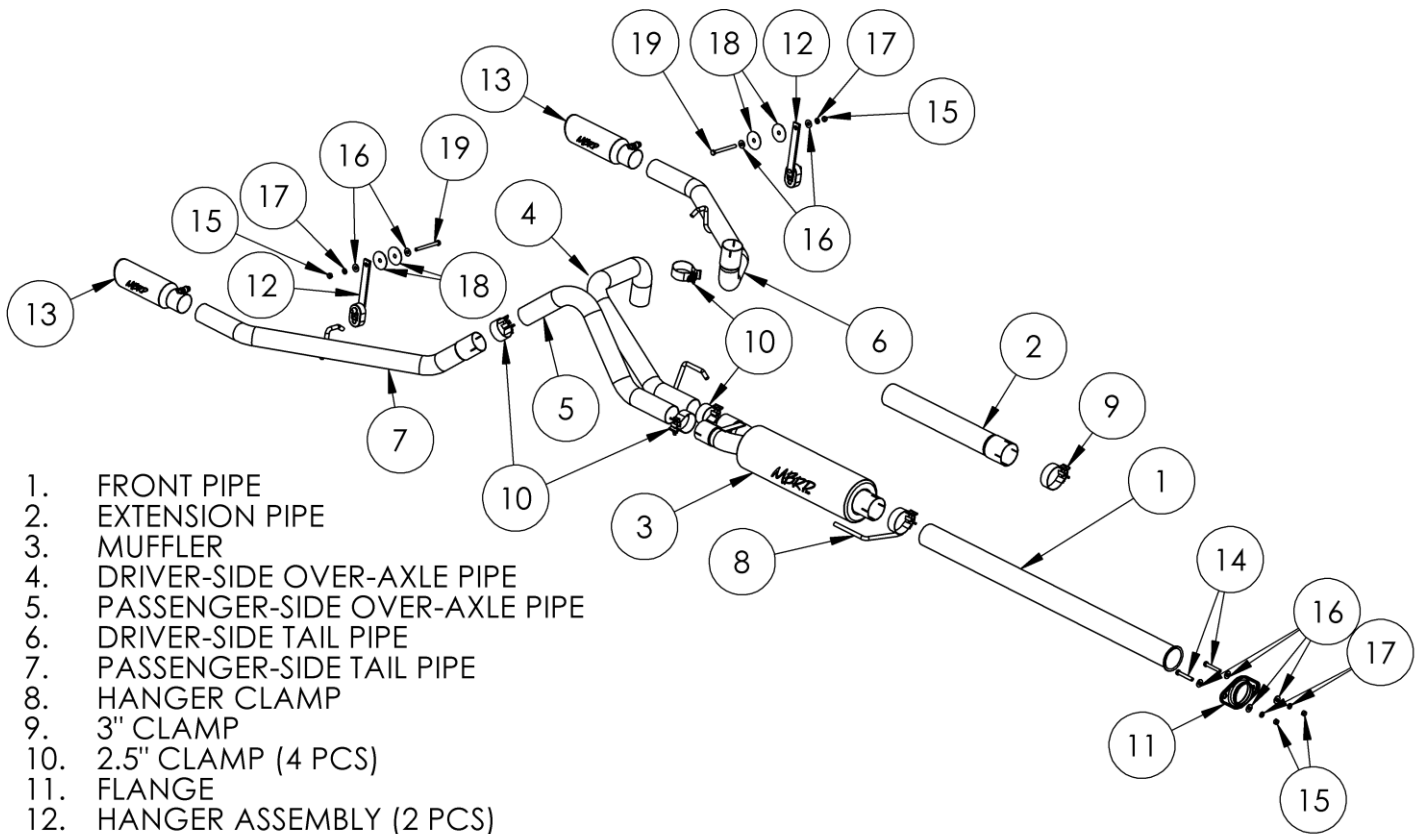


# S5255

2015-UP F150 2.7L/3.5L ECOBOOST  
DUAL SPLIT REAR

**MBRP**  
INC.  
PERFORMANCE EXHAUST



1. FRONT PIPE
2. EXTENSION PIPE
3. MUFFLER
4. DRIVER-SIDE OVER-AXLE PIPE
5. PASSENGER-SIDE OVER-AXLE PIPE
6. DRIVER-SIDE TAIL PIPE
7. PASSENGER-SIDE TAIL PIPE
8. HANGER CLAMP
9. 3" CLAMP
10. 2.5" CLAMP (4 PCS)
11. FLANGE
12. HANGER ASSEMBLY (2 PCS)
13. EXHAUST TIP (2 PCS)
14. 3/8" X 2.5" BOLT (2 PCS)
15. 3/8" NUT (4 PCS)
16. 3/8" WASHER (8 PCS)
17. 3/8" LOCK WASHER (4 PCS)
18. FENDER WASHER (4 PCS)
19. 3/8" X 4" BOLT

NOTE: ALUMINIZED SYSTEMS USE SADDLE CLAMPS

## PLEASE READ BEFORE STARTING INSTALLATION

While MBRP Inc. has made every effort to ensure that all components of this system are of superior quality and properly packaged, it is the installer's responsibility to ensure the following before removal of the factory exhaust:

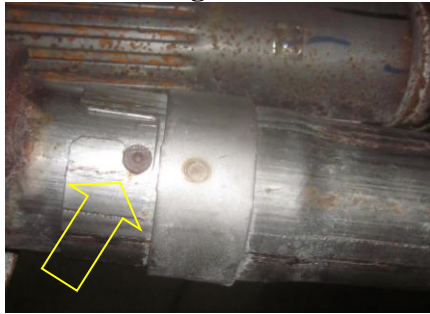
- that ALL components shown above are present.
- that ALL mating components fit together.
- that there are no damaged components.
- that the system you have purchased is appropriate for your vehicle year, model and configuration.
- that the system will not interfere with any modifications previously installed or planned.
- that you have read and understand these instructions.

If you have any questions or are uncertain about any aspect of the installation of this system to your vehicle please contact your dealer before commencing installation.

**Removal of Stock System:**



**Figure 1**



**Figure 2**



**Figure 4**



**Figure 5**

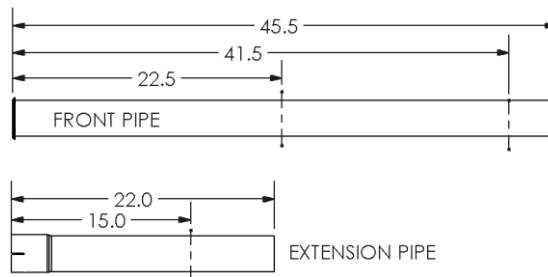


**Figure 6**

1. Apply a penetrating lubricant liberally to all hangers and rubber isolators.
2. Loosen the factory clamp in front of the muffler.
3. Loosen the factory extension pipe flange bolts.  
**Refer to Figure 1.**
4. Rotate the factory extension pipe to release the factory muffler inlet locking boss.  
**Refer to Figure 2.**
5. Remove the factory muffler assembly from the hangers and remove from the vehicle.
6. Remove the factory extension pipe bolts and remove the factory extension pipe from the vehicle.

**Installation of MBRP Inc. Performance Exhaust:**

1. Determine the overall length of the **Front Pipe** and **Extension Pipe** (if required).  
**Refer to figure 3.**



WHEELBASE	FRONT PIPE LENGTH	EXTENSION PIPE LENGTH
122" RC 6.5' BOX	22.5	NONE
141" RC 8' BOX	41.5	NONE
145" EC 6.5' BOX/ SC 5.5' BOX	45.5 (NO CUT)	NONE
157" SC 6.5' BOX	45.5 (NO CUT)	15"
164" EC 8' BOX	45.5 (NO CUT)	22" (NO CUT)

**Figure 3.**

2. Slide the **Flange** onto the **Front Pipe** and loosely install the **Front Pipe** using the supplied **Hardware**.  
**Refer to Figure 4.**
3. Install the **Hanger Clamp** into the second factory isolator  
**Refer to Figure 5.**



**Figure 7**

4. Place the **Front Pipe** or **Extension Pipe** (if required) into the **Hanger Clamp**.  
**Refer to Figure 6.**

5. Install the **Muffler** onto the **Extension Pipe** and lightly secure with the **Hanger Clamp**. **Muffler** outlets will be at a 45° angle viewed from the rear, with the passenger-side outlet at the bottom.  
**Refer to Figure 7.**



**Figure 8**

6. Place a **2.5" Clamp** over each **Muffler** outlet and insert the **Driver-Side Over-Axle Pipe** into the left upper **Muffler** outlet and factory isolator.  
**Refer to Figure 8.**

7. Install the **Passenger-Side Over-Axle Pipe** into the lower right **Muffler** outlet. Snug but do not completely tighten the **2.5" Clamp**.  
**Refer to Figure 9.**



**Figure 9**

8. Install the **Hanger Assemblies** using the supplied **Hardware** through the large holes in the rear of the frame. Tighten the hardware enough to support the pipe but leave the final tightening until the final step. The **Hanger Assembly** attachment allows for some height adjustment to align the **Tail Pipes**.  
**Refer to Figures 10 and 11.** (Driver-side shown)



**Figure 10**



**Figure 11**





**Figure 12**



**Figure 13**



**Figure 14**



**Figure 15**

9. Install the **Passenger-Side Tail Pipe** onto the **Passenger-Side Over-Axle Pipe** and into the **Passenger-Side Hanger Assembly**.  
**Refer to Figure 12.**

10. Install the **Driver-Side Tail Pipe** into the **Driver-Side Hanger Assembly** and onto the **Driver-Side Over-Axle Pipe** using a **2.5"** Clamp.  
**Refer to Figure 13.**

11. Install the **Exhaust Tips** and adjust to your liking.  
**Refer to Figure 14 and 15.**

12. Once everything is aligned, completely tighten ALL **Clamps** and **Hardware**.

13. Check along the whole length of the exhaust system to ensure that there is adequate clearance around the spare tire, fuel and brake lines or any wiring. If any interference is detected relocate or adjust.



**Congratulations!** You are ready to begin experiencing the improved power, sound and driving experience of your **MBRP Inc.** performance exhaust system. We know you will enjoy your purchase.