

**Before returning this product
to the store of purchase**

Contact Dee Zee if you experience the following problems:

- Missing Parts
- Installation Problems/Questions
- Warranty Questions

1.800.779.2102

Hours of operation: 8am - 5pm CST, Mon-Friday

Review complete warranty policy and register your product at:

www.deezee.com



Dee Zee Tie Down Installation Instructions

Congratulations on your purchase of a quality Dee Zee product. Dee Zee is recognized as having the highest quality running boards and accessories on the market today. We have earned this reputation by offering our customers a product they can be proud to place on their vehicles. Dee Zee meets all the criteria of manufacturing a custom-fit product which guarantees it to be the easiest product to install.

Note: Please take time to read all of the instructions before beginning this installation.

Warning! Please check for wiring or other obstructions before drilling any holes into the vehicle. If it is necessary to drill any holes into the vehicle, Dee Zee recommends putting a sealant or rust inhibitor around all holes drilled into the body of the vehicle.

Note: Continuously check the torque on your tie downs to ensure that the assembly has not come loose.

If you should happen to have any questions with this product or you have an installation question, please feel free to call us at:

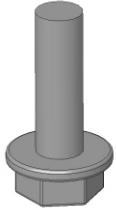
1-800-779-8222

If you would like to find out more information on Dee Zee's products please feel free to visit our website at:

WWW.DEEZEE.COM

Dee Zee Tie Down Installation Instruction

DZ 97903

A

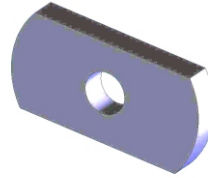
PN 525

X2

B

TD 97903

X2

C

PN 835

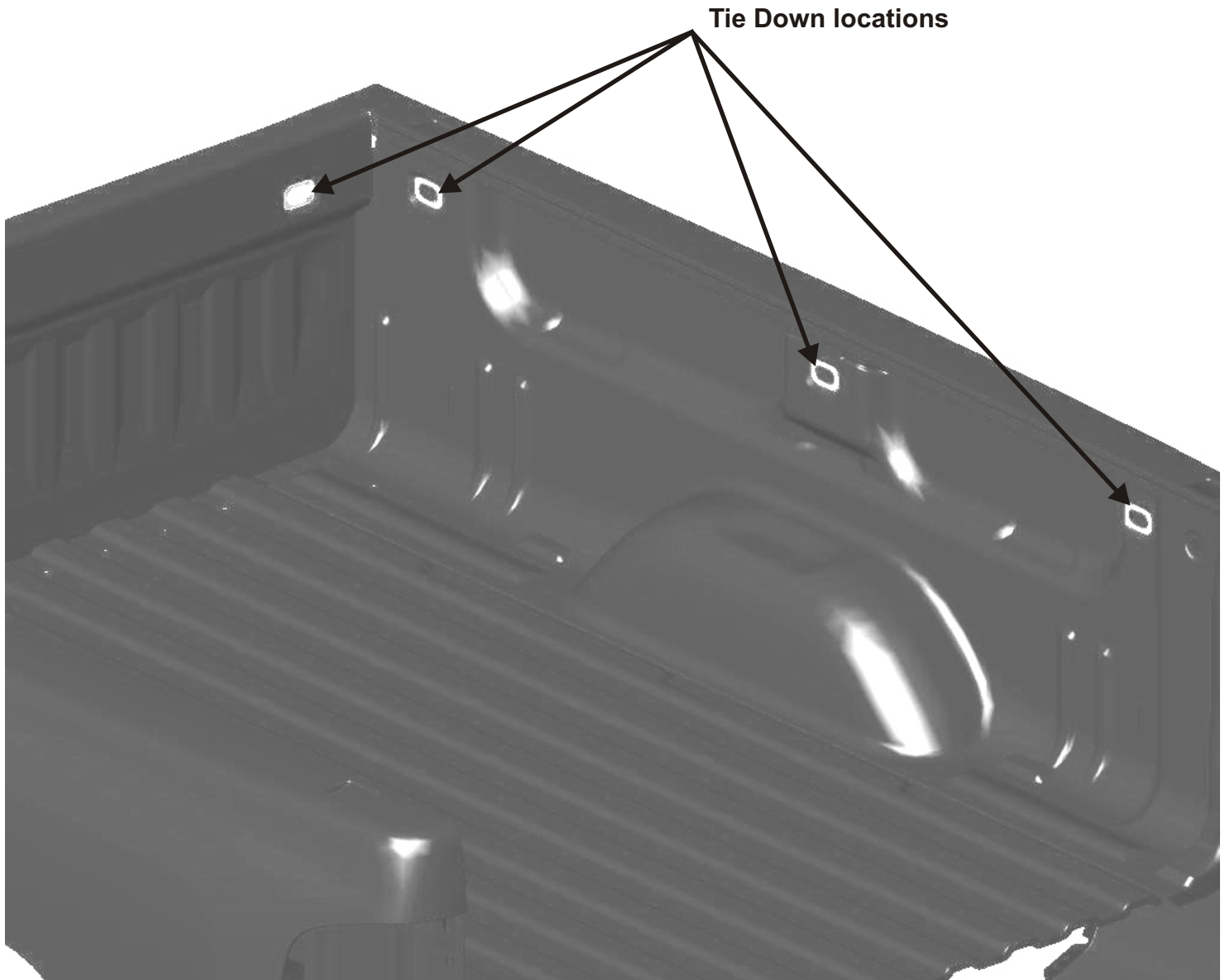
X2

Tools Required:**Outils Nécessaires:****Ratchet / Wrench**
Sizes: 10mm

DZ 97903 Installation Instructions

(Note: will not work with slide rail system installed)

Step 1: Select the indented location(s) in the bed of your truck that you would like to mount the tie down to. Refer to the images below for some available areas. Remove the plastic cover from the hole(s).



Step 2: Attach the 8mm bolt and 8mm threaded plate to the tie down as shown in the image below. With the plate towards the end of the bolt and in the rotated position as shown, insert the tie down assembly into the hole of the vehicle where the cover was removed.



Tighten the bolt down by hand. Ensure that the plate has rotated in between the legs of the tie down to ensure a tight fit (refer to the image below). Once tight to the vehicle, torque the bolt down with a 13mm wrench to 16ft/lbs.

