



# INSTALLATION INSTRUCTIONS

## PRO TRAXX 5 OVAL TUBE STEP BAR

**APPLICATION:**  
AUTOMOTIVE PRODUCTS,

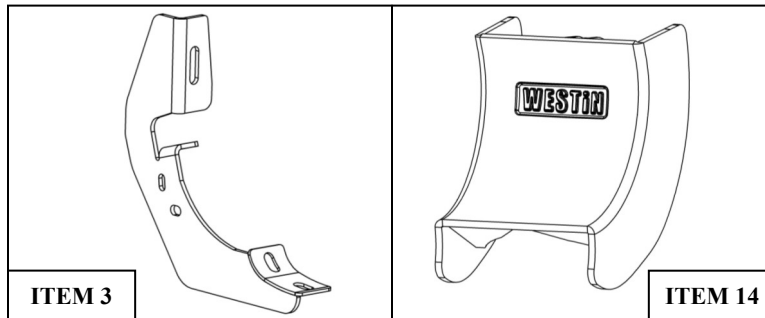
2007-2013 Chevrolet Silverado / GMC Sierra 1500 Extended/Crew Cab  
2007-2010 Chevrolet Silverado / GMC Sierra 2500/3500HD Ext./Crew Cab (Diesel Included)  
2011-2014 Chevrolet Silverado / GMC Sierra 2500/3500HD Ext./Crew Cab (Diesel Excluded)

**PART NUMBER:**

21-51680, 21-51685, 21-51950, 21-51955

ITEM	QUANTITY	DESCRIPTION	TOOLS NEEDED
1,2	2	STEP BAR, DRIVER (1) AND PASSENGER (2)	13MM SOCKET
3	6	MOUNTING BRACKET	12MM SOCKET
4	12	M8 HEX CAP SCREW (YELLOW ZINC)	HEX KEY TOOL (INCLUDED)
5	12	M8 FLAT WASHER (YELLOW ZINC)	
6	12	M8 SPLIT LOCK WASHER (YELLOW ZINC)	RATCHET
7	12	M10 BUTTON HEAD SOCKET CAP SCREW (BLACK ZINC)	TORQUE WRENCH
8	12	M10 FLAT WASHER (BLACK ZINC)	
9	12	M10 INTERNAL TOOTHED LOCK WASHER (BLACK ZINC)	
10	12	M8 EXTRUDED U-NUT (YELLOW ZINC)	
11	12	M6 HEX HEAD CAP SCREW (YELLOW ZINC)	
12	24	M6 FLAT WASHER (YELLOW ZINC)	
13	12	M6 NYLON NUT (YELLOW ZINC)	
14	6	PLASTIC BRACKET COVER	

**ANTI-SEIZE LUBRICANT MUST BE USED ON ALL STAINLESS STEEL FASTENERS TO PREVENT THREAD DAMAGE AND GALLING**



### PROCEDURE

1. Remove contents from box, verify if all parts listed are present and free from damage.  
Carefully read and understand all instructions before attempting installation.  
**Failure to identify damage before installation could lead to a rejection of any claim.**

#### Extended Cab:

2. Starting at the drivers side of the vehicle locate the existing circular hole in the rocker panel towards the front of the vehicle. Remove the rubber plug from the bigger hole to access the smaller diameter hole and insert (1) M8 nut clip over the hole (Item 10). See **Figures 1 and 2**.



Westin Automotive Products, Inc.  
320 W. Covina Blvd  
San Dimas, Ca. 91773

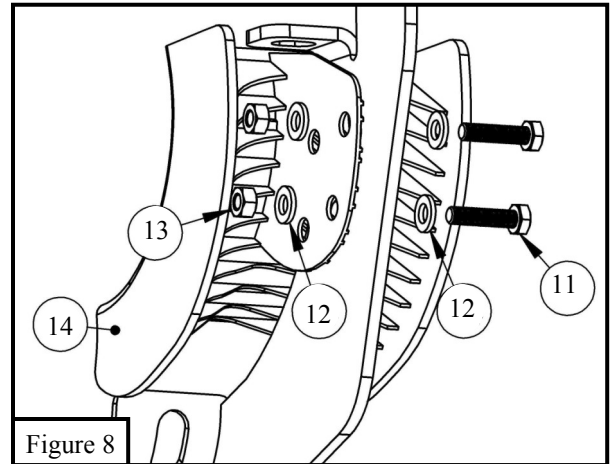
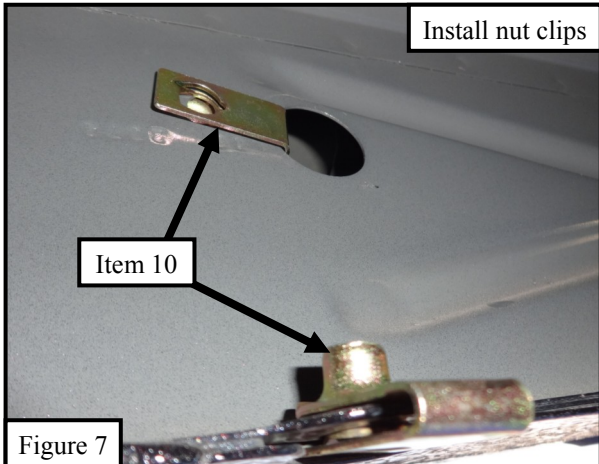
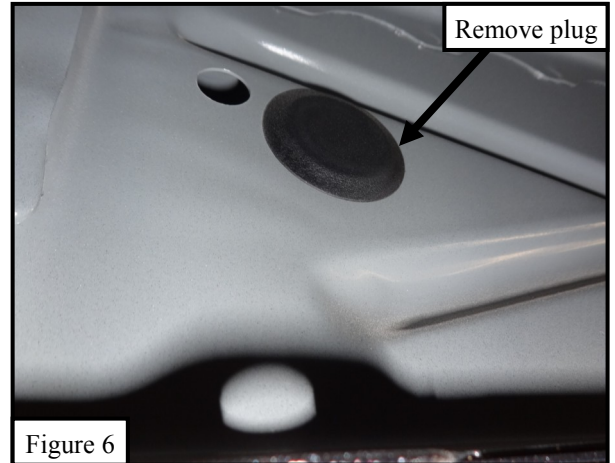
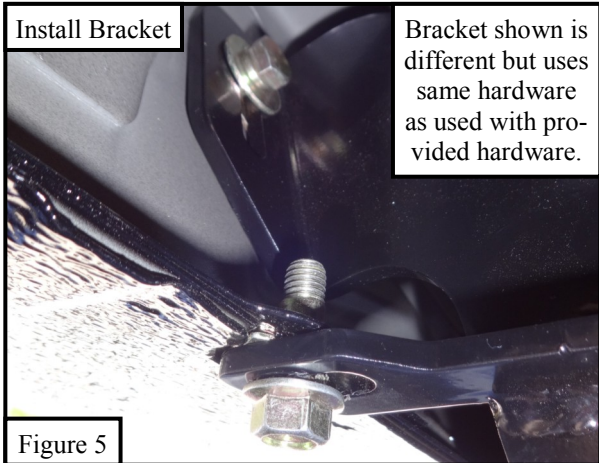
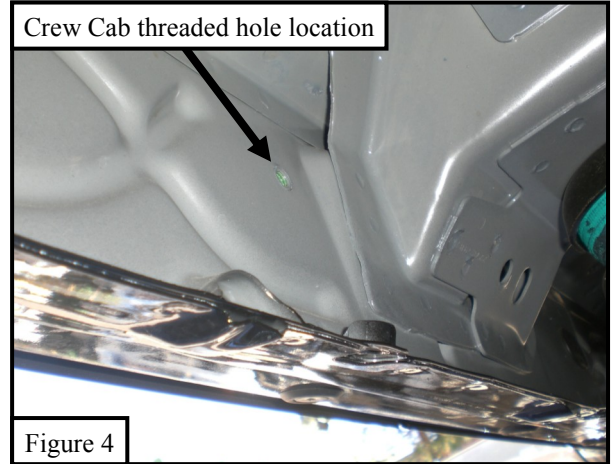
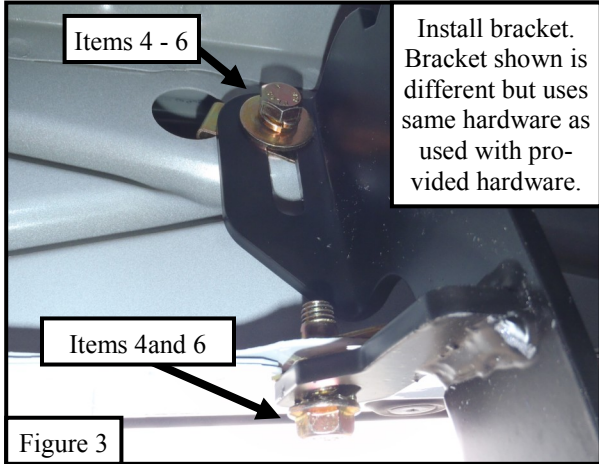
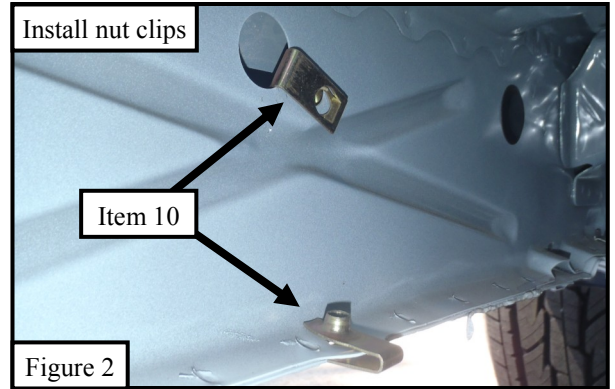
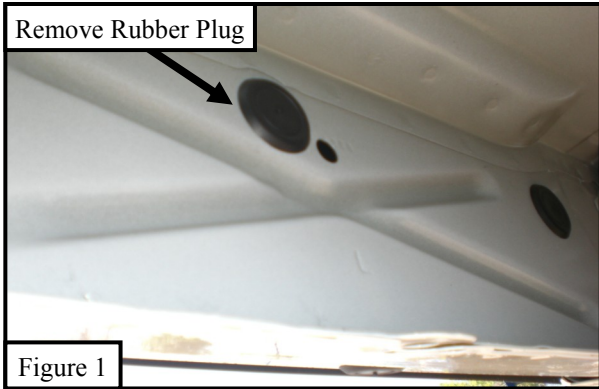
3. Locate the existing hole in the pinch weld and place (1) M8 clip nut onto the hole. See **Figure 3**.
4. Attach (1) mounting bracket (Item 3) to the previously installed nut clip in **Step 2** using (1) M8 hex head cap screw (Item 4), (1) M8 lock washer (Item 6), and (1) M8 flat washer (Item 5). Attach the mounting bracket to the pinch weld nut clip using (1) M8 hex cap screw (Item 4), and (1) M8 lock washer (Item 6) (**Figure 3**). Do not fully tighten at this time.
5. Repeat **Steps 2 - 4** for the center and rear mounting brackets.
6. Locate (1) plastic bracket cover (Item 16) and loosely secure it to the (6) brackets using the provided hardware: (2) M6 hex head cap screws, (4) M6 flat washers, and (2) M6 nylon nuts. Repeat for every bracket. See **Figure 8**.
7. Take the drivers side step bar (Item 1) and place it on the mounting cradles then attach the step bar using (6) M10 button head cap screws (Item 7), (6) M10 toothed lock washers (Item 9), and (6) M10 flat washers (Item 8) (**Figure 9**).  
**Note:** The drivers side step tube will be packaged in a clear poly tube and the passenger side will be packaged in a red poly tube, the Westin logo should face outward when installed.
8. Align and adjust as needed then tighten all hardware at this time. Torque all M8 hardware to 15-20 ft-lbs, and M10 to 30-35 ft-lbs (**Figure 10**).
9. Follow the same steps to install the passenger side mounting brackets and step bar.

#### **Crew Cab:**

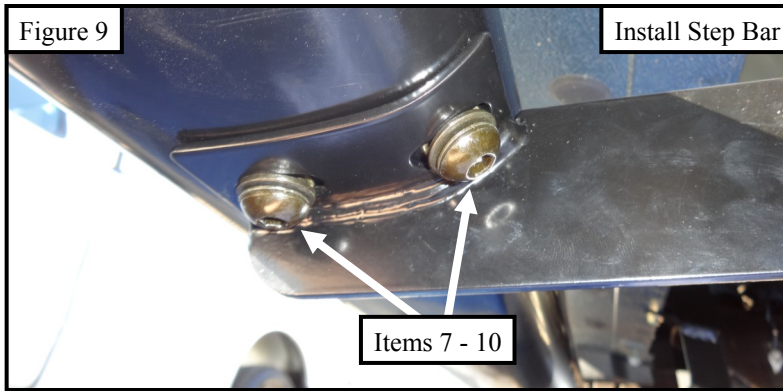
2. Starting from the drivers side of the vehicle locate the threaded hole located in the rocker panel towards the front of the vehicle. (**Figure 4**) Take (1) mounting bracket (Item 3) and attach it to the threaded hole using (1) M8 hex head cap screw (Item 4), (1) M8 lock washer (Item 6), and (1) M8 flat washer (Item 5). Locate the existing welded nut on the pinch weld and attach the mounting bracket to the pinch weld using (1) M8 hex cap screw (Item 4), and (1) M8 lock washer (Item 6), (**Figure 5**). Do not fully tighten at this time.
3. Repeat **Step 2** for the center mounting bracket.
4. Locate the existing circular hole in the rocker panel towards the rear of the vehicle. Remove the rubber plug from the bigger hole to access the smaller diameter hole and insert (1) M8 nut clip over the hole (Item 10). (**Figures 6 and 7**)
5. Locate the existing hole in the pinch weld and place (1) M8 clip nut onto the hole. (**Figure 7**)
6. Attach (1) mounting bracket to the previously installed nut clip in **Step 4** using (1) M8 hex head cap screw (Item 4), (1) M8 lock washer (Item 6), and (1) M8 flat washer (Item 5). Attach the mounting bracket to the pinch weld using (1) M8 hex cap screw (Item 4), and (1) M8 lock washer (Item 6) (**Figure 3**). Do not fully tighten at this time.
7. Locate (1) plastic bracket cover (Item 16) and loosely secure it to the (6) brackets using the provided hardware: (2) M6 hex head cap screws, (4) M6 flat washers, and (2) M6 nylon nuts. Repeat for every bracket. See **Figure 8**.
8. Take the drivers side step bar (Item 1) and place it on the mounting cradles then attach the step bar using (6) M10 button head cap screws (Item 7), (6) M10 toothed lock washers (Item 9), and (6) M10 flat washers (Item 8) (**Figure 9**).  
**Note:** The drivers side step tube will be packaged in a clear poly tube and the passenger side will be packaged in a red poly tube, the Westin logo should face outward when installed.
9. Align and adjust as needed then tighten all hardware at this time. Torque all M8 hardware to 15-20 ft-lbs, and M10 to 30-35 ft-lbs (**Figure 11**).
10. Follow the same steps to install the passenger side mounting brackets and step bar.



Westin Automotive Products, Inc.  
320 W. Covina Blvd  
San Dimas, Ca. 91773



Westin Automotive Products, Inc.  
 320 W. Covina Blvd  
 San Dimas, Ca. 91773



**Care Instructions**

- REGULAR WAXING IS RECOMMENDED. DO NOT USE ANY TYPE OF POLISH OR WAX THAT MAY CONTAIN ABRASIVES.
- STAINLESS STEEL PRODUCTS CAN BE CLEANED WITH MILD SOAP AND WATER. STAINLESS STEEL POLISH SHOULD BE USED TO POLISH SMALL SCRATCHES.
- GLOSS BLACK FINISHES SHOULD BE CLEANED WITH MILD SOAP AND WATER.



Westin Automotive Products, Inc.  
 320 W. Covina Blvd  
 San Dimas, Ca. 91773

Thank you for choosing Westin products  
 for additional installation assistance please call  
 Customer Service (800) 793-7846

[www.westinautomotive.com](http://www.westinautomotive.com)

# Westin

SIGNATURE OF QUALITY

AUTOMOTIVE PRODUCTS, INC.



## WARNING



Failure to follow these instructions could lead to death, personal injury, and / or property damage.

### FASTENERS:

All Westin supplied fasteners must be utilized and installed in accordance with the installation instructions and apply torque to the specifications as defined. **DOUBLE CHECK ALL FASTENERS BEFORE INITIAL USE, AND PERIODICALLY IN THE FUTURE TO ENSURE PROPER FUNCTION AND SAFETY.**

### DRILLING:

Most Westin products do not require drilling for installation. If drilling is defined as required, use caution when drilling a vehicle. **FAILURE TO REVIEW AN AREA TO BE DRILLED MAY RESULT IN PERSONAL INJURY AND/OR INJURY TO OTHERS AS WELL AS VEHICLE DAMAGE.**

### EYE PROTECTION:

**ALWAYS WEAR SAFETY GLASSES OR GOGGLES DURING THE INSTALLATION PROCESS TO AVOID PERSONAL INJURY.**

### MAXIMUM TOWING/CARRYING CAPACITY:

The Westin Receiver Hitches will have a visible tow rating label affixed directly on the product. User should never exceed the vehicle manufacturers maximum tow and weight rating regardless of the capacity of the hitch. **FAILURE TO FOLLOW THESE GUIDELINES WILL VOID THE WESTIN WARRANTY AND MAY RESULT IN PERSONAL INJURY AND/OR INJURY TO OTHERS AS WELL AS VEHICLE DAMAGE.**

**Westin**  
SIGNATURE OF QUALITY

Westin Automotive Products, Inc.  
320 W. Covina Blvd  
San Dimas, Ca. 91773