

# INSTALLATION INSTRUCTIONS

**⚠ WARNING: DO NOT EXCEED PRODUCT RATING OR TOW VEHICLE LAMP LOAD RATING, WHICHEVER IS LOWER**

## APPLICATIONS

Make	Model
Honda	Pilot
Honda	Ridgeline

## WIRING LOCATION GUIDE

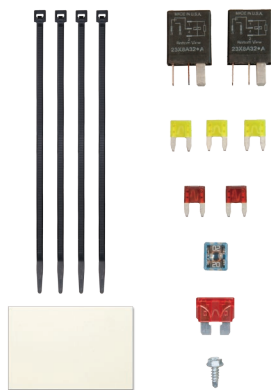
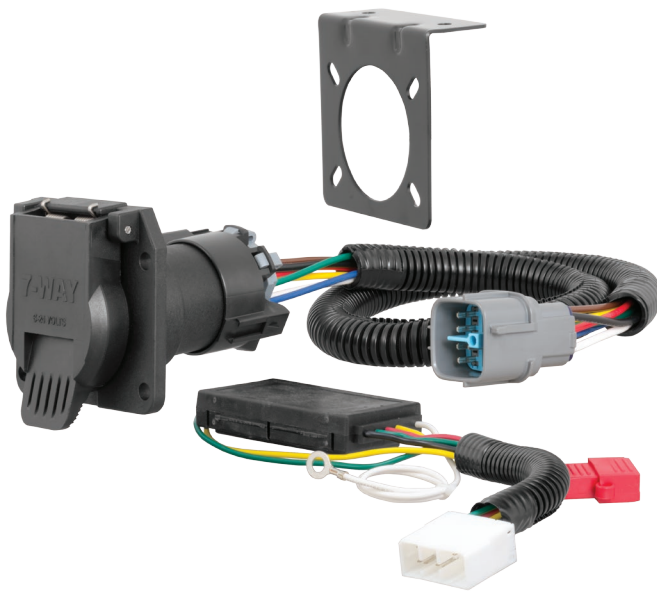
### SUVs, MINI & FULL-SIZED VANS (S)

Representative vehicle shown below

S5 - Behind driver side rear bumper



## CUSTOM WIRING CONNECTOR



## NOTICE

All steps must be followed to ensure the wiring connector will function properly. Once installed, test for proper function by using a test light or connecting a properly wired trailer.

## TOOLS NEEDED

Flat blade screwdriver

Side cutter

## ⚠ WARNING

The battery connection must be fuse protected, 10 amp max. Exceeding the product rating can cause loss of warranty, overheating and potential fire. Do not exceed product rating or tow vehicle lamp load rating, whichever is lower.

Signal Circuits - 3.0 amps per side

Tail / Running Circuits - 6.0 amps total

Check vehicle owner's manual or contact the vehicle manufacturer for more information.

# INSTALLATION / SAFETY INSTRUCTIONS

## Honda Pilot Installation

### Step 1


Open the vehicle trunk and fold the rear seats down. On the driver side, open the rear storage compartment and remove the access panel (A).

### Step 2

Behind the access panel locate the vehicle taillight wiring connector (B). The vehicle connector will be similar to the one on the custom connector. Insert the custom wiring connector into the vehicle connector. Make sure the connectors are fully inserted with locking tabs in place.

### Step 3

Locate a suitable grounding point near the connector such as an existing screw with nut in the vehicle frame or drill a 3/32" pilot hole for the provided screw. The area should be free of rust, dirt and paint. Secure the white ground wire using the ring terminal and provided screw.

 **WARNING:** Check for miscellaneous items that may be hidden behind or under any surface before drilling to avoid damage and / or personal injury.

### Step 4

Locate a flat spot on the vehicle frame. Adhere the black converter box using the provided double-sided tape (C). Insert the provided 10 amp fuse into red in-line fuse holder.

### Step 5

On the driver side, remove the cover labeled 'AUX FUSE' (D). Remove the black cover from the fuse panel (E). Insert the 7.5 amp fuse into 'position 1 & 2'. Insert the 20 amp fuse into 'position 4' and insert the relay into 'position 5 & 6' as shown (F).

### Step 6

On the driver side, behind the rear bumper, locate the vehicle taillight wiring harness connector. The connector will be similar to the one on the custom wiring connector. Remove the connector from the cross-member using a pry tool. Remove the dark blue fastener from housing by sliding it rearward. Remove the protective cover taking care not to damage the locking tabs (G). Insert the custom wiring connector into the vehicle connector. Make sure the connectors are fully inserted with locking tabs in place.

### Step 7

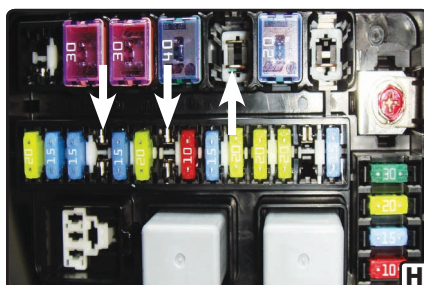
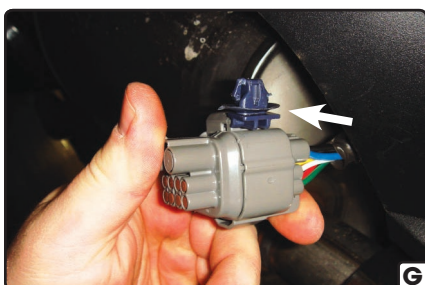
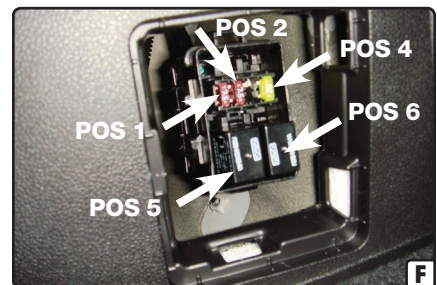
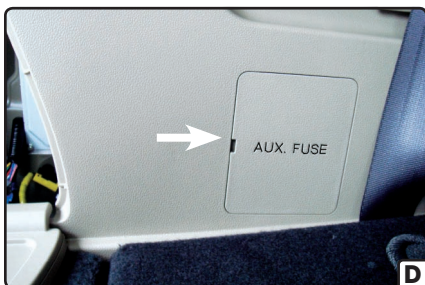
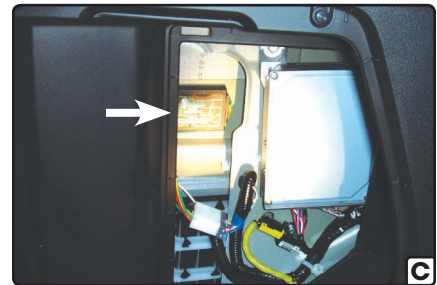
Mount the 7-way connector and bracket using the mounting bracket install sheet. Route the 7-way to the center of the vehicle and insert the custom wiring connector into the 7-way connector. Make sure the connectors are fully inserted with locking tabs in place. Secure any loose wires with the provided cable ties.

### Step 8

On the driver side, under the hood, remove the fuse box cover (H). Insert the 20 amp SLO-BLO fuse into position as shown (I).

### Step 9

Reinstall all items removed during install.  
Discard the fuses that were not used in the installation.





# INSTALLATION / SAFETY INSTRUCTIONS

## Honda Ridgeline Installation

### Step 1

On the drivers side, open rear passenger door and fold the bottom rear seat up into the upright portion (J).

### Step 2


Remove the seat trim panel to locate the vehicle taillight wiring connector (K,L). The vehicle connector will be to the left of the green relays and will be similar to the one on the custom connector (M).

### Step 3

Detach the two zip tie push fasteners holding the vehicle wiring connector in place. Insert the custom wiring connector into the vehicle connector. Make sure the connectors are fully inserted with locking tabs in place.

### Step 4

Locate a suitable grounding point near the connector such as an existing screw with nut in the vehicle frame (M) or drill a 3/32" pilot hole for the provided screw. The area should be free of rust, dirt and paint. Secure the white ground wire using the ring terminal and provided screw.

 **WARNING:** Check for miscellaneous items that may be hidden behind or under any surface before drilling to avoid damage and / or personal injury.

### Step 5

Locate a flat spot inside the vehicle, near the connector. Adhere the black converter box using the provided double-sided tape (N). Insert the provided 10 amp fuse into red in-line fuse holder.

### Step 6

Reinstall all items removed during install and set the seat back to it's normal position.

### Step 7

On the driver side, behind the rear bumper, locate the vehicle taillight wiring harness connector. The connector will be similar to the one on the custom wiring connector. Remove the connector from the cross-member using a pry tool. Remove the dark blue fastener from housing by sliding it rearward. Remove the protective cover taking care not to damage the locking tabs (O). Insert the custom wiring connector into the vehicle connector. Make sure the connectors are fully inserted with locking tabs in place.

### Step 8

Mount the 7-way connector and bracket using the mounting bracket install sheet. Route the 7-way to the center of the vehicle and insert the custom wiring connector into the 7-way connector. Make sure the connectors are fully inserted with locking tabs in place. Secure any loose wires with the provided cable ties.

### Step 9

Install the provided 4-flat dust cover to help prevent corrosion. On the driver side, under the hood, remove the fuse box cover (P). Insert the 7.5 amp fuse into position 7 '+B TRL BACKUP' and insert the 10 amp fuse into position 3 'TRL E-BRAKE' (Q). Discard the fuses that were not used in the installation.

