



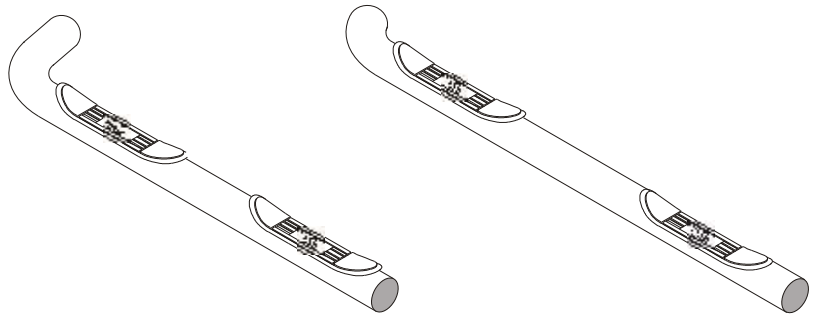
INSTALLATION INSTRUCTIONS

APPLICATION: 2002-UP CHEVROLET TRAILBLAZER
 2002-UP GMC ENVOY
 2002-UP OLDSMOBILE BRAVADA
 2002-UP CHEVROLET TRAILBLAZER EXT
 2002-UP GMC ENVOY XL

AUTOMOTIVE PRODUCTS, INC.

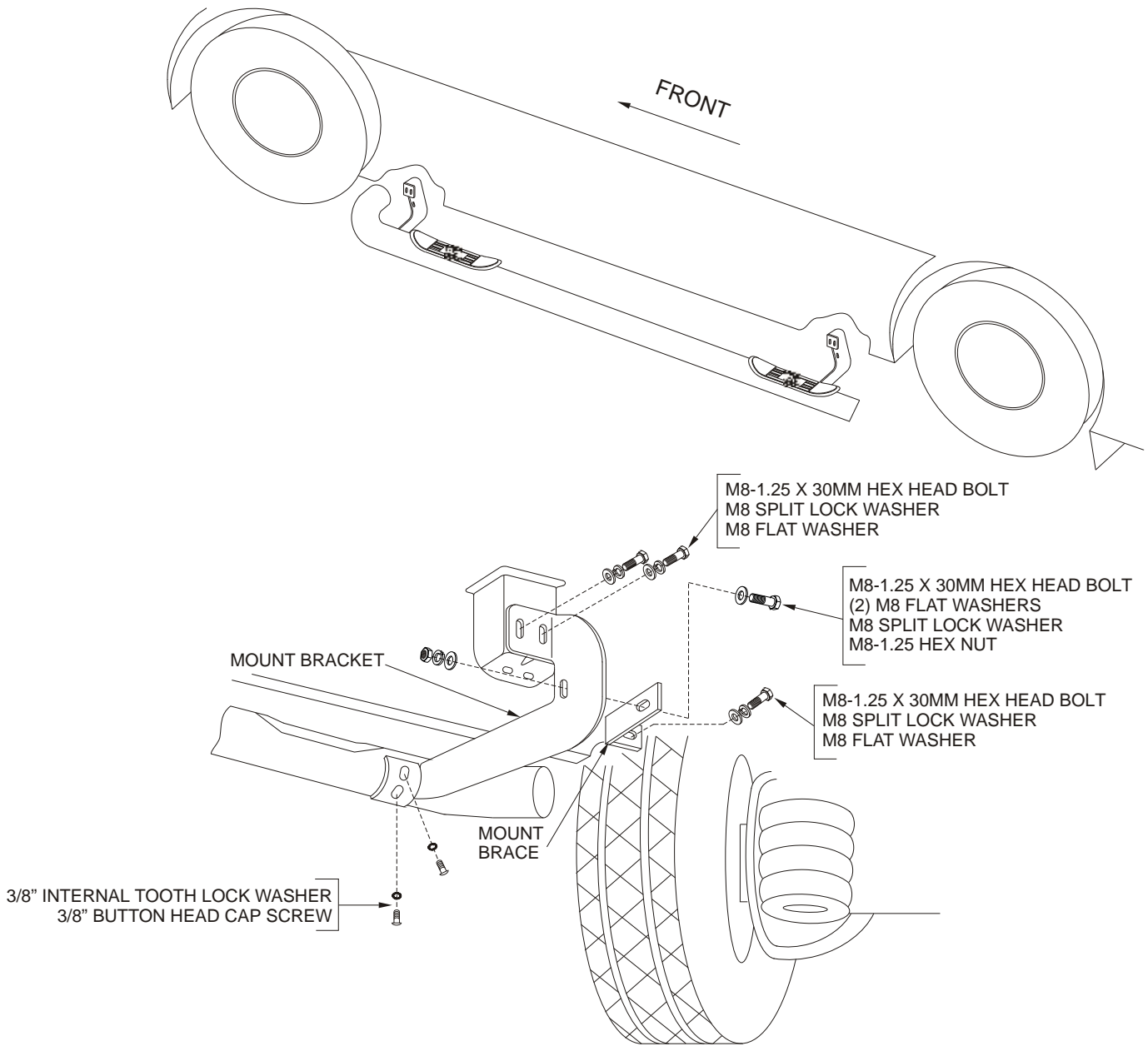
STEP BAR ASSEMBLIES

- 25-2130
- 25-2135
- 26-2130
- 26-2135
- 25-2240
- 25-2245
- 26-2240
- 26-2245



QTY	PARTS KIT CONTENTS DESCRIPTION	TOOLS REQUIRED
1	STEP BAR, DRIVER SIDE	13MM SOCKET
1	STEP BAR, PASSENGER SIDE	13MM WRENCH
4	MOUNT BRACKET	7/32" HEX WRENCH (ALLEN)
4	MOUNT BRACE	RATCHET
4	M8-1.25 HEX NUT	TORQUE WRENCH
16	M8 SPLIT LOCK WASHER	NOTE: FASTENERS ARE CONTAINED IN BOLT KIT 60-1214.
20	M8 FLAT WASHER	
16	M8-1.25 X 30MM HEX HEAD BOLT	
8	3/8-16 X 1.00" BUTTON HEAD CAP SCREW	
8	3/8" INTERNAL TOOTH LOCK WASHER	

- STEP 1. Remove the contents from the box and check for any damage. Verify all parts against the parts list.
- STEP 2. Read and understand instructions completely before beginning installation.
- STEP 3. Install mount brackets to vehicle body using (2) M8-1.25 x 30MM hex head bolts, (2) M8 split lock washers and (2) M8 flat washers. Leave loose.
- STEP 4. Fasten mount brace to vehicle body using (1)M8-1.25 x 30MM hex head bolt, (1) M8 split lock washer and (1) M8 flat washer. Attach other end of mount brace to mount bracket using (1) M8-1.25 x 30MM hex head bolt, (2) M8 flat washers, (1) M8 split lock washer and (1) M8-1.25 hex nut. Leave loose.
- STEP 5. Position step bar in place and fasten to mount brackets using (4) 3/8-16 x 1.00" button head cap screws and (4) 3/8" internal tooth lock washers. Leave loose.
- STEP 6. Level and adjust step bar as desired. Torque 8MM hardware to 25 FT. LBS. and 3/8" hardware to 30 FT. LBS.



DRIVER SIDE, FRONT INSTALLATION SHOWN

Finish protection - Westin products have a high quality finish that must be cared for like any other exposed finish on the vehicle. Protect the finish with a non-abrasive automotive wax (pure carnauba, for example) on a regular basis. The use of cleaner wax or any compound which contains an abrasive is detrimental, as the compounds scratch the finish and open it to corrosion.



Westin Automotive Products, Inc.
5200 N. Irwindale Ave. Suite 220
Irwindale, Ca. 91706

Thank You for choosing Westin products
For additional installation assistance please call
Customer service (800) 793-7846 or (507) 375-3559