



BULLY DOG

INSTALLATION MANUAL



Applications	RFI Part Number
Ford 3.5L EcoBoost F150 2012-2014	51205

Not legal for sale or use in California on pollution-controlled vehicles.



POWER



ECONOMY

Introduction

This manual provides step-by-step installation instructions for the Bully Dog Rapid Flow Induction (RFI) Cold Air Intake for the 2012-2014 Ford 3.5L EcoBoost F150. Installation requires a few basic tools and takes about 20 minutes.

Table of Contents

<i>Parts</i>	1-3
<i>Installation</i>	4-8
<i>Maintenance</i>	9-10

Parts Included

<i>RFI Lid</i>	(51200-1)
<i>Air intake Tube</i>	(51205-3)
<i>Silicone Coupler – Hump, 80 mm</i>	(51202-6)
<i>Silicone Coupler – Hump, 100 mm</i>	(51202-5)
<i>4" Worm Drive Band Clamp (2)</i>	(51105-7)
<i>4.5" Worm Drive Band Clamp (2)</i>	(53252-7)
<i>Air Filter with Band Clamp</i>	(224900)
<i>Black Oxide Phillips Screw – 5/8" Pan Head</i>	(51205-94)
<i>Black Oxide Flat Washer</i>	(51205-95)

Tools Needed

- Flat-head screwdriver
- Phillips screwdriver
- 4 mm socket

Parts Description

RFI Lid

The easy-to-remove lid replaces the stock lid and allows for hassle-free filter maintenance. When the lid is installed, the OEM latches secure the lid to the box.



Air Intake Tube

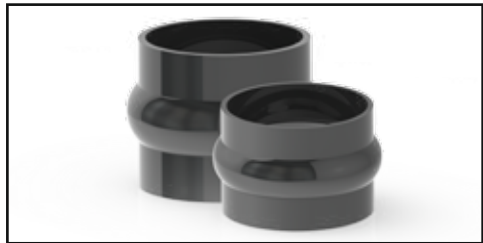
The air intake tube comes with a precisely manufactured mount for the stock temperature sensor. The mount has inset screw mounts that are designed to work with the black oxide

screws provided by Bully Dog. The tube is also designed with a snap-fit feature that will secure it tightly to the RFI lid.



Silicone Coupler Tubes

These high quality 3-ply coupler tubes are heat resistant, flexible and strong.



Worm Drive Band Clamps

Adjustable clamps connect and hold all tubing in place.



Air Filter with Band Clamp

The Rapid Flow Induction Cold Air Intake system includes an ISO 5011 certified eight-layer oil filter. The air filter is secured onto the end of the air intake tube using the included filter clamp and a flat-head screwdriver.



Black Oxide Phillips Screw

Bully Dog provides screws to secure the stock temperature sensor to the RFI air intake tube.

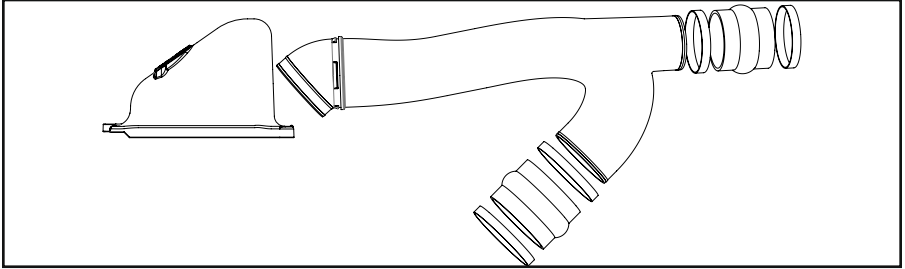


Black Oxide Washer

The black oxide washer protects the temperature sensor and prevents it from being bent when it is attached to the sensor mount on the RFI air intake tube.

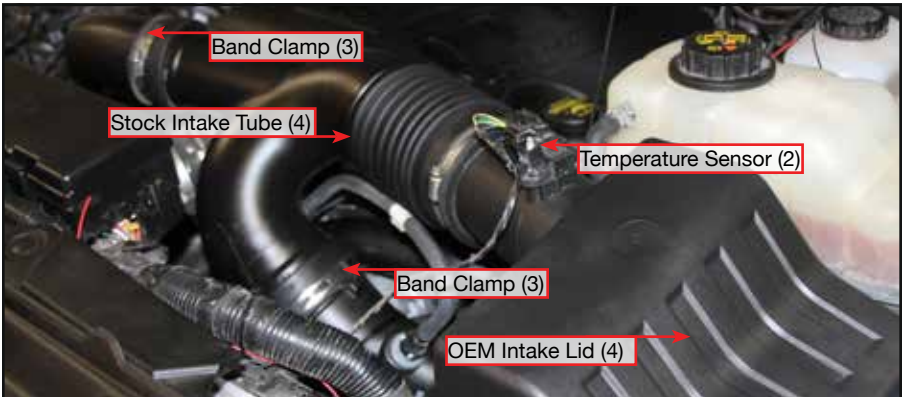


Installation

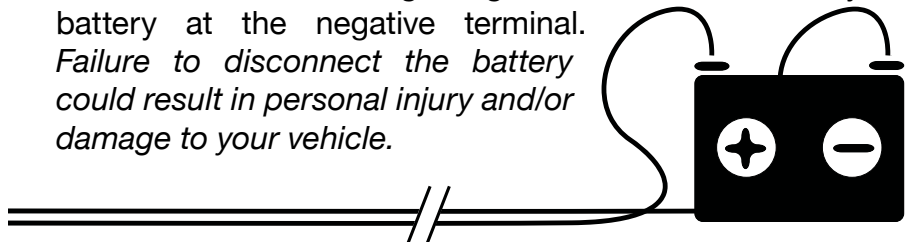


Installation is very simple, and can be separated into three parts: Removing the Stock Intake, Preparing the Bully Dog RFI Intake and Installing the Bully Dog RFI Intake. The complete installation of the RFI Cold Air Intake System should take about 20 minutes. The assembly diagram above shows how the parts of the intake fit together in sequence.

Removing the Stock Intake



1. **IMPORTANT:** Before beginning installation, disconnect your battery at the negative terminal. *Failure to disconnect the battery could result in personal injury and/or damage to your vehicle.*



2. Unplug the temperature sensor and disconnect the sensor clip from the stock intake tube.



3. Use a flat-head screwdriver to loosen both the band clamps that connect the stock intake tube to the turbo intakes. Leave the center band clamp connected.



4. Open the latches on the stock intake lid. Remove the stock intake lid and tube (this should come out as one assembled piece).



5. Remove the stock air filter.



Preparing the RFI Intake

1. Snap the Bully Dog air intake tube into the Bully Dog RFI lid.



2. Connect the air filter to the end of the Bully Dog air intake tube inside the intake box. Tighten the band clamp to secure.



3. Use the 4 mm socket to remove the temperature sensor from the stock air intake tube.



4. Attach the temperature sensor to the RFI intake tube. Use the washer and Phillips screw provided by Bully Dog.



5. Connect the silicone couplers to the RFI intake tube. Do not tighten the band clamps. Leave them loose so you can adjust the couplers into the correct position when you are installing the RFI assembly in the engine bay.



Installing the RFI Intake

1. Align the tabs on the RFI lid with the slots on the stock air filter box and slide them into place.



2. Secure RFI lid to the stock box by closing the latches on the box.



3. Connect the silicon couplers to the turbo intake tubes. Do not tighten the band clamps until both everything is in the correct position.



4. Use a flat-head screwdriver to tighten the band clamps.



5. Reconnect the temperature sensor plug and the vehicle battery. Start the vehicle to listen for leaks and check all connections. Go for a ride and enjoy!



Filter Maintenance

The intake system should be cleaned with the Bully Dog RFI Cleaning Kit at least once every three months; in dusty climates, the filter should be cleaned more often. Cleaning the intake is a two part process: cleaning and oiling the filter.

(1) Cleaning the Filter

1. Remove the filter from the RFI enclosure. Clean the enclosure if necessary.
2. Remove surface dirt (this step can be avoided if a Bully Dog RFI Prefilter has been installed).
 - Lightly tap the filter.
 - Use a soft-bristle brush to remove any loose particles.
3. Spray the cleaner generously over the filter and let it soak for 10 minutes.
4. Thoroughly rinse the filter.
 - Use regular tap water.
 - Avoid high-pressure hoses.
 - Prevent dirt from entering the filter by rinsing from inside out or from the clean side to the dirty side.
5. Let the filter air dry.
 - Do not use any method to speed up the drying process.
 - Using a blow dryer or compressed air can disfigure the filter and allow particles to pass through.



(2) Oiling the Filter

1. Apply a small amount of oil to the soft-bristle brush and gently spread the oil over the filter. Be sure to apply only a small amount of force so the filter is not damaged.

2. Continue applying the oil to the filter until the entire filter is covered in an even amount of oil. Apply enough oil to make the filter a solid and uniform blue, but do not go beyond that.
3. Allow the oiled filter to sit 20 minutes. Re-oil any dry spots that appear. Do not oil the filter excessively. Excessive oiling can cause damage to intake sensors.

Prefilter

The Bully Dog RFI Prefilter is a semi-water-repellent barrier that will keep bugs and debris out while lengthening the time between filter cleanings and reducing the amount of time you spend cleaning the filter.



Checkout more of our **ADRENALIN PUMPING** products!

Triple Dog GT



Pre Filter



Cleaning Kits



Clothing



GT Diesel is not legal for sale or use in California on pollution-controlled vehicles.



Free Technical Support at: 1-940-783-9915

See More at: bullydog.com