



TEL: 1-866-XANATOS

INSTALLATION INSTRUCTIONS

PART # 17A11043MA

2013-2018 NISSAN PATHFINDER GRILLE GUARD

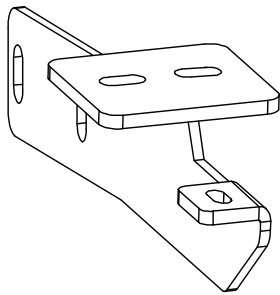
MODULAR

**INSTALLATION INSTRUCTIONS
2013-2018 NISSAN PATHFINDER GRILLE GUARD**

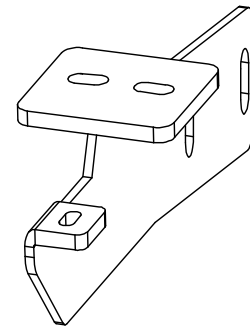
PART NO # 17A11043MA

PARTS LIST:

No.	Part Description	QTY	No.	Part Description	QTY
1	Grille Guard	1	10	M8x30mm "T" Bolt	2
2	Mount bracket	2	11	M8 Flat washer	2
3	Reinforcing rib	2	12	M8 Lock washer	2
4	M12 Nut	2	13	M8 Nut	2
5	M12*110mm Hex Head Bolt	4	14	85*150mm "U" Bolt	2
6	12*35mm Hex Head Bolt	6	15	M10 Flat washer	4
7	M12 Flat washer	10	16	M10 Lock washer	4
8	M12 Lock washer	10	17	M10 Nut	4
9	M12 Nut	6	18		

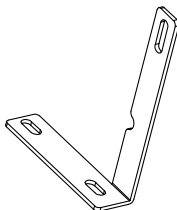


Left

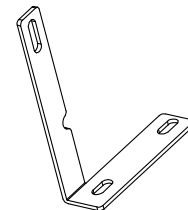


Right

Mount bracket



Left



Right

Mount bracket

INSTALLATION STEPS :

STEP 1: Check the parts in the box carefully if match above list .

STEP 2: Pls prepare the tools for installation, follow as: 8-10 wrench or 17-19 wrench

STEP 3: Put the mount bracket into the girder of the car, and tighten it with the 6、7、9、10、11 。

STEP 4: Put the mount bracket into the girder of the car, and tighten it with the 4、8、9、10、11。

STEP 5: Put the mount bracket into the mount bracket of the car, and tighten it with the 16、17、18、19。

STEP 6: Install grille guard on the mount bracket, and tighten it with the 8、9、10、11。

STEP 7: Installation is finished。

