



Equipped with AEM® Dryflow™ Filter

No Oil Required!

INSTALLATION INSTRUCTIONS

PART NUMBER: 41-1003

2011 NISSAN

ALTIMA

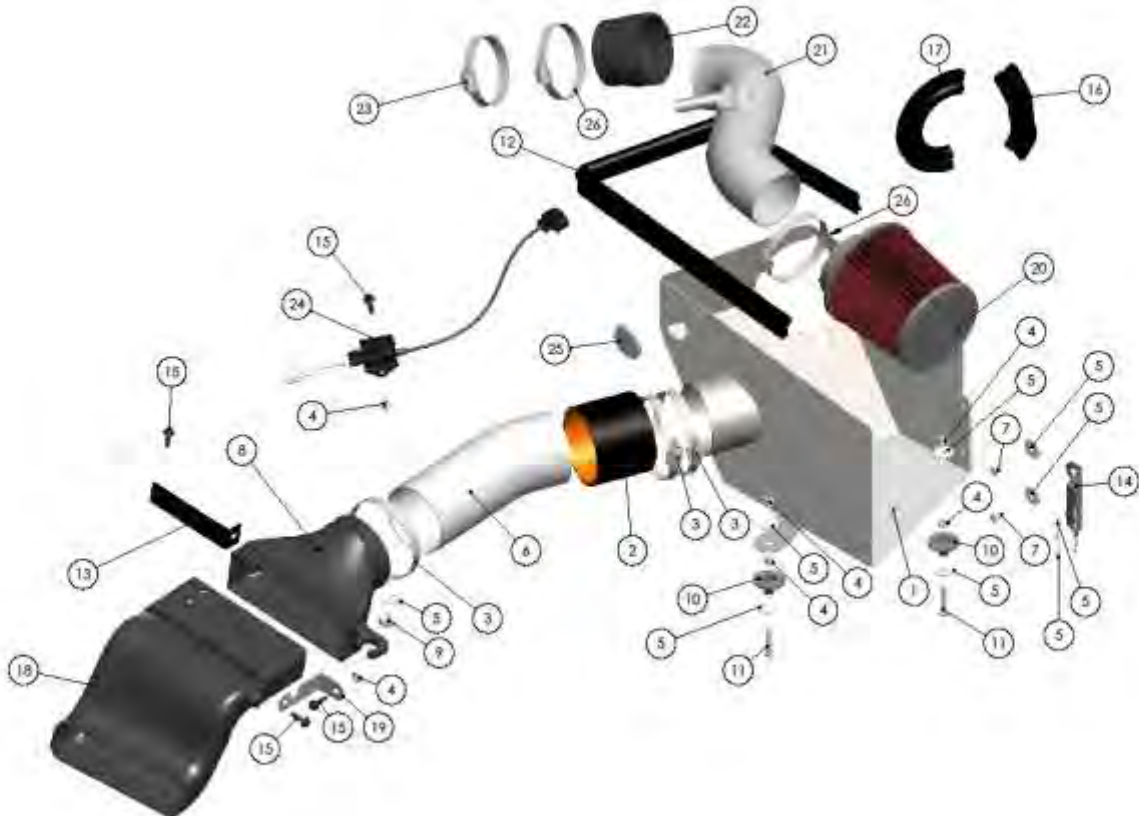
2.5L

SEE*NOTE

***NOTE: Legal in California only for racing vehicles which may never be used upon a highway**

PARTS LIST

Item NO.	PART NUMBER	DESCRIPTION	QTY
1	20 499	HEAT SHIELD; ALTIMA 07 08 V6	1
2	5 350	HOSE; SILICONE 3.50 X 3" BLK	1
3	9456	1/2" BNDHOSE CLAMP,3.15" 4.00"	3
4	444.460.04	NUT; M6 HEX SERRATED	6
5	08160	WASHER; 1"D X 1/4 HOLE FENDER	9
6	2 4992	TUBE; LOWER, ALTIMA 07 08 V6	1
7	1 2065	BOLT; HEX M6 1 X 12MM	2
8	5 357	HOSE , AIR INLET 07+ ALTIMA BLK	1
9	2 620	MOUNTING BLOCK; UPPER SCOOP, 2011 NISSAN MAXIMA	1
10	2 670	SPACER; STAND, ALUMINUM	2
11	1 2002	BOLT; HEX M6 1 X 35MM	2
12	8 4030	EDGE TRIM, 30"	1
13	32 3086	BRACKET; NISSAN MAXIMA SCOOP 2, TB/PC	1
14	7 7885	BRACKET, 07 ALTIMA H/S REAR	1
15	1 2110	BOLT; HEX/FLANGE M6 1.0 X 12	4
16	8 4006	EDGE TRIM, 6"	1
17	8 4008	EDGE TRIM, 8"	1
18	9 0429	SCOOP; NISSAN ALTIMA	1
19	32 3091	BRACKET; NISSAN ALTIMA SCOOP 1	1
20	21 203DOS	ELEMENT PARTS KIT OFFSET 3"X5" DRY	1
21	2 1490	TUBE; NISSAN ALTIMA, 2011 2012	1
22	5 273 H	HOSE; ADAPTER 2.75/3.00 X 2 1/2	1
23	9444	HOSE CLAMP, 2.31 3.25"	1
24	40 1003 002	ETI MODULE; NISSAN ALTIMA, PROGRAMMED	1
25	8 207	PLUG; PLASTIC 33MM	1
26	9448	1/2" BNDHOSE CLAMP,2.56" 3.50"	2



Read and understand these instructions BEFORE attempting to install this product. Failure to follow installation instructions and not using the provided hardware may damage the intake tube, throttle body and engine.

The AEM® intake system is a performance product that can be used safely during mild weather conditions. During harsh and inclement weather conditions, you must return your vehicle to stock OEM airbox and intake tract configuration. Failure to follow these instructions will void your warranty.

1. Preparing Vehicle

- a. Make sure vehicle is parked on a level surface.
- b. Set parking brake.
- c. If engine has run in the past two hours, let it cool down.
- d. Disconnect negative battery terminal.
- e. Do not discard stock components after removal of the factory system.

2. Removal of stock system



A. Remove the three Allen head bolts that secure the valve cover in place.



B. Lift up on the bottom of the engine cover and remove it from the vehicle.



C. Remove the two bolts securing the stock intake scoop.



D. Remove the stock intake scoop from the vehicle.



E. Remove the spring clamp securing the PCV hose to the stock intake tube.



F. Remove the hose from the valve cover vent.



G. Unplug the MAF sensor connector.



H. Release the two clips securing the MAF sensor harness to the air box.



I. Remove the 6MM bolt that secures the lower air box in place.



J. Loosen the hose clamp that secures the Inlet tube to the throttle body.



K. Lift up on the bottom of the air box to disengage but do not remove from engine bay.



L. Remove the factory air box system from the vehicle.



M. Remove the six clips on the top of the front grill.



N. Remove the 6MM bolt on the top grill support.



O. Now remove the two 6MM bolts on the bottom of the grill support.



P. Remove the grill support.



Q. on the back side of the grill, there are clips holding the grill in place. Push in each clip one at a time and push the grill forward. Repeat that on all the clips



S. Remove the two 6MM bolts securing the factory air box bracket to the inner engine bay wall.



R. Remove the grill.



T. Cut the radiator support to make room for the AEM front scoop.

3. Installation of AEM Intake System

- a. When installing the intake system, do not completely tighten the hose clamps or mounting hardware until instructed to do so.



B. Install coupler (#23) onto the throttle body and mount the (#22) and (#24) hose clamps as shown.



C. Tighten the (#24) hose clamp on the throttle body end.



D. Place the two adapters (#10) onto the factory rubber grommets as shown.



E. Slide a fender washer (#5) onto each of the M6x35mm bolts (#11) as shown.



F. From underneath the factory rubber grommets slide each bolt and fender washer through so the bolt protrudes through the rubber grommet and adapter as shown.



H. Once properly assembled, tighten the nuts and bolts to secure the adapter assemblies.



J. Insert the rubber plug (#26) into the heat shield hole as shown.



G. Use the provided M6 (#4) nuts to keep the assembly together.



I. Attach the provided bracket (#14) onto the heat shield using two M6 bolts (#7) and two washers (#5).



K. Install the rubber edge trim (#12) onto the top edge of the heat shield.



I. Install the rubber edge trim (#16 and 17) around the intake tube opening in the heat shield (#11).



N. Secure the heat shield to the threaded bolt ends with two washers (#5) and two M6 nuts (#4).



P. Once the heat shield is properly positioned, tighten all nuts to secure the heat shield in place.



M. Place the heat shield in the vehicle's engine bay, ensuring the threaded ends of the bolts from step G align with the openings on the bottom side of the heat shield.



O. Align the heat shield's bracket with the two studs, secure in place using two washers (#5) and the two OEM nuts removed in step 2 S



Q. Install the 3.5" coupler (#2) with two #3 hose clamps onto the heat shields inlet, tighten the hose clamp on the heat shield inlet end.



R. Attach the air inlet hose (#8) to the air intake tube (#6) and loosely secure with a (#3) hose clamp.



S. Install the air inlet hose assembly into the engine bay as shown.



T. Attach bracket (#13) to the air inlet hose and to the radiator support using the provided M6 bolt (#15).



U. Install the mounting block (#9) onto the air inlet hose as shown.



V. Secure the air inlet hose using the OEM bolt and washer (#5) as shown.



W. Mount the bracket (#19) to the air inlet scoop (#18) using one M6 bolt (#15).



X. Install the air inlet scoop into place as shown.



Y. Install the OEM clip as shown.



Z. Secure the air inlet scoop's bracket to the radiator support using one M6 bolt (#15).



AA. Secure the M6 bolt installed in the previous step by attaching one M6 nut (#4) to the end of the bolt that passed through the radiator support.



AB. Secure the air inlet scoop's hardware.



AC. Install the MAF sensor onto the intake tube (#21) using the OEM screws.



AD. Feed the MAF sensor wire harness into the inside area of the heat shield as shown.



AE. Insert the intake pipe into the heat shield.



AF. Mount the AEM air filter (#20) onto the intake tube and secure using a (#22) hose clamp.



AG. Align the intake pipe with the throttle body's coupler and secure the (#22) hose clamp.



AH. Attach the PCV vent hose to the intake pipe's vent. Secure the vent hose with the OEM hose clamp.



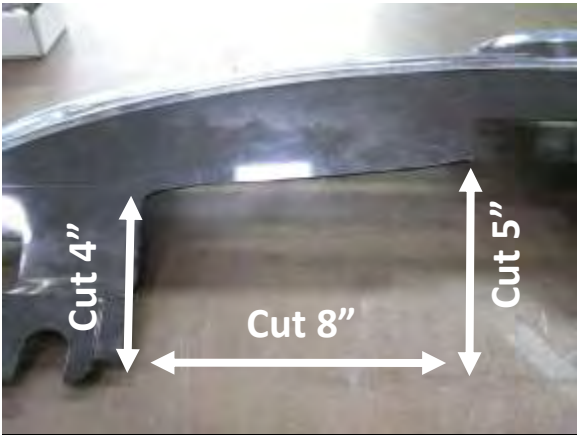
AI. Plug in the ETI (#25).



AJ. Mount the ETI using one 6MM bolt (#15) and 6MM nut (#4).



AK. Now tighten as shown.



AL. Measure and mark the grill. Now cut the grill as shown.



AM. Re install the grill using the factory clips removed in step M.



AEM intake Installed

4. Reassemble Vehicle

- a. Position the inlet pipes for the best fitment. Be sure that the pipes or any other components do not contact any part of the vehicle. Tighten any rubber mounts (if applicable), all bolts, and hose clamps.
- b. Check for proper hood clearance. Re-adjust pipes if necessary and re-tighten them.
- c. Inspect the engine bay for any loose tools and check that all fasteners that were moved or removed are properly tightened.
- d. Reconnect the negative battery terminal and start the engine. Let the vehicle idle for 3 minutes. Perform final inspection before driving the vehicle.

5. CARB Sticker Placement

- a. The C.A.R.B. exemption sticker, (attached), must be visible under the hood so than an emissions inspector can see it when the vehicle is required to be tested for emissions. California requires testing every two years, other states may vary.

6. Service and Maintenance

- a. AEM Induction Systems requires cleaning the intake system's air filter element every 100,000 miles. When used in dusty or off-road environments, our filters will require cleaning more often. We recommend that you visually inspect your filter once every 25,000 miles to determine if the screen is still visible. When the screen is no longer visible some place on the filter element, it is time to clean it. To clean, purchase our Synthetic air filter cleaner, part number 1-1000 and follow the easy instructions.
- b. Use window cleaner to clean your powder coated AEM[®] intake tube. **NOTE: DO NOT USE aluminum polish on powder coated AEM[®] intake tubes.**

For Technical inquiries
E mail us at
sales@aemintakes.com
Or
Call us at
800.992.3000

AEM[®] Air Intake System Warranty Policy

AEM[®] warrants that its intake systems will last the life of your vehicle. AEM[®] will not honor this warranty due to mechanical damage (i.e. improper installation or fitment), damage from misuse, accidents or flying debris. AEM[®] will not warrant its powder coating if the finish has been cleaned with a hydrocarbon-based solvent. The powder coating should only be cleaned with a mild soap and water solution. Proof of purchase of both the vehicle and AEM[®] intake system is required for redemption of a warranty claim.

This warranty is limited to the repair or replacement of the AEM[®] part. In no event shall this warranty exceed the original purchase price of the AEM[®] part nor shall AEM[®] be responsible for special, incidental or consequential damages or cost incurred due to the failure of this product. Warranty claims to AEM[®] must be transportation prepaid and accompanied with dated proof of purchase. This warranty applies only to the original purchaser of product and is nontransferable. Improper use or installation, use for racing, accident, abuse, unauthorized repairs or alterations voids this warranty. AEM disclaims any liability for consequential damages due to breach of any written or implied warranty on all products manufactured by AEM[®]. Warranty returns will only be accepted by AEM[®] when accompanied by a valid Return Merchandise Authorization (RMA) number. Credit for the defective products will be issued pending inspection. Product must be received by AEM[®] within 30 days of the date RMA is issued.

If you have a warranty issue, please call (800) 992-3000 and our customer service department will assist you. A proof of purchase is required for all AEM[®] warranty claims.