



Equipped with AEM® Dryflow™ Filter  
No Oil Required!

## INSTALLATION INSTRUCTIONS

### PART NUMBER: 21-680

---

2008-2009

SCION tC

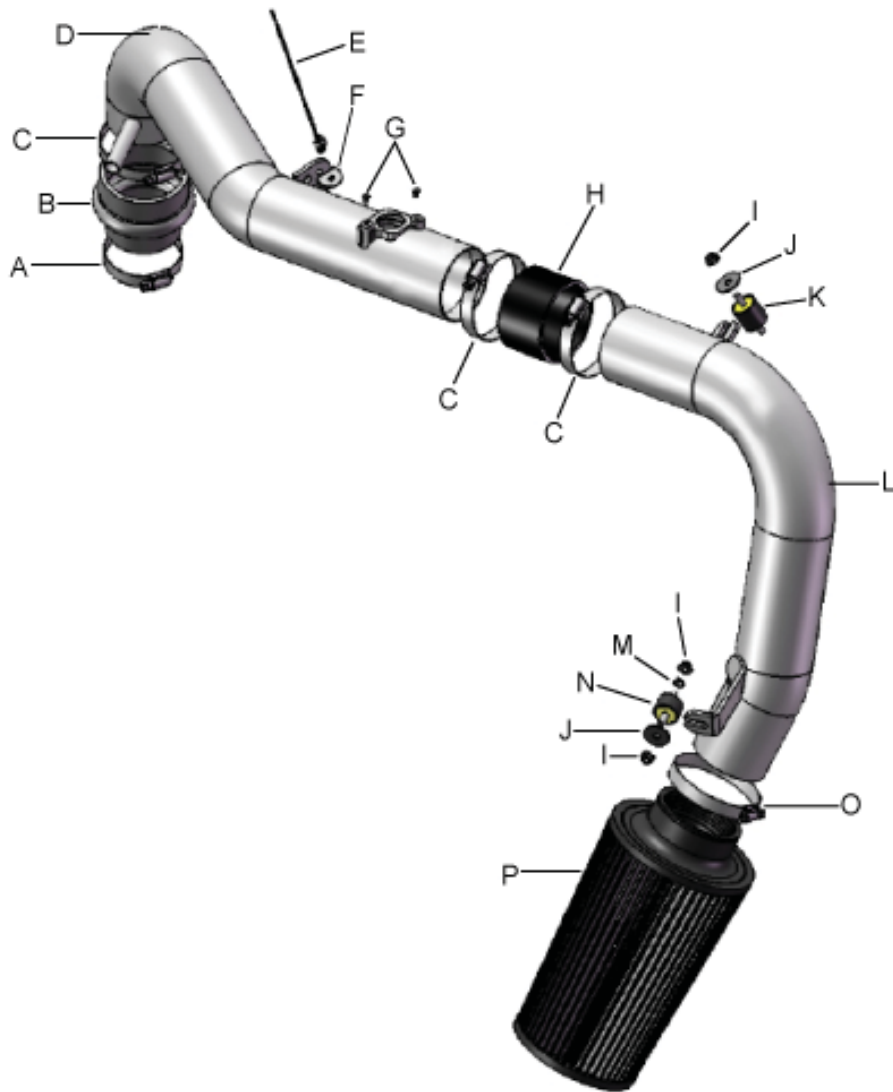
L4-2.4L

SEE \* NOTE

\* NOTE: Legal in California only for racing vehicles which may never be used upon a highway

## PARTS LIST

	Description	Qty.	Part Number
A	1/2' Bndhose Clamp, 2.15-3.00"	1	9440
B	Hose, Hump 2.50/3.00x3.00"	1	5-574
C	1/2" Bnd. Hose Clamp, 2.56"-3.50"	3	9448
D	Upper Pipe	1	2-6801
E	Zip Tie, 8" Tree Push-Mnt.	1	1-127
F	Bracket	1	7-7717
G	Bolt,Btn. Hd. M4-0.7 X 6mm	2	1-2051
H	Hose, Silicone 3.00x2" Black	1	5-302
I	Nut, M6 Hex Serrated	3	444.460.04
J	Washer, 6mm Soft Mount	2	08160
K	Mount, Rubber 5/8" X 6mm	1	1228598
L	Lower Pipe	1	2-6802
M	Washer, M6 Ext. Tooth Lock	1	1-3041
N	Mount, Rubber 1" X 6mm	1	1228599
O	1/2" Bnd. Hose Clamp, 2.90"-3.75"	1	9452
P	Air Filter Assy. 3.00 X 8" Dry Element	1	21-2038DK



Read and understand these instructions **BEFORE** attempting to install this product. Failure to follow installation instructions and not using the provided hardware may damage the intake tube, throttle body and engine.

The AEM® intake system is a performance product that can be used safely during mild weather conditions. During harsh and inclement weather conditions, you must return your vehicle to stock OEM air box and intake tract configuration. Failure to follow these instructions will void your warranty.

## 1. Preparing Vehicle

- a. Make sure vehicle is parked on level surface.
- b. Set parking brake.
- c. If engine has run in the past two hours, let it cool down.
- d. Disconnect negative battery terminal.
- e. Do not discard stock components after removal of the factory system.

## 2. Removal of stock system



a. Disconnect the mass air flow (MAF) sensor.



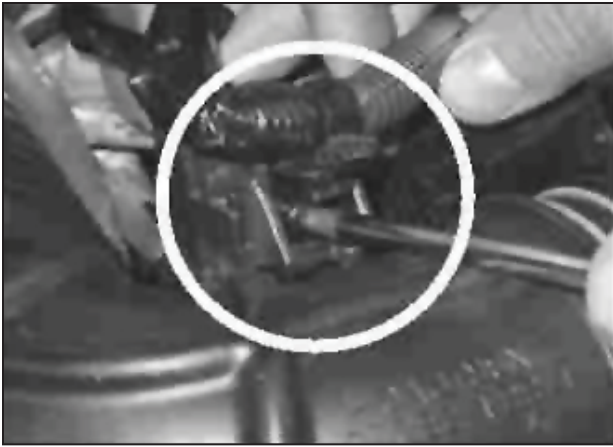
b. Disconnect breather hose from intake tube.



c. Remove the MAF sensor from the air box assembly. The MAF sensor will be reinstalled with the AEM® intake system.



d. Unclip VSV hose from intake tube.



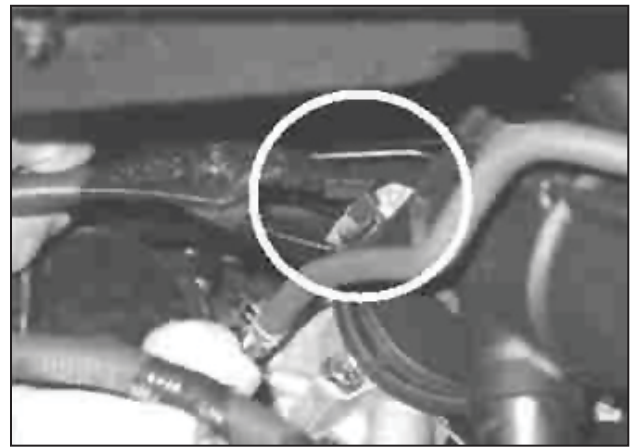
e. Remove the VSV from intake tube by removing this screw. The VSV will be reinstalled with the AEM® intake system.



f. Remove wire harness bracket, use needle nose pliers to unclip.



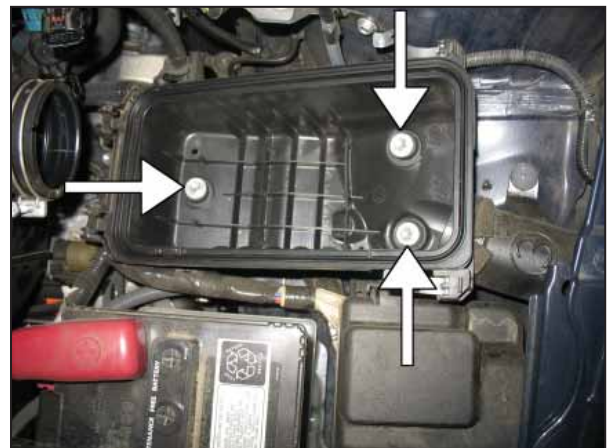
g. Unclip the air box lid, but do not remove.



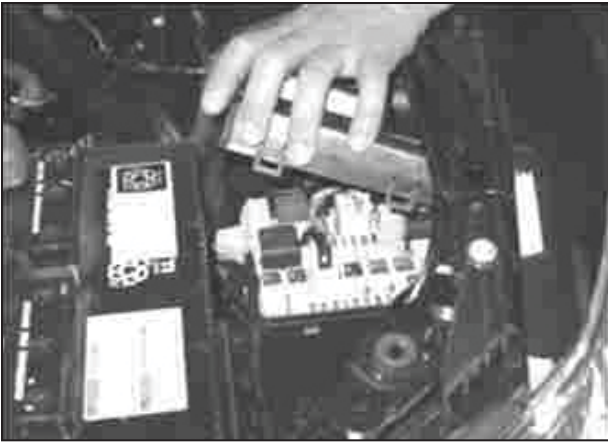
h. Release hose clamp securing the intake tube to the throttle body. Then remove the intake tube/air box lid assembly.



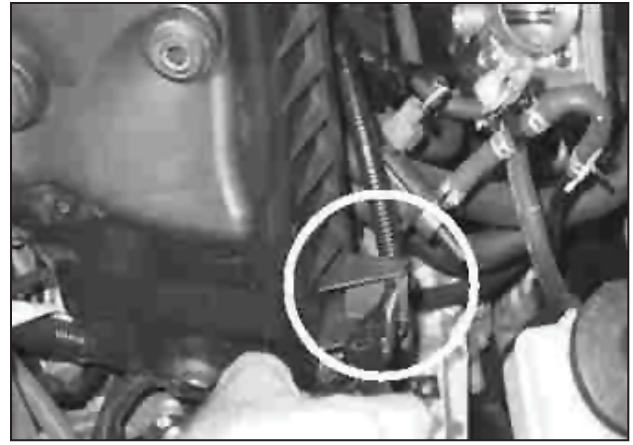
i. Remove the air filter element.



j. Remove the 3 bolts holding the lower air box in place.



k. Remove the fuse box lid.



l. Tilt the air filter housing up towards the engine and use needle-nose pliers to unclip the MAF sensor / VSV wire harness from the housing. Remove the lower air box from the vehicle.



m. Remove upper clip securing the lower intake tube.



n. Remove second clip from lower intake tube. Then remove the lower intake tube.



o. Raise the front of the vehicle with a jack. Refer to your owner's manual for proper jack and jack stand placement to properly support vehicle. Support your vehicle using properly rated jack stands before wheel removal or while working under the vehicle.  
**NEVER WORK UNDER A VEHICLE WITHOUT USING JACK STANDS.**  
Remove the driver side front wheel.



p. Remove the driver side splash shield.



q. Remove the screw and clips securing the driver side fender liner.



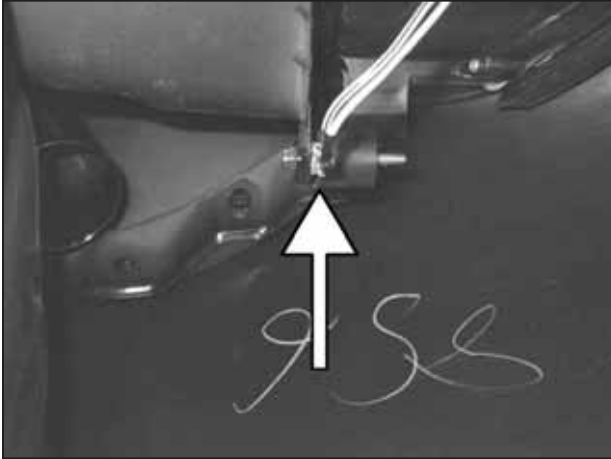
r. Pull the driver side fender liner away from front fender and secure it behind the front brake rotor.



s. Remove bolt securing ground wire to the chassis.

### 3. Installation of AEM® Intake System

a. When installing the intake system, do not completely tighten the hose clamps or mounting hardware until instructed to do so.



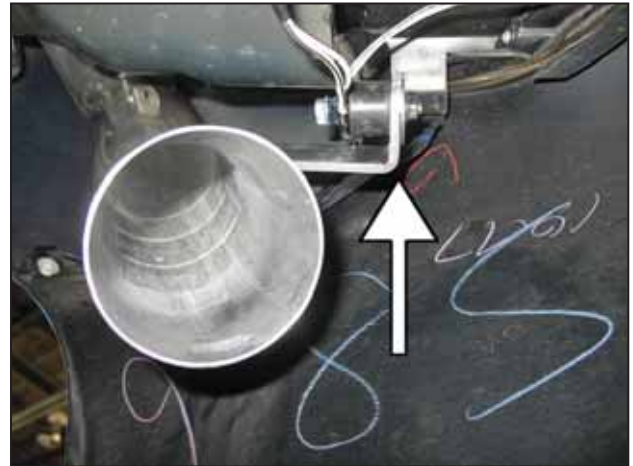
b. Secure the ground strap to the chassis with the short rubber mount (1228599), M6 star washer and M6 nut in the order shown.



c. Install the long rubber mount (1228598).



d. Install the lower intake pipe from inside the wheel well. **Use care to avoid scratching the pipe's finish.** Slide the upper bracket over rubber mount and loosely secure it with a 6mm washer and 6mm nut.



e. Loosely secure the lower bracket with the 6mm washer and 6mm nut.



f. Attach the air filter to the lower intake pipe and secure with #52 hose clamp.



g. Install the MAF sensor into the upper intake pipe using supplied bolts (1-2051).



h. Install the small end of the hump hose (5-574) onto the throttle body and secure with #40 hose clamp. Install a #48 hose clamp loosely over the large end of the hump hose.



i. Slide the coupler (5-302) and two #48 hose clamps over the lower intake pipe.



j. Install the upper intake pipe into the hump hose connected to the throttle body.



k. Align the upper intake pipe with the lower intake pipe and slide the coupler over the upper pipe so that the coupler covers both tubes evenly. Loosely secure the #48 hose clamps.





l. Remove short vacuum hose from the VSV and route the long vacuum hose around the outside of the short vacuum hose.



m. Use the screw removed in step 2e to secure the VSV and harness bracket (7-7717) to the bracket on the upper intake pipe. Reconnect the short vacuum line.



n. Reconnect the MAF sensor wire harness.



o. Use zip tie tree (1-127) to secure wire harness.



p. Connect the breather hose to the nipple on the upper intake pipe as shown.



Factory air box system installed



AEM® intake system installed

#### 4. Reassemble Vehicle

- a. **Fender liner and splashguard:** Install the fender liner, lower splash guard and any hardware that was removed in steps 2(p) through 2(r).  
**NOTE: Failure to install the fender liner will result in diminished performance and increase the potential for engine damage due to water ingestion in rainy conditions.**
- b. **Wheel:** Install the driver side wheel using the factory torque specification (see owner's manual).
- c. Reinstall the fuse cover removed in step 2(k).
- d. Position the inlet pipes for the best fitment. Be sure that the pipes or any other components do not contact any part of the vehicle. Tighten the rubber mount, all bolts, and hose clamps.
- e. Check for proper hood clearance. Re-adjust pipes if necessary and re-tighten them.
- f. Inspect the engine bay for any loose tools and check that all fasteners that were moved or removed are properly tightened.
- g. Reconnect negative battery terminals and start engine. Let the vehicle idle for 3 minutes. Perform a final inspection before driving the vehicle.

#### 5. Service and Maintenance

- a. It is recommended that you service your AEM® Dryflow™ filter every 20,000 miles for optimum performance. Use AEM Dryflow cleaning kit part # 21-110.
- b. Use aluminum polish to clean your polished AEM® intake tube.
- c. Use window cleaner to clean your powder coated AEM® intake tube. **(NOTE: DO NOT USE aluminum polish on powder coated AEM intake tubes).**

For technical inquiries  
e-mail us at  
[sales@aemintakes.com](mailto:sales@aemintakes.com)  
or  
call us at  
800.992.3000

## **AEM Air Intake System Warranty Policy**

AEM® warrants that its intake systems will last for the life of your vehicle. AEM will not honor this warranty due to mechanical damage (i.e. improper installation or fitment), damage from misuse, accidents or flying debris. AEM will not warrant its powder coating if the finish has been cleaned with a hydrocarbon-based solvent. The powder coating should only be cleaned with a mild soap and water solution. Proof of purchase of both the vehicle and AEM intake system is required for redemption of a warranty claim.

This warranty is limited to the repair or replacement of the AEM part. In no event shall this warranty exceed the original purchase price of the AEM part nor shall AEM be responsible for special, incidental or consequential damages or cost incurred due to the failure of this product. Warranty claims to AEM must be transportation prepaid and accompanied with dated proof of purchase. This warranty applies only to the original purchaser of product and is nontransferable. Improper use or installation, use for racing, accident, abuse, unauthorized repairs or alterations voids this warranty. AEM disclaims any liability for consequential damages due to breach of any written or implied warranty on all products manufactured by AEM. Warranty returns will only be accepted by AEM when accompanied by a valid Return Merchandise Authorization (RMA) number. Credit for defective products will be issued pending inspection. Product must be received by AEM within 30 days of the date RMA is issued.

If you have a warranty issue, please call (800) 992-3000 and our customer service department will assist you. A proof of purchase is required for all AEM warranty claims.