



Equipped with AEM® Dryflow™ Filter
No Oil Required!

INSTALLATION INSTRUCTIONS

PART NUMBER: 21-475

2005-2006 SUBARU Legacy GT H4-2.5L Turbo	C.A.R.B. E.O. # D-670
2005-2006 SUBARU Outback XT H4-2.5L Turbo	C.A.R.B. E.O. # D-670

* **NOTE:** Legal in California only for racing vehicles which may never be used upon a highway

PARTS LIST

Description	Qty.	Part Number
Element Parts Kit 2.75 X 5" Dry Ele.	1	21-202DK
Splash Shield	1	20-475
Inlet Pipe	1	2-590
Hose, Hump 2.75/2.75x3.00"	1	5-575
Mount, Rubber 5/8" X 6mm	2	1228598
Zip Tie, 8" Tree Push-Mnt.	1	1-127
Bolt, Socket 8-32 X 1/2"	2	1-2028
Bolt, Hex/Flange M6-1 X 20	2	1-2038
Washer, 6mm Soft Mount	1	559999
Nut, M6 Hex Serrated	2	444.460.04
1/2" Bnd. Hose Clamp, 2.31-3.25"	2	9444
1/2" Bnd Hose Clamp, 2.56"-3.50"	1	9448

Read and understand these instructions **BEFORE** attempting to install this product. Failure to follow installation instructions and not using the provided hardware may damage the intake tube, throttle body and engine.

The AEM® intake system is a performance product that can be used safely during mild weather conditions. During harsh and inclement weather conditions, you must return your vehicle to stock OEM air box and intake tract configuration. Failure to follow these instructions will void your warranty.

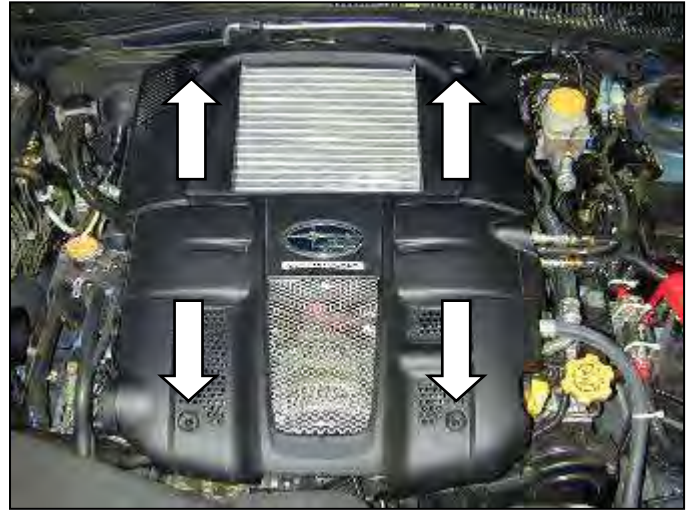
1. Preparing Vehicle

- a. Make sure vehicle is parked on level surface.
- b. Set parking brake.
- c. If engine has run in the past two hours, let it cool down.
- d. Disconnect negative battery terminal.
- e. Do not discard stock components after removal of the factory system.

2. Removal of stock system



a. Factory air box system installed.



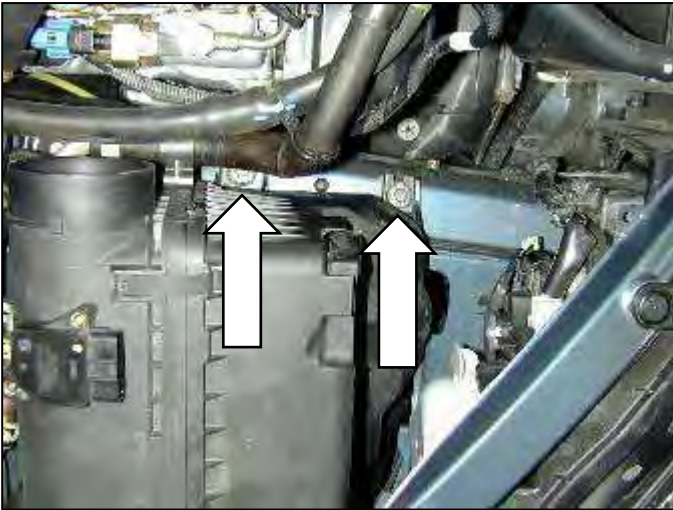
b. Remove four plastic tabs securing engine cover. Remove engine cover. Retain tabs.



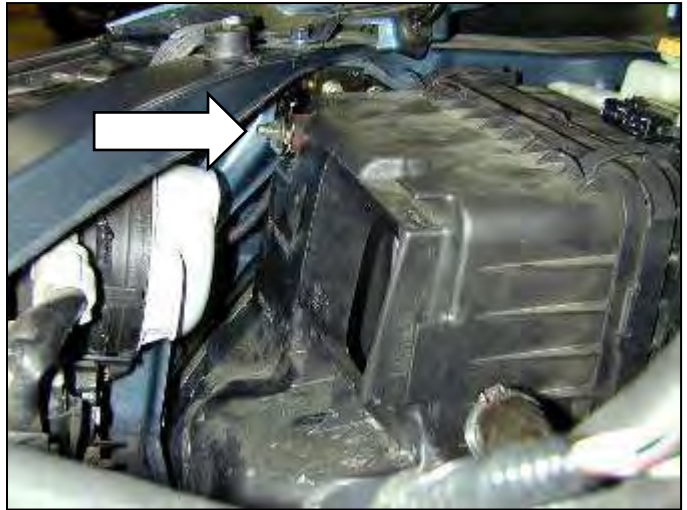
c. Remove two bolts to the air box air duct. Remove air duct.



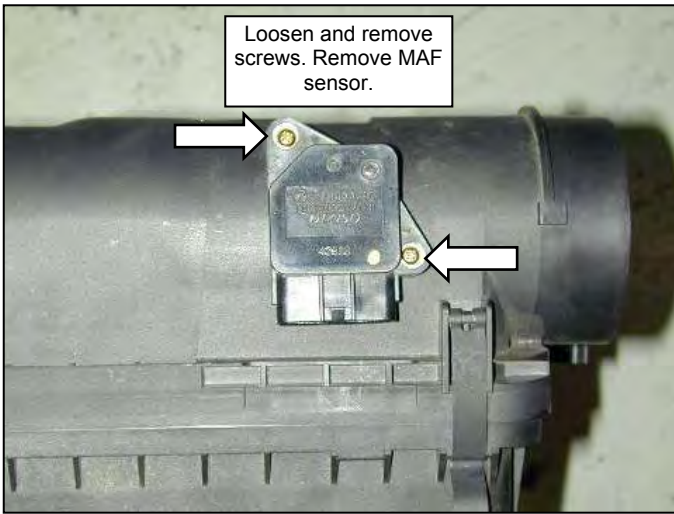
d. Unplug the MAF sensor.



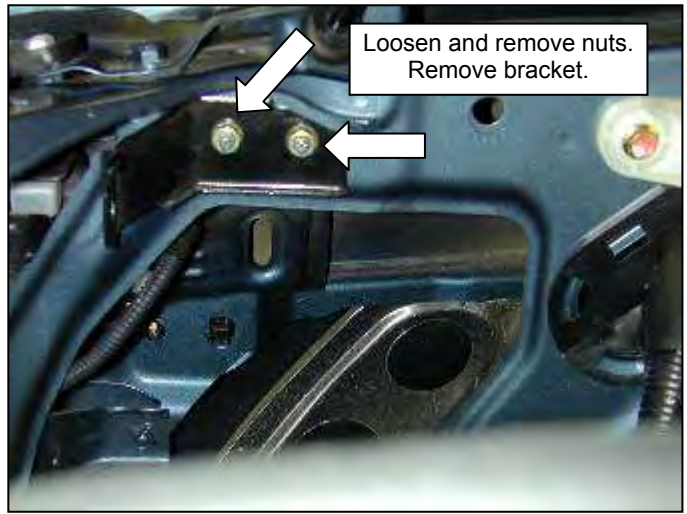
e. Loosen and remove bolts. Retain bolts.



f. Loosen and remove nut. Remove air box assembly.



g. Remove MAF sensor. Be careful not to damage this sensor. Set aside in a safe area.



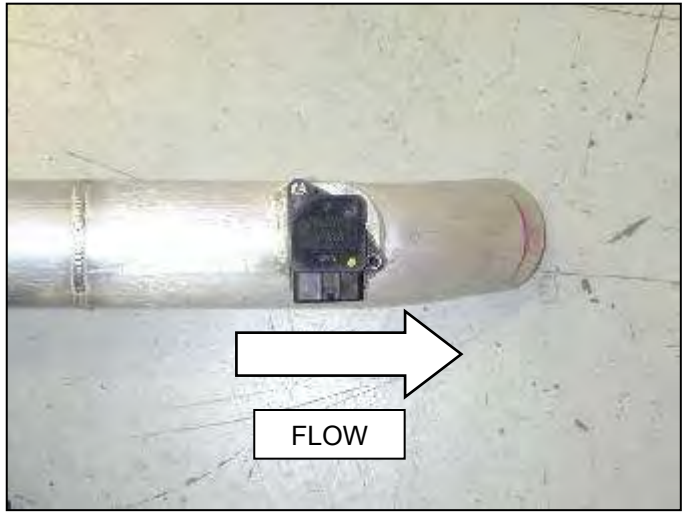
h. Loosen and remove nuts securing air box mounting bracket. Remove the bracket.

3. Installation of AEM® intake system.

a. When installing the intake system, do not completely tighten the hose clamps or mounting hardware until instructed to do so.



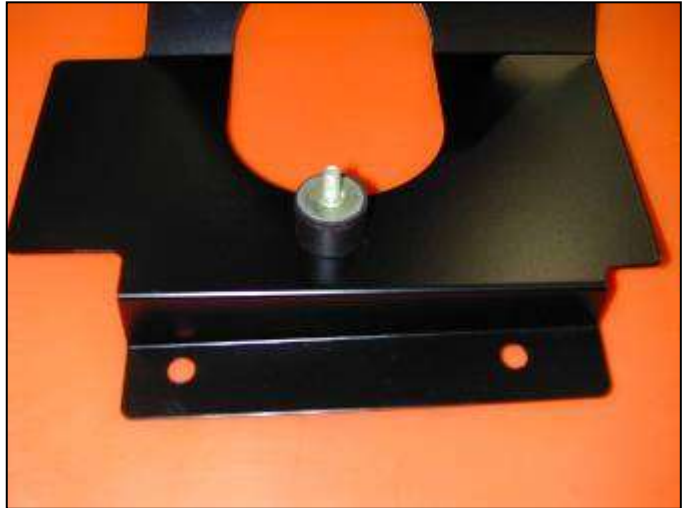
b. Attach 2.75" hump hose to the plastic turbo inlet. Attach hose clamps but do not tighten.



c. Insert the MAF sensor into the intake pipe. Tighten with provided hardware.



d. Attach the air filter and tighten.



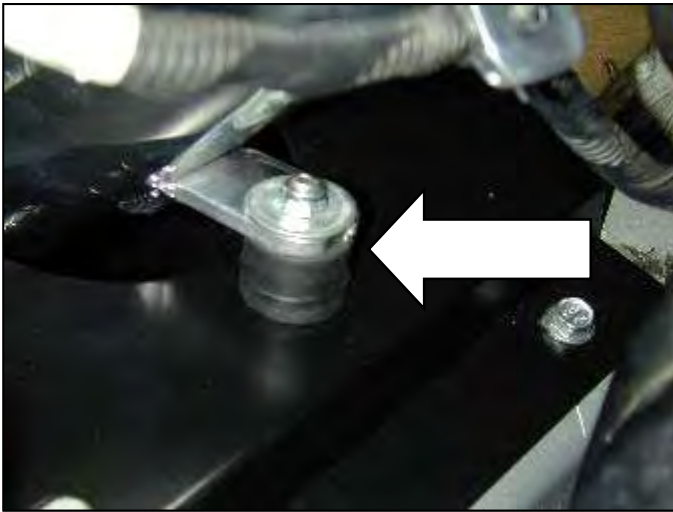
e. Insert rubber mount into the heat shield.



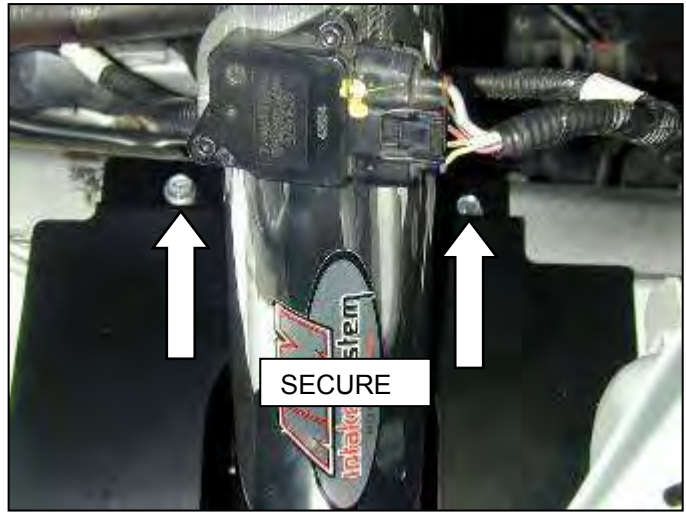
f. Secure rubber mount with washer and Nylok nut. Place the intake into the cavity left by the air box filter first.



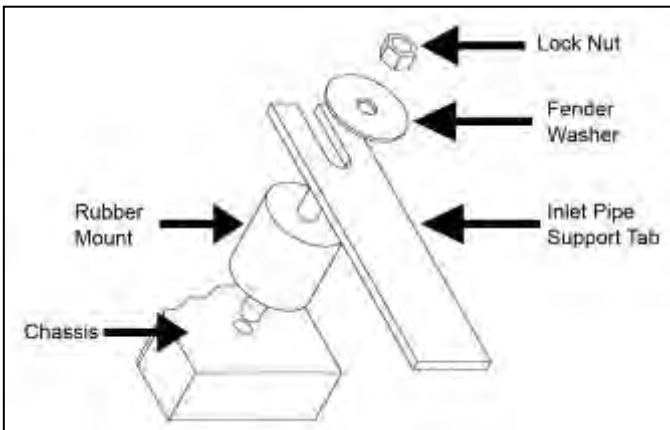
g. Place the heat shield over the intake pipe. Secure the heat shield to the upper two mounting studs left by the air box bracket.



i. Check clearance around the pipe. Secure the bracket to the rubber mount. See diagram below.



j. Secure lower half of the heat shield using the factory bolts.



k. Plug in MAF Sensor. Secure MAF sensor with push-in zip tie to the tab on the underside of the intake pipe.

4. Reassemble Vehicle

- a. Position the inlet pipes for the best fitment. Be sure that the pipes or any other components do not contact any part of the vehicle. Tighten the rubber mount, all bolts, and hose clamps.
- b. Check for proper hood clearance. Re-adjust pipes if necessary and re-tighten them.
- c. Inspect the engine bay for any loose tools and check that all fasteners that were moved or removed are properly tightened.
- d. Reconnect negative battery terminals and start engine. Let the vehicle idle for 3 minutes. Perform a final inspection before driving the vehicle.

5. CARB Sticker Placement

- a. The C.A.R.B. exemption sticker, (attached), must be visible under the hood so that an emissions inspector can see it when the vehicle is required to be tested for emissions. California requires testing every two years, other states may vary.

6. Service and Maintenance

- a. It is recommended that you service your AEM[®] Dryflow™ filter every 20,000 miles for optimum performance. Use AEM Dryflow cleaning kit part # 21-110.
- b. Use aluminum polish to clean your polished AEM[®] intake tube.
- c. Use window cleaner to clean your powder coated AEM[®] intake tube. **(NOTE: DO NOT USE aluminum polish on powder coated AEM intake tubes).**

For technical inquiries
e-mail us at
sales@aemintakes.com
or
call us at
800.992.3000

AEM Air Intake System Warranty Policy

AEM[®] warrants that its intake systems will last for the life of your vehicle. AEM will not honor this warranty due to mechanical damage (i.e. improper installation or fitment), damage from misuse, accidents or flying debris. AEM will not warrant its powder coating if the finish has been cleaned with a hydrocarbon-based solvent. The powder coating should only be cleaned with a mild soap and water solution. Proof of purchase of both the vehicle and AEM intake system is required for redemption of a warranty claim.

This warranty is limited to the repair or replacement of the AEM part. In no event shall this warranty exceed the original purchase price of the AEM part nor shall AEM be responsible for special, incidental or consequential damages or cost incurred due to the failure of this product. Warranty claims to AEM must be transportation prepaid and accompanied with dated proof of purchase. This warranty applies only to the original purchaser of product and is nontransferable. Improper use or installation, use for racing, accident, abuse, unauthorized repairs or alterations voids this warranty. AEM disclaims any liability for consequential damages due to breach of any written or implied warranty on all products manufactured by AEM. Warranty returns will only be accepted by AEM when accompanied by a valid Return Merchandise Authorization (RMA) number. Credit for defective products will be issued pending inspection. Product must be received by AEM within 30 days of the date RMA is issued.

If you have a warranty issue, please call (800) 992-3000 and our customer service department will assist you. A proof of purchase is required for all AEM warranty claims.