

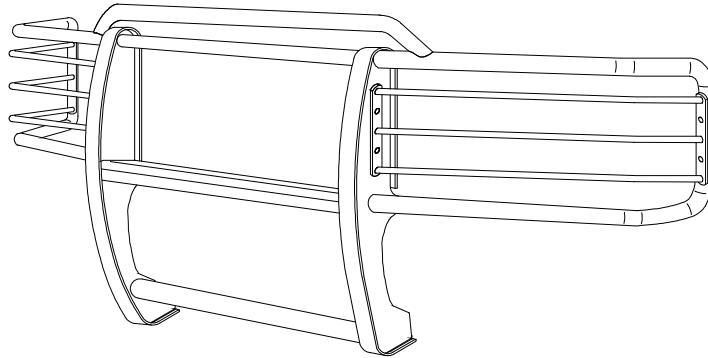


INSTALLATION INSTRUCTIONS

APPLICATION: 2003-UP GMC SIERRA 1500/2500 LD,
1500/2500/3500 HD, 2/4 WHEEL DRIVE

AUTOMOTIVE PRODUCTS, INC.

SPORTSMAN
ASSEMBLY
40-1225

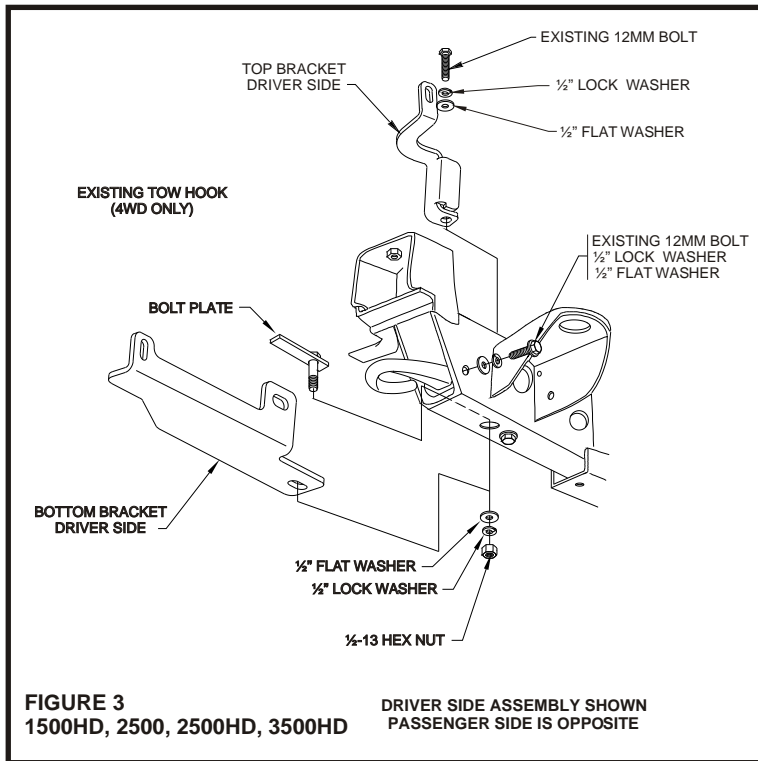
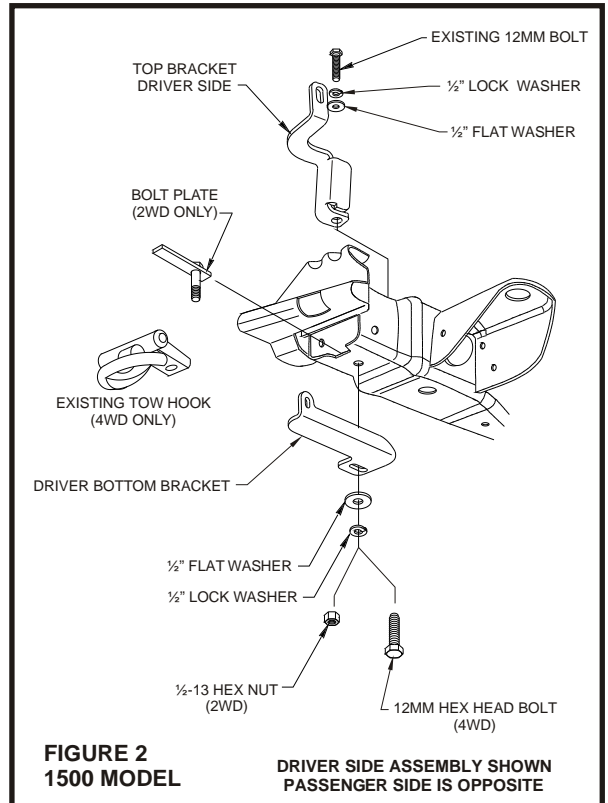
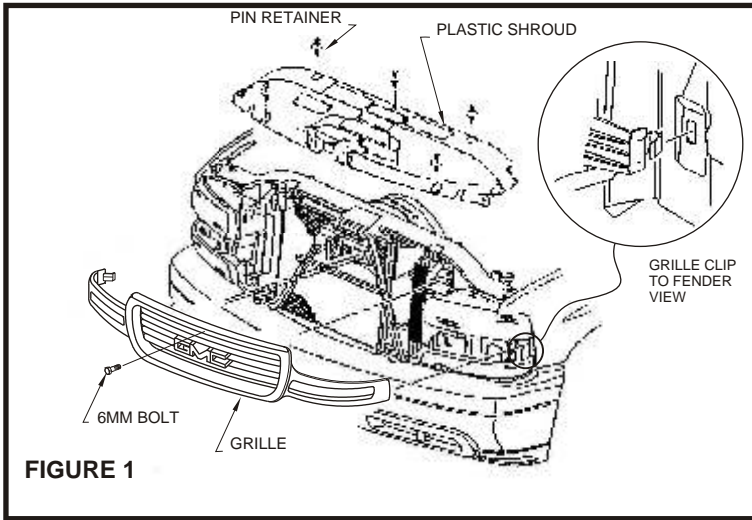


QTY	PARTS KIT CONTENTS DESCRIPTION	TOOLS REQUIRED
1	SPORTSMAN ASSEMBLY WITH LIGHT GUARDS	9/16" SOCKET
2	TOP BRACKET	3/4" SOCKET
2	BOTTOM BRACKET	18MM SOCKET
4	3/8 -16 X 1.25" LG. HEX HEAD BOLT	10MM SOCKET
8	3/8" FLAT WASHER, ZINC PLATED	RATCHET
4	3/8" LOCK WASHER, ZINC PLATED	TORQUE WRENCH
4	3/8 -16 HEX NUT, ZINC PLATED	PHILLIPS SCREWDRIVER
2	BOLT PLATE	SMALL FLAT SCREWDRIVER
4	1/2" FLAT WASHER	19MM SOCKET
4	1/2" LOCK WASHERS	SOCKET EXTENSION
2	1/2 -13 HEX NUT	9/16" WRENCH
NOTE: SOME FASTENERS MAY NOT BE USED		

- STEP 1. Remove the contents from the box and check for any damage. Verify all parts against the parts list.
- STEP 2. Read and understand instructions completely before beginning installation.
- STEP 3. Remove plastic shroud above grille by removing the seven pin retainers. Pull center pin up with small flat screwdriver. See Figure 1.
- STEP 4. Remove grille from truck by removing 6mm bolt from top of grille. Then pull on outer edge of grille by applying firm pressure away from the fender, repeat on the opposite side and center section. Carefully remove grille from vehicle. See Figure 1.
- STEP 5. To install top brackets, remove both 12mm factory bumper bolts from top of frame (located behind the top side of bumper), then replace with top mount brackets, (2) 1/2" lock washer and existing 12mm bolts previously removed. See Figures 2 and 3.
- STEP 6. To install bottom brackets on 1500 models, remove 12mm bolts from bottom side of frame (4X4 only). Position bottom bracket as shown and reinstall 12mm bolts (2) 1/2" flat washer, (2) 1/2" lock washer finger tight, for 2WD use the bolt plates (2) 1/2" flat washers, (2) 1/2" lock washers, (2) 1/2" hex nuts provided. To install bottom brackets on 1500HD, 2500, 2500HD and 3500HD remove the outer 12mm tow hook bolts. Insert the bolt plate into the frame from the front of the vehicle and attach brackets using (2) 1/2" flat washers, (2) 1/2" lock washers and (2) 1/2" hex nuts and using existing 12mm bolts with (2) 1/2" lock washers and (2) 1/2" lock washers. See Figures 2 and 3.
- STEP 7. Raise the Sportsman up to the brackets and attach using 3/8" hardware and hand tighten. Adjust Sportsman to center of truck and torque all fasteners at the frame locations only to: 1/2" fasteners = 65 FT. LBS; 12mm fasteners = 60 FT. LBS.

STEP 8. Remove Sportsman from brackets and re-install vehicle grille and plastic shroud in the opposite order of removal.

STEP 9. Re-attach Sportsman to brackets and tighten the 3/8" bolts to 30 FT. LBS.



Finish protection - Westin products have a high quality finish that must be cared for like any other exposed finish on the vehicle. Protect the finish with a non-abrasive automotive wax (pure carnauba, for example) on a regular basis. The use of cleaner wax or any compound which contains an abrasive is detrimental, as the compounds scratch the finish and open it to corrosion.



Westin Automotive Products, Inc.
5200 N. Irwindale Ave. Suite 220
Irwindale, Ca. 91706

Thank You for choosing Westin products
For additional installation assistance please call
Customer service (800) 793-7846 or (507) 375-3559