



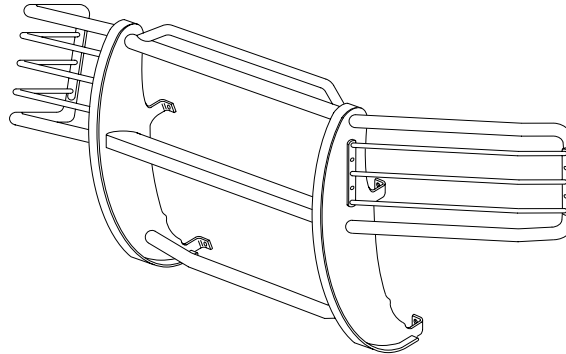
INSTALLATION INSTRUCTIONS

APPLICATION: 1994-2001 DODGE RAM

AUTOMOTIVE PRODUCTS, INC.

SPORTSMAN
ASSEMBLY

40-0605



QTY	PARTS KIT CONTENTS		TOOLS REQUIRED
	DESCRIPTION		
1	SPORTSMAN ASSEMBLY WITH LIGHT GUARDS		9/16" WRENCH
2	TOP CLAMP ASSEMBLY		9/16" SOCKET
2	BOTTOM FRAME BRACKET		19MM SOCKET
2	BOTTOM SPACER		18MM SOCKET
2	1/2" FLAT WASHER		RATCHET
2	1/2" LOCK WASHER		SOCKET EXTENSION
2	3/8-16 X 1.25" HEX HEAD BOLT		TORQUE WRENCH
2	3/8-16 X 1.50" HEX HEAD BOLT		7/16" DRILL BIT
8	3/8" FLAT WASHER		DRILL
4	3/8" LOCK WASHER		
4	3/8-16" HEX NUT		
2	M12-1.75 X 120MM FULL THREAD HEX HEAD BOLT		
2	BLACK RUBBER U-CHANNEL		
NOTE: FASTENERS ARE CONTAINED IN BOLT KIT 60-1218.			

STEP 1. Remove the contents from the box and check for any damage. Verify all parts against the parts list.

STEP 2. Read and understand instructions completely before beginning installation.

STEP 3. Raise hood. Hook Top Bumper Clamp over back edge of bumper. Be sure the bumper metal is hooked in the small slot in the Bumper Clamp. NOTE: To help prevent scratching the bumper, apply duct tape or masking tape to the areas of the bumper where the Sportsman may contact it. Remove tape after installation is complete.

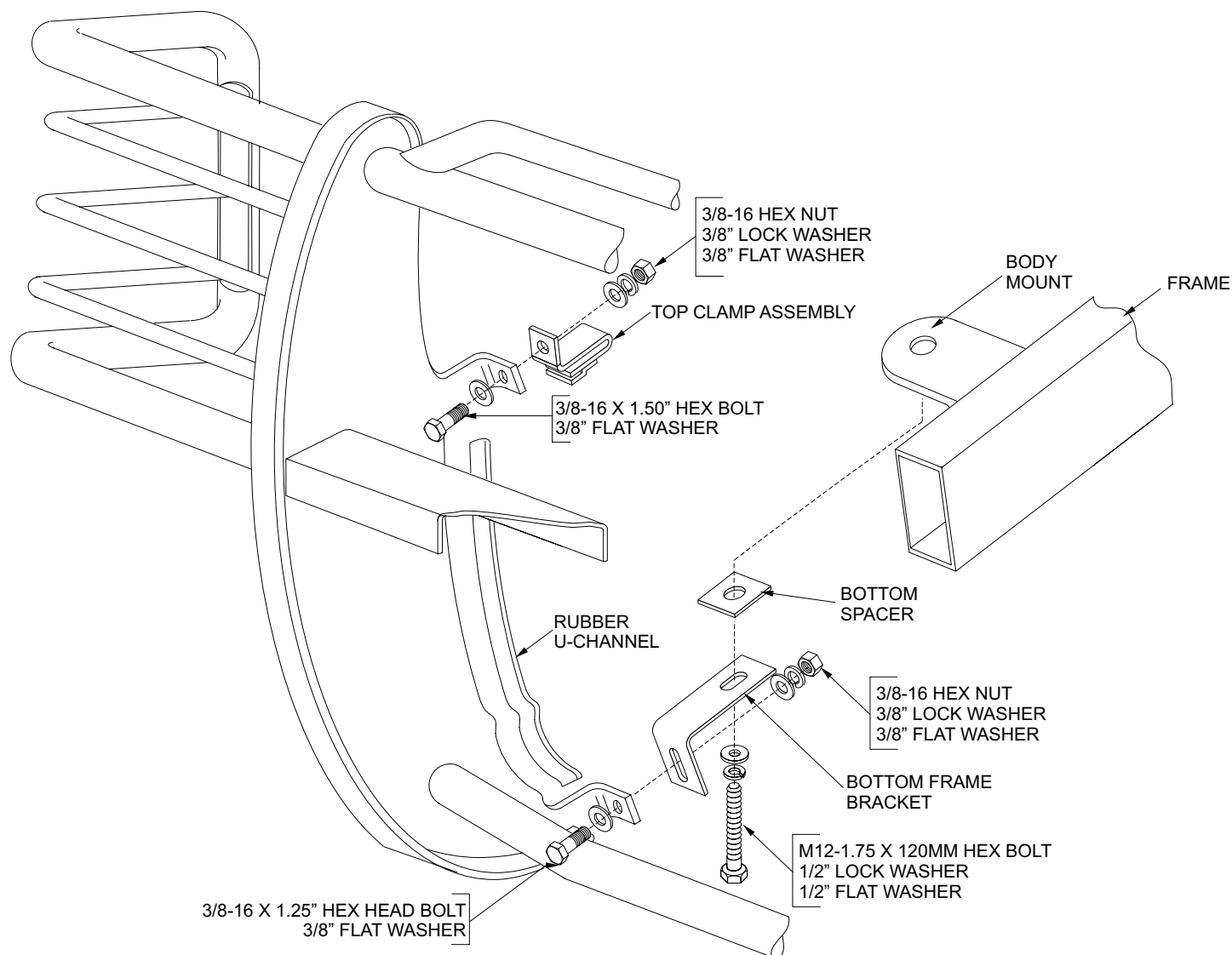
STEP 4. Place black rubber u-channel on the inside of the sportsman uprights in the bumper profile.

STEP 5. Position Sportsman Assembly up to bumper and bolt to top bumper clamps with (2) 3/8-16 X 1.50" hex head bolts, (4) 3/8" flat washers, (2) 3/8" lock washers, and (2) 3/8-16" hex nuts. Do not tighten.

STEP 6. Drill a 7/16" diameter hole through the front of air dam at the lower mount tab location. Remove the two front body mount bolts. Bolt the bottom frame brackets to the body mounts using (2) M12-1.75 x 120MM hex head bolts, (2) 1/2" lock washers and (2) 1/2" flat washers, 1/4" spacers are placed between the body mount and frame bracket. Bolt the bottom tab on upright through the air dam to the bottom frame bracket using (2) 3/8-16 x 1.25" bolts, (4) 3/8" flat washers, (2) 3/8" lock washer and (2) 3/8-16" hex nuts as shown. Torque body mount bolts to 65 Ft. Lbs.

STEP 7. Check to be sure the Sportsman is centered and level. Tighten 3/8" fasteners at the top and bottom brackets until uprights are tight against the bumper. There may be a gap between the brackets and the upright tab. This is allowable to insure the Sportsman will pull up tight against the bumper.

STEP 8. Lower hood SLOWLY! Check to be sure vehicle grille does not contact top bracket. If there is clearance push down on hood to lock. If there is contact, the Sportsman and/or bumper may need to be adjusted to allow for proper clearance.



Finish protection - Westin products have a high quality finish that must be cared for like any other exposed finish on the vehicle. Protect the finish with a non-abrasive automotive wax (pure carnauba, for example) on a regular basis. The use of cleaner wax or any compound which contains an abrasive is detrimental, as the compound scratches the finish and opens it to corrosion.