



INTAKE SYSTEMS FOR VEHICLES LISTED ARE 50 STATE LEGAL. SEE KNFILTERS.COM FOR CARB STATUS ON EACH PART FOR A SPECIFIC VEHICLE.

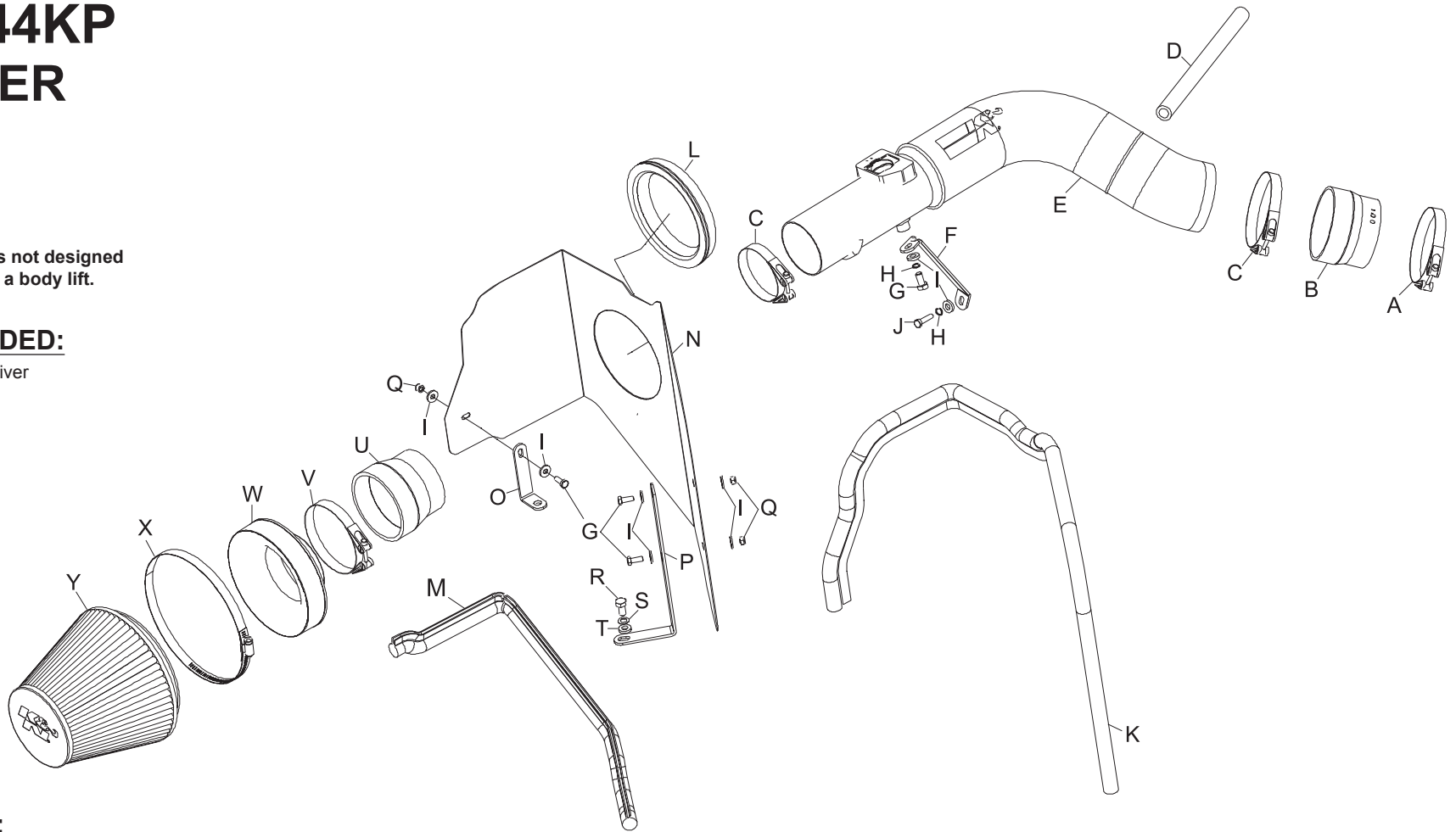
# INSTALLATION INSTRUCTIONS

## 77-3044KP HUMMER 2006 H3 L5-3.5L

NOTE: This kit was not designed to fit vehicles with a body lift.

### TOOLS NEEDED:

- Flat Blade Screwdriver
- Ratchet
- Extension
- 7/32" Socket
- 10mm Socket
- 13mm Socket
- 10mm Wrench
- 13mm Wrench
- 9/64"mm Allen



### PARTS LIST:

Description	Qty.	Part #	Description	Qty.	Part #	Description	Qty.	Part #
A hose clamp #56	1	08620	J bolt; 6mm-1.00 x 25mm hexhead	1	07704	S washer; 8mm wave	1	08239
B hose; 3.5" id to 3.0" id tprd	1	08051	K edge trim 44"	1	102486	T washer; 5/16" id x 5/8", flat	1	08276
C hose clamp #56	2	08620	L edge trim 18"	1	102500	U hose; 3.5" id to 3.25" id tprd	1	08724
D hose; 1/2" id x 12" l, silicone	1	087031	M edge trim 26"	1	102488	V hose clamp #56	1	08620
E intake tube	1	27181KP	N heat shield	1	074025	W adapter #380	1	21512-1
F bracket; "C" tube mount	1	010108	O bracket; small "L"	1	070602	X hose clamp #104	1	08697
G bolt; 6mm-1.00 x 16mm, hexhead	4	07703	P bracket; large "L"	1	010060	Y air filter	1	RF-1048
H washer; 1/4" id split lock	2	08198	Q nut, 6mm nylock	3	07553			
I washer; 1/4" id x 5/16" od, flat	8	08275	R bolt; m8-1.25 x 16mm, hexhead	1	07844			

**NOTE: FAILURE TO FOLLOW INSTALLATION INSTRUCTIONS AND NOT USING THE PROVIDED HARDWARE MAY DAMAGE THE INTAKE TUBE, THROTTLE BODY AND ENGINE.**

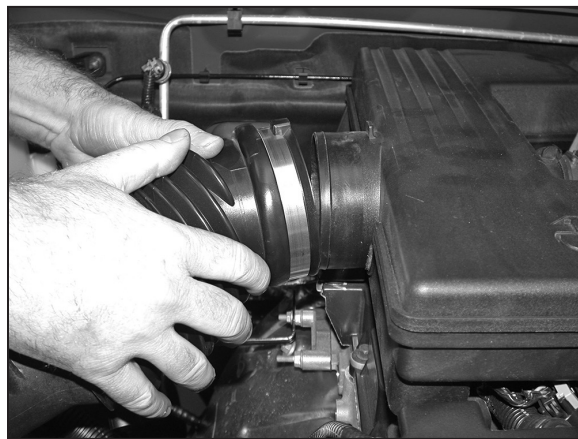
### TO START:

1. Turn off the ignition and disconnect the negative battery cable.

**NOTE: Disconnecting the negative battery cable erases pre-programmed electronic memories. Write down all memory settings before disconnecting the negative battery cable. Some radios will require an anti-theft code to be entered after the battery is reconnected. The anti-theft code is typically supplied with your owner's manual. In the event your vehicles' anti-theft code cannot be recovered, contact an authorized dealership to obtain your vehicles anti-theft code.**



2. Depress the locking clip on the mass air sensor electrical connection, and then separate the mass air sensor electrical connection.



3. Loosen the hose clamp that retains the stock intake tube to the resonator, and then remove the tube from the resonator as shown.



4. Loosen the two air box retaining bolts and one retaining nut.



5. Lift up the air box and remove it from the vehicle. **NOTE: K&N recommends that customers do not discard factory air intake.**



6. Loosen the two bolts that retain the intake resonator to the engine, and then loosen the hose clamp at the throttle body.

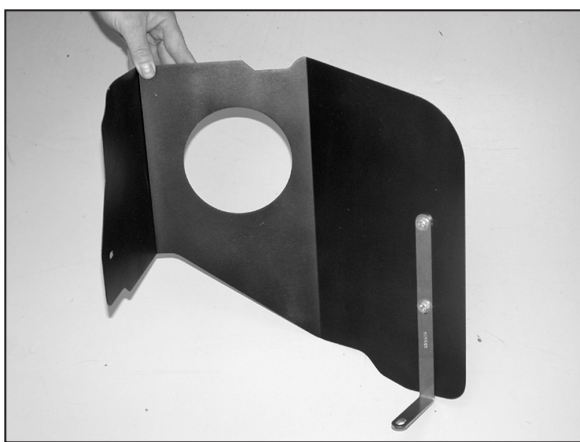


7. Remove the intake resonator from the engine as shown.

**NOTE: Disconnect the crankcase vent hose from the valve cover while removing the resonator from the engine.**



8. Install the silicone hose (08051) onto the throttle body and secure with the provided hose clamps as shown.



9. Install the "L" bracket (010060) onto the heat shield with the provided hardware as shown.

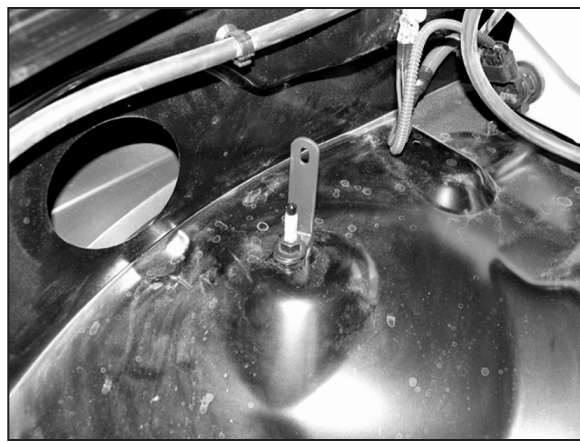


10. Install the edge trim onto the heat shield as shown.

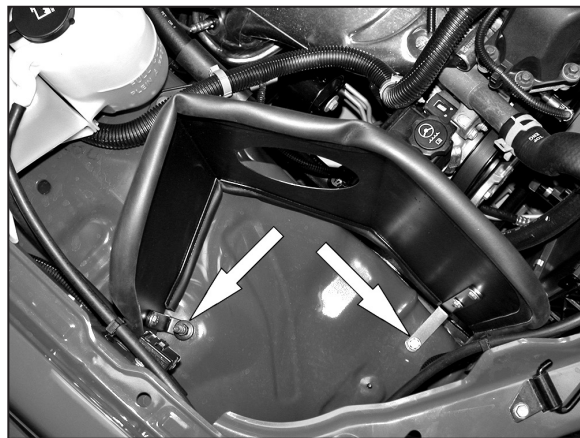
**NOTE: Start the 26" edge trim at the heat shield mounting bracket on the bottom of the heat shield. Some trimming may be necessary.**



11. Install the edge trim onto the inner hole on the heat shield as shown. Trim if needed.

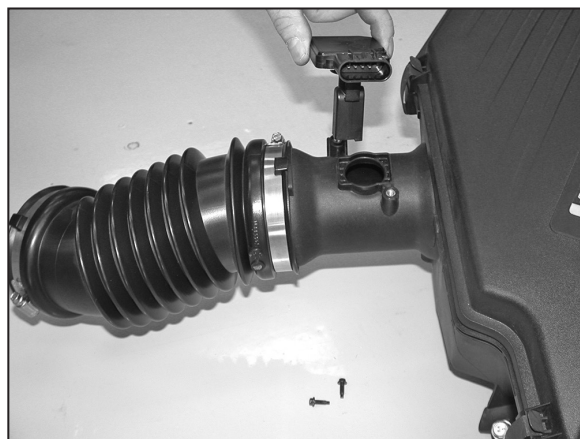


12. Install the "L" bracket (070602) onto the stock air box-mounting stud using the factory air box-retaining nut.



13. Install the heat shield into the vehicle using the hardware provided and the factory air box retaining nut.

**NOTE: The front heat shield bracket will be secured to the front air box retaining bolt location.**



14. Remove the mass air sensor from the stock air box as shown.



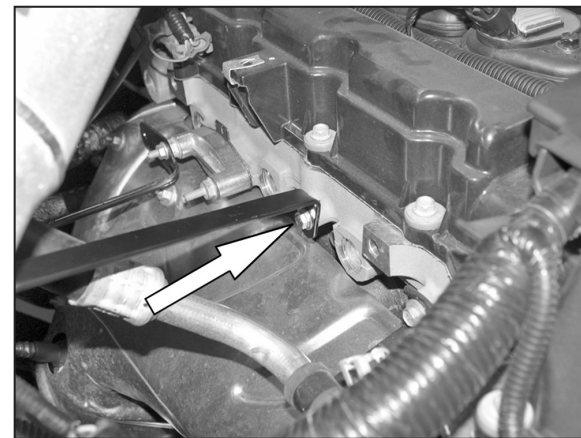
15. Install the mass air sensor into the K&N intake tube using the factory bolts as shown.



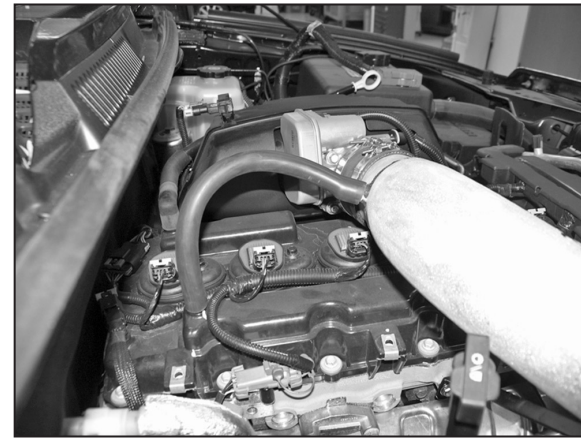
16. Install the small end of the tube-mounting bracket on the K&N intake tube as shown.  
**NOTE: Do not completely tighten at this time.**



17. Install the K&N intake tube into the silicone hose at the throttle body and through the heat shield, secure with the provided hose clamp.



18. Attach the tube-mounting bracket to the engine using the provided hardware as shown.



19. Install the provided crankcase vent hose onto the valve cover, then onto the K&N intake tube as shown.



20. Install the filter adapter into the air filter and secure with the provided hose clamp.

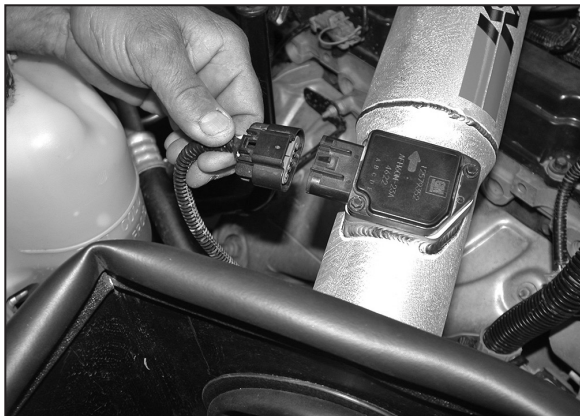
**NOTE: Drycharger air filter wrap; part # RF-1048DK is available to purchase separately. To learn more about Drycharger filter wraps or look up color availability please visit <http://www.knfilters.com>.**



21. Install the silicone hose (08724) onto the air filter assembly as shown.



22. Install the air filter assembly onto the K&N® intake tube and secure with the provided hose clamp.



23. Reconnect the Mass Air sensor electrical connection.



24. Reconnect the vehicle's negative battery cable. Double check to make sure everything is tight and properly positioned before starting the vehicle.

25. The C.A.R.B. exemption sticker, (attached), must be visible under the hood so that an emissions inspector can see it when the vehicle is required to be tested for emissions. California requires testing every two years, other states may vary.

26. It will be necessary for all K&N® high flow intake systems to be checked periodically for realignment, clearance and tightening of all connections. Failure to follow the above instructions or proper maintenance may void warranty.

#### ROAD TESTING:

1. Start the engine with the transmission in neutral or park, and the parking brake engaged. Listen for air leaks or odd noises. For air leaks secure hoses and connections. For odd noises, find cause and repair before proceeding. This kit will function identically to the factory system except for being louder and much more responsive.

2. Test drive the vehicle. Listen for odd noises or rattles and fix as necessary.

3. If road test is fine, you can now enjoy the added power and performance from your kit.

4. K&N Engineering, Inc., requires cleaning the intake system's air filter element every 100,000 miles. When used in dusty or off-road environments, our filters will require cleaning more often. We recommend that you visually inspect your filter once every 25,000 miles to determine if the screen is still visible. When the screen is no longer visible some place on the filter element, it is time to clean it. To clean and re-oil, purchase our filter Recharger® service kit, part number 99-5050 or 99-5000 and follow the easy instructions.

**INTAKE SYSTEMS FOR VEHICLES LISTED ARE 50 STATE LEGAL. SEE KNFILTERS.COM FOR CARB STATUS ON EACH PART FOR A SPECIFIC VEHICLE.**