

TYPHOON INTAKE SYSTEMS®

BY 

INSTALLATION INSTRUCTIONS

69-8002

Subaru

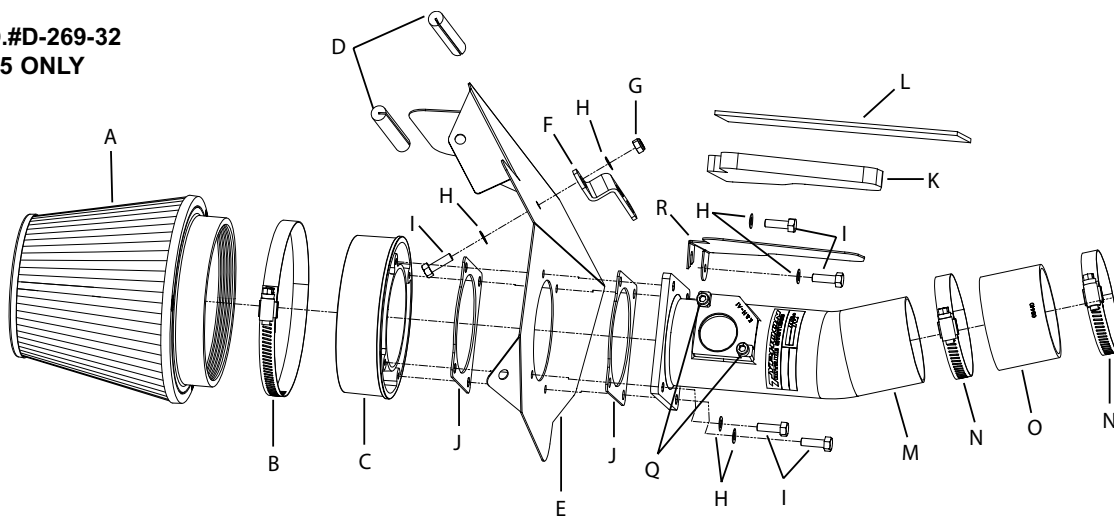
2004-06 Forester XT

H4-2.5L Turbo

NOTE: C.A.R.B. E.O.#D-269-32
APPLIES TO 2004-05 ONLY

Tools

Flat Blade
Screwdriver
Phillips Screwdriver
Pliers
Ratchet
8" extension
10mm socket
12mm socket



Parts list

Description	Qty.	P/N
A FILTERCHARGER	1	RP-5113
B HOSE CLAMP #80	1	08694
C ADAPTOR; #350	1	21510
D EDGE TRIM; 1/16" GAP, 7"L	1	102452
E HEAT SHIELD; 69-8002	1	07331
F BRACKET; "Z" 69-8002	1	010071
G NUT; 6MM NYLOCK	1	07512
H WASHER; 6MM WAVE	6	08277
I BOLT; M6 X 20MM, HEX, SS	5	07795
J GASKET; 63-1034; 1/16" NEOPRENE	2	09202
K INS/MAT; 8"X6"L, HEAT INSULATION	1	10068
L TAPE; 2-1/2"W X 18"L, AL, HI-TEMP	1	18312
M TYPHOON INTAKE TUBE	1	27171
N HOSE CLAMP; #44	2	08560
O HOSE; 2-3/4"ID X 2"L, BLACK	1	08440
Q BOLT; M4 X 8MM, C/H/A	2	07733
R HEAT DEFLECTOR PLATE, BLACK	1	03467

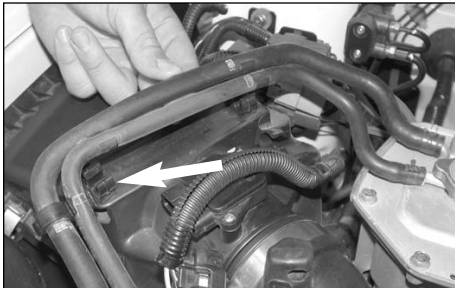
NOTE: FAILURE TO FOLLOW INSTALLATION INSTRUCTIONS AND NOT USING THE PROVIDED HARDWARE MAY DAMAGE THE INTAKE TUBE, THROTTLE BODY AND ENGINE.

TO START:

1. Turn the ignition OFF and disconnect the vehicle's negative battery cable.



2. Disconnect the mass air sensor electrical connection as shown.



3. Unclip the coolant lines from the top of the air cleaner as shown.



4. Loosen and remove the two bolts on the air cleaner as shown.



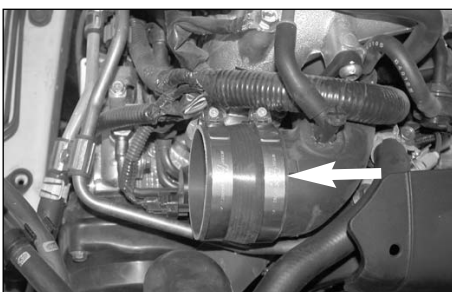
5. Loosen the hose clamp on the turbo charger inlet tube as shown.



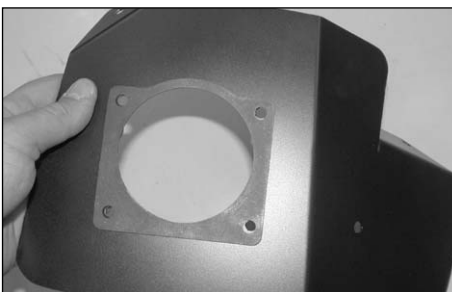
6. Remove the complete air cleaner assembly as shown.



7. Remove the mass air sensor from the air cleaner as shown.



8. Install the silicone hose and hose clamps onto the turbo charger inlet tube as shown.



9. Install one of the provided gaskets onto the back of the heat shield as shown.



10. Assemble the tube, heat shield, filter adapter, and the remaining gasket using two of the provided hex bolts as shown above.

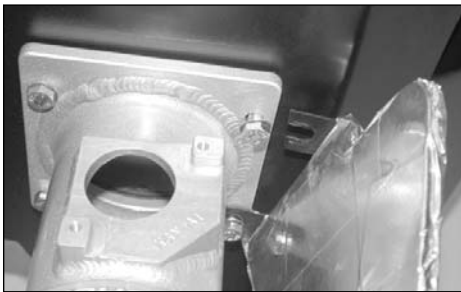
NOTE: Before the assembly process, inspect the inside of the tube for any debris, then clean the inside out with water and a towel. Inspect the tube one more time before proceeding to the next step.



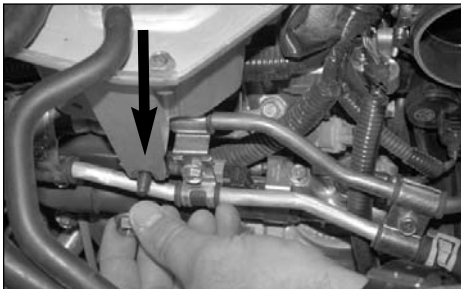
11. Place the heat deflector plate onto the provided heat insulation material and mark as shown.



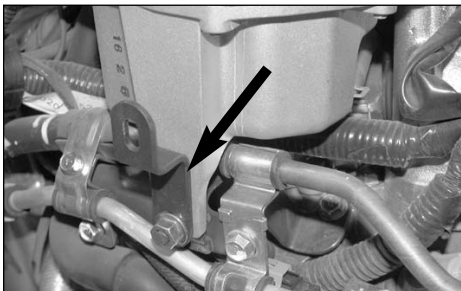
12. Cut the heat insulation material and tape it to the provided heat deflector plate using the provide Hi-Temp tape as shown.



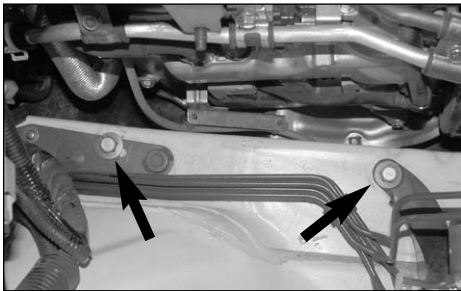
13. Using the remaining hex bolts install the heat deflector plate onto the intake tube flange as shown.



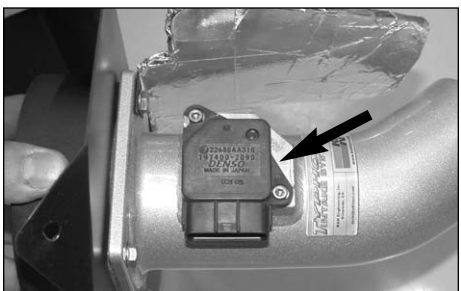
14. Remove the stock nut from the coolant reservoir as shown.



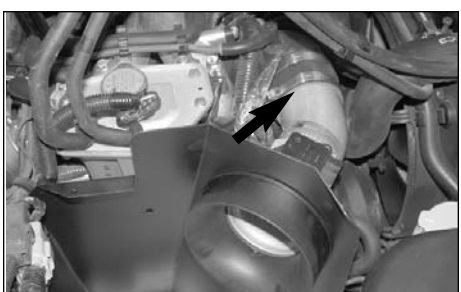
15. Install the provided "Z" bracket onto the coolant reservoir using the original nut removed in step 14.



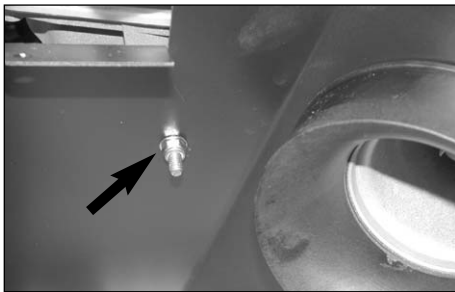
16. Reinstall the original air cleaner mounting bolts as shown above.



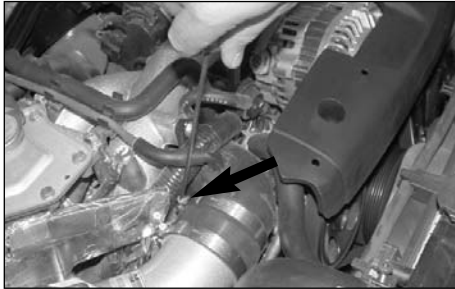
17. Install the mass air sensor into the K&N intake tube using the provided screws as shown above.



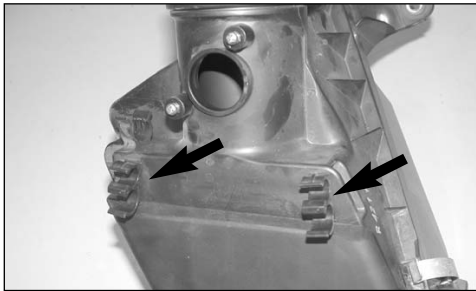
18. Install the complete air cleaner assembly into the vehicle and slide the intake tube into the silicone hose as shown above.



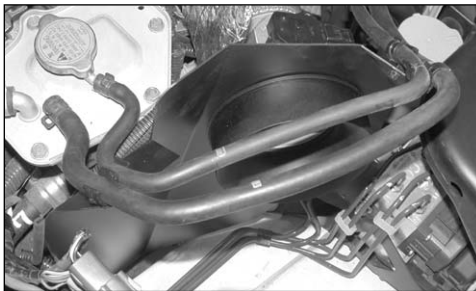
19. Secure the heat shield to the "Z" bracket using the provided hardware as shown.



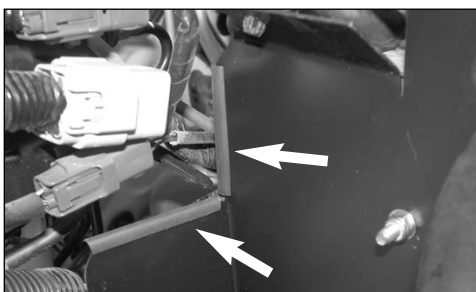
20. Tighten the hose clamp on the K&N intake tube as shown.



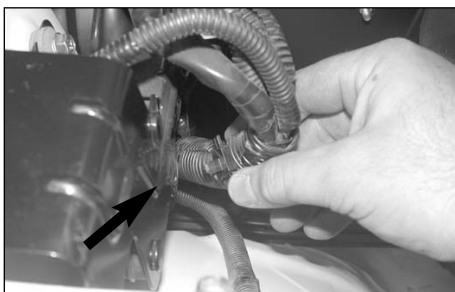
21. Remove the stock coolant clips from the stock air cleaner assembly as shown.



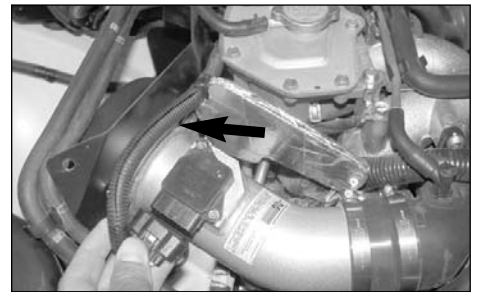
22. Install the stock coolant clips onto the two tabs on the heat shield, then clip the coolant lines onto the clips as shown.



23. Cut the provided edge trim to size and place onto the heat shield as shown.



24. Unclip the wire harness from the inner fender bracket as some slack will be needed to reroute the mass air sensor electrical connection.



25. Reroute the mass air sensor electrical connection behind the heat shield and between the heat deflector plate and reconnect as shown.



26. Install the K&N Filtercharger and secure using the provided hose clamp as shown.



27. Re-connect the negative battery cable and double check that everything is tight and properly positioned before starting the vehicle.

28. The C.A.R.B. exemption sticker, (attached), must be visible under the hood, so that an emissions inspector can see it when the vehicle is required to be tested for emissions. California requires testing every two years, other states may vary.

28. It will be necessary for all Typhoons to be checked periodically for realignment, clearance and tightening of all connections. Failure to follow the above instructions or proper maintenance may void warranty.

ROAD TESTING:

1. Start the engine with the transmission in neutral or park, and the parking brake engaged. Listen for air leaks or odd noises. For air leaks secure hoses and connections. For odd noises, find cause and repair before proceeding. This kit will function identically to the factory system except for being louder and much more responsive.

2. Test drive the vehicle. Listen for odd noises or rattles and fix as necessary.

3. If road test is fine, you can now enjoy the added power and performance from your kit.

4. K&N suggests checking the Filtercharger element periodically for excessive dirt build-up. When the element becomes covered in dirt (or once a year), service it according to the instructions on the Recharger service kit, part number 99-5000 or 99-5050.

FREE K&N DECAL To register your warranty, please see us online at knfilters.com/register. FREE K&N DECAL