



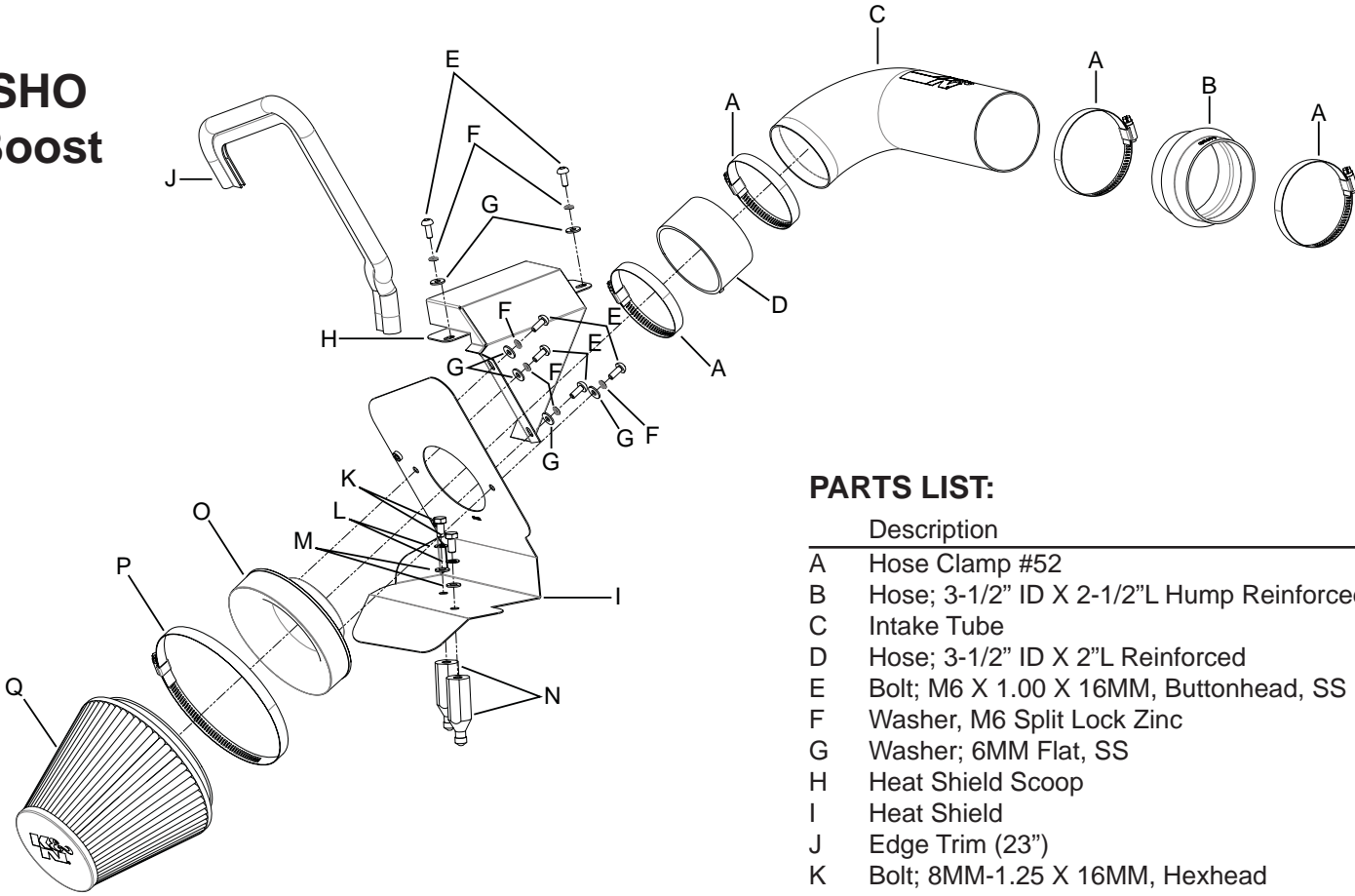
TYPHOON INTAKE SYSTEMS



INSTALLATION INSTRUCTIONS

69-3531
FORD
2011 Taurus SHO
V6-3.5L EcoBoost

- TOOLS NEEDED:**
 Flat Blade Screwdriver
 Ratchet
 Extension
 8mm Socket
 4mm Allen Wrench
 13mm Wrench
 7/8" Wrench



PARTS LIST:

Description	Qty.	Part #
A Hose Clamp #52	4	08610
B Hose; 3-1/2" ID X 2-1/2"L Hump Reinforced	1	08699
C Intake Tube	1	27495TS
D Hose; 3-1/2" ID X 2"L Reinforced	1	08698
E Bolt; M6 X 1.00 X 16MM, Buttonhead, SS	6	07730
F Washer, M6 Split Lock Zinc	6	1-3025
G Washer; 6MM Flat, SS	6	08269
H Heat Shield Scoop	1	074083
I Heat Shield	1	074082
J Edge Trim (23")	1	102495
K Bolt; 8MM-1.25 X 16MM, Hexhead	2	07844
L Washer; 8MM Spring (Wave)	2	08239
M Washer; 8MM, Flat, SS	2	08272
N Standoff; 6.0 Ford Airbox	2	06532
O Adapter; Universal, 6" Filter 3.5" Coupler	1	21512-1
P Hose Clamp #104	1	08697
Q Air Filter	1	RF-1048

NOTE: FAILURE TO FOLLOW INSTALLATION INSTRUCTIONS AND NOT USING THE PROVIDED HARDWARE MAY DAMAGE THE INTAKE TUBE, THROTTLE BODY AND ENGINE.

TO START:

1. Turn off the ignition and disconnect the negative battery cable.

NOTE: Disconnecting the negative battery cable erases pre-programmed electronic memories. Write down all memory settings before disconnecting the negative battery cable. Some radios will require an anti-theft code to be entered after the battery is reconnected. The anti-theft code is typically supplied with your owner's manual. In the event your vehicles' anti-theft code cannot be recovered, contact an authorized dealership to obtain your vehicles anti-theft code.



2. Loosen the hose clamp shown that secures the factory intake tube.



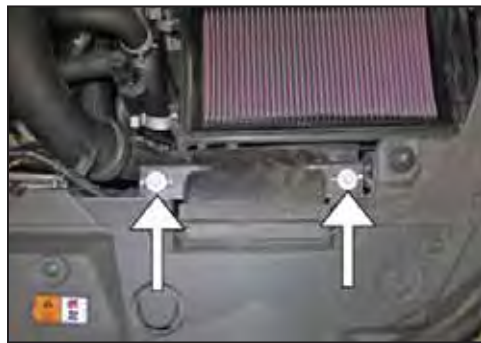
3. Disconnect the inlet air temperature sensor electrical connection and unhook the wiring harness from the upper airbox.



4. Release the two upper airbox retaining clips.



5. Remove the upper airbox/intake tube assembly from the vehicle.

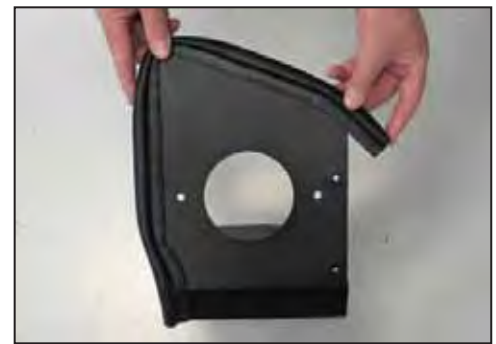


6. Remove the two bolts shown that secure the fresh air duct.



7. Lift up the airbox and remove it from the vehicle.

NOTE: K&N Engineering, Inc., recommends that customers do not discard factory air intake.



8. Install the provided edge trim onto the heat shield as shown.

NOTE: Some trimming of the edge trim will be necessary.



9. Install the filter adapter into the heat shield as shown and secure with the provided hardware.



10. Install the provided silicone hose (08698) onto the filter adapter and secure with the provided hose clamp.



11. Install the two provided mounting studs onto the heat shield and secure with the provided hardware.



12. Install the K&N® air filter onto the filter adapter and secure with the provided hose clamp.



13. Install the heat shield/filter assembly into the vehicle so the mounting studs insert into the airbox mounting grommets.



14. Install the provided fresh air scoop onto the core support and then secure the scoop to the core support and heat shield with the provided hardware.



15. Install the provided silicone hump hose (08699) onto the factory inlet tube as shown and secure with the provided hose clamp.



16. Release the locking tab on the inlet air temperature sensor and rotate counter clockwise to remove it from the factory airbox.



17. Install the inlet air temperature sensor into the K&N® intake tube and rotate it clockwise so it locks into position.



18. Install the K&N® intake tube into the silicone hump hose and then into the filter adapter's silicone hose. Secure the intake tube with the provided hose clamps.



19. Reconnect the inlet air temperature sensor electrical connection.



20. Reconnect the vehicle's negative battery cable. Double check to make sure everything is tight and properly positioned before starting the vehicle.

21. It will be necessary for all K&N® high flow intake systems to be checked periodically for realignment, clearance and tightening of all connections. Failure to follow the above instructions or proper maintenance may void warranty.

ROAD TESTING:

1. Start the engine with the transmission in neutral or park, and the parking brake engaged. Listen for air leaks or odd noises. For air leaks secure hoses and connections. For odd noises, find cause and repair before proceeding. This kit will function identically to the factory system except for being louder and much more responsive.
2. Test drive the vehicle. Listen for odd noises or rattles and fix as necessary.
3. If road test is fine, you can now enjoy the added power and performance from your kit.

4. K&N Engineering, Inc., suggests checking the air filter element periodically for excessive dirt build-up. When the element becomes covered in dirt (or once a year), service it according to the instructions on the Recharger® service kit, part number 99-5050 or 99-5000.

STREET LEGAL IN MOST STATES

**NOT LEGAL FOR USE IN CA & OTHER STATES
ADOPTING CA EMISSIONS STANDARDS**

See our catalog or knfilters.com for CARB status on each part for a specific vehicle

* FREE K&N® decal To register your warranty, please see us online at knfilters.com/register. FREE K&N® decal *

• 1455 CITRUS ST., P.O. BOX 1329, RIVERSIDE, CA., U.S.A. 92502 • TECH SERVICE 800-858-3333 • FAX 951-826-4001
• e-mail: tech@knfilters.com • WWW: <http://www.knfilters.com>