

# TYPHOON INTAKE SYSTEMS®

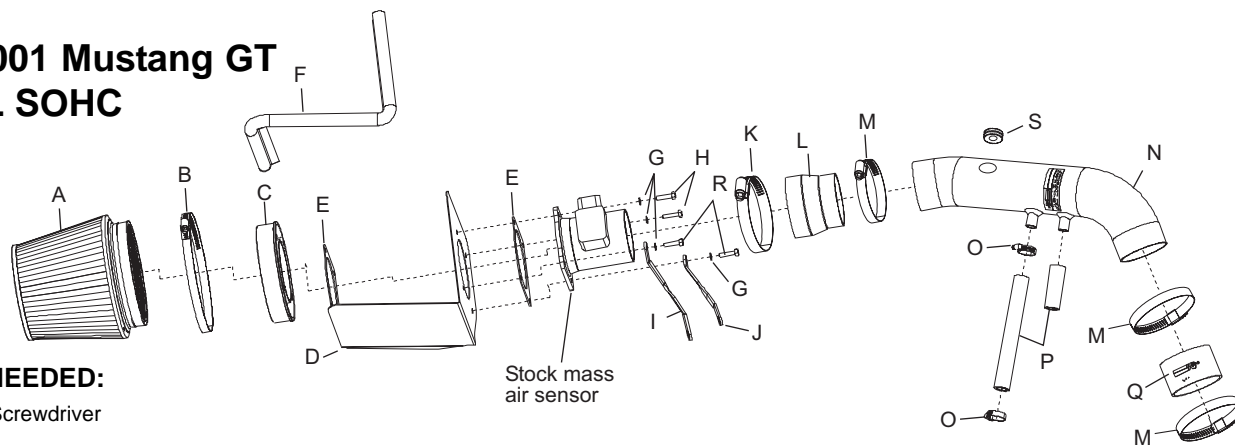
BY 

## INSTALLATION INSTRUCTIONS

69-3524

Ford

1996-2001 Mustang GT  
V8-4.6L SOHC



### TOOLS NEEDED:

Flat Blade Screwdriver  
Ratchet  
8mm socket  
10mm socket

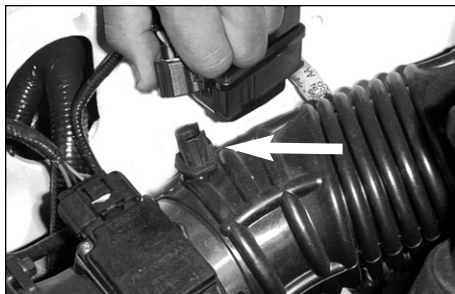
### PARTS LIST:

Description	Qty.	P/N
A FILTERCHARGER	1	RF-1036
B HOSE CLAMP #104	1	08697
C ADAPTER; #250	1	08785
D HEAT SHIELD; 57-2519	1	07411
E GASKET; 1/16" NEOPRENE	2	09984
F EDGE TRIM; TOP LOC, 23"L	1	102495
G WASHER; 6MM WAVE, SS	4	08277
H BOLT; M6 X 1 X 20MM, SS HEX	2	07795
I BRACKET; 57-2519 SHORT	1	070762
J BRACKET; 57-2519 TWIST	1	070752
K HOSE CLAMP #60 STAINLESS	1	08628
L HOSE; 3"ID X 3-1/2"ID STEP, BLACK	1	084055
M HOSE CLAMP #44 STAINLESS	3	08560
N TYPHOON INTAKE TUBE	1	27397
O HOSE CLAMP; #10	2	08411
P HOSE; 5/8"ID X 9-3/4"L, SILICONE	1	084047
Q HOSE; 3"ID X 2"L, BLACK	1	08434
R BOLT; M6 X 1 X 25MM, SS HEX	2	07858
S GROMMET; 1-1/16OD, 1/2ID, 3/8 THK	1	080544

Prior to the installation process, please inspect the contents of this package to ensure that all parts are included in this kit. Please see parts list for description and quantities.

### TO START:

1. Turn the ignition OFF and disconnect the vehicle's negative battery cable.



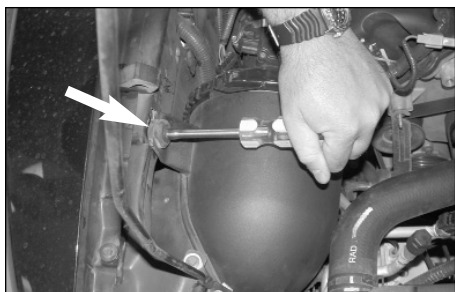
2. Disconnect the air temp sensor electrical connection.



3. Disconnect the mass air sensor electrical connection.



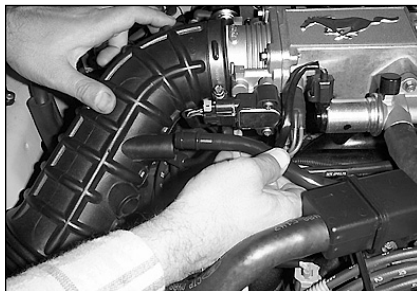
4. Loosen the hose clamp on the intake tube at the throttle body.



5. Loosen and remove the bolt that retains the air cleaner.



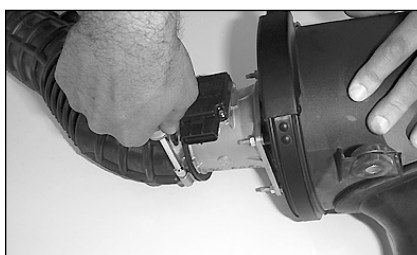
6. Detach the IAC line from the intake tube.



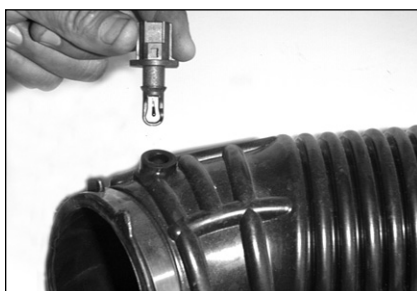
7. Detach the PCV line from the intake tube.



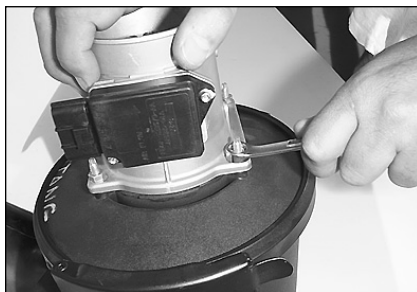
8. Remove the entire air intake assembly.



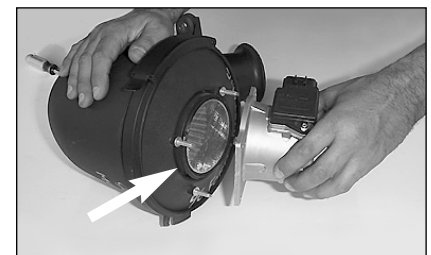
9. Loosen the hose clamp and detach the intake tube from the mass air sensor.



10. Remove the air temp. sensor from stock intake tube as shown.

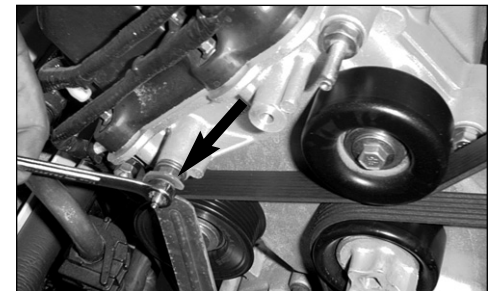


11. Loosen and remove the 4 nuts that retain the mass air sensor.  
**NOTE:** It may be necessary to use a pair of vise grips to hold the studs while loosening the nuts.

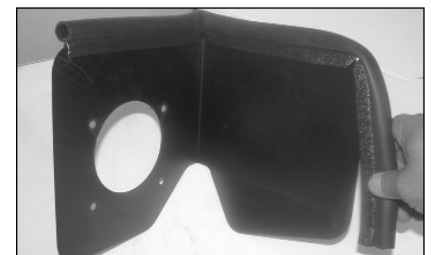


12. Remove the mass air sensor from the air cleaner.

**NOTE:** The screen will not be reused.



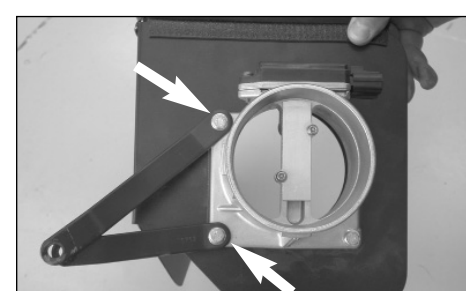
13. Loosen and remove the nut from the protruding stud on the engine. **NOTE:** not all vehicles are equipped with a nut.



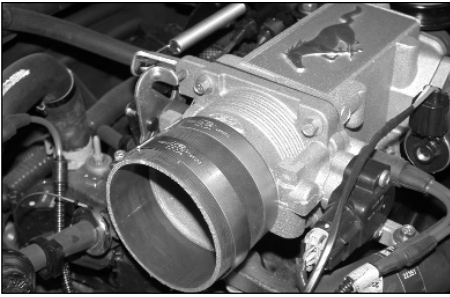
14. Install the trim seal onto the heat shield.  
**NOTE:** some cutting and trimming will be necessary to achieve best fit.



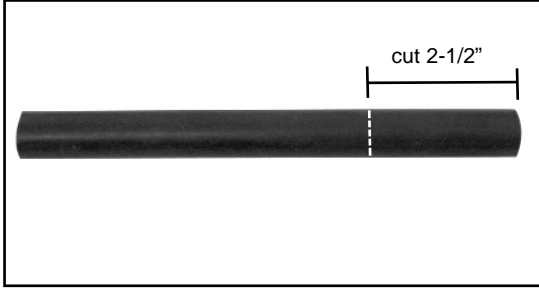
15. Assemble the mass air sensor, heat shield and adapter, using the gaskets and hardware as shown, but do not tighten completely at this time.  
**NOTE:** do not install the hex bolts on the opposite side of flange. See next step.



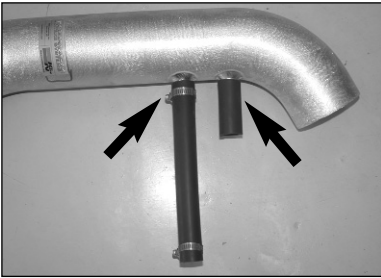
16. Attach the brackets to the mass air sensor flange as shown.



17. Install the provided silicone hose and hose clamps onto the throttle body as shown.

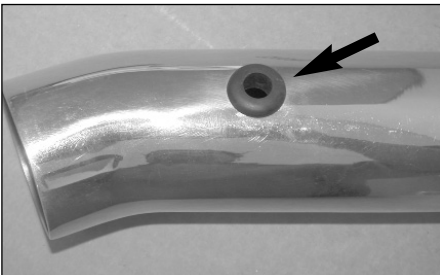


18. Mark and cut 2-1/2" from the provided silicone hose as shown.

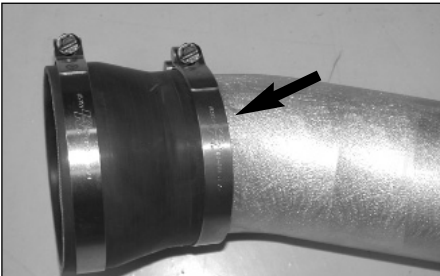


19. Install the provided hoses from the previous step onto the K&N intake tube and secure with the provided hose clamps as shown.

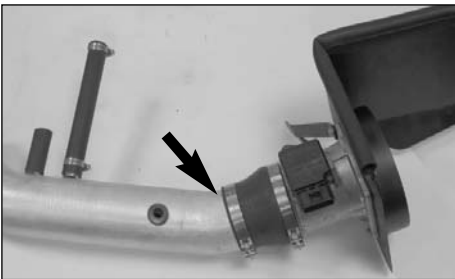
**NOTE:** Before installing the silicone hoses, inspect the inside of the tube for any debris, then clean the inside out with water and a towel. Inspect the tube one more time before proceeding to the next step.



20. Install the provided grommet into the K&N intake tube as shown.



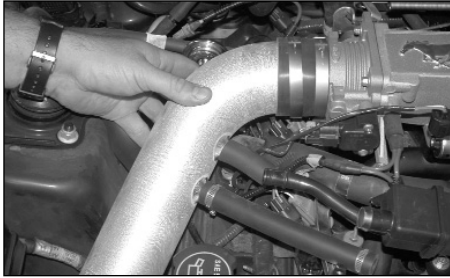
21. Install the provided silicone step hose and hose clamps onto the K&N intake tube as shown.



22. Install the K&N intake tube onto the mass air sensor and snug the hose clamps, but do not tighten completely at this time.



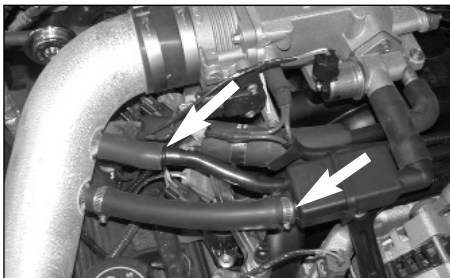
23. Install the K&N Filtercharger onto the filter adapter and secure with the provided hose clamp as shown.



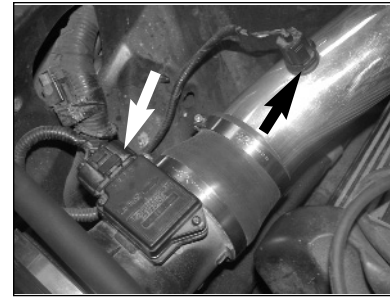
24. Install the complete K&N intake assembly into the vehicle and slide the tube into the silicone hose on the throttle body as shown.



25. Slide the brackets onto the stud from step 13 and secure with the factory nut.



26. Reconnect the vent hoses to the K&N intake tube as shown and tighten hose clamps.



27. Reconnect mass air sensor electrical connection and insert the air temp sensor into the grommet as shown.



28. Reconnect negative battery cable and double check to make sure everything is tightened and properly positioned before starting the vehicle.

29. It will be necessary for all Typhoon intake systems to be checked periodically for realignment, clearance and tightening of all connections. Failure to follow the above instructions or proper maintenance may void warranty.

#### ROAD TESTING:

1. Start the engine with the transmission in neutral or park, and the parking brake engaged. Listen for air leaks or odd noises. For air leaks secure hoses and connections. For odd noises, find cause and repair before proceeding. This kit will function identically to the factory system except for being louder and much more responsive.
2. Test drive the vehicle. Listen for odd noises or rattles and fix as necessary.
3. If road test is fine, you can now enjoy the added power and performance from your kit.
4. K&N suggests checking the Filtercharger element periodically for excessive dirt build-up. When the element becomes covered in dirt (or once a year), service it according to the instructions on the Recharger service kit that is included in this kit.

**\*FREE K&N DECAL To register your warranty, please see us online at [knfilters.com/register](http://knfilters.com/register). FREE K&N DECAL\***

