



TYPHOON INTAKE SYSTEMS



INSTALLATION INSTRUCTIONS

69-1210

ACURA / HONDA

2007-10 TL

2010-11 Accord Crosstour

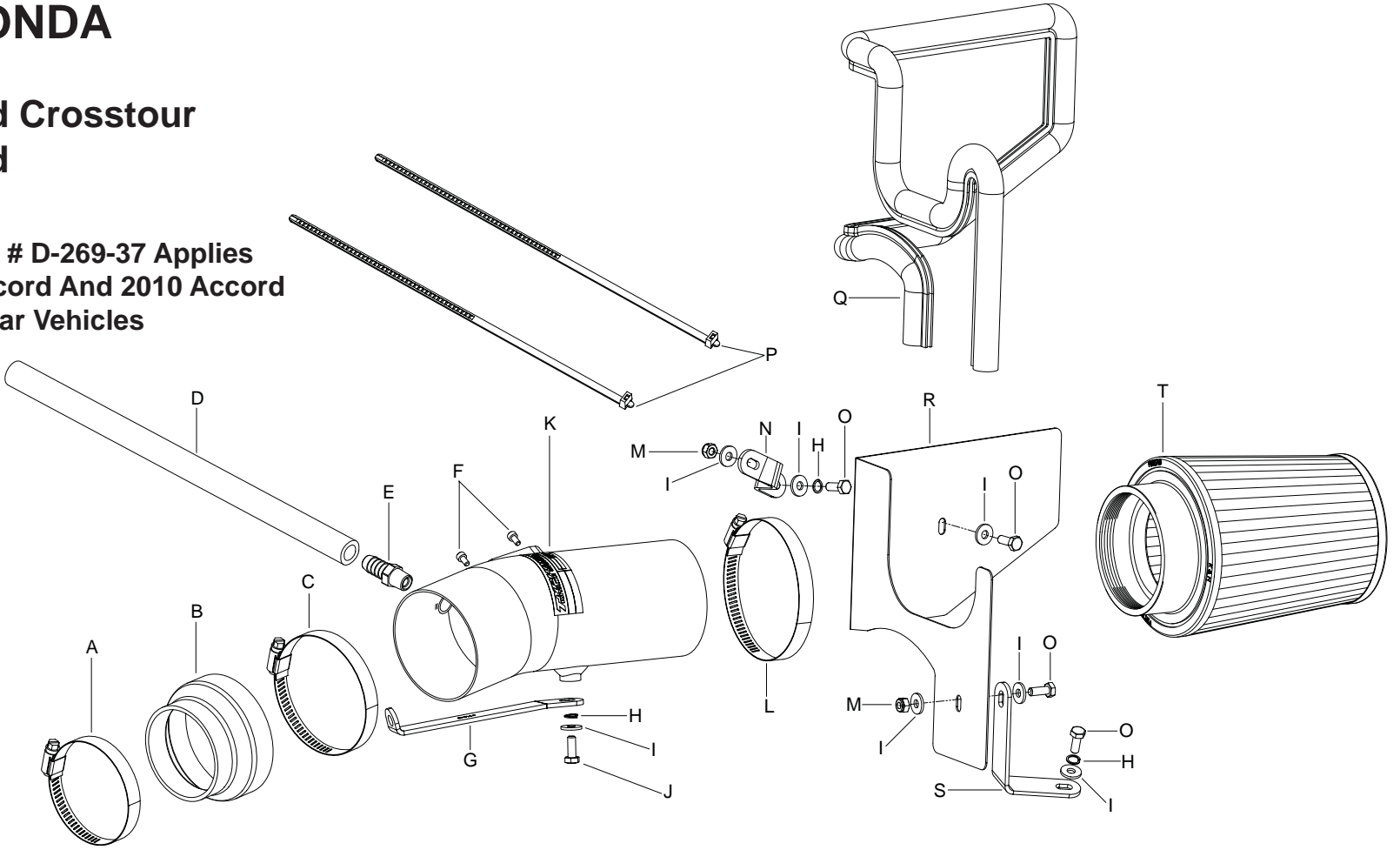
2008-11 Accord

V6-3.5L

NOTE: C.A.R.B E.O. # D-269-37 Applies Only To 2008-10 Accord And 2010 Accord Crosstour Model Year Vehicles

TOOLS NEEDED:

- 5/8" Wrench
- 3mm Allen Wrench
- 10mm Socket
- 10mm Wrench
- 12mm Wrench
- Extension
- Flat Blade Screwdriver
- Phillips Screwdriver
- Pliers
- Ratchet



PARTS LIST

Description	Qty.	Part #
A Hose Clamp #44	1	08560
B Hose; 3.5" TO 2.75" X 2"L,	1	084093
C Hose Clamp #52	1	08610
D Hose; 1/2"ID X 14"L,	1	08402
E Vent; Strt. 1/2" Hose, 1/4"NPT,	1	080022
F Bolt; M4 - 0.07 8mm, A/H CAP,	2	07733
G Bracket; "L", Stl., FB/PC	1	070114
H Washer; 1/4" Lock, ZN	3	08198
I Washer; 1/4"ID x 5/8"OD-SAE	7	08275
J Bolt; M6 X 1.00" x 20mm Hex,	1	07795
K Intake tube	1	27193
L Hose Clamp #60	1	08624
M Nut; 6mm Nylock, Hex Head,	2	07512
N Bracket; "Z", Stl., FB/PC	1	070116
O Bolt; 6mm-1.00 x 16mm,	4	07812
P Cable Ties; 11"	2	21590
Q Edge Trim (48")	1	102485
R Heat Shield	1	073101
S Bracket; "L", Stl., FB/PC	1	070115
T Air Filter	1	RC-4630

NOTE: FAILURE TO FOLLOW INSTALLATION INSTRUCTIONS AND NOT USING THE PROVIDED HARDWARE MAY DAMAGE THE INTAKE TUBE, THROTTLE BODY AND ENGINE.

TO START:



1. Turn off the ignition and disconnect the negative battery cable.

NOTE: Disconnecting the negative battery cable erases pre-programmed electronic memories. Write down all memory settings before disconnecting the negative battery cable. Some radios will require an anti-theft code to be entered after the battery is reconnected. The anti-theft code is typically supplied with your owner's manual. In the event your vehicles' anti-theft code cannot be recovered, contact an authorized dealership to obtain your vehicles anti-theft code.



2. Disconnect the positive battery cable, remove the battery hold down and then remove the battery.



3. Disconnect the mass air sensor electrical connection.



4. Disconnect the crankcase vent tube from the intake tube and valve cover port as shown. The spring clamps will not be reused.



5. Loosen the hose clamp which secures the stock intake tube to the throttle body.



6. Loosen the bolt which secures the lower airbox to the battery tray.



7. Remove the airbox assembly from the vehicle; be sure to unhook the wiring harness from the airbox as it is removed.

NOTE: K&N Engineering, Inc., recommends that customers do not discard factory air intake.



8. Remove the front lower throttle body bolt shown. **NOTE: This bolt will be reused in the next step.**



9. Install the tube mounting bracket (070114) onto the throttle body and secure with the bolt removed in the previous step.



10. Remove the airbox mounting bracket bolt shown.



11. Install the heat shield mounting bracket (070116) onto the airbox mounting bracket and secure with the provided hardware.



12. Install the heat shield mounting bracket (070115) onto the airbox mounting location on the battery tray using the provided hardware.



13. Install the provided edge trim onto the heat shield as shown.

NOTE: Some trimming of the edge trim will be necessary.



14. Install the heat shield assembly into the vehicle and secure to the mounting brackets with the hardware provided.



15. Install the silicone hose (084093) onto the throttle body and secure with the provided hose clamp.



16. Install the 1/4" NPT fitting into the K&N® intake tube as shown.



17. Remove the mass air sensor from the stock airbox.



18. Install the mass air sensor into the K&N® intake tube and secure with the provided hardware.



19. Install the K&N® intake tube into the silicone hose at the throttle body and align with the mounting bracket. Secure with the hose clamp and provided hardware.



20. Install the provided crankcase vent hose onto the NPT fitting and then onto the valve cover port. Secure the crankcase hard line to the provided hose with the tie wraps provided.



21. Install the K&N® air filter onto the intake tube and secure with the provided hose clamp.



22. Reinstall the battery and secure with the hold down bracket. Reconnect the positive battery cable.



23. Reconnect the mass air sensor electrical connection.



24. Reconnect the vehicle's negative battery cable. Double check to make sure everything is tight and properly positioned before starting the vehicle.

25. The C.A.R.B. exemption sticker, (attached), must be visible under the hood so that an emissions inspector can see it when the vehicle is required to be tested for emissions. California requires testing every two years, other states may vary.

26. It will be necessary for all K&N® high flow intake systems to be checked periodically for realignment, clearance and tightening of all connections. Failure to follow the above instructions or proper maintenance may void warranty.

ROAD TESTING:

1. Start the engine with the transmission in neutral or park, and the parking brake engaged. Listen for air leaks or odd noises. For air leaks secure hoses and connections. For odd noises, find cause and repair before proceeding. This kit will function identically to the factory system except for being louder and much more responsive.
2. Test drive the vehicle. Listen for odd noises or rattles and fix as necessary.
3. If road test is fine, you can now enjoy the added power and performance from your kit.
4. K&N Engineering, Inc., suggests checking the air filter element periodically for excessive dirt build-up. When the element becomes covered in dirt (or once a year), service it according to the instructions on the Recharger® service kit, part number 99-5050 or 99-5000

STREET LEGAL IN MOST STATES

**NOT LEGAL FOR USE IN CA & OTHER STATES
ADOPTING CA EMISSIONS STANDARDS**

See our catalog or knfilters.com for CARB status on each part for a specific vehicle

* FREE K&N® decal To register your warranty, please see us online at knfilters.com/register. FREE K&N® decal *

• 1455 CITRUS ST., P.O. BOX 1329, RIVERSIDE, CA., U.S.A. 92502 • TECH SERVICE 800-858-3333 • FAX 951-826-4001
• e-mail: tech@knfilters.com • WWW: <http://www.knfilters.com>