

# TYPHOON INTAKE SYSTEMS

BY 

**Warning:** The K&N Drycharger included with this kit must be installed on the K&N air filter when used with a K&N Typhoon Cold Air Intake System. The K&N Typhoon Intake System is a performance product that can be used safely during mild weather conditions. During harsh and inclement weather conditions, you must convert your Cold Air Intake System to a short ram configuration, or return your vehicle to the stock OEM airbox and intake tract configuration. Failure to follow these instructions can void your warranty.

## INSTALLATION INSTRUCTIONS

### 69-1206

#### Honda

#### 2003-06 Accord

#### L4-2.4L

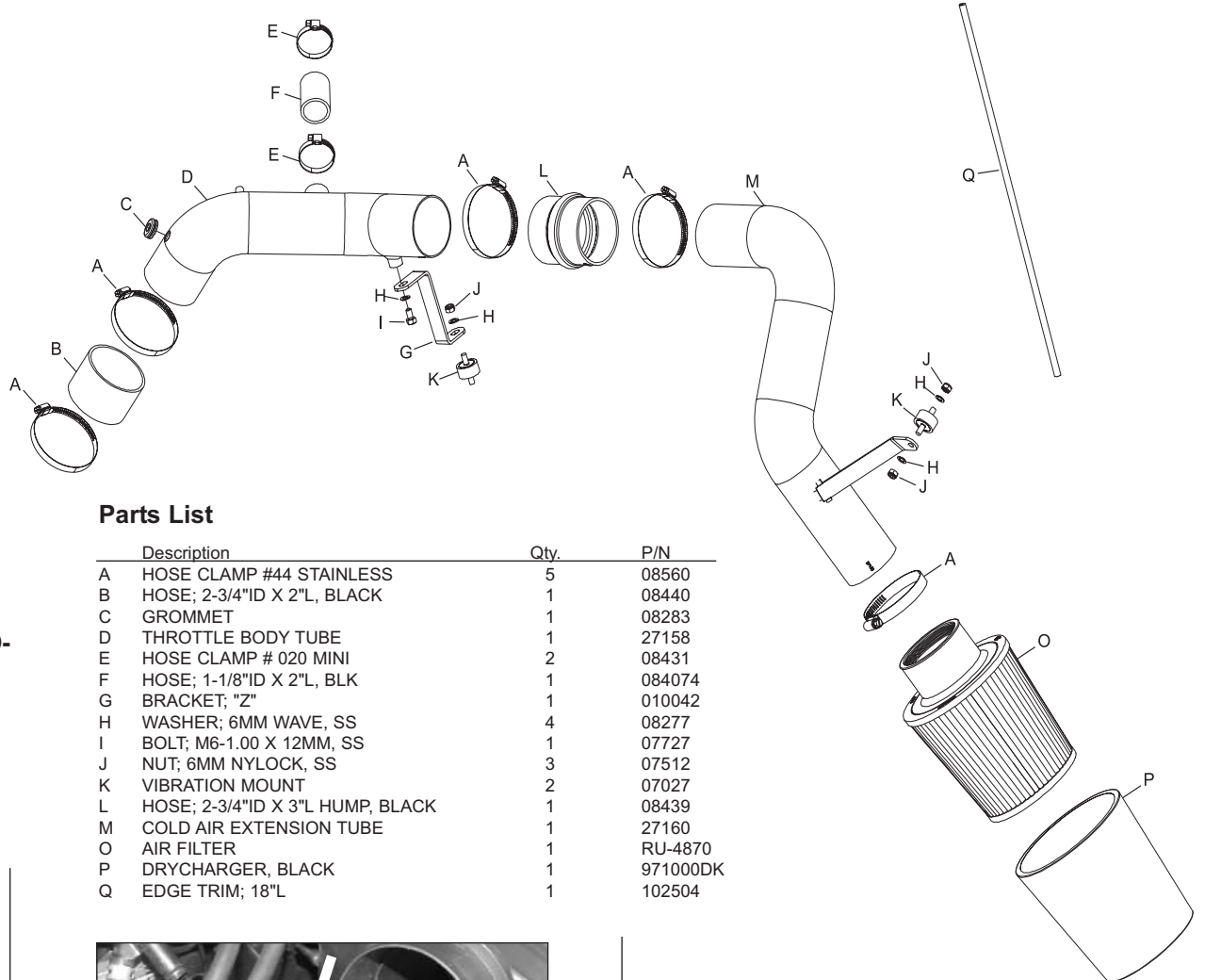
NOTE: E.O. #D269-32  
APPLIES TO 2003-04

NOTE: Excluding 2003 & 2006 LEV2  
SULEV engine families 3HNXV0KCP &  
4HNXV024KCV

#### TOOLS NEEDED:

Flat Blade Screwdriver  
Phillips Screwdriver  
Pliers  
Ratchet  
Extension  
10mm Socket

NOTE: FAILURE TO FOLLOW INSTALLATION  
INSTRUCTIONS AND NOT USING THE PROVID-  
ED HARDWARE MAY DAMAGE THE INTAKE  
TUBE, THROTTLE BODY AND ENGINE.

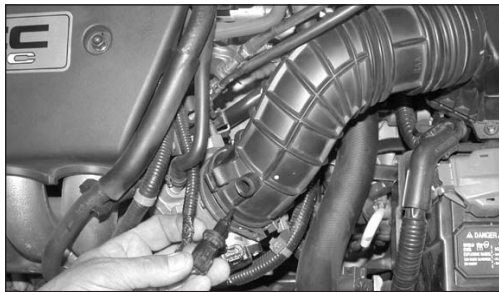


#### Parts List

Description	Qty.	P/N
A HOSE CLAMP #44 STAINLESS	5	08560
B HOSE; 2-3/4"ID X 2"L, BLACK	1	08440
C GROMMET	1	08283
D THROTTLE BODY TUBE	1	27158
E HOSE CLAMP # 020 MINI	2	08431
F HOSE; 1-1/8"ID X 2"L, BLK	1	084074
G BRACKET; "Z"	1	010042
H WASHER; 6MM WAVE, SS	4	08277
I BOLT; M6-1.00 X 12MM, SS	1	07727
J NUT; 6MM NYLOCK, SS	3	07512
K VIBRATION MOUNT	2	07027
L HOSE; 2-3/4"ID X 3"L HUMP, BLACK	1	08439
M COLD AIR EXTENSION TUBE	1	27160
O AIR FILTER	1	RU-4870
P DRYCHARGER, BLACK	1	971000DK
Q EDGE TRIM; 18"L	1	102504

#### TO START:

1. Turn the ignition OFF and disconnect the vehicle's negative battery cable.



2. Remove the air temperature sensor from the stock intake tube as shown.



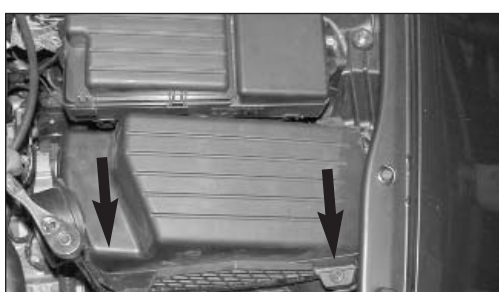
3. Disconnect the vent from the stock intake tube as shown.



4. Disconnect the crank case vent hose from the stock intake tube as shown..



5. Loosen the hose clamp at the throttle body and remove the stock intake tube as shown.



6. Loosen the two air cleaner bolts as shown.



7. Unclip the wire harness from the bottom of the air cleaner assembly as shown.



8. Remove the complete air cleaner assembly as shown.



9. Remove the air inlet cover, which is secured to the radiator core support by two plastic rivets.



10. Remove the air inlet duct located directly in front of the battery.



11. Raise the vehicle up and support it with jack stands, then, remove the front tire as shown.



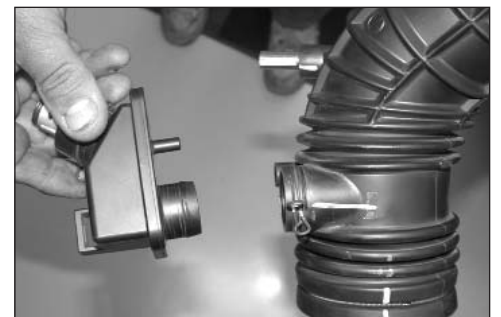
12. Remove the plastic rivets and screws that secure the inner fender valance, then, lower the inner fender valance down as shown.



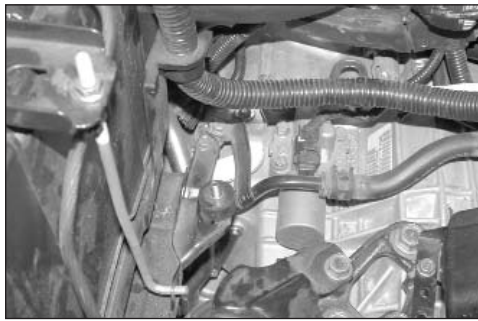
13. Remove the two bolts that secure the resonator to the inner fender, then, remove the resonator as shown.



14. Install the silicone hose and hose clamps onto the throttle body and tighten as shown.



15. Remove the crank case vent chamber from the stock intake tube as shown.



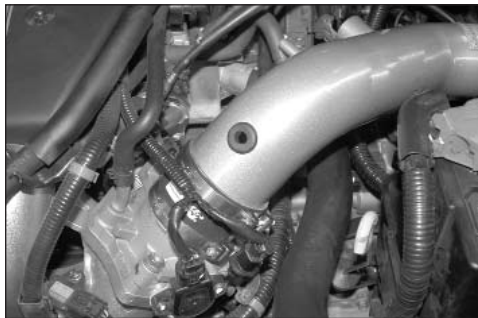
16. Install the rubber mounted stud into the original air cleaner mount as shown.



17. Install the "Z" bracket onto the K&N Typhoon short ram tube using the provided hardware as shown.



18. Install the provided grommet into the hole on the K&N short ram tube as shown.



19. Slide the K&N short ram intake tube into the silicone hose as shown.



20. Line up the bracket with the rubber mounted stud and secure with the provided hardware but do not tighten at this time.



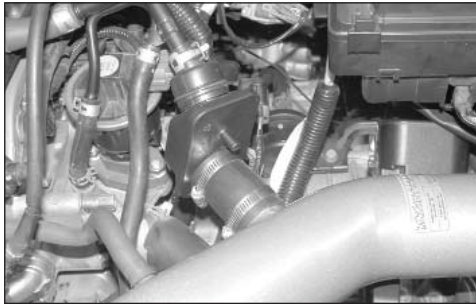
21. Install the air temperature sensor into the grommet as shown.



22. Reconnect the vent hose to the vent on the K&N short ram tube as shown.



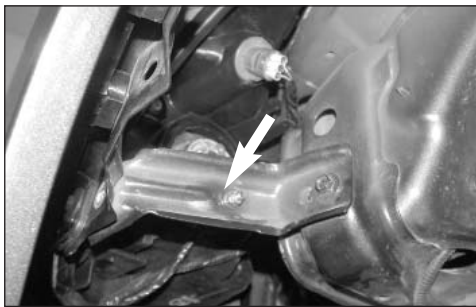
23. Install the provided hose and hose clamps onto the stock crank case vent chamber as shown.



24. Install the crank case vent chamber onto the vent on the K&N short ram tube, then, connect the other end to the crank case vent hard line as shown.



25. Install the silicone hump hose and hose clamps onto the K&N Typhoon short ram tube as shown.



26. Install the provided rubber mounted stud onto the front of the fender brace and secure with the provided hardware as shown.



27. Install the K&N cold air tube from underneath the vehicle as shown.



28. Slide the K&N cold air tube through the hole in the inner fender and slide the tube into the silicone hump hose as shown. But do not tighten at this time.



29. Line up the tube bracket with the rubber mounted stud and secure with the provided hardware as shown.



30. Install the K&N Drycharger onto the K&N Filtercharger as shown. **NOTE: The Drycharger's water repellent properties will last up to two years. See the parts list to re-order Drycharger if necessary.**



31. Install the Air Filter from underneath the vehicle and secure it with the provided hose clamp as shown. Tighten hose clamp from step 28.

32. Reverse the removal process and reinstall the inner fender valance.

33. Remount the tire and torque to factory specs.



34. This K&N Typhoon intake kit is designed for use in two different configurations. In the case of inclement weather, the cold air tube can be removed and the filter can be clamped onto the intake tube located in the engine compartment to avoid the possibility of ingesting water into the engine. **NOTE: If you have any concerns, return the vehicle to stock using the factory equipment.**

35. Re-connect the negative battery cable and double check that everything is tightened and properly positioned before starting the vehicle.

36. The C.A.R.B. exemption sticker (attached), must be visible under the hood, so that an emissions inspector can see it when the vehicle is required to be tested for emissions. California requires testing every two years, other states may vary.

37. It will be necessary for all Typhoons to be checked periodically for realignment, clearance and tightening of all connections. Failure to follow the above instructions or proper maintenance may void warranty.

#### ROAD TESTING:

1. Start the engine with the transmission in neutral or park, and the parking brake engaged. Listen for air leaks or odd noises. For air leaks secure hoses and connections. For odd noises, find cause and repair before proceeding. This kit will function identically to the factory system except for being louder and much more responsive.

2. Test drive the vehicle. Listen for odd noises or rattles and fix as necessary.

3. If road test is fine, you can now enjoy the added power and performance from your kit.

4. K&N suggests checking the Air Filter element periodically for excessive dirt build-up. When the element becomes covered in dirt (or once a year), service it according to the instructions on the Recharger service kit, part number 99-5000 or 99-5050.

**\*FREE K&N DECAL To register your warranty, please see us online at [knfilters.com/register](http://knfilters.com/register). FREE K&N DECAL\***