

# GO RHINO!

## PRODUCTS®

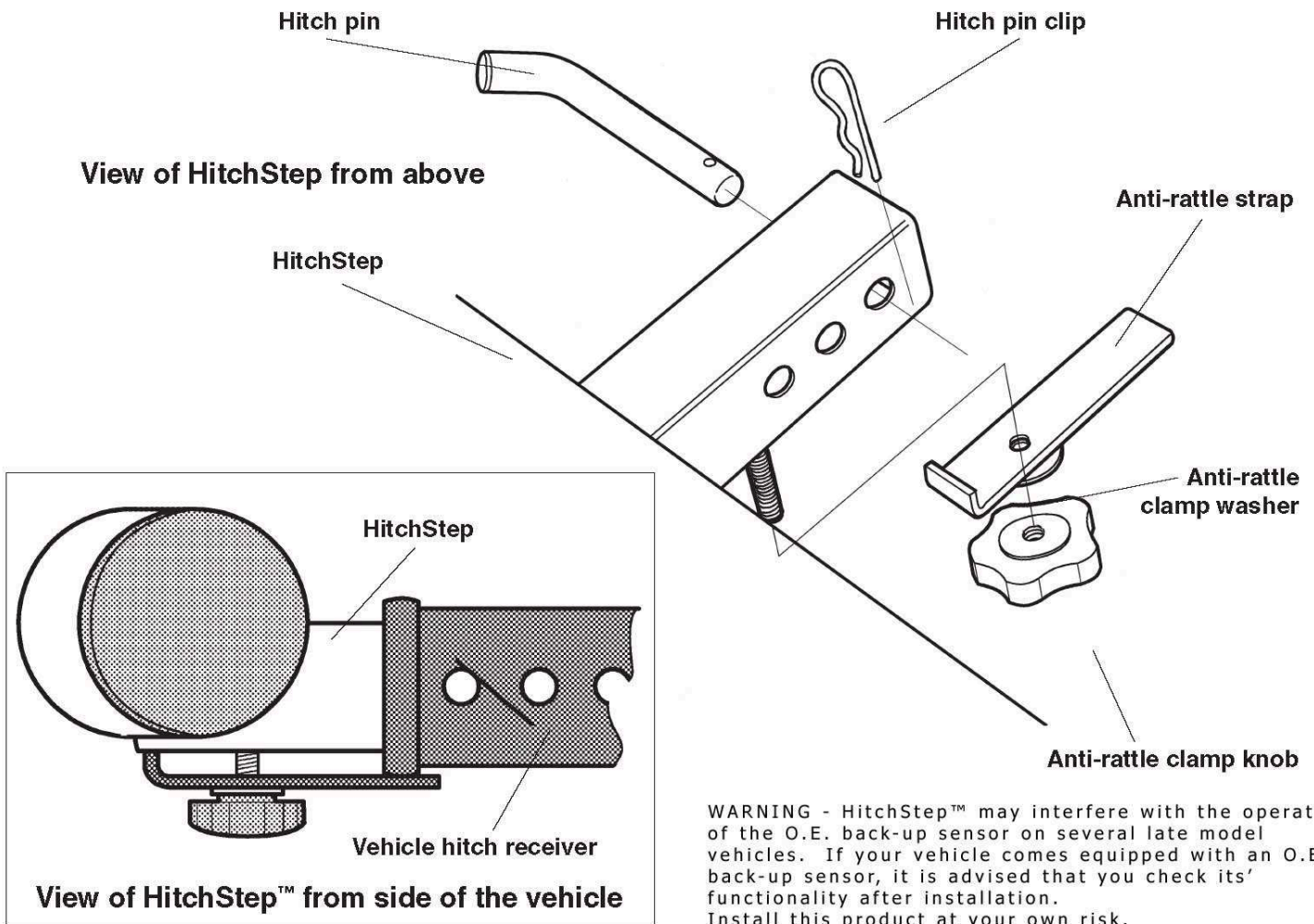
Built to demand respect!

Xtreme  
Racks

Innovative Truck Racks!

QuickRack™

# HitchStep™ Installation Instructions



## The Go Rhino! HitchStep™ is quick and easy to install requiring no special tools.

Insert the HitchStep post into the vehicle's hitch receiver. The HitchStep has 3 holes for alignment. Position the HitchStep to your liking and align up the nearest hole with the hole in the receiver. Push hitch pin through the holes and secure with the hitch pin clip provided. Note: You may prefer to use a locking hitch pin, any popular make will work with the HitchStep.

If you need to use the receiver for towing, remove the HitchStep and replace with your tow hitch. When the

HitchStep is not in use, it can be stored in the storage bag provided. This will keep the inside of your vehicle clean. The HitchStep should be cleaned and cared for in the same manner that you clean and care for your vehicle. Do not use abrasive cleaners on the finish. In extreme weather conditions, you may wish to lubricate the anti-rattle clamp knob thread with WD40 or grease. Thank you for choosing Go Rhino! Products. Check out our other products on our website.

© 2005 Go Rhino! Products

**GO RHINO! Products XtremeRacks QuickRacks**

**591 W. Apollo St. Brea, CA 92821**

**(714)255-0420**

**(888)427-4466**

**FAX(714)529-5252**