



Mon - Thurs 7:30am - 5:00pm | Friday 7:30am - 4:00pm CST

1-800-779-2102

WWW.DEEZEE.COM

**PLEASE INSPECT YOUR PRODUCT FOR DAMAGE
BEFORE PROCEEDING TO INSTALLATION.**

INSTRUCTIONS FOR RETURNS:

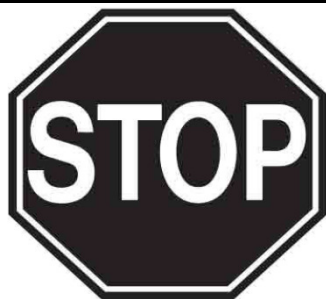
ALL PRODUCTS NEED RETURNED TO POINT OF PURCHASE
FOR WARRANTY DEFECTS, DAMAGES, OR RETURNS.

FOR MISSING PARTS PLEASE CONTACT DEE ZEE INC.
1-800-779-2102

REGISTER YOUR PRODUCT ONLINE: **www.deezee.com/registration**

VIEW INSTRUCTIONS ONLINE: **www.deezee.com/instructions**

FOR INSTALLATION ON DRIVER'S SIDE ONLY



Before returning this product to the store of purchase

Contact Dee Zee if you experience the following problems:

- Missing Parts
- Installation Problems/Questions
- Warranty Questions

1.800.779.2102

Hours of operation: 8am - 5pm CST, Mon-Friday

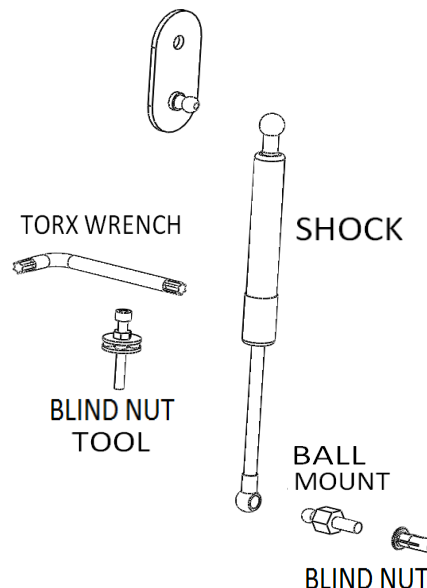
Review complete warranty policy and register your product at:

www.deezee.com

DZ 43203
TAILGATE ASSIST
FORD F-150 1997-2003
SUPERDUTY 1999-CURRENT



BALL MOUNT PLATE



PARTS LIST:

ITEM	QTY
THREAD LOCK TUBE	1
SHOCK	1
BALL MOUNT PLATE	1
BLIND NUT TOOL	1
BALL MOUNT	1
BLIND NUT/NUTSERT	1
TORX WRENCH	1
MYLAR	1

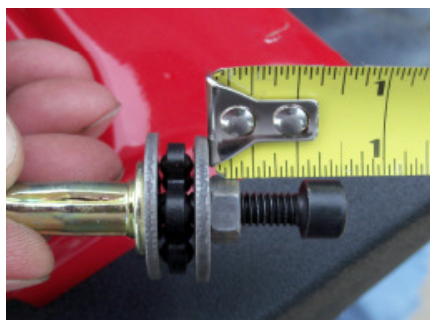
TOOLS REQUIRED:

T-50 TORX
M6 ALLEN WRENCH
16MM WRENCH
13MM WRENCH
TAPE MEASURE
16MM DEEPWELL SOCKET
SUPERDUTY ONLY
8MM WRENCH
11MM WRENCH

NOTE: THIS PRODUCT CAN ONLY BE INSTALLED ON THE DRIVER'S SIDE.

STEP 1)

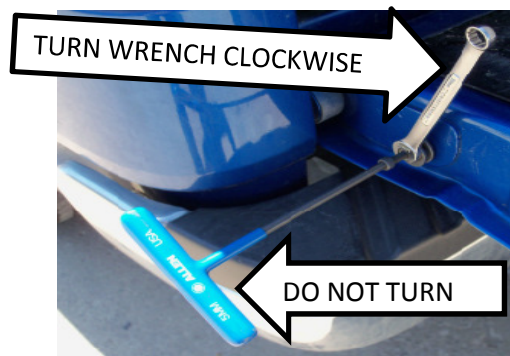
Adjust the nutsert tool so there is 3/4" from the washer to the head of the bolt.



STEP 2)

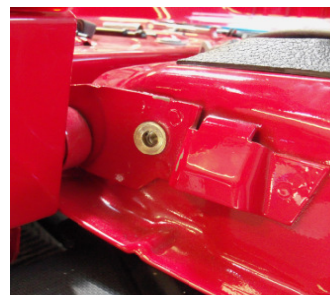
Using a M6 Allen wrench and a 13mm wrench, install the blind nut in the opening by the tailgate pivot point. The nutsert should be tightened at least nine 360 degree turns. Mark one side of the nut and count the number of revolutions to insure the correct number of turns. After the nine turns, if the blind nut can still be moved or rotates, continue tightening an additional 1 - 2 turns. Re-check blind nut, repeat as needed.

Remove the nutsert tool when installation is complete.



WARNING:

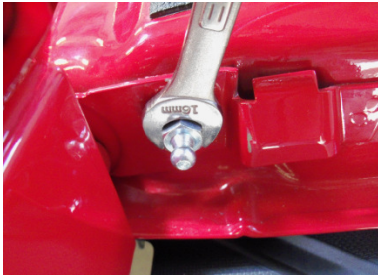
Overtightening the nutsert can strip the threads and cause the nutsert to be unusable.



FOR INSTALLATION ON DRIVER'S SIDE ONLY

STEP 3)

Apply thread lock to the threads of the ball mount. Install the ball mount into the nutsert using a 16mm wrench/socket. Torque to 12 ft-lbs with 16mm deepwell socket.



Using a torque wrench to install the ball mount will also insure that the blind nut has been completely installed.

STEP 4)

Remove the tailgate cable from the bolt.



Use a T50 torx socket or the wrench provided to remove the cable bolt.



Install the bolt back through the hole in the ball mount into the vehicle.

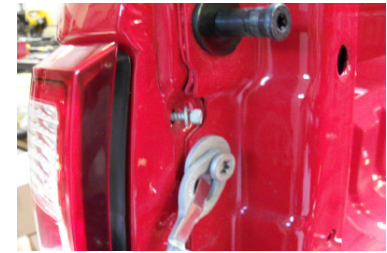


Tighten the bolt with the T50.

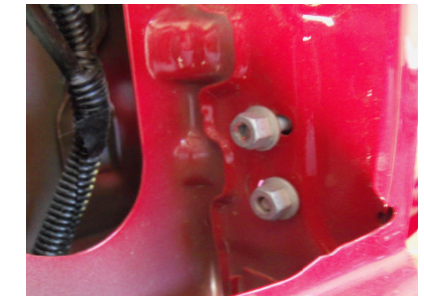
STEP 5)

Using a 8mm wrench/socket, remove the 2 bolts holding the taillight in place.

There will still be 2 clips holding the tail light in place. pull the tail light towards the rear of the vehicle to remove it.

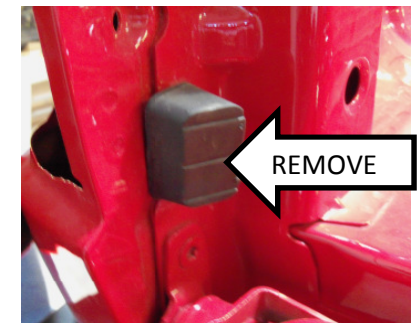


Inside the taillight opening , use an 11mm socket to remove the 2 nuts holding the rubber block in place.



After removing the rubber block reinstall the taillight.

WARNING:
If the rubber block is not removed, it will interfere with the shock.

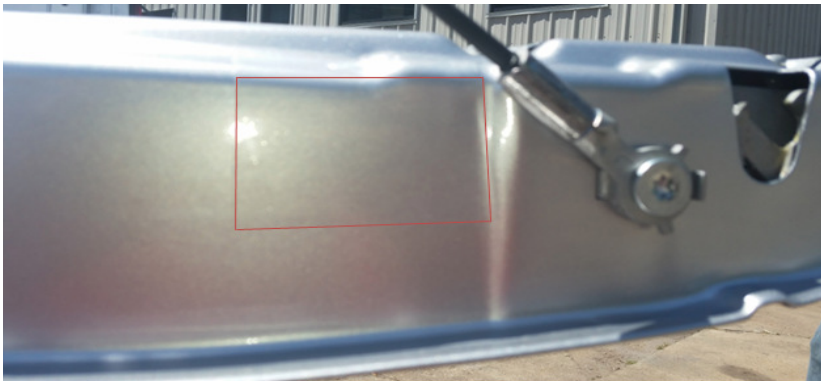


FOR INSTALLATION ON DRIVER'S SIDE ONLY

STEP 6)

A Mylar sheet has been provided to help prevent components from rubbing against the truck bed and tailgate in the event that any part becomes loose. Using scissors, cut the mylar to the size needed. Apply the mylar to the truck bed and tailgate where tailgate assist components will be in close proximity during opening/closing. The red lines show the area where the mylar has been installed.

The vehicle shown is an example of how the mylar can be installed. Your vehicle may differ from the vehicle shown.



STEP 7)

Install the cable back onto the cable bolt, and the larger part of the shock on the ball mount plate.



Install the narrow end of the shock on the ball mount .



Periodically check the upper and lower mounting locations to insure that parts have not loosened through repeated use. If either mounting location is found to be loose, re-tighten the hardware as needed.

FOR INSTALLATION ON DRIVER'S SIDE ONLY

FAQ's

How does a nutsert/blind nut work?

The nutsert (blind nut) is the hardware that will be installed into the tailgate. As you turn the nut on the install tool, the nutsert begins to mushroom and spread out.

As the fingers expand, the threads are moving closer to the edge of the tailgate to attach the mounting point for the Tailgate Assist.

What if nutsert continues to spin without expanding?

There are two different options to get the nutsert to start the expansion process:

- 1) Place a small amount of the blue thread lock that comes with the kit to the end of the screw. Allow the adhesive to dry. This step will keep the nutsert from spinning and allow the nutsert to expand.

OR

- 2) Place masking tape around the hole on the tailgate. This will create a rough surface for the nutsert to rest against to initiate the process by separating the two smooth surfaces of the painted truck body and flange of the nutsert.

Can the Tailgate Assist be installed on the passenger's side?

No. The unit will not work on the passenger side of the truck bed. The passenger side of the vehicle that has the slot that allows the tailgate to be removed.

Do you have installation videos?

Yes. All installation videos can be viewed at:

WWW.DEEZEE.COM/TAILGATEASSIST